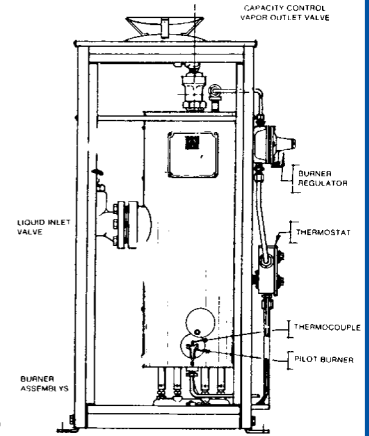


ALGAS DIRECT FIRED VAPORIZERS RECOMMENDED SPARE PARTS



All units equipped with 9V Pilot Relighter

ALGAS REPAIR PARTS

Description	RMI Part No.		
	40/40H	80/40H	120/60H
Master Spare Parts Kit (includes * kits below)	Pre 10/02 451-504-01	Pre 10/02 452-504-01	Pre 10/02 ??????
	Post 10/02 81111	Post 10/02 81112	Post 10/02 ????
*Thermocouple & Pilot Kit	3-0014	3-0013	41041
*Liquid Inlet Valve Kit	3-0016	3-0016	3-0016
*Capacity Control Valve Kit	3-0017	3-0017	3-0017
*Thermostat	41073	41073	41073
Pilot Assembly Pre '02		3-0644	
Pilot Assembly Post '02		41021	41021
Burner Tips Pre '02	40C14-6	40C14-6	
Burner Tips Post '02	33581-10	33581-10	33581-10
Burner Regulators	34800	34800	34800

40/40H & 80/40H DIRECT FIRED VAPORIZERS

RMI Part No.	Capacity GPH	Capacity MM BTU/HR	Dimensions			Liquid Inlet	Vapor Outlet	Weight (Lbs.)
			Depth	Width	Height			
40/40H	40	3.64	22	21	41	3/4"	1"	155
80/40H	80	7.28	35	21	41	3/4"	1"	220
120/60H	120	10.92	35	21	50	3/4"	1"	275
160H	160	14.5	20	30	70	3/4"	1"	450
320H	320	29.1	34	30	74	2"	2"	900
480H	480	43.6	49	30	74	2"	2"	1350
640H	640	58.2	63	30	74	2"	2"	1800
800H	800	72.8	78	30	74	2"	2"	2250

RANSOME DIRECT FIRED VAPORIZERS

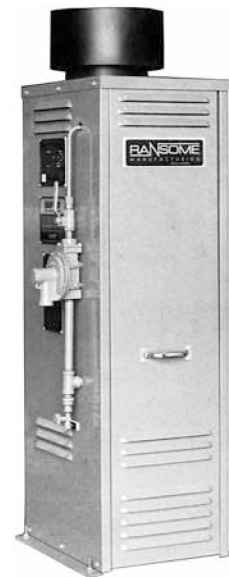
RANSOME DIRECT FIRED VAPORIZERS

RMI Part No.	w/ Electric Relight	Capacity GPH @ 0°F.	Capacity BTU/HR	Dimensions			Liquid Inlet	Vapor Outlet	Weight (Lbs.)
				Depth	Width	Height			
RH50	RH50-E	50	4,580,000	20.5"	16.6"	31"	3/4"	1"	205 lbs.
RH80	RH80-E	80	7,340,000	20.5"	16.6"	41"	3/4"	1"	245 lbs.
RH120	RH120-E	120	11,000,000	20.5"	16.6"	48.5"	3/4"	1"	285 lbs.
RH200	RH200-E	200	18,340,000	20.5"	16.6"	67.5"	1"	1"	380 lbs.
RH400	RH400-E	400	36,680,000	26.3"	34"	64"	1"	2"	920 lbs.
	RH600-E	600	54.9	26.5"	42"	69.5"	1"	2"	1300 lbs.
	RH800-E	800	73.2	26.5"	56"	69.5"	1"	2"	2050 lbs.
	RH100-E	1000	91.5	26.5"	70"	69.5"	1"	2"	2500 lbs.

Units available to accept 3/4" or 1" ESV. add "-ESV" to part number. Ex.: RH80-ESV

RANSOME REPAIR PARTS

RMI Part No.	Description
KF-120F	Replacement Temperature Switch
R632-HCF	Replacement Regulator RH50-R200
R632-JFF	Replacement Regulator RH400
JC-KIT	Pilot Assembly
HW-Q313A	Thermal Generator
HW-VS820A	Gas Valve
H185-250	Relief Valve



SECOND SUN TANK HEATER

- Adds 2mm BTUH to tank capacity
- Requires no electricity to operate
- Fits 41" - 84" Tanks (1,000 gallons - 12,000 Gallons)
- Uses flameless catalytic heater to impart heat
- Integrated over pressure and over temperature safeties



RMI Part No.	Description
11199	2mm BTUH Tank Heater

TOREXX VERTICAL EXPLOSION PROOF ELECTRIC VAPORIZER



- Proprietary Liqui-Safe valve positively prevents liquid carry over
- 98% Thermal efficiency
- Hazardous area classification - Class1, Div. 1
- 92% Thermal Efficiency
- Withstands momentary power interruptions without service disruption

RMI Model No.	Vaporization Gallon/Hr.	Capacity BTU/Hr.	Liquid Inlet	Vapor Outlet	Dimensions			Weight (lbs.)
					D	W	H	
TX25	12.5	1.14 MM	3/4" FNPT	1" FNPT	11 1/4"	9 1/8"	41"	50
TX50	25	2.28 MM	3/4" FNPT	1" FNPT	11 1/4"	9 1/8"	41"	65
TX100	50	4.55 MM	3/4" FNPT	1" FNPT	11 1/4"	9 1/8"	41"	70
TX160	80	7.28 MM	3/4" FNPT	1" FNPT	11 1/4"	9 1/8"	41"	110
TX240	120	10.93 MM	3/4" FNPT	1" FNPT	11 1/4"	9 1/8"	41"	140
TX320	160	14.57 MM	3/4" FNPT	1" FNPT	11 1/4"	9 1/8"	41"	160

TOREXX INSTALLATION ACCESSORIES

RMI Part No.	Description
41051	Economy Operation Valve (up to 160 GPH)
36923	Valve & Strainer Package
20437	Stand to Raise Unit 12'
5010-3003	Drain Valve Kit
64004	Balancing Orifice

ZIMMER ELECTRIC VAPORIZER

- 20 Gallons per hour capacity
- 1.82 MM BTUH
- Operates on 100-240 volts AC or DC
- Can utilize 100# and 420# cylinders with liquid withdrawal valves

ZIMMER VAPORIZER & ACCESSORIES

RMI Part No.	Description
Z40P	20 GPH Electric Vaporizer Accessories
X1584MN	High Temperature 1/2" Regulator
80887	Tank counting Kit
80888	Tank Mounting Valve & Regulator Kit
80885	Wall Mount Kit
80892	Strainer & Piping Kit for Wall Mount



AQUAVAIRE VERTICAL WATERBATH VAPORIZERS

The AQUAVAIRE waterbath vaporizer safely and efficiently vaporizes LPG for commercial, industrial and utility gas consumption applications.

- Factory Mutual System APPROVED
- Two electrically operated fuel shut-off valves
- Water circulation pump increases heat transfer

Note: Larger units are available.

RMI Part No.	Vaporization Gallon/Hr.	Capacity BTU/Hr.	Liquid Inlet	Vapor Outlet	Electrical Data			Dimensions			Weight (lbs.)
					Phase	Voltage	Amps	D	W	H	
Q320V	320	29,120,000	3/4" NPT	2" NPT	1	120	8.9	69"	27"	70"	1,150
Q480V	480	43,680,000	3/4" NPT	2" NPT	1	120	8.9	72"	27"	79"	1,350
Q640V	640	58,240,000	3/4" NPT	2" NPT	1	120	10.4	74"	39"	75"	2,100
Q800V	800	72,800,000	1" NPT	2" NPT	1/3	120/240	9.1/4.8	74"	39"	88"	2,300
Q960V	960	87,360,000	1" NPT	2" NPT	1/3	120/240	11.5/6.2	74"	39"	88"	2,400
Q1120V	1,120	101,580,000	1" NPT	2" NPT	1/3	120/240	14.5/8.3	92"	55"	83"	7,100
Q1375V	1,375	125,520,000	1" NPT	2" NPT	1/3	120/240	15.0/8.5	92"	55"	83"	7,200



Q320V

INDIRECT VAPORIZER/HYDRONIC BOILER PACKAGE

RMI PART NO.	GPH	Capacity
HXB320	160	14.5 MM BTUH
HXB500	250	22.9 MM BTUH
HXB640	320	28.8 MM BTUH
HXB1000	500	45.2 MM BTUH

Packaged hot water vaporizer with a prepiped hydronic boiler. The hydrex is prepiped, pre-wired, and ready for installation.



RANSOME WATERBATH VAPORIZERS

RMI Part No.	w/ Electric Relight	Capacity GPH @ 0°F.	Capacity BTU/Hr	Depth	Width	Height	Liquid Inlet	Vapor Outlet	Weight (Lbs.)
RW100	RW100-E	100	9,170,000	20.5"	14"	48.5"	3/4"	1"	450
RW180	RW180-E	180	16,500,000	20.5"	14"	67.5"	3/4"	1"	750
RW360	RW360-E	360	33,010,000	21.5"	28"	69"	1"	2"	1390
RW540	RW540-E	540	49,510,000	21.5"	42"	69"	1"	2"	1950
RW720	RW720-E	720	66,020,000	21.5"	56"	69"	1"	2"	2510

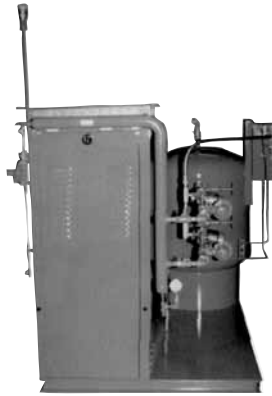
Note: Larger units and IRI controls available.



RW100

PACKAGED VAPORIZING/MIXING SYSTEMS

- Direct fired or electric vaporizer
- Venturi type mixer
- All controls pre-wired
- Surge/accumulator tank included
- Skid mounted for ease of installation
- FM approved



ENERGY SYSTEMS

- Direct fired vaporizer
- 5-10 PSIG delivery pressures (*see note)
- 2.5 - 42MM BTU Capacity



SAM DICK INDUSTRIES

- Electric vaporizer
- 4-12 PSIG delivery pressures (*see note)
- 2.5MM-28MM BTUH capacity

MODULE TYPE VAPORIZING/MIXING SYSTEMS

- Direct fired or water bath vaporizer
- Venturi type mixer
- All controls pre-wired
- FM approved



RANSOME PAM SERIES

- Direct fired vaporizer
- 5-9 PSIG delivery pressure (*see note)
- 14.75MM-73-75MM BTUH Capacity
- Infinite turndown ratio



SAM DICK QM SERIES

- Water bath vaporizer
- 5-15 PSIG delivery pressures (*see note)
- 28MM-125MM BTUH capacity
- Self diagnostic system

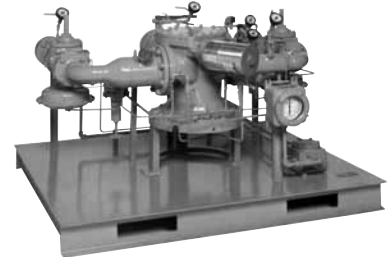
VENTURI PROPANE/AIR MIXER

- For component type systems
- Need to supply correctly sized vaporizer
- 7MM-250MM BTUH capacity
- 4-15 PSIG delivery pressure (*see note)
- All controls pre-wired



PROPORTIONING PROPANE/AIR MIXER

- 16MM-870MM BTUH
- 10-150 PSIG
- Extremely accurate
- Local or remote mounted controller



TYPICAL SURGE/ACCUMULATOR VESSEL

- ASME code vessel
- Sized to load/capacity
- Valving packages available



NOTE:
* HIGHER PRESSURES AVAILABLE WITH THE ADDITION OF HIGH PRESSURE AIR.

OUTLET



INLET

CHEM A-2

For use with vaporizers—single stage design. Helps remove heavy end particles and solid material by centrifugal action in the chamber.

- All welded construction
- Openings for drain valve & relief valve
- Also available in two stage design with filter
- 100 psi working pressure.

CHEM GAS SEPARATOR

RMI Part No.	Capacity @ 10 PSIG	Inlet	Outlet	Drain Opening	Diameter	Height	Weight (Lbs.)
CHEM A-1	4,528,800 BTU/hr	1" FNPT	1" FNPT	1/2"	5"	13"	33#
CHEM A-2	15,096,000 BTU/hr	2" FNPT	2" FNPT	1/2"	8"	25 1/2"	64#
CHEM A-3	135,864,000 BTU/hr	3" FNPT	3" FNPT	1/2"	12"	40"	120#

ALGAS FILTAIRE

Filtering device to trap heavy end 5 commonly present in vaporized LP gas. Includes pressure gauges to monitor efficiency of filtraire.

RMI Part No.	Capacity @ 20 PSIG	Size
F0.5	20 GPH	
F4	102 GPH	1 1/2"
F6	230 GPH	2"
F8	405 GPH	3" 300# FLANGE
F12	920 GPH	6" 300# FLANGE



BLUE MOON FILTERS

A multi stage filter system that can extract 90-97% of impurities from the liquid phase of propane – before it gets into vaporizers, regulators and engine systems

RMI Part No.	Size	Description	Filter Life	Replacement Element
BMF-FST26	3/8"	15GPM Disposable Filter	100,000	X
BMF-FST42	3/8"	15GPM Filter Assembly	100,000	BMF-RF2
BMF-FST63	1"	50GPM Disposable Filter	150,000	X
BMF-FST634	1"	50GPM Filter Assembly	250,000	BMF-RF6
BMF-FST124	2"	65-85GPM Filter Assembly	500,000	BMF-RF4
BMF-FST418	3" Flange	170GPM Filter Assembly	500,000	BMF-RF8



PRO2000-V

PROPANE VAPORIZER FUEL TREATMENT

PRO2000-V is a highly effective liquid additive to help eliminate heavy ends in liquid propane. The solvents in Pro2000-V allow the heavy ends to be carried into the combustion chamber without creating deposits in control valves and regulators.

RMI Part No.	Description
208L-5	5 Gallon Container PRO2000-V
208L-55	55 Gallon Drum PRO2000-V

*Use at recommended dosage of 1 gallon per 2000 gallons of propane.

© Ray Murray Inc. Edition 11