

FLAME ENGINEERING TORCH PAKS

Versatile "Red Dragon" utility torch kits. Torch operates on tank pressure. Kit comes complete with torch, shut-off, 10' hose and POL safety fitting. Excellent for burning, melting, heating, weed burning, and other home and commercial uses.



RMI Kit No.	Torch Only	Capacity BTU/Hr.	Torch Length	Diameter	Operating PSI
VT1-1/2-12C	VT 1-1/2-12	50,000	15"	1 1/2"	5-25#
VT2-1/2-30C	VT 2-1/2-30	200,000	33"	2 1/2"	5-90#
VT3-30C	VT3-30	500,000	33 1/2"	3"	5-90#
HT1-1/2-10C	HT 1-1/2-10	50,000	15"	1 1/2"	5-25#

"RED DRAGON" ROOFING TORCHES

Complete "Red Dragon" kits for all types of roofing. Small torch for flashing and detail work. Long torch for stand-up work. Kit comes complete with torch, 25' of hose and fittings, regulator and spark lighter.



RMI Kit No.	Capacity BTU/Hr.	Torch Length	Diameter	Operating PSI
RT2.5-20C	200,000	29"	2 1/2"	5-50#
V-880P	Squeeze Valve Only, Replacement			

WESTERN ENTERPRISES TORCH KIT

Kit includes:

Torch, 10' Hose, Tank Adaptor, Shut-off Valve, Leak Test Fluid, Spark Lighter



RMI Part No.	BTU Capacity	Torch Length	Diameter	Operating Pressure
WB-101	500,000	31 1/2"	2"	Tank

L.B. WHITE CAST IRON PROPANE TORCHES

FOR HEATING AND BURNING APPLICATIONS



LB-112

RMI Part No.	Description	BTU/Hr.	Operating Pressure	Handle Length	Burner Head
LB-112	Big Bertha Torch & Valve	500,000	25 psig	11"	Cast
LB-162	Torch with Safety Control	400,000	25 psig	11"	Cast

BURNERS INC. TORCH PAKS



Complete Torch Kit—Ready to use 500,000 or 300,000 BTU torches operate on tank pressure. Includes hose, excess flow valve, torch and display pack. Great for ice thawing in drains, snow melting, drying for construction site, and weed burning. FV-10 features non-extinguishable (no snuff-out) remote air

RMI Kit No.	Torch Only	Capacity BTU/Hr.	Torch Length	Diameter	Operating PSI
FV-10TP	FV-10	500,000	42 1/2"	3"	Tank
FV-11TP	FV-11	300,000	30"	2 3/4"	Tank

TS4000T SERIES

Ignitor/Bernz-o-matic's top of the line non-adjustable torch. Ideal for both home & professional use. Trigger on/off button.



TS7000MT SERIES

Ignitor/Bernz-o-matic's "very best" torch features adjustable flame control. Designed for heavy duty professional brazing and soldering.



TS7000MT SERIES

RMI Part No.	Description	BTU/Hr.
TS4000T	Non-adjustable Torch	5,500
TS7000MT	Adjustable Pro Torch	8,650

ACCESSORIES & PARTS

RMI Part No.	Description
BT4756	Propane/MAPP Burn Tube Assembly (TS4000 & TS7000)
QT4757	Pencil Flame Burn Tip & Orifice Kit
QT4758	Swirl Flame Burn Tip & Orifice Kit
QT4759	General Purpose Flame Burn Tip & Orifice Kit

LIQUID BURNERS

FOR TAR KETTLES, COOKING, HEATING, AND SPECIAL APPLICATIONS



Liquid coil straight type for most applications.

RMI Part No.	Description	BTU Rating	Operating Pressure
FL-1	Liquid Propane Burner	500,000	5-30 #
FL-4	Liquid Propane Burner	2,000,000	5-30 #

* Available with optional 100% safety and thermocouple.

* Additional burners available - ask for a BURNERS INC. catalog.

SHRINKFAST MODEL 998

The leading heat tool for both shrink-wrapping and shrink-film processing. When time is of the essence the power of the 998 will get the job done – quickly and efficiently.

- **POWERFUL:** 15% more power than leading competitors. 212,000 BTUs of power shrink wrap a 40" x 48" x 60" pallet in less than 2 minutes.
- **LIGHTWEIGHT:** Sleek design and weighs only 2.2 lbs.
- **SAFE:** Automatically shuts off the flame once the trigger is released. Nozzle remains cool even after extensive use. Regulator has an automatic safety POL that shuts off propane supply if hose gets cut or leaks.
- **DURABLE:** Full 1 year manufacturer's warranty on all parts and labor. Full service repair facility to answer questions and rebuild any heat tool or extension.
- Runs on LP Gas.
- Many applications including pallets, outdoor kitchens & Islands, and marine.

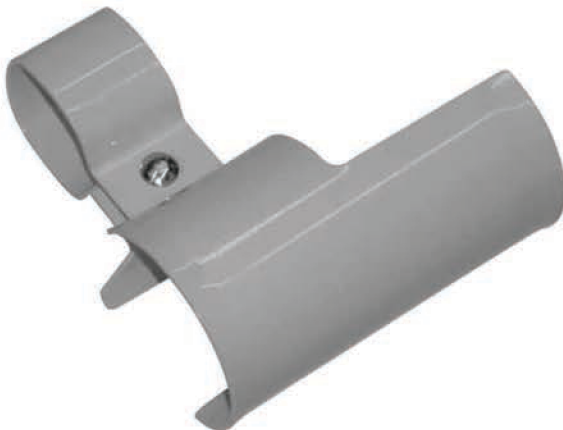


RMI Part No.	Description
998	Complete Kit Including Hose Regulator and Gun

**SHRINK WRAP AVAILABLE IN DIFFERENT SIZES AND THICKNESS.
CALL RMI FOR ASSISTANCE AND ORDERING.**

ARM ASSIST CLIP

- One-handed shrink wrapping
- Reduce stress in your forearm
- Lightweight aluminum design
- Rugged powder coat finish
- Fits any model 998 heat tool
- Works with 4' & 6' extensions

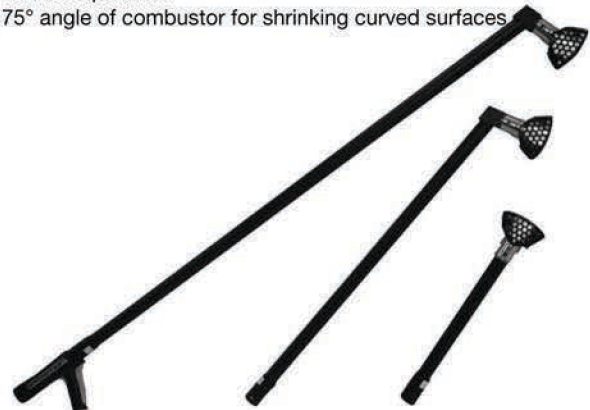


RMI Part No.	Description
998-ARM	Arm Assist Clip

INTEGRATED EXTENSION SYSTEM

Lengths & Weights (weight includes heat tool)

- 2' – 4 lbs.
- 4' – 5 lbs.
- 6' – 6 lbs.
- Quick push button disconnect/connect
- Standard arm assist clip for shrinking large jobs and "one handed operation"
- 75° angle of combustor for shrinking curved surfaces



RMI Part No.	Description
998-2	2' Extension
998-4	4' Extension
999-6	6' Extension