

Dimplex® Spring into action and start the outdoor patio fun early.



DSH



The DSH infrared heater is sleek and fits with both indoor and outdoor designs for environments with low lighting. With a 3 second heat up time, this electric heater is sure to bring comfort quickly and can be either wall, ceiling, or stand mounted - ceiling bracket and mounting stand sold separately.

DIR Series



With Schott Nextrema® ceramic tinted glass, the DIR series infrared heater combines attractive design with premium performance. This wall-mounted electric heater provides maximum warmth in as little as 6 seconds – go from cold to comfortable with the touch of a remote.

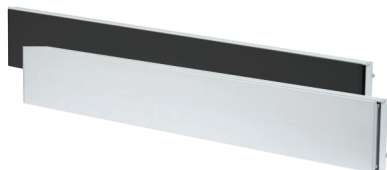
Coming Soon

DIRP



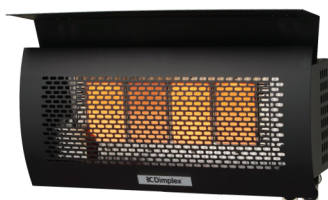
No need for a professional electrician, once mounted, the new plug-in DIR series heaters are safe and easy to use. With the touch of a remote, the Schott Nextrema® ceramic tinted glass heats to maximum warmth within 6 seconds – a premium performance product.

DLW Series



Available in black or white, the DLW series infrared electric heater offers a slim profile and minimalistic style that blends with any décor. This radiant long-wave electric heater emits no visible light making it ideal for low-light environments and can be ceiling or wall mounted.

DGR32WNG



Warm your outdoor oasis without taking up patio space with the DGR wall-mounted natural gas heater. Mount from the ceiling or on the wall, whatever way works best for you. This award-winning design will keep your patio heated all season long.



DGR32PLP

The award-winning design of the DGR portable propane heater will keep you warm wherever you go. Its world-class wind protection rating of 16 km/hr ensures you and your guests feel warm even on the coldest nights.



Prices Reflect July 1st Price Increase

Model No.**Description****List Price****DIR Indoor/Outdoor Infrared Heaters****Features:**

- IP65 Rating for Indoor and Outdoor Applications
- Each Heater Comes with the Element Pre-Installed, Which Eases in Installation and Reduces the Risk of Damaged, Broken or Misplaced Elements Upon Delivery
- Nextrema Schott Glass Ensures Even Heat Distribution and Minimizes Light Emissions
- 3 Heat Settings for Maximum Comfort
- Programmable Timer and Remote Control for Ease of Operation



DIR30A10GR

DIR30A10GR	3000W Infrared Heater, 240V Hard Wired	\$1,266.29
DIR22A10GR	2200W Infrared Heater, 240V Hard Wired	\$618.20
DIR18A10GR	1800W Infrared Heater, 240V Hard Wired	\$569.80
DIR15A10GR	1500W Infrared Heater, 120V and 240V Hard Wired	\$534.60

DSH Indoor/Outdoor Infrared Heaters**Features:**

- IP65 Rating for Indoor and Outdoor Applications
- 1,2 and 3 Hour Delay Time
- 8 Hour Auto Shutoff Safety Mechanism
- 3 Second Maximum Heat Up Time
- 3 Temperature Settings - 1000W (low), 1500W (med), 2000W (high)
- Corrosion Resistant Anodized Aluminum and 304 Stainless Steel Makes This Product Suitable for All Climates
- Multiple Heaters can be Controlled with a Single remote
- Remote Included
- Each Heater Comes with the Element Pre-Installed, Which Eases in Installation and Reduces the Risk of Damaged, Broken or Misplaced Elements Upon Delivery



DSH20W

DSH20W	2000W Infrared Heater	\$552.55
DSHSTAND	DSH Floor Mounted Stand	\$287.78
DSHCMB	DSH Ceiling Mounting Bracket Kit	\$183.04

SOME BRANDS ARE ONLY AVAILABLE IN SELECTED AREAS, SEE PAGE 6 OR CONTACT YOUR REGIONAL SALES MANAGER FOR MORE INFO.

Pricing, model numbers and availability are subject to change without notice.