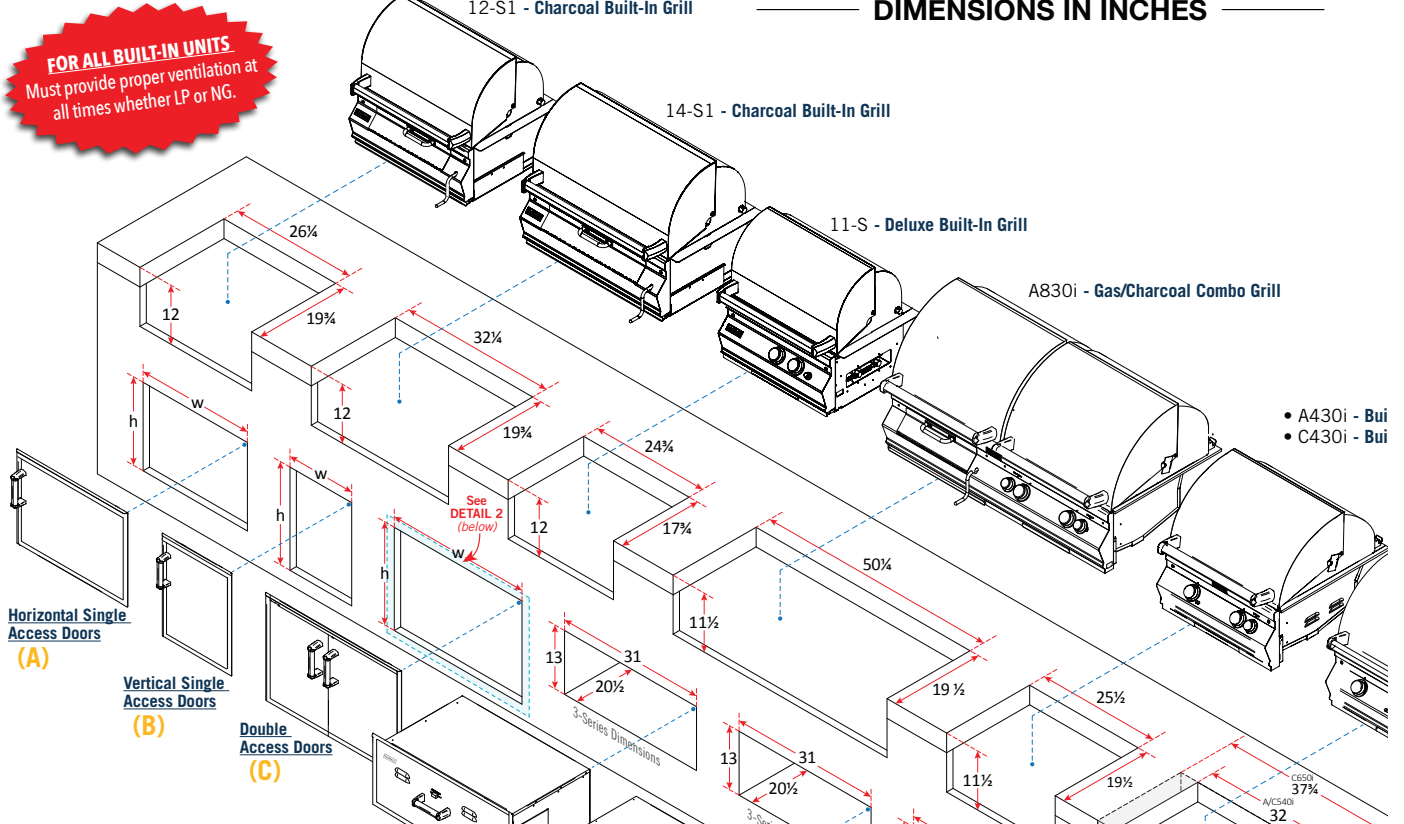


DIMENSIONS IN INCHES



Horizontal Single Access Doors (A)

Vertical Single Access Doors (B)

Double Access Doors (C)

Large Utility Drawer
 • 33830-SW
 • 53830-SW† (shown)
 †5-Series: 14½" h x 32¼" w x 22 d

Masonry Drawer
 • 33830-S
 • 53830SC† (shown)
 †5-Series: 14½" h x 32¼" w x 22 d

Single Access Door w/Tank Tray & Louvers
 • 33820-TSL (TSR)
 • 53820SC-TL (TR) (shown)
 • 53820HSC-TL (TR)

Single Access Door with Dual Drawers
 • 33820-SL (SR)
 • 53820SC-L (R) (shown)

Double Doors w/Dual Drawers & Tank Tray
 • 33930S-12 (-12T)
 • 53930SC-12 (-12T) (shown)
 (-12T) models include louvers

Single Drawer
 • 33801
 • 53801SC (shown)

Double Drawer
 • 33802
 • 53802SC (shown)
 • 53802HSC

Triple Drawer
 • 33803
 • 53803SC (shown)

Access Doors

(A) Horizontal Single Access Doors*

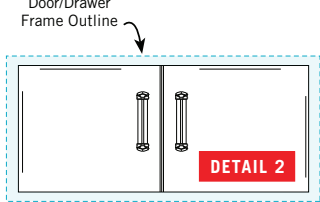
Model #	Series	Cutout (h x w)
33914-SR (SL)	Select	15" x 20½"
53914SC-R (L)	Premium Flush	15" x 20½"
33917-SR (SL)	Select	18" x 24½"
53917SC-R (L)	Premium Flush	18" x 24½"

(B) Vertical Single Access Doors*

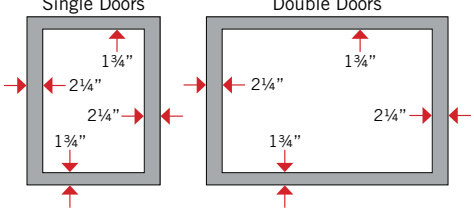
Model #	Series	Cutout (h x w)
33920-SR (SL)	Select	21" x 14½"
33920-1-SR (SL)†	Select	21" x 14½"
53920SC-R (L)	Premium Flush	21" x 14½"
53920HSC-R (L)	Black Diamond	21" x 14½"
33924-SR (SL)	Select	25" x 17½"
53924SC-R (L)	Premium Flush	25" x 17½"

(C) Double Access Doors

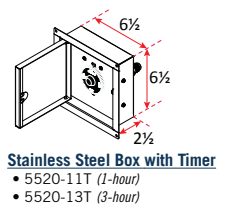
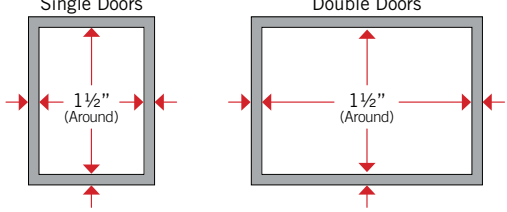
Model #	Series	Cutout (h x w)
53934SC	Premium Flush	15" x 30"
33930S	Select	21" x 30"
53930SC	Premium Flush	21" x 30"
33938S	Select	16" x 39"
53938SC	Premium Flush	16" x 39"
53938HSC	Black Diamond	16" x 39"



Flange Overlap Dimensions / Select Doors

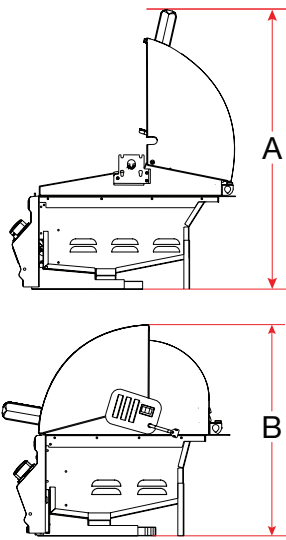


Flange Overlap Dimensions / Premium Flush Doors



Stainless Steel Box with Timer
 • 5520-11T (1-hour)
 • 5520-13T (3-hour)

The information provided is for reference purposes only. Detailed instructions and specifications unique to the product purchased can be found in the Manufacturer's Owner's Manual.



Description	Hood Open	Hood Closed
	(A)	(B)
Echelon E1060i	36"	27"
Echelon E790i	36"	27"
Echelon Black Diamond H790i	36¼"	27¼"
Echelon E660i	36"	27"
Aurora A830i	32¼"	25½"
Aurora 790i	36"	27"
Aurora A660i	36"	27"
Aurora A540i/Choice C540i	32¼"	25½"
Aurora A430i/Choice C430i	32¼"	25½"
Choice C650i	32¼"	25½"
Deluxe 11-S	29¾"	25½"
32" Gourmet Charcoal 14-S1	31¾"	26½"
26" Gourmet Charcoal 12-S1	31¾"	26½"

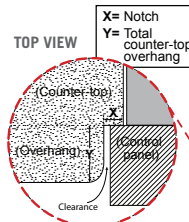
It-In Grill
It-In Grill

- A540i - Built-In Grill (shown)
- C540i - Built-In Grill
- C650i - Built-In Grill

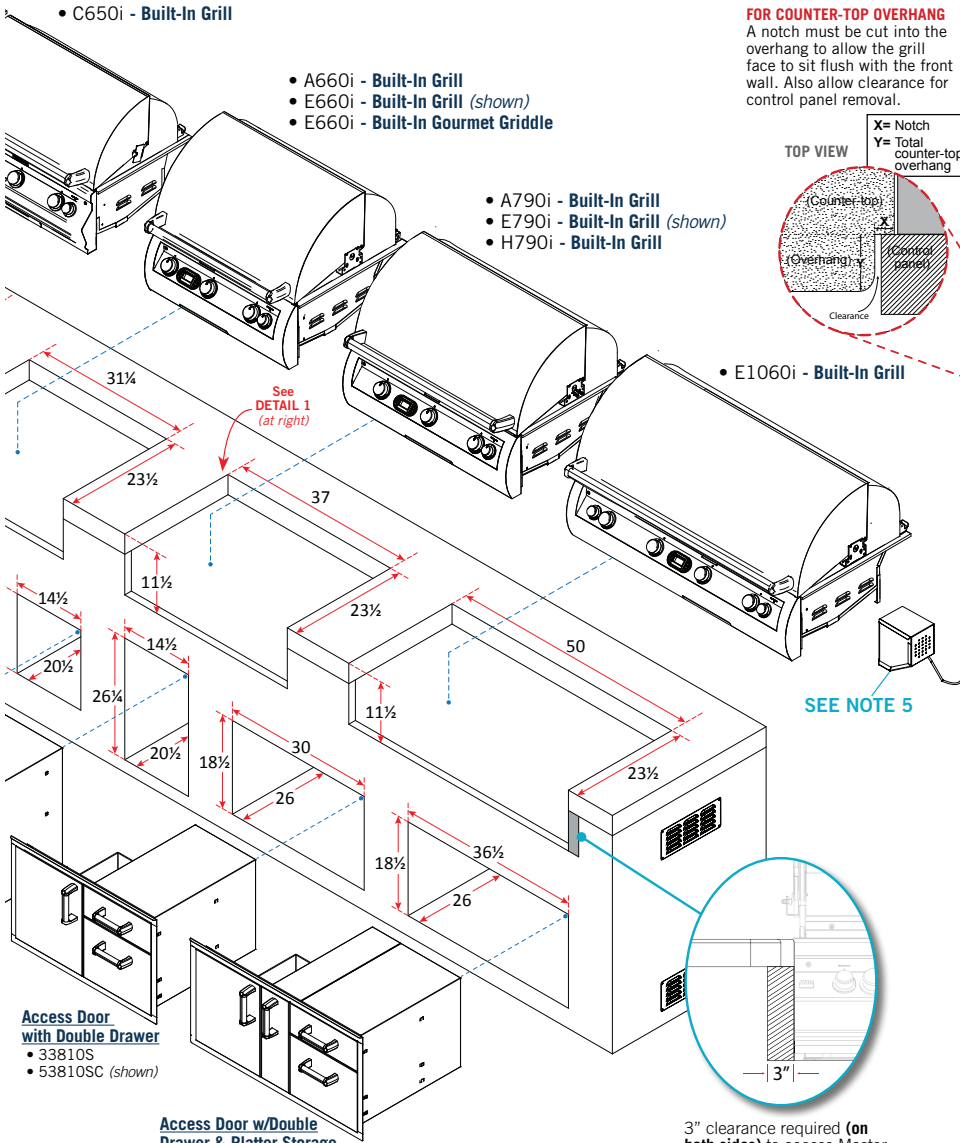
- A660i - Built-In Grill
- E660i - Built-In Grill (shown)
- E660i - Built-In Gourmet Griddle

- A790i - Built-In Grill
- E790i - Built-In Grill (shown)
- H790i - Built-In Grill

FOR COUNTER-TOP OVERHANG
A notch must be cut into the overhang to allow the grill face to sit flush with the front wall. Also allow clearance for control panel removal.



- E1060i - Built-In Grill



- Access Door with Double Drawer**
- 33810S
 - 53810SC (shown)

- Access Door w/Double Drawer & Platter Storage**
- 33816S
 - 53816SC (shown)

3" clearance required (on both sides) to access Master Switch & Meat Probe when using material that extends out from island surface.

OUTDOOR KITCHEN CONSIDERATIONS

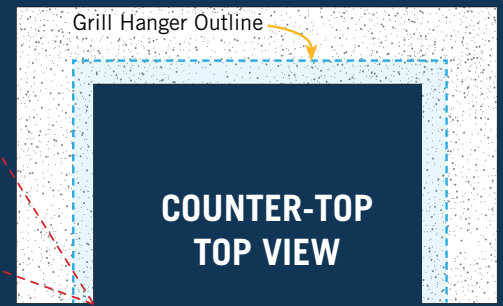
- Provide ventilation in island for gas vapors to escape. Allow at least four ventilation openings (two at floor level and two 16" above floor 10 in² each) at opposing ends/sides
- Carefully consider grill size & accessories needed
- Combustible construction requires insulating liner
- Select Natural or Propane (LP gas)
- Determine total gas consumption for supply line size
- Access is required to gas connections and shut off valve
- Plan location of propane tank away from grill and appliances
- Always refer to the installation and operating instructions of your Fire Magic® grill and/or accessories for installation guidelines & safety warnings, before starting your project
- Always check all gas connections for leaks

LOCATION

- Identify outdoor area where grill will be installed
- Determine the utilities needed (gas, water, electricity, drainage, etc.)
- Consider element exposure (sun, wind direction, weather, etc.)
* Wind blowing into or across the rear oven lid vent can cause poor performance and/or dangerous overheating. Orient the grill so that the prevailing wind blows toward the front of the grill.

MATERIALS

- Foundation - concrete
- Base - brick, stone, stucco, concrete
- Counter-top - tile, granite, marble, concrete



DETAIL 1

Grill hanger measures 1½" all around.

Notes

1. There is a hanger on three sides of each grill. You must allow clearance for the hanger (SEE DETAIL 1).
2. The control panel (face) of the grills is wider than the cutout width. This conceals the cutout space on the left & right hand sides.
3. Clearance of 10" on each side of the oven is recommended for unrestricted operation of lid and rotisserie and at least 3" at the rear flange for ease of maintenance and proper operation. (18" from combustible surroundings on each side and rear is required)
4. Insulating liners must be used & are available for combustible surrounds (See page 6).
5. The rotisserie motor on all models is located on the right side of the grill. Optional Reverse Brackets are available to mount rotisserie motor on opposite side. ONLY units ordered with back burner option come with rotisserie kit and brackets.

The information provided is for reference purposes only. Detailed instructions and specifications unique to the product purchased can be found in the Manufacturer's Owner's Manual.