

Prices Reflect 4/1/22 Pricing

## G19A Series - Vent Free Burner Systems

Certified vent free burner with pre-assembled Remote Control Valve and ODS Safety System. Glowing Embers and Lava Granules are included.

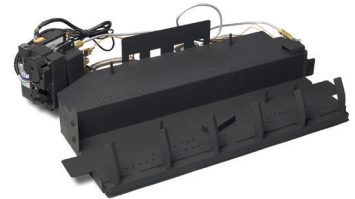
MODEL NUMBER	DESCRIPTION	LIST PRICE
<b>Variable Remote Burners (-15)</b>		
G19A-18/20-15N	18/20" Vent Free Variable Remote Burner, 31,000 btu - NG	\$1,388.00
G19A-18/20-15P	18/20" Vent Free Variable Remote Burner, 30,000 btu - LP	\$1,388.00
G19A-24/30-15N	24/30" Vent Free Variable Remote Burner, 40,000 btu - NG	\$1,460.00
G19A-24/30-15P	24/30" Vent Free Variable Remote Burner, 34,000 btu - LP	\$1,460.00

### Electronic Remote Burners (-01)

G19A-18/20-01VN	18/20" Vent Free Electronic Remote Burner, 31,000 btu - NG	\$1,689.00
G19A-18/20-01VP	18/20" Vent Free Electronic Remote Burner, 30,000 btu - LP	\$1,689.00
G19A-24/30-01VN	24/30" Vent Free Electronic Remote Burner, 40,000 btu - NG	\$1,761.00
G19A-24/30-01VP	24/30" Vent Free Electronic Remote Burner, 34,000 btu - LP	\$1,761.00

### G19 Series Gas Logs Only

FTO-18	18" Foothill Oak Logs Only	\$381.00
FTO-24	24" Foothill Oak Logs Only	\$430.00
FTO-30	30" Foothill Oak Logs Only	\$518.00
FTSO-18	18" Foothill Split Oak Logs Only	\$414.00
FTSO-24	24" Foothill Split Oak Logs Only	\$470.00
FTSO-30	30" Foothill Split Oak Logs Only	\$564.00



**G19A**



**Foothill Oak**



**Foothill Split Oak**

SOME BRANDS ARE ONLY AVAILABLE IN SELECTED AREAS, SEE MAP ON PAGE 4 OR CONTACT YOUR REGIONAL SALES MANAGER FOR MORE INFO.

Pricing, model numbers and availability are subject to change without notice. Call for most current information.

❖ - Non Stock Special Order - NO RETURNS or CANCELATIONS

RMI Ph: 800-628-5044 Fax: 800-243-8341 [raymurray.com](http://raymurray.com) 229

Prices Reflect 4/1/22 Pricing

## G18 Series - Vent Free Burner Systems

Certified vent free burner with pre-assembled Control Valve and ODS Safety System, Glowing Embers, Bryte Coals, Lava-Fyre Granules, Wood chunks included.

MODEL NUMBER	DESCRIPTION	LIST PRICE
<b>Manual Burner</b>		
G18-16/18N ❖	16/18" Vent Free Manual Burner - NG	\$924.00
G18-24/30N ❖	24/30" Vent Free Manual Burner, 38,000 btu - NG	\$1,036.00



**G18**

<b>Variable Remote Burners (-15)</b>		
G18-16/18-15N	16/18" Vent Free Variable Remote Burner, 30,000 btu - NG	\$1,376.00
G18-16/18-15P	16/18" Vent Free Variable Remote Burner, 30,000 btu - LP	\$1,376.00
G18-24/30-15N	24/30" Vent Free Variable Remote Burner, 38,000 btu - NG	\$1,488.00
G18-24/30-15P	24/30" Vent Free Variable Remote Burner, 38,000 btu - LP	\$1,488.00



**ECV  
Evening Fyre Charred**

<b>Electronic Remote Burners (-01)</b>		
G18-16/18-01VN	16/18" Vent Free Electric Remote Burner, 30,000 btu - NG	\$1,677.00
G18-16/18-01VP	16/18" Vent Free Electronic Remote Burner, 30,000 btu - LP	\$1,677.00
G18-24/30-01VN	24/30" Vent Free Electric Remote Burner, 38,000 btu - NG	\$1,791.00
G18-24/30-01VP	24/30" Vent Free Electric Remote Burner, 38,000 btu - LP	\$1,791.00



**EFV  
Evening Fyre**

<b>G18 Series Gas Logs Only</b>		
ECV-16/18	16/18" Evening Fyre Charred Vent Free Logs Only	\$416.00
ECV-24	24" Evening Fyre Charred Vent Free Logs Only	\$476.00
ECV-30	30" Evening Fyre Charred Vent Free Logs Only	\$567.00
EFV-16/18	16/18" Evening Fyre Vent Free Logs Only	\$371.00
EFV-24	24" Evening Fyre Vent Free Logs Only	\$422.00
EFV-30	30" Evening Fyre Vent Free Logs Only	\$511.00
ESV-16/18	16/18" Evening Fyre Split Vent Free Logs Only	\$408.00
ESV-24	24" Evening Fyre Split Vent Free Logs Only	\$465.00
ESV-30	30" Evening Fyre Split Vent Free Logs Only	\$551.00



**ESV  
Evening Fyre Split**

SOME BRANDS ARE ONLY AVAILABLE IN SELECTED AREAS, SEE MAP ON PAGE 4 OR CONTACT YOUR REGIONAL SALES MANAGER FOR MORE INFO.

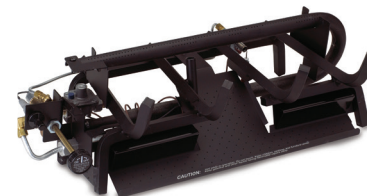
Pricing, model numbers and availability are subject to change without notice. Call for most current information.

Prices Reflect 4/1/22 Pricing

## G10 Series - Vent Free Burner Systems

Certified vent free burner with pre-assembled Control Valve and ODS Safety System, Glowing Embers, Bryte Coals, Lava-Fyre Granules included.

MODEL NUMBER	DESCRIPTION	LIST PRICE
<b>Manual Burners</b>		
G10-16/18N	16/18" Vent Free Manual Burner, 35,000 btu - NG	\$823.00
G10-16/18P ❖	16/18" Vent Free Manual Burner, 35,000 btu - LP	\$823.00
G10-24/30N	24/30" Vent Free Manual Burner, 37,000 btu - NG	\$920.00
G10-24/30P	24/30" Vent Free Manual Burner, 37,000 btu - LP	\$920.00

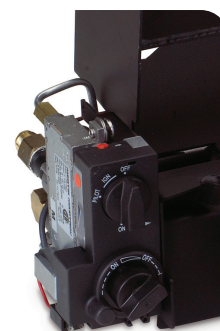


**G10 - Burner**

<b>Variable Remote Burners (-15)</b>		
G10-16/18-15N	16/18" Vent Free Variable Remote Burner, 35,000 btu - NG	\$1,263.00
G10-16/18-15P	16/18" Vent Free Variable Remote Burner, 35,000 btu - LP	\$1,263.00
G10-24/30-15N	24" Vent Free Variable Remote Burner, 37,000 btu - NG	\$1,360.00
G10-24/30-15P	24" Vent Free Variable Remote Burner, 37,000 btu - LP	\$1,360.00

**NOTE: G10 ON/OFF REMOTE BURNERS WITHOUT REMOTE LISTED ON NEXT PAGE.**

<b>Electronic Remote Burners (-01)</b>		
G10-16/18-01VN	16/18" Vent Free Electronic Remote Burner, 35,000 btu - NG	\$1,601.00
G10-16/18-01VP	16/18" Vent Free Electronic Remote Burner, 35,000 btu - LP	\$1,601.00
G10-24/30-01VN	24/30" Vent Free Electronic Remote Burner, 37,000 btu - NG	\$1,700.00
G10-24/30-01VP	24/30" Vent Free Electronic Remote Burner, 37,000 btu - LP	\$1,700.00



**15 Valve**

<b>SS Remote Burners</b>		
G10-24/30-15-SSN	24/30" SS Vent Free Variable Remote Burner, 37,000 btu - NG	\$1,945.00
G10-24/30-15-SSP	24/30" SS Vent Free Variable Remote Burner, 37,000 btu - LP	\$1,945.00

**Continued on next page**

Prices Reflect 4/1/22 Pricing

## G10 Series - Vent Free Burner Systems Cont.

MODEL NUMBER	DESCRIPTION	LIST PRICE
<b>Charred Frontier Oak</b>		
CHFR-16/18	16/18" Charred Frontier Oak Refractory Vent Free Logs Only	\$348.00
CHFR-24	24" Charred Frontier Oak Refractory Vent Free Logs Only	\$398.00
CHFR-30	30" Charred Frontier Oak Refractory Vent Free Logs Only	\$495.00



**CHFR**  
**Charred Frontier Oak**

<b>Charred Aged Split</b>		
CHAS-16/18	16/18" Charred Aged Split Refractory Vent Free Logs Only	\$382.00
CHAS-24	24" Charred Aged Split Refractory Vent Free Logs Only	\$439.00
CHAS-30	30" Charred Aged Split Refractory Vent Free Logs Only	\$540.00



**CHAS**  
**Charred Aged Split**

<b>Charred Alpine Birch</b>		
CHAB-16/18	16/18" Charred Alpine Birch Refractory Vent Free Logs Only	\$447.00
CHAB-24	24" Charred Alpine Birch Refractory Vent Free Logs Only	\$503.00
CHAB-30	30" Charred Alpine Birch Refractory Vent Free Logs Only	\$598.00



**CHAB Charred**  
**Alpine Birch**

<b>Charred Gnarled Split</b>		
CHGS-16/18	16/18" Charred Gnarled Split Vent Free Log Only	\$461.00
CHGS-24	24" Charred Gnarled Split Vent Free Log Only	\$524.00
CHGS-30	30" Charred Gnarled Split Vent Free Log Only	\$622.00



**CHGS**  
**Charred Gnarled Split**

<b>Gnarled Oak</b>		
GNO-16/18	16/18" Gnarled Oak Vent Free Log Only	\$431.00
GNO-24	24" Gnarled Oak Vent Free Log Only	\$486.00
GNO-30	30" Gnarled Oak Vent Free Log Only	\$576.00



**GNO**  
**Gnarled Oak**

SOME BRANDS ARE ONLY AVAILABLE IN SELECTED AREAS, SEE MAP ON PAGE 4 OR CONTACT YOUR REGIONAL SALES MANAGER FOR MORE INFO.

Pricing, model numbers and availability are subject to change without notice. Call for most current information.



Prices Reflect 4/1/22 Pricing

## G9 Series - Vent Free Burner Systems

Certified vent free burner with pre-assembled Control Valve and ODS Safety System, Glowing Embers, Bryte Coals, Lava-Fyre Granules included.

MODEL NUMBER	DESCRIPTION	LIST PRICE
<b>Manual Burner</b>		
G9-20/24/30N	20/24/30" Vent Free Manual Burner, 36,000 btu - NG	\$650.00
G9-20/24/30P	20/24/30" Vent Free Manual Burner, 36,000 btu - LP	\$650.00

### On/Off Remote Burners

G9-20/24/30-12N	20/24/30" Vent Free Remote Burner, 36,000 btu - NG	\$996.00
G9-20/24/30-12P	20/24/30" Vent Free Remote Burner, 36,000 btu - LP	\$996.00

### Variable Remote Burners (-15)

G9-20/24/30-15N	20/24/30" Vent Free Variable Remote Burner, 36,000 btu - NG	\$1,102.00
G9-20/24/30-15P	20/24/30" Vent Free Variable Remote Burner, 36,000 btu - LP	\$1,102.00

### G9 Series Gas Logs Only

RD9-20	20" Golden Oak Designer Vent Free Logs	\$278.00
RD9-24	24" Golden Oak Designer Vent Free Logs	\$302.00
RD9-30	30" Golden Oak Designer Vent Free Logs	\$380.00
S9-20	20" Split Oak Vent Free Logs	\$300.00
S9-24	24" Split Oak Vent Free Logs	\$328.00
S9-30	30" Split Oak Vent Free Logs	\$411.00



**G9 - Burner**



**RD9 - Golden Oak**



**S9 - Split Oak**

SOME BRANDS ARE ONLY AVAILABLE IN SELECTED AREAS, SEE MAP ON PAGE 4 OR CONTACT YOUR REGIONAL SALES MANAGER FOR MORE INFO.

Pricing, model numbers and availability are subject to change without notice. Call for most current information.

❖ - Non Stock Special Order - NO RETURNS or CANCELATIONS

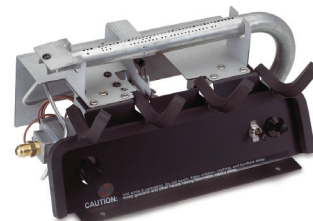
RMI Ph: 800-628-5044 Fax: 800-243-8341 raymurray.com 233

Prices Reflect 4/1/22 Pricing

## G8E Series - Vent Free Burner Systems

Certified vent free burner with pre-assembled Control Valve and ODS Safety System, Decorative Front Panel Included.

MODEL NUMBER	DESCRIPTION	LIST PRICE
<b>Manual Burner</b>		
G8E-16/20/24N	16/20/24" Vent Free Manual Burner - 20,000 btu - NG	\$475.00
G8E-16/20/24P	16/20/24" Vent Free Manual Burner - 20,000 btu - LP	\$475.00
<b>On/Off Remote Burners</b>		
G8E-16/20/24-12N	16/20/24" Vent Free Remote Burner - 20,000 btu - NG	\$822.00
G8E-16/20/24-12P	16/20/24" Vent Free Remote Burner - 20,000 btu - LP	\$822.00
G8E-16/20/24R-12N	16/20/24" Vent Free Remote Burner - 9,500 btu - NG	\$822.00
G8E-16/20/24R-12P	16/20/24" Vent Free Remote Burner - 9,500 btu - LP	\$822.00
<b>G8 Series Gas Logs Only</b>		
VO8E-16	16" Valley Oak Vent Free Logs Only	\$285.00
VO8E-20	20" Valley Oak Vent Free Logs Only	\$323.00
VO8E-24	24" Valley Oak Vent Free Logs Only	\$360.00



**G8E - Burner**



**V08 - Valley Oak**

SOME BRANDS ARE ONLY AVAILABLE IN SELECTED AREAS, SEE MAP ON PAGE 4 OR CONTACT YOUR REGIONAL SALES MANAGER FOR MORE INFO.

Pricing, model numbers and availability are subject to change without notice. Call for most current information.

Prices Reflect 4/1/22 Pricing

## Glass Burners

MODEL NUMBER	DESCRIPTION	LIST PRICE
<b>G21 Series ANI Certified Burner System - Vent Free</b>		
The G21 Series is available in NG or LP in 18", 24" & 30" models. Remote Burners.		
G21-GL-18-12N	18" Glass Burner w/ On/Off Remote and Connector Kit, 30,000 btu - NG	\$1,394.00
G21-GL-18-12P	18" Glass Burner w/ On/Off Remote and Connector Kit, 27,000 btu - LP	\$1,394.00
G21-GL-24-12N	24" Glass Burner w/ On/Off Remote and Connector Kit, 35,000 btu - NG	\$1,503.00
G21-GL-24-12P	24" Glass Burner w/ On/Off Remote and Connector Kit, 30,000 btu - LP	\$1,503.00
G21-GL-30-12N	30" Glass Burner w/ On/Off Remote and Connector Kit, 40,000 btu - NG	\$1,566.00
G21-GL-30-12P	30" Glass Burner w/ On/Off Remote and Connector Kit, 35,000 btu - LP	\$1,566.00

### NOTE:

- 18" BURNER TAKES 7 1/2 LBS OF GLASS
- 24" BURNER TAKES 10 LBS OF GLASS
- 30" BURNER TAKES 15 LBS OF GLASS



**G21-GL**



**G21-GL**

### Features:

- 304 Stainless Steel
- Polished Mirror Finish

**SOME BRANDS ARE ONLY AVAILABLE IN SELECTED AREAS, SEE MAP ON PAGE 4 OR CONTACT YOUR REGIONAL SALES MANAGER FOR MORE INFO.**

Pricing, model numbers and availability are subject to change without notice. Call for most current information.

❖ – Non Stock Special Order - NO RETURNS or CANCELATIONS

**RMI Ph: 800-628-5044 Fax: 800-243-8341 raymurray.com 235**

Prices Reflect 4/1/22 Pricing

## Glass Media

MODEL NUMBER	DESCRIPTION	LIST PRICE
<b>Fyre Glass - 10# Bag</b>		
GL-10-F	Azurria Glass 10# Bag	\$98.00
GL-10-B	Black Glass 10# Bag	\$98.00
GL-10-Z	Bronze Glass 10# Bag	\$98.00
GL-10-W	Star Fyre Glass 10# Bag	\$98.00
GL-10-C	Clear Glass 10# Bag	\$98.00
GL-10-N	Caribbean Blue Glass 10# Bag	\$98.00
GL-10-E ❖	Emerald Glass 10# Bag	\$98.00

## Reflective Fyre Glass - 10# Bag

GL-10-FR	Azurria Reflective Glass 10# Bag	\$107.00
GL-10-BR	Black Reflective Glass 10# Bag	\$107.00
GL-10-ZR	Bronze Reflective Glass 10# Bag	\$107.00
GL-10-NR	Caribbean Reflective Glass 10# Bag	\$107.00
GL-10-QR	Copper Reflective Glass 10# Bag	\$107.00
GL-10-ER	Emerald Reflective Glass 10# Bag	\$107.00
GL-10-HR	Gold Reflective Glass 10# Bag	\$107.00
GL-10-CR	Champagne Reflective Glass 10# Bag	\$107.00

## Fyre Gems - 10# Bag

GLG-10-J	Black Pearl Gems 10# Bag	\$82.00
GLG-10-T	Blue Topaz Gems 10# Bag	\$82.00
GLG-10-D	Champagne Gems 10# Bag	\$82.00
GLG-10-A	Deep Amber Gems 10# Bag	\$82.00
GLG-10-C	Glacier Gems 10# Bag	\$82.00
GLG-10-S	Sapphire Gems 10# Bag	\$82.00

## Reflective Fyre Glass - 10# Jar

GL-10J-BR	Black Reflective Glass 10# Jar	\$114.00
GL-10J-HR	Gold Reflective Glass 10# Jar	\$114.00
GL-10J-QR ❖	Copper Reflective Glass 10# Jar	\$114.00
GL-10J-ZR ❖	Bronze Reflective Glass 10# Jar	\$114.00

## Reflective Fyre Glass - 40# Bucket

GL-40-BR	Black Reflective Glass 40# Bucket	\$423.00
GL-40-ZR	Bronze Reflective Glass 40# Bucket	\$423.00
GL-40-QR	Copper Reflective Glass 40# Bucket	\$423.00
GL-40-HR	Gold Reflective Glass 40# Bucket	\$423.00
GL-40-CR	Champagne Reflective Glass 40# Bucket	\$423.00



**Black Reflective Glass**



**Caribbean Blue Glass**



**Glacier Gems**

SOME BRANDS ARE ONLY AVAILABLE IN SELECTED AREAS, SEE MAP ON PAGE 4 OR CONTACT YOUR REGIONAL SALES MANAGER FOR MORE INFO.

Pricing, model numbers and availability are subject to change without notice. Call for most current information.



Prices Reflect 4/1/22 Pricing

## Accessories for Vent Free Log Sets

MODEL NUMBER	DESCRIPTION	LIST PRICE
<b>Remote Compatible Options</b>		
RR-1A	Basic On/Off Receiver/Transmitter Set	\$117.00
RR-2A	Deluxe On/Off Receiver/Transmitter Set	\$169.00
VR-1A	Basic Variable Receiver/Transmitter Set for "15" Models	\$142.00
VR-2A	Deluxe Variable Receiver/Transmitter Set for "15" Models	\$193.00
WCDC-1	Wood Chunk Decorative Cover	\$49.00
PCDC-1	Pine Cone Decorative Cover	\$53.00
WCBC-1	Charred Birch Decorative Cover	\$58.00
WCAB-1	Charred Birch Decorative Wood Chunk	\$57.00
WS-1	Wall Switch, Cover and Wiring (for 12" product only)	\$67.00
WS-2	Wall Timer, Cover and Wiring (for 12" product only)	\$165.00
WS-3	Wall Switch, Cover and Wiring (for 15" product only)	\$82.00
RF-BTSR1-G	On/Off BluetoothControl w/Golden Oak Cover	\$222.00
RF-BTSR1-B	On/Off BluetoothControl w/White Birch Cover	\$228.00

## Accessories

WC-6	6 Wood Chips	\$62.00
WCH-6	6 Charred Wood Chips	\$69.50
DP-2	Valley Oak Wood Chips and Pine Cones	\$69.50
LF-5	Lava Fyre Granules - 5#	\$23.00
PC-4	4 Designer Pine Cones	\$51.83
AC-6	6 Acorns	\$44.33

## Oxygen Depletion Sensors/Replacement Embers

ODS-0001	Oxygen Depletion Sensor - NG	\$65.00
ODS-0002	Oxygen Depletion Sensor - LP	\$65.00
ODS-0003	Oxygen Depletion Sensor for 12" Valve - NG	\$125.00
ODS-0004	Oxygen Depletion Sensor for 12" Valve - LP	\$125.00
P-EM-10	Replacement Embers (G10, G18, G19A)	\$21.00



**RR - 1A**



**VR - 1A**



**DP - 2**



**Bluetooth Control**



**Bluetooth Control with Cover**

SOME BRANDS ARE ONLY AVAILABLE IN SELECTED AREAS, SEE MAP ON PAGE 4 OR CONTACT YOUR REGIONAL SALES MANAGER FOR MORE INFO.

Pricing, model numbers and availability are subject to change without notice. Call for most current information.

❖ - Non Stock Special Order - NO RETURNS or CANCELATIONS

RMI Ph: 800-628-5044 Fax: 800-243-8341 raymurray.com 237