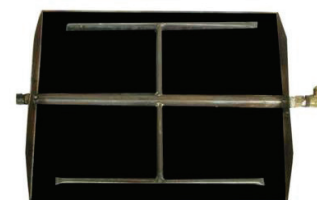


Prices Reflect 4/1/22 Pricing

See-Thru Vented / Vent Free Multi Sided Gas Log Sets

MODEL NUMBER	DESCRIPTION	LIST PRICE
G45-2 Vented Burners – NO SAFETY PILOT (Radco)		
G45-2-18/20N	18/20" See-Thru Vented Burner w/ NO SAFETY PILOT, 85,000 btu - NG	\$353.00
G45-2-24N	24" See-Thru Vented Burner w/ NO SAFETY PILOT, 105,000 btu - NG	\$381.00
G45-2-24P	24" See-Thru Vented Burner w/ NO SAFETY PILOT, 105,000 btu - LP	\$381.00
G45-2-30N	30" See-Thru Vented Burner w/ NO SAFETY PILOT, 110,000 btu - NG	\$443.00
GX45-2-24N	24" See-Thru Vented Burner w/ NO SAFETY PILOT, 105,000 btu - NG	\$440.00
GX45-2-24P	24" See-Thru Vented Burner w/ NO SAFETY PILOT, 105,000 btu - LP	\$440.00
GX45-2-30N	30" See-Thru Vented Burner w/ NO SAFETY PILOT, 110,000 btu - NG	\$510.00



G45 See-Thru

G45-2 Vented Manual Burner w/ SPK Safety Pilot		
G45-2-18/20-AN	18/20" See-Thru Manual Vented Burner, 85,000 btu - NG	\$650.00
G45-2-18/20-AP ❖	18/20" See-Thru Manual Vented Burner, 60,000 btu - LP	\$650.00
G45-2-24AN	24" See-Thru Manual Vented Burner, 105,000 btu - NG	\$676.00
G45-2-24AP	24" See-Thru Manual Vented Burner, 70,000 btu - LP	\$676.00
G45-2-30AN ❖	30" See-Thru Manual Vented Burner, 110,000 btu - NG	\$740.00
G45-2-30AP ❖	30" See-Thru Manual Vented Burner, 90,000 btu - LP	\$740.00

G45-2 Vented On/Off Remote Burner (-11)		
G45-2-18/20-11N	18/24" See-Thru Vented Burner w/ On/Off Remote, 85,000 btu - NG	\$1,025.00
G45-2-18/20-11P	18/24" See-Thru Vented Burner w/ On/Off Remote, 85,000 btu - LP	\$1,025.00
G45-2-24-11N	24" See-Thru Vented Burner w/ On/Off Remote, 105,000 btu - NG	\$1,052.00
G45-2-24-11P	24" See-Thru Vented Burner w/ On/Off Remote, 105,000 btu - LP	\$1,052.00
G45-2-30-11N	30" See-Thru Vented Burner w/ On/Off Remote, 110,000 btu - NG	\$1,115.00
G45-2-30-11P	30" See-Thru Vented Burner w/ On/Off Remote, 110,000 btu - LP	\$1,115.00

G45-2 Vented Variable Remote Burners (-15)		
G45-2-18/20-15N	18/20" See-Thru Vented Burner w/ Variable Remote, 85,000 btu - NG	\$1,087.00
G45-2-18/20-15P	18/20" See-Thru Vented Burner w/ Variable Remote, 85,000 btu - LP	\$1,087.00

Continued on next page

SOME BRANDS ARE ONLY AVAILABLE IN SELECTED AREAS, SEE MAP ON PAGE 4 OR CONTACT YOUR REGIONAL SALES MANAGER FOR MORE INFO.

Pricing, model numbers and availability are subject to change without notice. Call for most current information.

❖ – Non Stock Special Order - NO RETURNS or CANCELATIONS

RMI Ph: 800-628-5044 Fax: 800-243-8341 raymurray.com 241

Prices Reflect 4/1/22 Pricing

See-Thru Vented/Vent Free Multi Sided Gas Log Sets - Cont.

MODEL NUMBER	DESCRIPTION	LIST PRICE
G45-2 Vented Variable Remote Burners (-15) - Continued		
G45-2-24-15N	24" See-Thru Vented Burner w/ Variable Remote, 105,000 btu - NG	\$1,113.00
G45-2-24-15P	24" See-Thru Vented Burner w/ Variable Remote, 70,000 btu - LP	\$1,113.00
G45-2-30-15N	30" See-Thru Vented Burner w/ Variable Remote, 110,000 btu - NG	\$1,177.00
G45-2-30-15P	30" See-Thru Vented Burner w/ Variable Remote, 90,000 btu - LP	\$1,177.00
G45-2 Vented Variable Remote Burners (-17)		
G45-2-18/20-17N	18" See-Thru Vented 2 Sided Burner w/Remote - NG	\$1,026.00
G45-2-24-17N	24" See-Thru Vented 2 Sided Burner w/Variable Remote - NG	\$1,056.00
G45-2 Vented Electronic Ignition Remote Burners (-02)		
G45-2-18/20-02N	18/20" See-Thru Vented -02 - NG	\$1,326.00
G45-2-18/20-02P	18/20" See-Thru Vented -02 - LP	\$1,326.00
G45-2-24-02N	24" See-Thru Vented -02 - NG	\$1,356.00
G45-2-24-02P	24" See-Thru Vented -02 - LP	\$1,356.00
G45-2-30-02N	30" See-Thru Vented -02 - NG	\$1,428.00
G45-2-30-02P ❖	30" See-Thru Vented -02 - LP	\$1,428.00

Continued on next page

SOME BRANDS ARE ONLY AVAILABLE IN SELECTED AREAS, SEE MAP ON PAGE 4 OR CONTACT YOUR REGIONAL SALES MANAGER FOR MORE INFO.

Pricing, model numbers and availability are subject to change without notice. Call for most current information.

Prices Reflect 4/1/22 Pricing

See-Thru Vented / Vent Free Multi Sided Gas Log Sets - Cont.

MODEL NUMBER	DESCRIPTION	LIST PRICE
Charred Series - See-Thru Logs		
CHD-2-16 ❖	16" Charred Oak See-Thru Vented Logs Only	\$406.00
CHD-2-18/20	18/20" Charred Oak See-Thru Vented Logs Only	\$457.00
CHD-2-24	24" Charred Oak See-Thru Vented Logs Only	\$533.00
CHD-2-30	30" Charred Oak See-Thru Vented Logs Only	\$691.00
CHRRSO-2-18/20	18/20" Charred Rugged Split Oak See-Thru Vented Logs Only	\$507.00
CHRRSO-2-24	24" Charred Rugged Split Oak See-Thru Vented Logs Only	\$600.00
CHRRSO-2-30	30" Charred Rugged Split Oak See-Thru Vented Logs Only	\$739.00
CHAO-2-18/20	18/20" American Charred Oak See-Thru Vented Logs Only	\$552.00
CHAO-2-24	24" American Charred Oak See-Thru Vented Logs Only	\$641.00
CHAO-2-30	30" American Charred Oak See-Thru Vented Logs Only	\$810.00
CHB-2-24 *	24" Charred Royal English Oak See-Thru Vented Logs Only	\$660.00
CHB-2-30 * ❖	30" Charred Royal English Oak See-Thru Vented Logs Only	\$824.00

*USES GX45-2 BURNER W/HEAVY DUTY GRATE

Designer Series - See-Thru Logs

RDP-2-16 ❖	16" Golden Oak Designer Plus See-Thru Vented Logs Only	\$298.00
RDP-2-18	18" Golden Oak Designer Plus See-Thru Vented Logs Only	\$353.00
RDP-2-24	24" Golden Oak Designer Plus See-Thru Vented Logs Only	\$460.00
RDP-2-30	30" Golden Oak Designer Plus See-Thru Vented Logs Only	\$595.00
AO-2-18	18" American Oak See-Thru Vented Logs Only	\$473.00
AO-2-24	24" American Oak See-Thru Vented Logs Only	\$552.00
AO-2-30	30" American Oak See-Thru Vented Logs Only	\$704.00
SDP-2-18	18" Split Oak Designer Plus See-Thru Vented Logs Only	\$435.00
SDP-2-24	24" Split Oak Designer Plus See-Thru Vented Logs Only	\$512.00
SDP-2-30	30" Split Oak Designer Plus See-Thru Vented Logs Only	\$661.00
RRSO-2-18	18" Rugged Split Oak See-Thru Vented Logs Only	\$462.00
RRSO-2-24	24" Rugged Split Oak See-Thru Vented Logs Only	\$527.00
RRSO-2-30	30" Rugged Split Oak See-Thru Vented Logs Only	\$641.00
MBW-2-18	18" Mountain Birch See-Thru Vented Logs Only	\$473.00
MBW-2-24	24" Mountain Birch See-Thru Vented Logs Only	\$517.00
MBW-2-30	30" Mountain Birch See-Thru Vented Logs Only	\$629.00

Classic Series - See-Thru

R-2-18	18" Golden Oak See-Thru Vented Logs Only	\$231.00
R-2-24	24" Golden Oak See-Thru Vented Logs Only	\$259.00



CHD-2 Charred Oak See-Thru Log Set



CHRRSO-2 Charred Rugged Split Oak See-Thru Log Set



RDP-2 Golden Oak See Thru Log Set



RRSO-2 Rugged Split Oak See-Thru Log Set

Continued on next page

SOME BRANDS ARE ONLY AVAILABLE IN SELECTED AREAS, SEE MAP ON PAGE 4 OR CONTACT YOUR REGIONAL SALES MANAGER FOR MORE INFO.

Pricing, model numbers and availability are subject to change without notice. Call for most current information.

❖ - Non Stock Special Order - NO RETURNS or CANCELATIONS

RMI Ph: 800-628-5044 Fax: 800-243-8341 raymurray.com 243

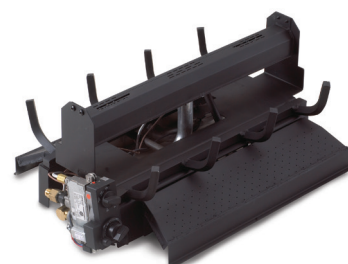
Prices Reflect 4/1/22 Pricing

See-Thru Vented/Vent Free Multi Sided Gas Log Sets

MODEL NUMBER	DESCRIPTION	LIST PRICE
G21-GL-2 Vent Free On/Off See-Thru Remote Burners		
G21-GL-2-18-12N	18" See-Thru Glass Burner w/ Remote, 45,000 btu - NG	\$1,633.00
G21-GL-2-24-12N	24" See-Thru Glass Burner w/ Remote, 55,000 btu - NG	\$1,750.00
G18-2-24/30 Vent Free Variable See-Thru Remote Burners & Logs		
G18-2-24/30-15N	24/30" See-Thru Vent Free Variable Remote Burner, 55,000 btu- NG	\$1,769.00
G18-2-24/30-15P	24/30" See-Thru Vent Free Variable Remote Burner, 50,000 btu- LP	\$1,769.00
ECV-2-24	24" Evening Fyre Charred See-Thru Vent Free Logs Only	\$587.00
ESV-2-24	24" Evening Fyre Split See-Thru Vent Free Logs Only	\$576.00
EFV-2-24	24" Evening Fyre See-Thru Vent Free Log Only	\$537.00
G18-2-16/18 Vent Free Variable See-Thru Remote Burners & Logs		
G18-2-16/18-15N	16/18" See-Thru Vent Free Variable Remote - NG	\$1,657.00
G18-2-16/18-15P	16/18" See-Thru Vent Free Variable Remote - LP	\$1,657.00
ECV-2-16/18	16/18" Evening Fyre Charred See-Thru Vent Free Logs	\$528.00
ESV-2-16/18	16/18" Evening Fyre Split See-Thru Vent Free Logs	\$515.00
EFV-2-16/18	16/18" Evening Fyre See-Thru Vent Free Logs Only	\$476.00
G9-2 Vent Free On/Off See-Thru Remote Burner & Log		
G9-2-24-12N	24" Vent Free On/Off See-Thru Remote Burners and Logs, 39,000 btu - NG	\$1,315.00
S9-2-24	24" Split Oak See-Thru Vent Free Logs Only	\$448.00
RD9-2-24	24" Golden Oak Designer See-Thru Vent Free Logs Only	\$402.00



G21-GL-2



G18-2



ECV-2-24

SOME BRANDS ARE ONLY AVAILABLE IN SELECTED AREAS, SEE MAP ON PAGE 4 OR CONTACT YOUR REGIONAL SALES MANAGER FOR MORE INFO.

Pricing, model numbers and availability are subject to change without notice. Call for most current information.