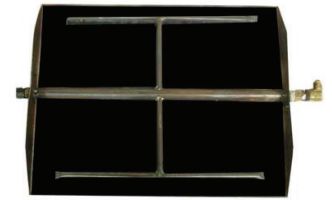


See-Thru Vented Burners and Logs

MODEL NUMBER	DESCRIPTION	LIST PRICE
G45-2 Vented Burners – RADCO - No Valve		
G45-2-18/20N	18/20" See-Thru Vented Burner, Safety Pilot is Optional, 80,000 btu - NG	\$400.00
G45-2-24N	24" See-Thru Vented Burner, Safety Pilot is Optional, 90,000 btu - NG	\$432.00
G45-2-24P	24" See-Thru Vented Burner, Includes SPK26P Safety Pilot, 75,000 btu - LP	\$648.00
G45-2-30N	30" See-Thru Vented Burner, Safety Pilot is Optional, 90,000 btu - NG	\$503.00
G45-2-30P ❖	30" See-Thru Vented Burner, Includes SPK26P Safety Pilot, 75,000 btu - LP	\$719.00
GX45-2-24N	24" See-Thru Vented Burner, Safety Pilot is Optional, 90,000 btu - NG	\$496.00
GX45-2-24P ❖	24" See-Thru Vented Burner, Includes SPK26P Safety Pilot, 75,000 btu - LP	\$712.00
GX45-2-30N	30" See-Thru Vented Burner, Safety Pilot is Optional, 90,000 btu - NG	\$576.00
GX45-2-30P ❖	30" See-Thru Vented Burner, Includes SPK26P Safety Pilot, 75,000 btu - LP	\$792.00



G45 See-Thru

Minimum Fireplace Size
G45-2 RADCO Listed (with Safety Pilot Kit)*

	Width	Depth	Height
G45-2-16/19 (16" Log Set)	28"	15"	17"
G45-2-16/19 (19" Log Set)	28"	15"	17"
G45-2-18/20	31"	17"	17"
G45-2-24	36"	17"	17"
G45-2-30	42"	17"	17"
G45-2-36	48"	22"	17"
G45-2-42	55"	22"	17"
G45-2-48	61"	22"	17"

* LP models require safety pilot, NG models it is optional.

Minimum Fireplace Size
G45-GL ANSI Certified Manual (A), 17, 11, 15, 02 Series

	Width*	Depth	Height
G45-2-16/19	29"	15"	17"
G45-2-18/20	30"	17"	17"
G45-2-24	34"	17"	17"
G45-2-30	40"	17"	17"
G45-2-36	46"	22"	17"

* Add 2" to the width for factory installed 02 series.

G45-2 Vented Manual Burner w/ SPK Safety Pilot

G45-2-18/20-AN	18/20" See-Thru Manual Vented Burner, 85,000 btu - NG	\$737.00
G45-2-18/20-AP ❖	18/20" See-Thru Manual Vented Burner, 60,000 btu - LP	\$737.00
G45-2-24AN	24" See-Thru Manual Vented Burner, 105,000 btu - NG	\$766.00
G45-2-24AP	24" See-Thru Manual Vented Burner, 70,000 btu - LP	\$766.00
G45-2-30AN ❖	30" See-Thru Manual Vented Burner, 110,000 btu - NG	\$839.00
G45-2-30AP ❖	30" See-Thru Manual Vented Burner, 90,000 btu - LP	\$839.00

G45-2 Vented On/Off Remote Burner (-11)

G45-2-18/20-11N	18/24" See-Thru Vented Burner w/ On/Off Remote, 85,000 btu - NG	\$1,162.00
G45-2-18/20-11P	18/24" See-Thru Vented Burner w/ On/Off Remote, 60,000 btu - LP	\$1,162.00
G45-2-24-11N	24" See-Thru Vented Burner w/ On/Off Remote, 105,000 btu - NG	\$1,192.00
G45-2-24-11P	24" See-Thru Vented Burner w/ On/Off Remote, 70,000 btu - LP	\$1,192.00
G45-2-30-11N	30" See-Thru Vented Burner w/ On/Off Remote, 110,000 btu - NG	\$1,264.00
G45-2-30-11P	30" See-Thru Vented Burner w/ On/Off Remote, 90,000 btu - LP	\$1,264.00

Continued on next page

SOME BRANDS ARE ONLY AVAILABLE IN SELECTED AREAS, SEE MAP ON PAGE 4 OR CONTACT YOUR REGIONAL SALES MANAGER FOR MORE INFO.

Pricing, model numbers and availability are subject to change without notice. Call for most current information.

❖ – Non Stock Special Order - NO RETURNS or CANCELLATIONS

RMI Ph: 800-628-5044

raymurray.com

253

See-Thru Vented Burners and Logs - Cont.

MODEL NUMBER	DESCRIPTION	LIST PRICE
G45-2 Vented Variable Remote Burners (-15)		
G45-2-18/20-15N	18/20" See-Thru Vented Burner w/ Variable Remote, 85,000 btu - NG	\$1,232.00
G45-2-18/20-15P	18/20" See-Thru Vented Burner w/ Variable Remote, 60,000 btu - LP	\$1,232.00
G45-2-24-15N	24" See-Thru Vented Burner w/ Variable Remote, 105,000 btu - NG	\$1,262.00
G45-2-24-15P	24" See-Thru Vented Burner w/ Variable Remote, 70,000 btu - LP	\$1,262.00
G45-2-30-15N	30" See-Thru Vented Burner w/ Variable Remote, 110,000 btu - NG	\$1,334.00
G45-2-30-15P	30" See-Thru Vented Burner w/ Variable Remote, 90,000 btu - LP	\$1,334.00
G45-2 Vented Variable Remote Burners (-17)		
G45-2-18/20-17N	18" See-Thru Vented Burner w/Remote, 85,000 btu - NG	\$1,072.00
G45-2-24-17N	24" See-Thru Vented Burner w/Variable Remote, 105,000 btu - NG	\$1,104.00
G45-2 Vented Electronic Ignition Remote Burners (-02)		
G45-2-18/20-02N	18/20" See-Thru Vented Burner, 85,000 - NG	\$1,386.00
G45-2-18/20-02P	18/20" See-Thru Vented Burner, 60,000 - LP	\$1,386.00
G45-2-24-02N	24" See-Thru Vented Burner, 105,000 - NG	\$1,417.00
G45-2-24-02P	24" See-Thru Vented Burner, 70,000 - LP	\$1,417.00
G45-2-30-02N	30" See-Thru Vented Burner, 110,000 - NG	\$1,492.00
G45-2-30-02P ❖	30" See-Thru Vented Burner, 90,000 - LP	\$1,492.00

Continued on next page

SOME BRANDS ARE ONLY AVAILABLE IN SELECTED AREAS, SEE MAP ON PAGE 4 OR CONTACT YOUR REGIONAL SALES MANAGER FOR MORE INFO.

Pricing, model numbers and availability are subject to change without notice. Call for most current information.

See-Thru Vented Burners and Logs - Cont.

MODEL NUMBER	DESCRIPTION	LIST PRICE
Charred Series - See-Thru Logs		
CHD-2-16 ❖	16" Charred Oak See-Thru Vented Logs Only	\$458.00
CHD-2-18/20	18/20" Charred Oak See-Thru Vented Logs Only	\$516.00
CHD-2-24	24" Charred Oak See-Thru Vented Logs Only	\$602.00
CHD-2-30	30" Charred Oak See-Thru Vented Logs Only	\$780.00
CHRRSO-2-18/20	18/20" Charred Rugged Split Oak See-Thru Vented Logs Only	\$573.00
CHRRSO-2-24	24" Charred Rugged Split Oak See-Thru Vented Logs Only	\$677.00
CHRRSO-2-30	30" Charred Rugged Split Oak See-Thru Vented Logs Only	\$834.00
CHAO-2-18/20	18/20" American Charred Oak See-Thru Vented Logs Only	\$623.00
CHAO-2-24	24" American Charred Oak See-Thru Vented Logs Only	\$723.00
CHAO-2-30	30" American Charred Oak See-Thru Vented Logs Only	\$912.00
CHB-2-24 *	24" Charred Royal English Oak See-Thru Vented Logs Only	\$743.00
CHB-2-30 * ❖	30" Charred Royal English Oak See-Thru Vented Logs Only	\$930.00

*USES GX45-2 BURNER W/HEAVY DUTY GRATE

Designer Series - See-Thru Logs

RDP-2-16 ❖	16" Golden Oak Designer Plus See-Thru Vented Logs Only	\$336.00
RDP-2-18	18" Golden Oak Designer Plus See-Thru Vented Logs Only	\$398.00
RDP-2-24	24" Golden Oak Designer Plus See-Thru Vented Logs Only	\$579.00
RDP-2-30	30" Golden Oak Designer Plus See-Thru Vented Logs Only	\$672.00
AO-2-18 ❖	18" American Oak See-Thru Vented Logs Only	\$534.00
AO-2-24	24" American Oak See-Thru Vented Logs Only	\$623.00
AO-2-30	30" American Oak See-Thru Vented Logs Only	\$791.00
SDP-2-18	18" Split Oak Designer Plus See-Thru Vented Logs Only	\$491.00
SDP-2-24	24" Split Oak Designer Plus See-Thru Vented Logs Only	\$579.00
SDP-2-30	30" Split Oak Designer Plus See-Thru Vented Logs Only	\$746.00
RRSO-2-18	18" Rugged Split Oak See-Thru Vented Logs Only	\$521.00
RRSO-2-24	24" Rugged Split Oak See-Thru Vented Logs Only	\$595.00
RRSO-2-30	30" Rugged Split Oak See-Thru Vented Logs Only	\$723.00
MBW-2-18	18" Mountain Birch See-Thru Vented Logs Only	\$529.00
MBW-2-24	24" Mountain Birch See-Thru Vented Logs Only	\$578.00
MBW-2-30	30" Mountain Birch See-Thru Vented Logs Only	\$703.00

Classic Series - See-Thru Logs

R-2-18	18" Golden Oak See-Thru Vented Logs Only	\$260.00
R-2-24	24" Golden Oak See-Thru Vented Logs Only	\$293.00



CHD-2 Charred Oak



CHRRSO-2 Charred Rugged Split Oak



RDP-2 Golden Oak



RRSO-2 Rugged Split Oak

Continued on next page

SOME BRANDS ARE ONLY AVAILABLE IN SELECTED AREAS, SEE MAP ON PAGE 4 OR CONTACT YOUR REGIONAL SALES MANAGER FOR MORE INFO.

Pricing, model numbers and availability are subject to change without notice. Call for most current information.

❖ - Non Stock Special Order - NO RETURNS or CANCELLATIONS

RMI Ph: 800-628-5044

raymurray.com

255

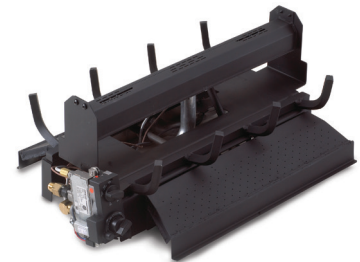
See-Thru Vent Free Burners and Logs

MODEL NUMBER	DESCRIPTION	LIST PRICE
G21-GL-2 Vent Free On/Off See-Thru Remote Burners		
G21-GL-2-18-12N	18" See-Thru Glass Burner w/ Remote, 45,000 btu - NG	\$1,707.00
G21-GL-2-24-12N	24" See-Thru Glass Burner w/ Remote, 55,000 btu - NG	\$1,829.00



G21-GL-2

G18-2-24/30 Vent Free Variable See-Thru Remote Burners & Logs		
G18-2-24/30-15N	24/30" See-Thru Vent Free Variable Remote Burner, 55,000 btu- NG	\$1,849.00
G18-2-24/30-15P	24/30" See-Thru Vent Free Variable Remote Burner, 50,000 btu- LP	\$1,849.00
ECV-2-24	24" Evening Fyre Charred See-Thru Vent Free Logs Only	\$613.00
ESV-2-24	24" Evening Fyre Split See-Thru Vent Free Logs Only	\$602.00
EFV-2-24	24" Evening Fyre See-Thru Vent Free Log Only	\$561.00



G18-2

G18-2-16/18 Vent Free Variable See-Thru Remote Burners & Logs		
G18-2-16/18-15N	16/18" See-Thru Vent Free Variable Remote - NG	\$1,732.00
G18-2-16/18-15P	16/18" See-Thru Vent Free Variable Remote - LP	\$1,732.00
ECV-2-16/18 ❖	16/18" Evening Fyre Charred See-Thru Vent Free Logs	\$552.00
ESV-2-16/18	16/18" Evening Fyre Split See-Thru Vent Free Logs	\$538.00
EFV-2-16/18 ❖	16/18" Evening Fyre See-Thru Vent Free Logs Only	\$497.00



ECV-2-24

G9-2 Vent Free On/Off See-Thru Remote Burner & Log		
G9-2-24-12N	24" Vent Free On/Off See-Thru Remote Burners and Logs, 39,000 btu - NG	\$1,374.00
S9-2-24	24" Split Oak See-Thru Vent Free Logs Only	\$468.00
RD9-2-24	24" Golden Oak Designer See-Thru Vent Free Logs Only	\$420.00
M9-2-24 NEW	24" Meadow Oak Log Set	\$435.00

Minimum Fireplace Size

	Width	Depth	Height
G21-GL-2-18	22"	16"	17"
G21-GL-2-24	28"	16"	17"
G18-2-16/18	22"	18"	17"
G18-2-24	26"	18"	17"
G9-2-24	28"	18"	17"

SOME BRANDS ARE ONLY AVAILABLE IN SELECTED AREAS, SEE MAP ON PAGE 4 OR CONTACT YOUR REGIONAL SALES MANAGER FOR MORE INFO.

Pricing, model numbers and availability are subject to change without notice. Call for most current information.