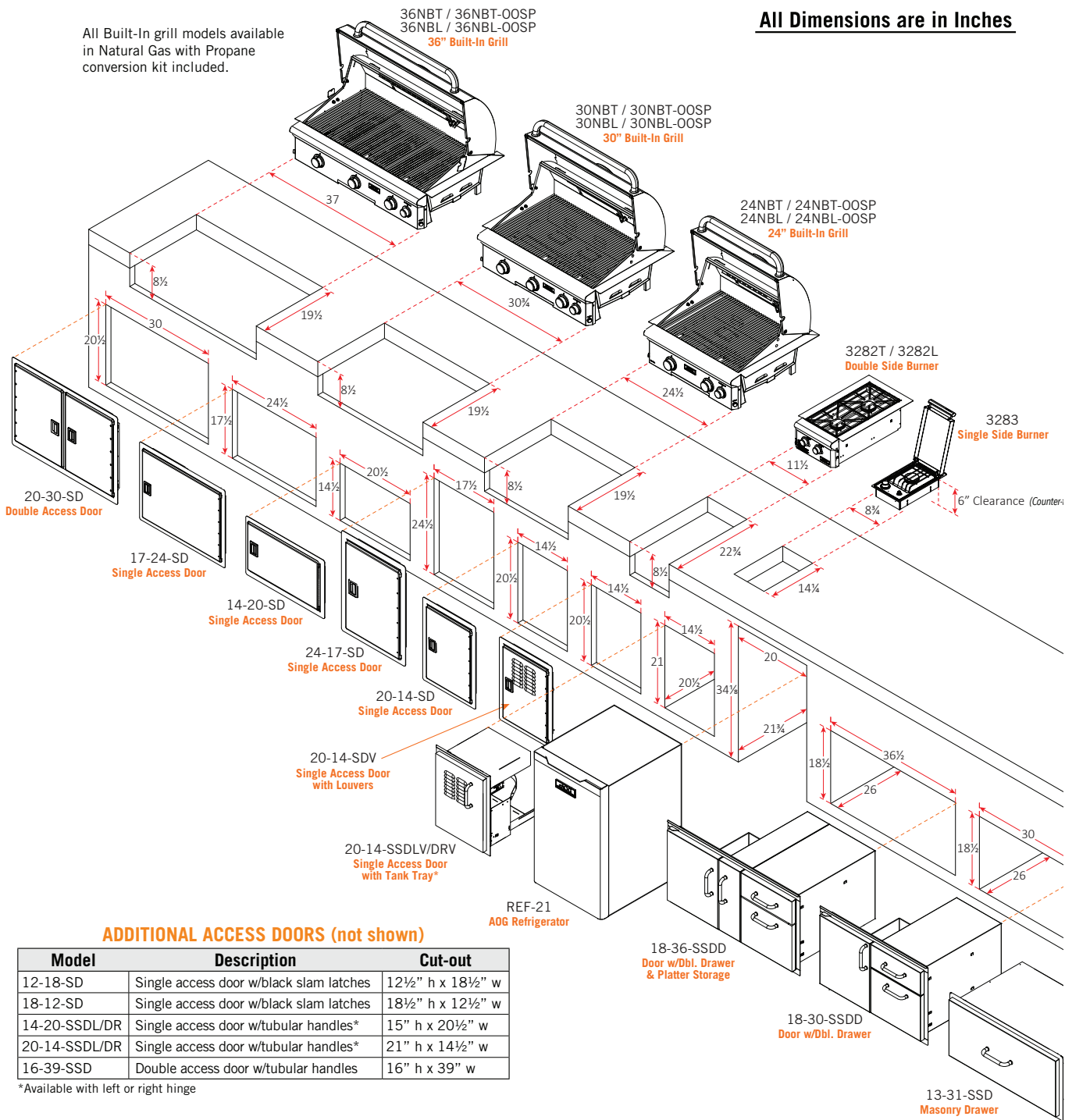


# CUT OUT DIMENSIONS

**All Dimensions are in Inches**

All Built-In grill models available in Natural Gas with Propane conversion kit included.

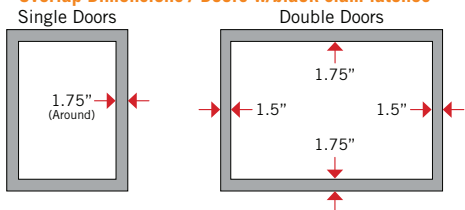


**ADDITIONAL ACCESS DOORS (not shown)**

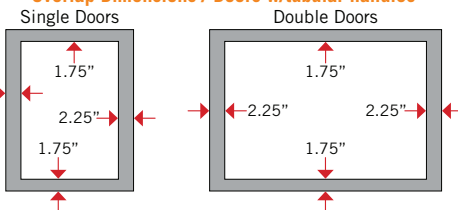
Model	Description	Cut-out
12-18-SD	Single access door w/black slam latches	12½" h x 18½" w
18-12-SD	Single access door w/black slam latches	18½" h x 12½" w
14-20-SSDL/DR	Single access door w/tubular handles*	15" h x 20½" w
20-14-SSDL/DR	Single access door w/tubular handles*	21" h x 14½" w
16-39-SSD	Double access door w/tubular handles	16" h x 39" w

\*Available with left or right hinge

**Overlap Dimensions / Doors w/black slam latches**



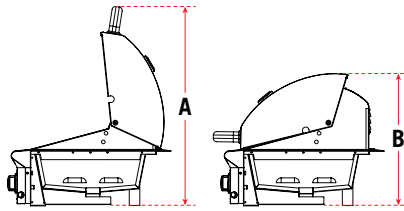
**Overlap Dimensions / Doors w/tubular handles**



16-15 Double

The information provided is for reference purposes only. Detailed instructions and specifications unique to the product purchased can be found in the Manufacturer's Owner's Manual.

# CUT OUT DIMENSIONS



### Built-In Grills Height Dimensions

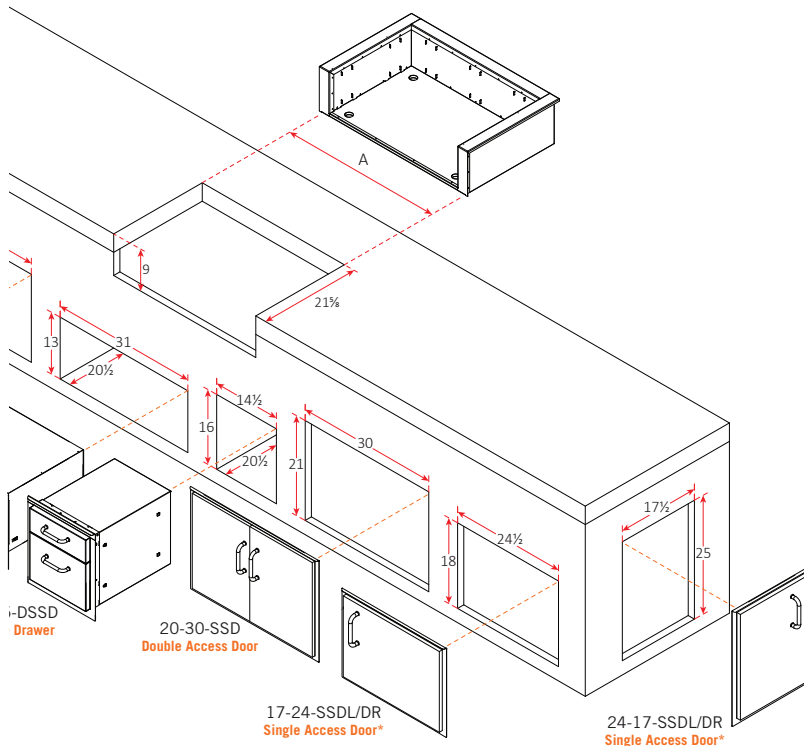
Description	Hood Open (A)	Hood Closed (B)
24NBT/24NBL	30½"	20"
30NBT/30NBL	30½"	20"
36NBT/36NBL	30½"	20"

top to unit bottom)

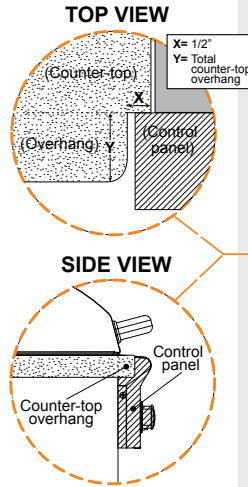
### Grill Insulating Liners

(must be used when installing in a combustible island)

Model	Description	"A" Cut-out
24-IL-C	24" Grill Insulating Liner	28¾"
30-IL-C	30" Grill Insulating Liner	34¾"
36-IL-C	36" Grill Insulating Liner	40¾"

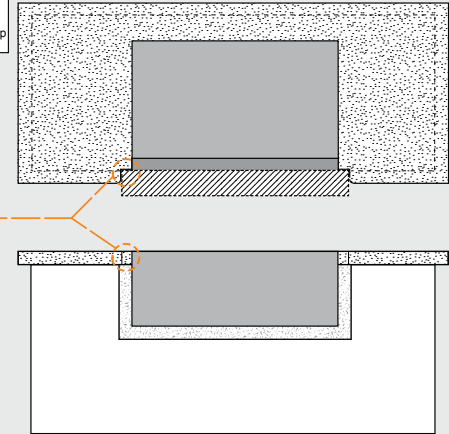


\* Available with left or right hinge



### ISLAND COUNTER-TOP OVERHANG

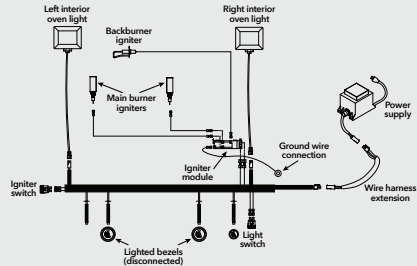
The control panel is designed to sit flush against the enclosure front wall. If the enclosure counter-top extends beyond the front wall, creating a counter-top overhang, it must be cut flush with the front wall for the width of the control panel or a gap will be created exposing the forward portions of the left and right side grill fire walls. See illustrations below.



### "L" SERIES ELECTRICAL SPECIFICATIONS

- "L" Series grills require 120VAC (5 AMP min.) power to operate
- Power supply rating - 120VAC / 0.3A / 60 Hz
- Oven lights rating - 12V / 10 watt halogen bulb

### "L" SERIES BUILT-IN GRILL WIRING DIAGRAM \*



\*24" model shown. Model wire diagrams vary between models, a wire diagram specific to each unit can be found affixed to the inside of the control panel.

### OUTDOOR KITCHEN CONSIDERATIONS

- Carefully consider grill size & accessories needed
- Combustible construction requires insulating liner
- Select Natural or Propane (LP gas)
- Determine total gas consumption for supply line size
- Access required to gas connections and shut off valve
- Plan location of propane tank away from grill and appliances
- Always refer to the installation and operating instructions of your American Outdoor Grill® and/or accessories for installation guidelines & safety warnings before starting your project
- Always check all gas connections for leaks
- Provide ventilation in island for gas vapors. Allow at least four ventilation openings (two at floor level and two 16" above floor 10 in<sup>2</sup> each) at opposing ends/sides

### LOCATION

- Identify outdoor area where grill will be installed
- Determine the utilities needed (gas, water, electricity, drainage, etc.)
- Consider element exposure (sun, wind direction, weather, etc.)

### MATERIALS

- Foundation - concrete
- Base - brick, stone, stucco, concrete
- Counter top - tile, granite, marble, concrete

The information provided is for reference purposes only. Detailed instructions and specifications unique to the product purchased can be found in the Manufacturer's Owner's Manual.