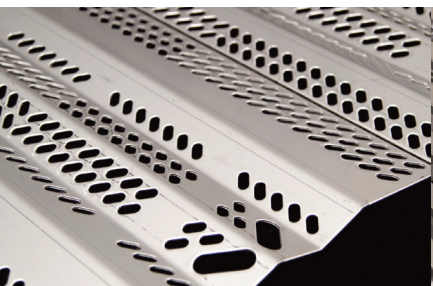
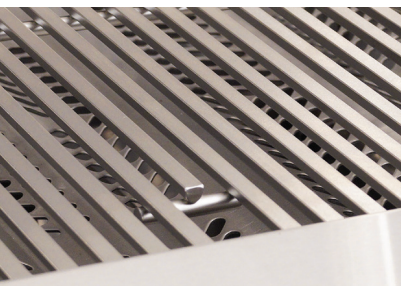




If Looks Could Grill



VAPORIZER PANELS



DIAMOND SEAR COOKING GRIDS*

*U.S. Pat. No. D857,453 & D862,984



HEAVY DUTY WARMING RACK



LIFETIME BURNERS

American Outdoor Grills are beautifully designed to be the showpiece of any backyard kitchen, thoughtfully engineered with features to enhance the flavor of grilled cuisine and durably built to be enjoyed for years to come.



“L” Series Grills

- Electronic Push Button Ignition
- Requires 120 Volt AC Power
- Stainless Steel Vaporizer Panels for Even Heat Distribution
- Analog Thermometer with an Angled Bezel
- Back-Lit Knobs
- Diamond Sear Cooking Grids
- Halogen Interior Lights
- Heavy Duty 304 Series Stainless Steel Construction
- Heavy Duty Warming Rack on all Units
- Seamless Hood and Control Panel with Brushed Edges

Model No.	Description	List Price
-----------	-------------	------------

“L” Series - Built-In Grills

36NBL	36" NG Built In Grill - 36x18 (648 sq. in.), 50,000 Btu's, Rear Rotisserie (12,000 Btu's)	\$3,640.00
36NBL-00SP	36" NG Built In Grill - 36x18 (648 sq. in.), 50,000 Btu's	\$3,349.00
30NBL	30" NG Built In Grill - 30x18 (540 sq. in.), 45,000 Btu's, Rear Rotisserie (12,000 Btu's)	\$3,424.00
30NBL-00SP	30" NG Built In Grill - 30x18 (540 sq. in.), 45,000 Btu's	\$3,131.00
24NBL ❖	24" NG Built In Grill - 24x18 (432 sq. in.), 32,000 Btu's, Rear Rotisserie (10,000 Btu's)	\$2,988.00
24NBL-00SP ❖	24" NG Built In Grill - 24x18 (432 sq. in.), 32,000 Btu's	\$2,696.00

Note: All Built In Grills are NG and come with LP orifices.

“L” Series - Portable Grills

36PCL ❖	36" LP Portable Grill - 36x18 (648 sq. in.), 50,000 Btu's, Side Burner (12,000 Btu's), Rear Rotisserie (12,000 Btu's)	\$5,175.00
36PCL-00SP ❖	36" LP Portable Grill - 36x18 (648 sq. in.), 50,000 Btu's	\$4,744.00
30PCL ❖	30" LP Portable Grill - 30x18 (540 sq. in.), 45,000 Btu's, Side Burner (12,000 Btu's), Rear Rotisserie (12,000 Btu's)	\$4,901.00
30PCL-00SP ❖	30" LP Portable Grill - 30x18 (540 sq. in.), 45,000 Btu's	\$4,470.00
24PCL ❖	24" LP Portable Grill - 24x18 (432 sq. in.), 32,000 Btu's, Side Burner (12,000 Btu's), Rear Rotisserie (10,000 Btu's)	\$4,115.00
24PCL-00SP ❖	24" LP Portable Grill - 24x18 (432 sq. in.), 32,000 Btu's	\$3,796.00

Note: All Portable Grills Come LP and you must purchase a NG Conversion Kit for NG, CK-41-NAT or CK-42-NAT plus orifice kit.

“L” Series - In Ground Post / Patio Post Grills

24NGL ❖	24" NG Grill with In-Ground Post - 24x18 (432 sq. in.), 32,000 Btu's, Rear Rotisserie (10,000 Btu's)	\$3,828.00
24NGL-00SP ❖	24" NG Grill with In-Ground Post - 24x18 (432 sq. in.), 32,000 Btu's	\$3,536.00
24NPL ❖	24" NG Grill with Patio Post - 24x18 (432 sq. in.), 32,000 Btu's, Rear Rotisserie (10,000 Btu's)	\$3,928.00
24NPL-00SP ❖	24" NG Grill with Patio Post - 24x18 (432 sq. in.), 32,000 Btu's	\$3,636.00

Note: All In Ground Post/Patio Post Grills are NG and come with LP orifices. Comes with gas-conserving 1-hour timer and the base has been upgraded to stainless steel.



36NBL



30NBL



24NBL

Pricing, model numbers and availability are subject to change without notice.

❖ - Non-Stock, Special Order - NO RETURNS or CANCELLATIONS



"T" Series Grills

- Piezo "Rapid Light" Ignition
- Heavy Duty 304 Series Stainless Steel Construction
- Heavy Duty Warming Rack on all Units
- Analog Thermometer with an Angled Bezel
- Requires No Batteries or Electricity
- Diamond Sear Cooking Grids
- Stainless Steel Vaporizer Panels for Even Heat Distribution
- Seamless Hood and Control Panel with Brushed Edges

Model No.	Description	List Price
-----------	-------------	------------

"T" Series - Built-In Grills

36NBT	36" NG Built In Grill - 36x18 (648 sq. in.), 50,000 Btu's, Rear Rotisserie (12,000 Btu's)	\$3,179.00
36NBT-00SP	36" NG Built In Grill - 36x18 (648 sq. in.), 50,000 Btu's	\$2,886.00
30NBT	30" NG Built In Grill - 30x18 (540 sq. in.), 45,000 Btu's, Rear Rotisserie (12,000 Btu's)	\$2,962.00
30NBT-00SP	30" NG Built In Grill - 30x18 (540 sq. in.), 45,000 Btu's	\$2,670.00
24NBT	24" NG Built In Grill - 24x18 (432 sq. in.), 32,000 Btu's, Rear Rotisserie (10,000 Btu's)	\$2,560.00
24NBT-00SP	24" NG Built In Grill - 24x18 (432 sq. in.), 32,000 Btu's	\$2,267.00

Note: All Built In Grills are NG and come with LP orifices.



36NBT-00SP



24NBT



30PCT



24NPT

"T" Series - Portable Grills

36PCT	36" LP Portable Grill - 36x18 (648 sq. in.), 50,000 Btu's, Side Burner (12,000 Btu's), Rear Rotisserie (12,000 Btu's)	\$4,714.00
36PCT-00SP	36" LP Portable Grill - 36x18 (648 sq. in.), 50,000 Btu's	\$4,282.00
30PCT	30" LP Portable Grill - 30x18 (540 sq. in.), 45,000 Btu's, Side Burner (12,000 Btu's), Rear Rotisserie (12,000 Btu's)	\$4,439.00
30PCT-00SP	30" LP Portable Grill - 30x18 (540 sq. in.), 45,000 Btu's	\$4,008.00
24PCT	24" LP Portable Grill - 24x18 (432 sq. in.), 32,000 Btu's, Side Burner (12,000 Btu's), Rear Rotisserie (10,000 Btu's)	\$3,687.00
24PCT-00SP ❖	24" LP Portable Grill - 24x18 (432 sq. in.), 32,000 Btu's	\$3,255.00

Note: All Portable Grills Come LP and you must purchase a NG Conversion Kit for NG, CK-41-NAT or CK-42-NAT plus orifice kit, see page 33.

"T" Series - In Ground Post / Patio Post Grills

24NGT ❖	24" NG Grill with In-Ground Post - 24x18 (432 sq. in.), 32,000 Btu's, Rear Rotisserie (10,000 Btu's)	\$3,400.00
24NGT-00SP	24" NG Grill with In-Ground Post - 24x18 (432 sq. in.), 32,000 Btu's	\$3,108.00
24NPT ❖	24" NG Grill with Patio Post - 24x18 (432 sq. in.), 32,000 Btu's, Rear Rotisserie (10,000 Btu's)	\$3,500.00
24NPT-00SP	24" NG Grill with Patio Post - 24x18 (432 sq. in.), 32,000 Btu's	\$3,208.00

Note: All In Ground Post/Patio Post Grills are NG and come with LP orifices. Comes with gas-conserving 1-hour timer and the base has been upgraded to stainless steel.

Pricing, model numbers and availability are subject to change without notice.

Grill Accessories

Model No. Description List Price

Storage Doors, Drawers and Refrigeration

14-20-SSDR	Single Access Door, Right Hinge - 14"H x 20"W	\$325.00
17-24-SSDR	Single Access Door, Right Hinge - 17"H x 24"W	\$373.00
20-14-SSDR ❖	Single Access Door, Right Hinge - 20"H x 14"W	\$328.00
20-30-SSD	Double Access Door - 20"H x 30"W	\$603.00
16-15-DSSD	Double Drawer	\$793.00
REF-21	4.0 Cu. Ft. Refrigerator Below Counter with Lock (reversible door hinge)	\$670.00



20-30-SSD

Side Burners and Liners

3283	NG Built In Single Side Burner 15,000 BTU's (LP orifices and SS Lid Included)	\$601.00
3282T	NG Built In Double Side Burner 25,000 BTU's (LP orifices and SS Lid Included) - "T" Series	\$1,330.00
3282L	NG Built In Double Side Burner 25,000 BTU's (LP orifices and SS Lid Included) - "L" Series	\$1,471.00
24-IL-C ❖	24" Insulating Liner - Fits 2018 Models & Newer	\$969.00
30-IL-C	30" Insulating Liner - Fits 2018 Models & Newer	\$1,022.00
36-IL-C	36" Insulating Liner - Fits 2018 Models & Newer	\$1,098.00



16-15-DSSD

Grill Covers

CB36-D	36" Built In Grill Cover	\$91.00
CB30-D	30" Built In Grill Cover	\$85.00
CB24-D	24" Built In Grill Cover	\$79.00
CC36-D	36" Portable Grill Cover	\$164.00
CC30-D	30" Portable Grill Cover	\$149.00
CC24-D	24" Portable Grill Cover, In-Ground, Patio Post	\$122.00
CB2SB-D ❖	Double Side Burner Cover for 3282 (T/L)	\$134.00



REF-21



3282L



CB24-D

Pricing, model numbers and availability are subject to change without notice.

❖ - Non-Stock, Special Order - NO RETURNS or CANCELLATIONS



Grill Accessories & Replacement Parts

Model No. Description List Price

Conversion Kits

CK-41-NAT*	Portable Conversion Kit LP to NG. Includes reducer bushing, flare adaptor, regulator & 10' hose with quick disconnect	\$199.00
CK-42-NAT* ❖	Portable Conversion Kit LP to NG. Includes regulator & reducer bushing	\$60.00
CK-43-LP*	Portable Conversion Kit NG to LP. Includes regulator hose assembly & support ring assembly	\$117.00

*Must Order Orifice Kit to Complete Conversion

Grill Accessories

3574 ❖	Grill Light (for "T" Series Grills)	\$170.00
24-B-28 ❖	Bracket for Grill Light (required on non-backburner units)	\$18.00
GR18A	Stainless Steel Griddle (17"x12 1/5")	\$534.00
3561 ❖	Smoker Box	\$143.00
IRB-18	Infra-Red Burner System (for "L" Model Grills Only)	\$454.00
TH-PP-2 ❖	Tank Shield for Patio Post Grill	\$134.00
RK24 ❖	24" Rotisserie Kit	\$235.00
RK30 ❖	30" Rotisserie Kit	\$237.00
RK36 ❖	36" Rotisserie Kit	\$243.00
3092B	Fire Magic Automatic Timer Safety Shut-Off Valve - 1 Hour	\$102.00
5521-11T	1-Hour Stainless Steel Gas Timer Box	\$247.00

Common Replacement Parts

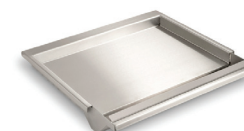
36-B-05-3	Vaporizing Panels, Set of 3, for 36" Grills	\$336.00
30-B-05-3	Vaporizing Panels, Set of 3, for 30" Grills	\$302.00
24-B-05-2	Vaporizing Panels, Set of 2, for 24" Grills	\$225.00
24-B-20	Valve Only, "L" Series and Pre 2015	\$78.00
24-B-06	Burner	\$177.00
24-B-04T	Main Burner Electrode / Ignitor Assembly ("T" Series)	\$55.00
24-B-04	Main Burner Electrode / Ignitor Assembly ("L" Series and Pre 2015)	\$55.00
24-B-46	Ignitor Switch, "L" Series	\$18.00
24-B-47	Power Supply, "L" Series	\$234.00
24-B-51T	Main Burner Valve, "T" Series	\$78.00
36-B-11	Cooking Grids, Set of 3, Pre-2018	\$412.00
24-B-03 ❖	Replacement Electrode, "L" Series, (Pre 2015)	\$85.00
24-B-19A ❖	Wire with Electrode, IR Burner	\$115.00
24-B-37L	Large Knob, "L" Series	\$33.00
24-B-37T ❖	Large Knob, "T" Series	\$33.00
24-B-45	Light Switch, "L" Series	\$18.00
24-B-49 ❖	Ignitor Module	\$40.00
23305	Analog Thermometer & Bezel	\$53.00
24187-15	Light Bulb, "L" Series	\$14.00
24187-26	Light Lens, "L" Series	\$33.00
24187-28	Lamp Assembly, "L" Series	\$68.00

* NG Orifice Kits

	"L" SERIES	"T" SERIES	LIST PRICE
24"	24-B-51 v	24-B-52	\$21.00
30"	30-B-51 v	30-B-52	\$28.00
36"	36-B-51 v	36-B-52	\$28.00

* LP Orifice Kits

	"L" SERIES	"T" SERIES	LIST PRICE
24"	24-B-51P v	24-B-52P	\$21.00
30"	30-B-51P v	30-B-52P	\$28.00
36"	36-B-51P v	36-B-52P	\$28.00



GR18A



IRB-18



3092B



5521-11T

Pricing, model numbers and availability are subject to change without notice.