

G19A Series - Burners and Logs

Certified vent free burner with pre-assembled Remote Control Valve and ODS Safety System. Glowing Embers and Lava Granules are included.

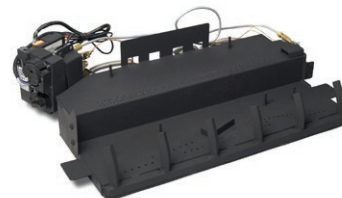
MODEL NUMBER	DESCRIPTION	LIST PRICE
Variable Remote Burners (-15)		
G19A-18/20-15N	18/20" Vent Free Variable Remote Burner, 31,000 btu - NG	\$1,539.00
G19A-18/20-15P	18/20" Vent Free Variable Remote Burner, 30,000 btu - LP	\$1,539.00
G19A-24/30-15N	24/30" Vent Free Variable Remote Burner, 40,000 btu - NG	\$1,619.00
G19A-24/30-15P	24/30" Vent Free Variable Remote Burner, 34,000 btu - LP	\$1,619.00

Electronic Remote Burners (-01)

G19A-18/20-01VN	18/20" Vent Free Electronic Remote Burner, 31,000 btu - NG	\$1,872.00
G19A-18/20-01VP	18/20" Vent Free Electronic Remote Burner, 30,000 btu - LP	\$1,872.00
G19A-24/30-01VN	24/30" Vent Free Electronic Remote Burner, 40,000 btu - NG	\$1,952.00
G19A-24/30-01VP	24/30" Vent Free Electronic Remote Burner, 34,000 btu - LP	\$1,952.00

G19A Series Gas Logs Only

FTO-18	18" Foothill Oak Logs Only	\$418.00
FTO-24	24" Foothill Oak Logs Only	\$471.00
FTO-30	30" Foothill Oak Logs Only	\$568.00
FTSO-18	18" Foothill Split Oak Logs Only	\$455.00
FTSO-24	24" Foothill Split Oak Logs Only	\$516.00
FTSO-30	30" Foothill Split Oak Logs Only	\$618.00



G19A



Foothill Oak



Foothill Split Oak

Minimum Fireplace Size			
Front Width	Rear Width	Depth	Height
G19A-18/20 (18") 24"	22"	14"	17"
G19A-24/30 (24") 30"	24"	14"	17"
G19A-24/30 (30") 34"	26"	14"	17"

SOME BRANDS ARE ONLY AVAILABLE IN SELECTED AREAS, SEE MAP ON PAGE 4 OR CONTACT YOUR REGIONAL SALES MANAGER FOR MORE INFO.

Pricing, model numbers and availability are subject to change without notice. Call for most current information.

G23 Series Burners and Fyre Spheres

new

Certified vent free burner with pre-assembled Control Valve and ODS Safety System. Removable Front Panel and Connector Kit.

MODEL NUMBER	DESCRIPTION	LIST PRICE
On/Off Remote Burner (-12)		
G23-18-12N	18" Vent Free Remote Burner, 28,000 btu - NG	\$,1396.00
G23-18-12P	18" Vent Free Remote Burner, 28,000 btu - LP	\$,1396.00
G23-24-12N	24" Vent Free Remote Burner, 37,000 btu - NG	\$1,516.00
G23-24-12P	24" Vent Free Remote Burner, 37,000 btu - LP	\$1,516.00

Electronic Remote Burners (-01)

G23-18-01VN	18" Vent Free Electronic Remote Burner, 28,000 btu - NG	\$1,875.00
G23-18-01VP	18" Vent Free Electronic Remote Burner, 28,000 btu - LP	\$1,875.00
G23-24-01VN	24" Vent Free Electronic Remote Burner, 37,000 btu - NG	\$1,995.00
G23-24-01VP	24" Vent Free Electronic Remote Burner, 37,000 btu - LP	\$1,995.00

G23 Series Fyre Spheres

US4-18-CM	4" Carrera Marble Fyre Spheres for G23 18" Burner	\$384.00
US4-24-CM	4" Carrera Marble Fyre Spheres for G23 24" Burner	\$528.00
US4-18-EB	4" Epic Black Fyre Spheres for G23 18" Burner	\$241.00
US4-24-EB	4" Epic Black Fyre Spheres for G23 24" Burner	\$330.00
US4-18-GS	4" Gray Stone Fyre Spheres for G23 18" Burner	\$216.00
US4-24-GS	4" Gray Stone Fyre Spheres for G23 24" Burner	\$298.00



G23-24 Spheres Burner

Minimum Fireplace Size

	Front Width	Rear Width	Depth	Height
G23-18	24"	20"	15"	17"
G23-24	30"	22"	16"	17"



Carrera Marble Fyre Spheres

SOME BRANDS ARE ONLY AVAILABLE IN SELECTED AREAS, SEE MAP ON PAGE 4 OR CONTACT YOUR REGIONAL SALES MANAGER FOR MORE INFO.

Pricing, model numbers and availability are subject to change without notice. Call for most current information.

❖ – Non Stock Special Order - NO RETURNS or CANCELLATIONS

RMI Ph: 800-628-5044

raymurray.com

G18 Series - Burners and Logs

Certified vent free burner with pre-assembled Control Valve and ODS Safety System, Glowing Embers, Bryte Coals, Lava-Fyre Granules, Wood chunks included.

MODEL NUMBER	DESCRIPTION	LIST PRICE
Manual Burner		
G18-16/18N ❖	16/18" Vent Free Manual Burner - NG	\$1,025.00
G18-24/30N	24/30" Vent Free Manual Burner, 38,000 btu - NG	\$1,148.00



G18

Variable Remote Burners (-15)

G18-16/18-15N	16/18" Vent Free Variable Remote Burner, 30,000 btu - NG	\$1,526.00
G18-16/18-15P	16/18" Vent Free Variable Remote Burner, 30,000 btu - LP	\$1,526.00
G18-24/30-15N	24/30" Vent Free Variable Remote Burner, 38,000 btu - NG	\$1,650.00
G18-24/30-15P	24/30" Vent Free Variable Remote Burner, 38,000 btu - LP	\$1,650.00



ECV
Evening Fyre Charred

Electronic Remote Burners (-01)

G18-16/18-01VN	16/18" Vent Free Electric Remote Burner, 30,000 btu - NG	\$1,862.00
G18-16/18-01VP	16/18" Vent Free Electric Remote Burner, 30,000 btu - LP	\$1,862.00
G18-24/30-01VN	24/30" Vent Free Electric Remote Burner, 38,000 btu - NG	\$1,986.00
G18-24/30-01VP	24/30" Vent Free Electric Remote Burner, 38,000 btu - LP	\$1,986.00



EFV
Evening Fyre

G18 Series Gas Logs Only

ECV-16/18	16/18" Evening Fyre Charred Vent Free Logs Only	\$457.00
ECV-24	24" Evening Fyre Charred Vent Free Logs Only	\$522.00
ECV-30	30" Evening Fyre Charred Vent Free Logs Only	\$623.00
EFV-16/18	16/18" Evening Fyre Vent Free Logs Only	\$407.00
EFV-24	24" Evening Fyre Vent Free Logs Only	\$463.00
EFV-30	30" Evening Fyre Vent Free Logs Only	\$561.00
ESV-16/18	16/18" Evening Fyre Split Vent Free Logs Only	\$447.00
ESV-24	24" Evening Fyre Split Vent Free Logs Only	\$510.00
ESV-30	30" Evening Fyre Split Vent Free Logs Only	\$605.00



ESV
Evening Fyre Split

	Minimum Fireplace Size			
	Front Width	Rear Width	Depth	Height
G18-16/18 (16/18")	24"	20"	14"	17"
G18-24/30 (24")	30"	24"	14"	17"
G18-24/30 (30")	36"	26"	14"	17"

SOME BRANDS ARE ONLY AVAILABLE IN SELECTED AREAS, SEE MAP ON PAGE 4 OR CONTACT YOUR REGIONAL SALES MANAGER FOR MORE INFO.

Pricing, model numbers and availability are subject to change without notice. Call for most current information.

G10 Series - Burners and Logs

Certified vent free burner with pre-assembled Control Valve and ODS Safety System, Glowing Embers, Bryte Coals, Lava-Fyre Granules included.

MODEL NUMBER	DESCRIPTION	LIST PRICE
Manual Burners		
G10-16/18N	16/18" Vent Free Manual Burner, 35,000 btu - NG	\$903.00
G10-16/18P	16/18" Vent Free Manual Burner, 35,000 btu - LP	\$903.00
G10-24/30N	24/30" Vent Free Manual Burner, 37,000 btu - NG	\$1,009.00
G10-24/30P	24/30" Vent Free Manual Burner, 37,000 btu - LP	\$1,009.00

Variable Remote Burners (-15)

G10-16/18-15N	16/18" Vent Free Variable Remote Burner, 35,000 btu - NG	\$1,386.00
G10-16/18-15P	16/18" Vent Free Variable Remote Burner, 35,000 btu - LP	\$1,386.00
G10-24/30-15N	24" Vent Free Variable Remote Burner, 37,000 btu - NG	\$1,492.00
G10-24/30-15P	24" Vent Free Variable Remote Burner, 37,000 btu - LP	\$1,492.00

NOTE: G10 ON/OFF REMOTE BURNERS WITHOUT REMOTE LISTED ON NEXT PAGE.

Electronic Remote Burners (-01)

G10-16/18-01VN	16/18" Vent Free Electronic Remote Burner, 35,000 btu - NG	\$1,761.00
G10-16/18-01VP	16/18" Vent Free Electronic Remote Burner, 35,000 btu - LP	\$1,761.00
G10-24/30-01VN	24/30" Vent Free Electronic Remote Burner, 37,000 btu - NG	\$1,867.00
G10-24/30-01VP	24/30" Vent Free Electronic Remote Burner, 37,000 btu - LP	\$1,867.00



G10 - Burner



15 Valve

Minimum Fireplace Size

	Front Width	Rear Width	Depth	Height
G10-16/18 (16/18")	22"	20"	13"	17"
G10-24/30 (24")	28"	20"	14"	17"
G10-24/30 (30")	34"	20"	14"	17"

Continued on next page

G10 Series - Burners and Logs Cont.

MODEL NUMBER	DESCRIPTION	LIST PRICE
Charred Frontier Oak		
CHFR-16/18	16/18" Charred Frontier Oak Refractory Vent Free Logs Only	\$382.00
CHFR-24	24" Charred Frontier Oak Refractory Vent Free Logs Only	\$436.00
CHFR-30	30" Charred Frontier Oak Refractory Vent Free Logs Only	\$542.00
Charred Aged Split		
CHAS-16/18	16/18" Charred Aged Split Refractory Vent Free Logs Only	\$419.00
CHAS-24	24" Charred Aged Split Refractory Vent Free Logs Only	\$482.00
CHAS-30	30" Charred Aged Split Refractory Vent Free Logs Only	\$592.00
Charred Alpine Birch		
CHAB-16/18	16/18" Charred Alpine Birch Refractory Vent Free Logs Only	\$490.00
CHAB-24	24" Charred Alpine Birch Refractory Vent Free Logs Only	\$552.00
CHAB-30	30" Charred Alpine Birch Refractory Vent Free Logs Only	\$656.00
Charred Gnarled Split		
CHGS-16/18	16/18" Charred Gnarled Split Vent Free Log Only	\$506.00
CHGS-24	24" Charred Gnarled Split Vent Free Log Only	\$575.00
CHGS-30	30" Charred Gnarled Split Vent Free Log Only	\$683.00
Gnarled Oak		
GNO-16/18	16/18" Gnarled Oak Vent Free Log Only	\$473.00
GNO-24	24" Gnarled Oak Vent Free Log Only	\$533.00
GNO-30	30" Gnarled Oak Vent Free Log Only	\$632.00



CHFR
Charred Frontier Oak



CHAS
Charred Aged Split



CHAB Charred
Alpine Birch



CHGS
Charred Gnarled Split



GNO
Gnarled Oak

SOME BRANDS ARE ONLY AVAILABLE IN SELECTED AREAS, SEE MAP ON PAGE 4 OR CONTACT YOUR REGIONAL SALES MANAGER FOR MORE INFO.

Pricing, model numbers and availability are subject to change without notice. Call for most current information.

G9 Series - Burners and Logs

Certified vent free burner with pre-assembled Control Valve and ODS Safety System, Glowing Embers, Bryte Coals, Lava-Fyre Granules included.

MODEL NUMBER	DESCRIPTION	LIST PRICE
Manual Burner		
G9-20/24/30N	20/24/30" Vent Free Manual Burner, 36,000 btu - NG	\$720.00
G9-20/24/30P	20/24/30" Vent Free Manual Burner, 36,000 btu - LP	\$720.00

On/Off Remote Burners (-12)

G9-20/24/30-12N	20/24/30" Vent Free Remote Burner, 36,000 btu - NG	\$1,104.00
G9-20/24/30-12P	20/24/30" Vent Free Remote Burner, 36,000 btu - LP	\$1,104.00

Variable Remote Burners (-15)

G9-20/24/30-15N	20/24/30" Vent Free Variable Remote Burner, 36,000 btu - NG	\$1,223.00
G9-20/24/30-15P	20/24/30" Vent Free Variable Remote Burner, 36,000 btu - LP	\$1,223.00

G9 Series Gas Logs Only

RD9-20	20" Golden Oak Designer Vent Free Logs	\$306.00
RD9-24	24" Golden Oak Designer Vent Free Logs	\$332.00
RD9-30	30" Golden Oak Designer Vent Free Logs	\$417.00
S9-20	20" Split Oak Vent Free Logs	\$330.00
S9-24	24" Split Oak Vent Free Logs	\$360.00
S9-30	30" Split Oak Vent Free Logs	\$450.00
M9-20	20" Meadow Oak Vent Free Logs	\$317.00
M9-24	24" Meadow Oak Vent Free Logs	\$343.00
M9-30	30" Meadow Oak Vent Free Logs	\$428.00



G9 - Burner



RD9 - Golden Oak



S9 - Split Oak



M9 - Meadow Oak

	Minimum Fireplace Size			
	Front Width	Rear Width	Depth	Height
G9-20/24/30 (20")	28"	24"	14"	17"
G9-20/24/30 (24")	32"	24"	14"	17"
G9-20/24/30 (30")	36"	28"	14"	17"

SOME BRANDS ARE ONLY AVAILABLE IN SELECTED AREAS, SEE MAP ON PAGE 4 OR CONTACT YOUR REGIONAL SALES MANAGER FOR MORE INFO.

Pricing, model numbers and availability are subject to change without notice. Call for most current information.

❖ – Non Stock Special Order - NO RETURNS or CANCELLATIONS

RMI Ph: 800-628-5044

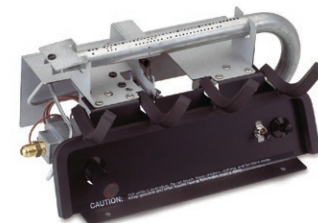
raymurray.com

235

G8E Series - Burners and Logs

Certified vent free burner with pre-assembled Control Valve and ODS Safety System, Decorative Front Panel Included.

MODEL NUMBER	DESCRIPTION	LIST PRICE
Manual Burner		
G8E-16/20/24N	16/20/24" Vent Free Manual Burner - 20,000 btu - NG	\$516.00
G8E-16/20/24P	16/20/24" Vent Free Manual Burner - 20,000 btu - LP	\$516.00



G8E - Burner

On/Off Remote Burners

G8E-16/20/24-12N	16/20/24" Vent Free Remote Burner - 20,000 btu - NG	\$894.00
G8E-16/20/24-12P	16/20/24" Vent Free Remote Burner - 20,000 btu - LP	\$894.00
G8E-16/20/24R-12N	16/20/24" Vent Free Remote Burner - 9,500 btu - NG	\$894.00
G8E-16/20/24R-12P	16/20/24" Vent Free Remote Burner - 9,500 btu - LP	\$894.00



V08 - Valley Oak

Variable Remote Burner (-15)

G8E-16/20/24-15N	16/20/24" Vent Free Variable Remote Burner - 20,000 btu - NG	\$979.00
G8E-16/20/24-15P	16/20/24" Vent Free Variable Remote Burner - 20,000 btu - LP	\$979.00



SV08 - Split Valley Oak

G8 Series Gas Logs Only

VO8E-16	16" Valley Oak Vent Free Logs Only	\$304.00
VO8E-20	20" Valley Oak Vent Free Logs Only	\$345.00
VO8E-24	24" Valley Oak Vent Free Logs Only	\$384.00
SVO8E-16	16" Split Valley Oak Vent Free Logs Only	\$326.00
SVO8E-20	20" Split Valley Oak Vent Free Logs Only	\$367.00
SVO8E-24	24" Split Valley Oak Vent Free Logs Only	\$406.00

Minimum Fireplace Size

	Front Width	Rear Width	Depth	Height
G8E-16/20/24 (16")	17"	13"	9 1/2"	17"
G8E-16/20/24 (20")	21"	13"	9 1/2"	17"
G8E-16/20/24 (24")	26"	13"	9 1/2"	17"

SOME BRANDS ARE ONLY AVAILABLE IN SELECTED AREAS, SEE MAP ON PAGE 4 OR CONTACT YOUR REGIONAL SALES MANAGER FOR MORE INFO.

Pricing, model numbers and availability are subject to change without notice. Call for most current information.

G21 Vent Free Glass Burners - ANSI Certified

Features:

- This all 304 stainless steel burner burns cleanly with glass/gems directly on the burner ports, providing a sea of flames. Only 10 1/2" front-to-back, the mirrored front and back panels create a high and deep flame appearance. With its sleek lines, wide variety of choices for accessorizing, and a striking polished mirror finish, the G21 is the perfect addition to any contemporary hearth.

MODEL NUMBER	DESCRIPTION	LIST PRICE
G21-GL-18-12N	18" Glass Burner w/ On/Off Remote and Connector Kit, 30,000 btu - NG	\$1,530.00
G21-GL-18-12P	18" Glass Burner w/ On/Off Remote and Connector Kit, 27,000 btu - LP	\$1,530.00
G21-GL-24-12N	24" Glass Burner w/ On/Off Remote and Connector Kit, 35,000 btu - NG	\$1,650.00
G21-GL-24-12P	24" Glass Burner w/ On/Off Remote and Connector Kit, 30,000 btu - LP	\$1,650.00
G21-GL-30-12N	30" Glass Burner w/ On/Off Remote and Connector Kit, 40,000 btu - NG	\$1,720.00
G21-GL-30-12P	30" Glass Burner w/ On/Off Remote and Connector Kit, 35,000 btu - LP	\$1,720.00

NOTE:

- 18" BURNER TAKES 7 1/2 LBS OF GLASS
- 24" BURNER TAKES 10 LBS OF GLASS
- 30" BURNER TAKES 15 LBS OF GLASS



G21-GL



G21-GL

Features:

- 304 Stainless Steel
- Polished Mirror Finish

	Minimum Fireplace Size			
	Front Width	Rear Width	Depth	Height
G21-GL-18	22"	16"	13"	17"
G21-GL-24	28"	21"	13"	17"
G21-GL-30	34"	28"	13"	17"

Glass Media

MODEL NUMBER	DESCRIPTION	LIST PRICE
Fyre Glass - 10# Bag		
GL-10-F	Azuria Glass 10# Bag	\$104.00
GL-10-B	Black Glass 10# Bag	\$104.00
GL-10-Z	Bronze Glass 10# Bag	\$104.00
GL-10-N	Caribbean Blue Glass 10# Bag	\$104.00
GL-10-C	Clear Glass 10# Bag	\$104.00
GL-10-E ❖	Emerald Glass 10# Bag	\$104.00
GL-10-W	Star Fyre Glass 10# Bag	\$104.00

Reflective Fyre Glass - 10# Bag

GL-10-FR	Azuria Reflective Glass 10# Bag	\$115.00
GL-10-BR	Black Reflective Glass 10# Bag	\$115.00
GL-10-ZR	Bronze Reflective Glass 10# Bag	\$115.00
GL-10-NR	Caribbean Reflective Glass 10# Bag	\$115.00
GL-10-QR	Copper Reflective Glass 10# Bag	\$115.00
GL-10-ER	Emerald Reflective Glass 10# Bag	\$115.00
GL-10-HR	Gold Reflective Glass 10# Bag	\$115.00
GL-10-CR	Champagne Reflective Glass 10# Bag	\$115.00

Fyre Gems - 10# Bag

GLG-10-J	Black Pearl Gems 10# Bag	\$88.00
GLG-10-T	Blue Topaz Gems 10# Bag	\$88.00
GLG-10-D	Champagne Gems 10# Bag	\$88.00
GLG-10-A	Deep Amber Gems 10# Bag	\$88.00
GLG-10-C	Glacier Gems 10# Bag	\$88.00
GLG-10-S	Sapphire Gems 10# Bag	\$88.00

Fyre Glass - 40# Bag

GL-40-B	Black Glass 40# Bag	\$418.00
GL-40-Z	Bronze Glass 40# Bag	\$418.00
GL-40-N ❖	Caribbean Blue Glass 40# Bag	\$418.00
GL-40-C	Clear Glass 40# Bag	\$418.00
GL-40-W	Star Fyre Glass 40# Bag	\$418.00

Reflective Fyre Glass - 40# Bucket

GL-40-BR	Black Reflective Glass 40# Bucket	\$456.00
GL-40-ZR	Bronze Reflective Glass 40# Bucket	\$456.00
GL-40-QR	Copper Reflective Glass 40# Bucket	\$456.00
GL-40-HR	Gold Reflective Glass 40# Bucket	\$456.00
GL-40-CR	Champagne Reflective Glass 40# Bucket	\$456.00



Black Reflective Glass



Caribbean Blue Glass



Glacier Gems

SOME BRANDS ARE ONLY AVAILABLE IN SELECTED AREAS, SEE MAP ON PAGE 4 OR CONTACT YOUR REGIONAL SALES MANAGER FOR MORE INFO.

Pricing, model numbers and availability are subject to change without notice. Call for most current information.

Accessories for Vent Free Log Sets

MODEL NUMBER	DESCRIPTION	LIST PRICE
Remote Compatible Options		
RR-1A	Basic On/Off Receiver/Transmitter Set	\$124.00
RR-2A	Deluxe On/Off Receiver/Transmitter Set	\$181.00
VR-1A	Basic Variable Receiver/Transmitter Set for "15" Models	\$150.00
VR-2A	Deluxe Variable Receiver/Transmitter Set for "15" Models	\$206.00
WCDC-1	Wood Chunk Decorative Cover	\$54.00
PCDC-1	Pine Cone Decorative Cover	\$58.00
WCBC-1	Charred Birch Decorative Cover	\$64.00
WCAB-1	Charred Birch Decorative Wood Chunk	\$64.00
WS-1	Wall Switch, Cover and Wiring for "12" product only	\$72.00
WS-2	Wall Timer, Cover and Wiring for "12" product only	\$176.00
WS-3	Wall Switch, Cover and Wiring for "15" product only	\$88.00
RF-BTSR1-G	On/Off Bluetooth Control w/Golden Oak Cover for "12" product only	\$240.00
RF-BTSR1-B	On/Off Bluetooth Control w/White Birch Cover for "12" product only	\$246.00



RR - 1A



VR - 1A



DP - 2

Accessories

WC-6	6 Wood Chips	\$67.50
WCH-6	6 Charred Wood Chips	\$74.00
DP-2	Valley Oak Wood Chips and Pine Cones	\$76.33
LF-5	Lava Fyre Granules - 5#	\$26.00
PC-4	4 Designer Pine Cones	\$56.33
AC-6	6 Acorns	\$47.83
EMV-1	Platinum Embers	\$24.00



Bluetooth Control



Bluetooth Control with Cover

Oxygen Depletion Sensors/Replacement Embers

ODS-0001	Oxygen Depletion Sensor - NG	\$71.00
ODS-0002	Oxygen Depletion Sensor - LP	\$71.00
ODS-0003	Oxygen Depletion Sensor for 12" Valve - NG	\$138.00
ODS-0004	Oxygen Depletion Sensor for 12" Valve - LP	\$138.00
P-EM-10	Replacement Embers (G10, G18, G19A)	\$24.00

SOME BRANDS ARE ONLY AVAILABLE IN SELECTED AREAS, SEE MAP ON PAGE 4 OR CONTACT YOUR REGIONAL SALES MANAGER FOR MORE INFO.

Pricing, model numbers and availability are subject to change without notice. Call for most current information.

❖ – Non Stock Special Order - NO RETURNS or CANCELLATIONS

RMI Ph: 800-628-5044

raymurray.com

239