

## "L" Series Grills

- Electronic Push Button Ignition
- Requires 120 Volt AC Power
- Stainless Steel Vaporizer Panels for Even Heat Distribution
- Analog Thermometer with an Angled Bezel
- Back-Lit Knobs
- Diamond Sear Cooking Grids
- Halogen Interior Lights
- Heavy Duty 304 Series Stainless Steel Construction
- Heavy Duty Warming Rack on all Units
- Seamless Hood and Control Panel with Brushed Edges

Model No.	Description	List Price
-----------	-------------	------------

### "L" Series - Built-In Grills

36NBL	36" NG Built In Grill - 36x18 (648 sq. in.), 50,000 Btu's, Rear Rotisserie (12,000 Btu's)	\$4,084.00
36NBL-00SP	36" NG Built In Grill - 36x18 (648 sq. in.), 50,000 Btu's	\$3,758.00
30NBL	30" NG Built In Grill - 30x18 (540 sq. in.), 45,000 Btu's, Rear Rotisserie (12,000 Btu's)	\$3,842.00
30NBL-00SP	30" NG Built In Grill - 30x18 (540 sq. in.), 45,000 Btu's	\$3,513.00
24NBL ❖	24" NG Built In Grill - 24x18 (432 sq. in.), 32,000 Btu's, Rear Rotisserie (10,000 Btu's)	\$3,353.00
24NBL-00SP ❖	24" NG Built In Grill - 24x18 (432 sq. in.), 32,000 Btu's	\$3,025.00

Note: All Built In Grills are NG and come with LP orifices.

### "L" Series - Portable Grills

36PCL ❖	36" LP Portable Grill - 36x18 (648 sq. in.), 50,000 Btu's, Side Burner (12,000 Btu's), Rear Rotisserie (12,000 Btu's)	\$5,807.00
36PCL-00SP ❖	36" LP Portable Grill - 36x18 (648 sq. in.), 50,000 Btu's	\$5,323.00
30PCL ❖	30" LP Portable Grill - 30x18 (540 sq. in.), 45,000 Btu's, Side Burner (12,000 Btu's), Rear Rotisserie (12,000 Btu's)	\$5,500.00
30PCL-00SP ❖	30" LP Portable Grill - 30x18 (540 sq. in.), 45,000 Btu's	\$5,016.00
24PCL ❖	24" LP Portable Grill - 24x18 (432 sq. in.), 32,000 Btu's, Side Burner (12,000 Btu's), Rear Rotisserie (10,000 Btu's)	\$4,618.00
24PCL-00SP ❖	24" LP Portable Grill - 24x18 (432 sq. in.), 32,000 Btu's	\$4,259.00

Note: All Portable Grills Come LP and you must purchase a NG Conversion Kit for NG, CK-41-NAT or CK-42-NAT plus orifice kit.

### "L" Series - In Ground Post / Patio Post Grills

24NGL ❖	24" NG Grill with In-Ground Post - 24x18 (432 sq. in.), 32,000 Btu's, Rear Rotisserie (10,000 Btu's)	\$4,296.00
24NGL-00SP ❖	24" NG Grill with In-Ground Post - 24x18 (432 sq. in.), 32,000 Btu's	\$3,968.00
24NPL ❖	24" NG Grill with Patio Post - 24x18 (432 sq. in.), 32,000 Btu's, Rear Rotisserie (10,000 Btu's)	\$4,408.00
24NPL-00SP ❖	24" NG Grill with Patio Post - 24x18 (432 sq. in.), 32,000 Btu's	\$4,080.00

Note: All In Ground Post/Patio Post Grills are NG and come with LP orifices. Comes with gas-conserving 1-hour timer and the base has been upgraded to stainless steel.



36NBL



30NBL



24NBL



Prices reflect 10/1/25 pricing.

## "T" Series Grills

- Piezo "Rapid Light" Ignition
- Heavy Duty 304 Series Stainless Steel Construction
- Heavy Duty Warming Rack on all Units
- Analog Thermometer with an Angled Bezel
- Requires No Batteries or Electricity
- Diamond Sear Cooking Grids
- Stainless Steel Vaporizer Panels for Even Heat Distribution
- Seamless Hood and Control Panel with Brushed Edges

Model No.	Description	List Price
-----------	-------------	------------

### "T" Series - Built-In Grills

36NBT	36" NG Built In Grill - 36x18 (648 sq. in.), 50,000 Btu's, Rear Rotisserie (12,000 Btu's)	\$3,567.00
36NBT-00SP	36" NG Built In Grill - 36x18 (648 sq. in.), 50,000 Btu's	\$3,238.00
30NBT	30" NG Built In Grill - 30x18 (540 sq. in.), 45,000 Btu's, Rear Rotisserie (12,000 Btu's)	\$3,324.00
30NBT-00SP	30" NG Built In Grill - 30x18 (540 sq. in.), 45,000 Btu's	\$2,996.00
24NBT	24" NG Built In Grill - 24x18 (432 sq. in.), 32,000 Btu's, Rear Rotisserie (10,000 Btu's)	\$2,873.00
24NBT-00SP	24" NG Built In Grill - 24x18 (432 sq. in.), 32,000 Btu's	\$2,544.00

Note: All Built In Grills are NG and come with LP orifices.

### "T" Series - Portable Grills

36PCT	36" LP Portable Grill - 36x18 (648 sq. in.), 50,000 Btu's, Side Burner (12,000 Btu's), Rear Rotisserie (12,000 Btu's)	\$5,290.00
36PCT-00SP	36" LP Portable Grill - 36x18 (648 sq. in.), 50,000 Btu's	\$4,805.00
30PCT	30" LP Portable Grill - 30x18 (540 sq. in.), 45,000 Btu's, Side Burner (12,000 Btu's), Rear Rotisserie (12,000 Btu's)	\$4,981.00
30PCT-00SP	30" LP Portable Grill - 30x18 (540 sq. in.), 45,000 Btu's	\$4,498.00
24PCT	24" LP Portable Grill - 24x18 (432 sq. in.), 32,000 Btu's, Side Burner (12,000 Btu's), Rear Rotisserie (10,000 Btu's)	\$4,137.00
24PCT-00SP ❖	24" LP Portable Grill - 24x18 (432 sq. in.), 32,000 Btu's	\$3,653.00

Note: All Portable Grills Come LP and you must purchase a NG Conversion Kit for NG, CK-41-NAT or CK-42-NAT plus orifice kit, see page 33.

### "T" Series - In Ground Post / Patio Post Grills

24NGT ❖	24" NG Grill with In-Ground Post - 24x18 (432 sq. in.), 32,000 Btu's, Rear Rotisserie (10,000 Btu's)	\$3,815.00
24NGT-00SP	24" NG Grill with In-Ground Post - 24x18 (432 sq. in.), 32,000 Btu's	\$3,488.00
24NPT ❖	24" NG Grill with Patio Post - 24x18 (432 sq. in.), 32,000 Btu's, Rear Rotisserie (10,000 Btu's)	\$3,927.00
24NPT-00SP	24" NG Grill with Patio Post - 24x18 (432 sq. in.), 32,000 Btu's	\$3,600.00

Note: All In Ground Post/Patio Post Grills are NG and come with LP orifices. Comes with gas-conserving 1-hour timer and the base has been upgraded to stainless steel.



36NBT-00SP



24NBT



30PCT



24NPT

Pricing, model numbers and availability are subject to change without notice.

❖ - Non-Stock, Special Order - NO RETURNS or CANCELLATIONS

## Grill Accessories

**Model No.**      **Description**      **List Price**

### Storage Doors and Drawers

14-20-SSDR	Single Access Door, Right Hinge - 14"H x 20"W	\$348.00
17-24-SSDR	Single Access Door, Right Hinge - 17"H x 24"W	\$400.00
20-14-SSDR ❖	Single Access Door, Right Hinge - 20"H x 14"W	\$352.00
20-30-SSD	Double Access Door - 20"H x 30"W	\$647.00
16-15-DSSD	Double Drawer	\$850.00
18-30-SSDD ❖	Single Access Storage Door with Double Drawer - 18"H x 30"W	\$1,483.00
18-36-SSDD	Single Access Storage Door with Double Drawer and Platter Storage	\$1,829.00



20-30-SSD



16-15-DSSD

### Refrigeration

REF-21	4.0 Cu. Ft. Refrigerator Below Counter with Lock (reversible door hinge)	\$807.00
--------	--	----------



REF-21

### Side Burners, Liners and Vent Hood

3283	NG Built In Single Side Burner 15,000 BTU's (LP orifices and SS Lid Included)	\$632.00
3282T	NG Built In Double Side Burner 25,000 BTU's (LP orifices and SS Lid Included) - "T" Series	\$1,398.00
3282L	NG Built In Double Side Burner 25,000 BTU's (LP orifices and SS Lid Included) - "L" Series	\$1,545.00
24-IL-C ❖	24" Insulating Liner - Fits 2018 Models & Newer	\$1,120.00
30-IL-C	30" Insulating Liner - Fits 2018 Models & Newer	\$1,181.00
36-IL-C	36" Insulating Liner - Fits 2018 Models & Newer	\$1,268.00
VHD-36 <b>NEW</b>	36" Vent Hood (1,000 CFM)	\$4,079.00



VHD-36

### Grill Covers

CB36-D	36" Built In Grill Cover	\$146.00
CB30-D	30" Built In Grill Cover	\$136.00
CB24-D	24" Built In Grill Cover	\$127.00
CC36-D	36" Portable Grill Cover	\$262.00
CC30-D	30" Portable Grill Cover	\$239.00
CC24-D	24" Portable Grill Cover, In-Ground, Patio Post	\$195.00
CB2SB-D ❖	Double Side Burner Cover for 3282 (T/L)	\$215.00



3282L

### Conversion Kits

CK-41-NAT*	Portable Conversion Kit LP to NG. Includes reducer bushing, flare adaptor, regulator & 10' hose with quick disconnect	\$213.00
CK-42-NAT* ❖	Portable Conversion Kit LP to NG. Includes regulator & reducer bushing	\$64.00
CK-43-LP*	Portable Conversion Kit NG to LP. Includes regulator hose assembly & support ring assembly	\$126.00



CB24-D

\*Must Order Orifice Kit to Complete Conversion

#### \* NG Orifice Kits

	"L" SERIES	"T" SERIES	LIST PRICE
24"	24-B-51 v	24-B-52	\$27.00
30"	30-B-51 v	30-B-52	\$36.00
36"	36-B-51 v	36-B-52	\$36.00

#### \* LP Orifice Kits

	"L" SERIES	"T" SERIES	LIST PRICE
24"	24-B-51P v	24-B-52P	\$27.00
30"	30-B-51P v	30-B-52P	\$36.00
36"	36-B-51P v	36-B-52P	\$36.00

Pricing, model numbers and availability are subject to change without notice.

❖ - Non-Stock, Special Order - NO RETURNS or CANCELLATIONS



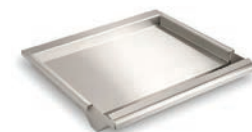
Prices reflect 10/1/25 pricing.

## Grill Accessories & Replacement Parts

Model No.	Description	List Price
-----------	-------------	------------

### Grill Accessories

3574 ❖	Grill Light (for "T" Series Grills)	\$215.00
24-B-28 ❖	Bracket for Grill Light (required on non-backburner units)	\$22.00
GR18A	Stainless Steel Griddle (17"x12 1/5")	\$617.00
3561	Smoker Box	\$147.00
IRB-18	Infra-Red Burner System (for "L" Model Grills Only)	\$538.00
TH-PP-2 ❖	Tank Shield for Patio Post Grill	\$153.00
RK24 ❖	24" Rotisserie Kit	\$279.00
RK30 ❖	30" Rotisserie Kit	\$282.00
RK36 ❖	36" Rotisserie Kit	\$289.00
3092D	Fire Magic Automatic Timer Safety Shut-Off Valve - 1 Hour	\$120.00
5521-11T	1-Hour Stainless Steel Gas Timer Box	\$267.00
TK-1	4-Piece Tool Kit	\$131.00



GR18A



IRB-18

### Common Replacement Parts

36-B-05-3	Vaporizing Panels, Set of 3, for 36" Grills	\$382.00
30-B-05-3	Vaporizing Panels, Set of 3, for 30" Grills	\$343.00
24-B-05-2	Vaporizing Panels, Set of 2, for 24" Grills	\$255.00
24-B-20	Valve Only, "L" Series and Pre 2015	\$93.00
24-B-06	Burner	\$210.00
24-B-04T	Main Burner Electrode / Ignitor Assembly ("T" Series)	\$68.00
24-B-04	Main Burner Electrode / Ignitor Assembly ("L" Series and Pre 2015)	\$68.00
24-B-46	Ignitor Switch, "L" Series	\$23.00
24-B-47	Power Supply, "L" Series	\$290.00
24-B-51T	Main Burner Valve, "T" Series	\$93.00
24-B-55	LED Lighted Disk Large	\$31.00
24-B-56	Converter Harness	\$29.00
36-B-11	Cooking Grids, Set of 3, Pre-2018	\$489.00
24-B-03 ❖	Replacement Electrode, "L" Series, (Pre 2015)	\$101.00
24-B-37L	Large Knob, "L" Series	\$39.00
24-B-37T	Large Knob, "T" Series	\$39.00
24-B-45	Light Switch, "L" Series	\$23.00
24-B-49	Ignitor Module	\$50.00
23305	Analog Thermometer & Bezel (Pre 2020)	\$64.00
24187-15	Light Bulb, "L" Series	\$16.00
24187-26	Light Lens, "L" Series	\$40.00
24187-28	Lamp Assembly, "L" Series	\$82.00



3092D



5521-11T

Pricing, model numbers and availability are subject to change without notice.