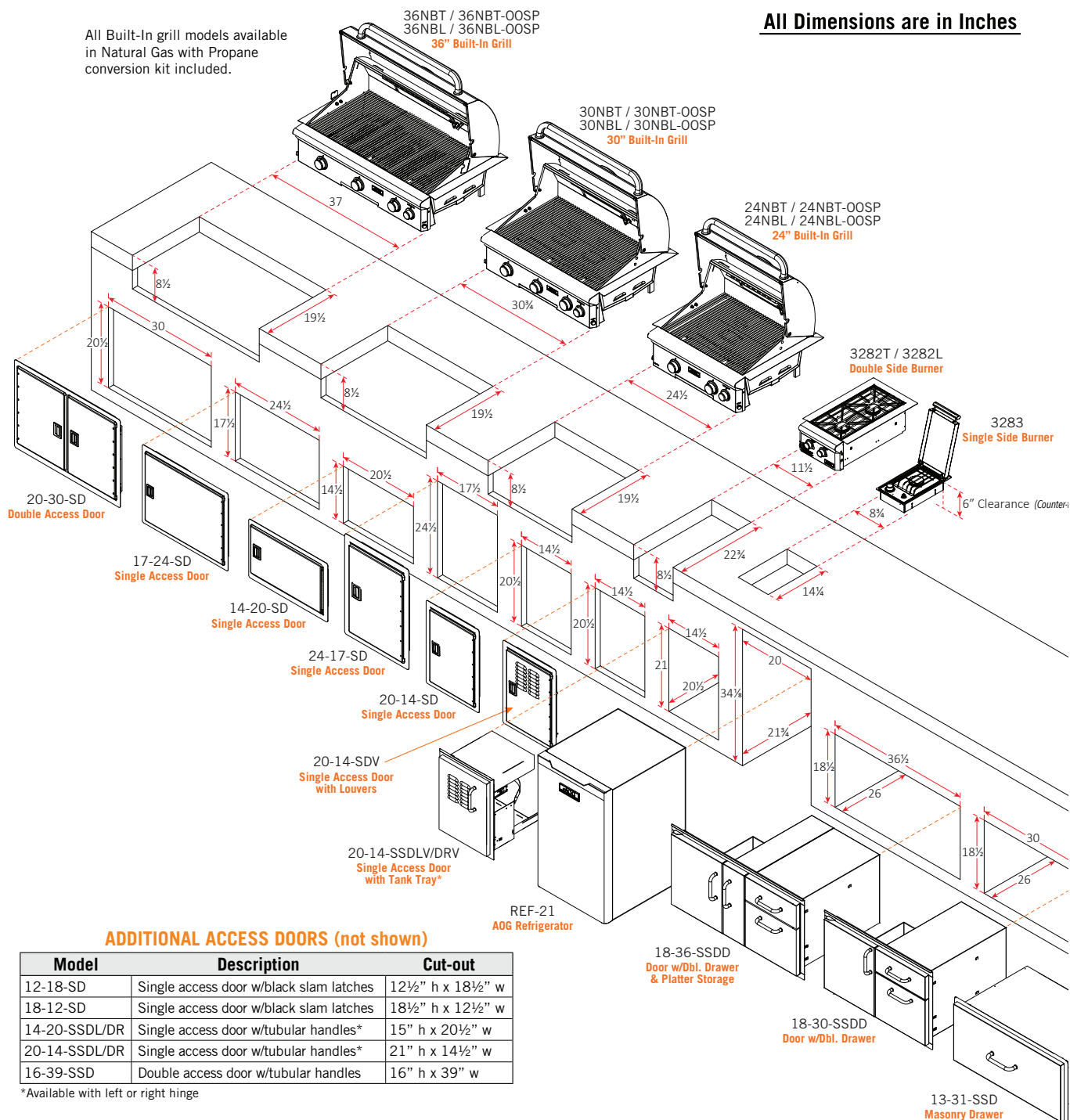


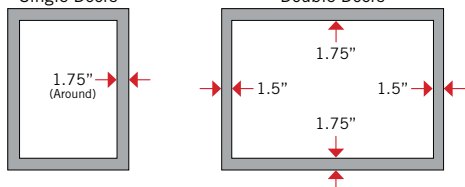
CUT OUT DIMENSIONS

All Built-In grill models available in Natural Gas with Propane conversion kit included.

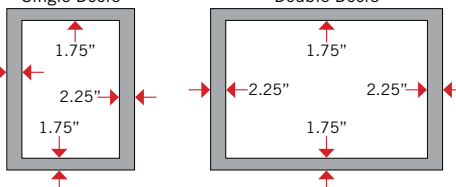
All Dimensions are in Inches



Overlap Dimensions / Doors w/black slam latches

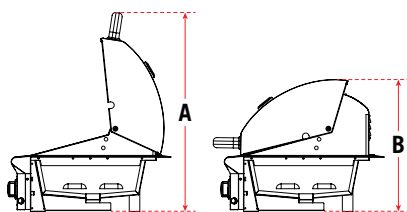


Overlap Dimensions / Doors w/tubular handles



The information provided is for reference purposes only. Detailed instructions and specifications unique to the product purchased can be found in the Manufacturer's Owner's Manual.

CUT OUT DIMENSIONS



Built-In Grills Height Dimensions

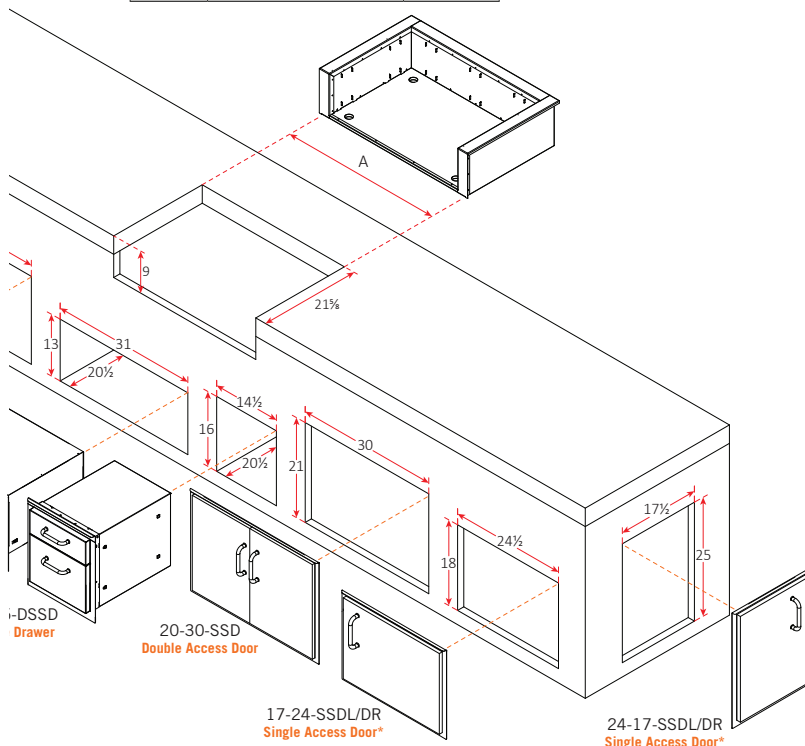
Description	Hood Open (A)	Hood Closed (B)
24NBT/24NBL	30½"	20"
30NBT/30NBL	30½"	20"
36NBT/36NBL	30½"	20"

top to unit bottom)

Grill Insulating Liners

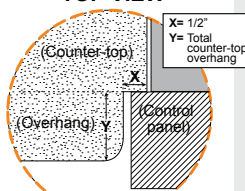
(must be used when installing in a combustible island)

Model	Description	"A" Cut-out
24-IL-C	24" Grill Insulating Liner	28⅞"
30-IL-C	30" Grill Insulating Liner	34⅞"
36-IL-C	36" Grill Insulating Liner	40⅞"

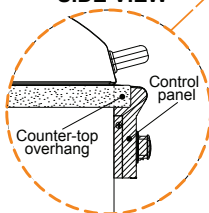


* Available with left or right hinge

TOP VIEW

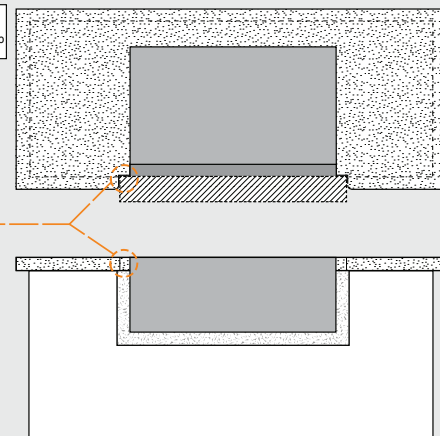


SIDE VIEW



ISLAND COUNTER-TOP OVERHANG

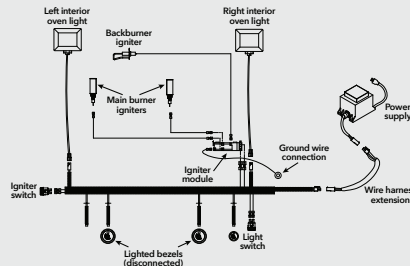
The control panel is designed to sit flush against the enclosure front wall. If the enclosure counter-top extends beyond the front wall, creating a counter-top overhang, it must be cut flush with the front wall for the width of the control panel or a gap will be created exposing the forward portions of the left and right side grill fire walls. See illustrations below.



"L" SERIES ELECTRICAL SPECIFICATIONS

- "L" Series grills require 120VAC (5 AMP min.) power to operate
- Power supply rating - 120VAC / 0.3A / 60 Hz
- Oven lights rating - 12V / 10 watt halogen bulb

"L" SERIES BUILT-IN GRILL WIRING DIAGRAM *



*24" model shown. Model wire diagrams vary between models, a wire diagram specific to each unit can be found affixed to the inside of the control panel.

OUTDOOR KITCHEN CONSIDERATIONS

- Carefully consider grill size & accessories needed
- Combustible construction requires insulating liner
- Select Natural or Propane (LP gas)
- Determine total gas consumption for supply line size
- Access required to gas connections and shut off valve
- Plan location of propane tank away from grill and appliances
- Always refer to the installation and operating instructions of your American Outdoor Grill® and/or accessories for installation guidelines & safety warnings before starting your project
- Always check all gas connections for leaks
- Provide ventilation in island for gas vapors. Allow at least four ventilation openings (two at floor level and two 16" above floor 10 in² each) at opposing ends/sides

LOCATION

- Identify outdoor area where grill will be installed
- Determine the utilities needed (gas, water, electricity, drainage, etc.)
- Consider element exposure (sun, wind direction, weather, etc.)

MATERIALS

- Foundation - concrete
- Base - brick, stone, stucco, concrete
- Counter top - tile, granite, marble, concrete

The information provided is for reference purposes only. Detailed instructions and specifications unique to the product purchased can be found in the Manufacturer's Owner's Manual.