



EXPLOSION-PROOF ELECTRIC MOTORS

1 PHASE - C FACE 1725 RPM

RMI Part No.	HP	Frame Size	Shaft	Voltage	Amp Rating	
					115v	230v
EMC-1	1	56C	5/8"	115/230	11.2	5.6
EMC-1.5	1.5	56C	5/8"	115/230	12	6
EMC-2	2	184C	7/8"	115-208/230	22	11.6
EMC-3	3	215C	1 1/8"	115/230	30	15
EMC-5	5	215C	1 1/8"	230		21

3 PHASE - C FACE 1725 RPM

RMI Part No.	HP	Frame Size	Shaft	Voltage	Amp Rating	
					115v	230v
EMCT-1	1	56C	5/8"	208-230/460	3.6	1.8
EMCT-1.5	1.5	56C	5/8"	208-230/460	4.6	2.3
EMCT-2	2	56C	5/8"	230/460	6	3
EMCT-3	3	182TC	1 1/8"	230/460	8.2	4.1
EMCT-5	5	184TC	1 1/8"	230/460	13.6	6.8
EMCT-7.5	7.5	213TC	1 3/8"	230/460	20.2	10
EMCT-10	10	215TC	1 3/8"	230/460	26	13

C FACE 3600 RPM for Corken C Model Pumps

RMI Part No.	HP	Frame Size	Phase	Voltage	Amp Rating	
					115v	230v
2556	1	C10/C12	1	115-208/230	12	6
4261	2	C12/C13	1	115-208/230	20	10
2557	3	C14	3	230/460	4	8

1 PHASE Rigid Base 1725 RPM

RMI Part No.	HP	Frame Size	Shaft	Voltage	Amp Rating	
					115v	230v
EMS-1	1	143T	5/8"	115/230	14.0	7.0
EMS-1.5	1.5	184	7/8"	115/230	19.0	9.5
EMS-2	2	182T	1 1/8"	115/230	22.0	11.0
EMS-3	3	215	1 1/8"	115/230	30.0	15.0
EMS-5	5	215	1 1/8"	115/230		26.0

1 PHASE Rigid Base 3450 RPM

RMI Part No.	HP	Frame Size	Shaft	Voltage	Amp Rating	
					115v	230v
EMSF-1	1	56	5/8"	115/230	12	6
EMSF-2	2	145T	7/8"	115-208/230	23	11.5
EMSF-3	3	184T	1 1/8"	115/230	29	14.5

3 PHASE Rigid Base 1725 RPM

RMI Part No.	HP	Frame Size	Shaft	Voltage	Amp Rating	
					115v	230v
EM-1	1	56	5/8"	208-230/460	3.6	1.8
EM-1.5	1.5	145T	7/8"	230/460	4.4	2.2
EM-2	2	145T	7/8"	230/460	5.8	2.9
EM-3	3	182T	1 1/8"	230/460	8.4	4.2
EM-5	5	184T	1 1/8"	230/460	13.4	6.7
EM-7.5	7.5	213T	1 3/8"	230/460	17.2	8.6
EM-10	10	215T	1 3/8"	230/460	24	12
EM-15	15	254T	1 5/8"	230/460	36	18
EM-20	20	256T	1 5/8"	230/460	48	24
EM-25	25	284T	1 7/8"	230/460	61	30.5
EM-30	30	286T	1 7/8"	230/460	72	36

3 PHASE Rigid Base 3600 RPM

RMI Part No.	HP	Frame Size	Shaft	Voltage	Amp Rating	
					115v	230v
EMF-1	1	56	5/8"	208-230/460	3.6	1.8
EMF-2	2	145T	7/8"	230/460	4.8	2.4
EMF-3	3	145T	7/8"	230/460	7.2	3.6
EMF-5	5	184T	1 1/8"	230/460	11.8	5.9
EMF-7.5	7.5	184T	1 1/8"	230/460	16.8	8.4
EMF-10	10	215T	1 3/8"	230/460	23.6	11.8

STARTERS



- Standard on-off switch with explosion proof box for motors with low ampere electric service (does not provide over-load protection).
- Manual starter provides overload starter protection, explosion proof enclosure with lever lock and pad lock feature. Economical control for medium ampere electrical service range.
- Magnetic starter provides starter protection, explosion proof enclosure, and magnetic circuit contacts. Excellent control for larger motor installations.

SWITCHES AND STARTERS FOR EXPLOSION PROOF AREA CLASS I GROUP D FOR PROPANE INSTALLATIONS

SINGLE PHASE SERVICE

Motor HP	Switch, On-Off		Manual Starter		Magnetic Starter	
	115V	230V	115V	230V	115V	230V
1	XS-52C	XS-52C	609-AHX	609-AHX	509-AHXD	509-AHXA
1.5	--	--	609-BHX	609-AHX	509-BHDX	509-AHXA
2	--	--	609-BHX	609-AHX	509-BHDX	509-AHXA
3	--	--	609-XHX	609-BHX	509-XHDX	509-BHXA
5	--	--	--	609-XHX	--	509-XHXA

THREE PHASE SERVICE

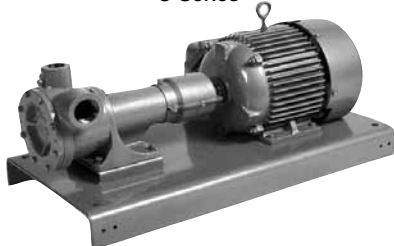
Motor HP	Switch, On-Off		Manual Starter		Magnetic Starter	
	230V	460V	230V	460V	230V	460V
1-1.5	XS-58C	XS-58C	--	--	--	--
2	--	--	609-AHW	609-AHW	509-AHA	509-AHB
3	--	--	609-AHW	609-AHW	509-AHA	509-AHB
5	--	--	609-BHW	609-AHW	509-BHA	509-AHB
7.5	--	--	609-BHW	609-BHW	509-BHA	509-BHB
10	--	--	--	609-BHW	509-CHA	509-BHB
15	--	--	--	--	509-CHA	509-CHB



Regenerative turbine pumps. Ductile iron casing, balance type mechanical seal, and free floating bronze impeller provide years of service and quiet operation.



C Series



F Series

***Must Specify Motor When Ordering**

CORO-FLO CYLINDER FILLING PUMPS

- C10 ideal for the one scale bottle filling operation. Fills 20# cylinders in 30 seconds. Fills 100# cylinders in 2.5 minutes, and fuels through a meter at 7 GPM.
- C12 for those who want to do it faster. Especially recommended for motor fueling and "batch" fork lift filling. Fills 20# cylinders in 15 seconds, 100# cylinders in 2 minutes. Perfect for motor fueling through a meter at 15 GPM.

C MODEL CLOSE COUPLED SERIES

RMI PART NO.		Capacity GPM 50 PSID	Capacity GPM 75 PSID	Inlet	Outlet	Max PSID	H.P. Rating	Motor Phase
Pump, Starter & By Pass	Pump & Starter							
C10JD-SM-B	C10JD-SM	6.5	2.5	1 1/4"	1"	75	1.0	1
C12JD-SM-B	C12JD-SM	15	11	1 1/2"	1"	85	1.0	1
C13JD-SM-B	C13JD-SM	22	17	1 1/2"	1"	100	2.0	1
C14HD (Starter not included)		32	25	1 1/2"	1"	100	3.0	3

F SERIES CORO-FLO CYLINDER FILLING PUMP

RMI Part No.		Capacity - GPM		Inlet	Outlet	Max PSID
Pump, Baseplate & Coupling	Pump Only	50 PSID	75 PSID			
F9CD-101	F9CD	4.5 w/ 1HP	2.25 W/ 1 HP	1 1/4"	1"	100
F10CD-101	F10CD	6.5 W/ 1HP	2.5 W/ 1HP	1 1/4"	1"	90
F12CD-101	F12CD	15 w/ 2HP	11 w/ 2HP	1 1/2"	1"	115
F14CD-101	F14CD	31 w/ 3 HP	25 w/ 3 HP	1 1/2"	1"	125



AUTOGAS PUMP

The Corken Autogas pump achieves new levels of performance with higher flows at high differential pressures, non-pulsating and quiet transfer longer pump life and a design that is easy to repair. The pump is also versatile enough to be used in applications such as cylinder filling, vaporizer feeding, or bulk transfer.

RMI Part No.		GPM	Diff. Pressure	Motor HP
Pump on Base	Pump Only			
FF060CD6A-101-184T	FF060CD6A	8.5	145	5
FF075CD6A-101-215T	FF075CD6A	22.5	145	7.5
FF150CD6A-101-215T	FF150CD6A	33.8	145*	10

*200psig maximum differential pressure with 20HP motor

High Differential Pressure Packages

RMI Part No.	Description
HDPFF060-3P53	Pump, Base Plate, Bypass and 5HP 3PH motor
HDPFF075-3P75	Pump, Base Plate, Bypass and 7.5HP 3PH motor
HDPFF150-3P10	Pump, Base Plate, Bypass and 10HP 3PH motor

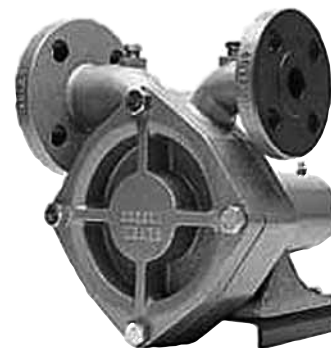
Prepackaged pump assemblies with motor and bypass valve

Options

RMI Part No.	Description
4204-1	10hp Variable Frequency Drive for use with 5HP motors
4204	15hp Variable Frequency Drive for use with 7.5HP motors
4204-2	20hp Variable Frequency Drive for use with 10HP motors

Variable frequency drives allow the use of 3 phase motors on single phase electric service. Can also be used instead of a starter with 3 phase service.

FF150 Base Mounted

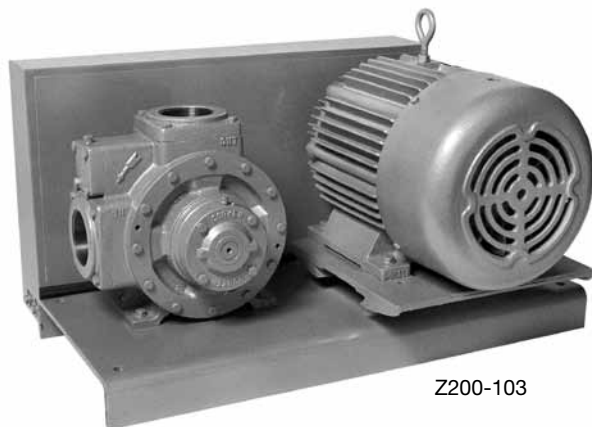


- Ideal for dual hose dispensers and multiple dispensers
- ANSI Flanges 1 1/2" inlet X 1" outlet
- Continuous Duty Capability
- Self-aligning, free-floating impeller

Solutions beyond products...

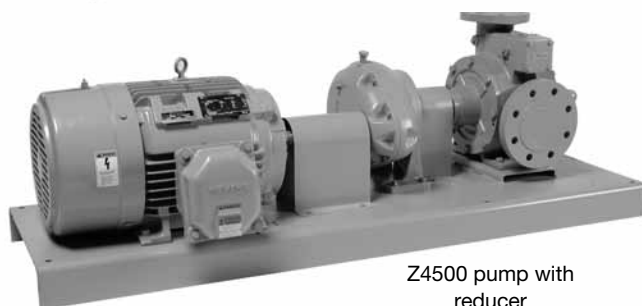
CORKEN
IMEX

CORO-VANE BULK FILL PUMPS



Z200-103

- Sliding vane design with internal safety relief valve.
- Large diameter non-metallic pins are not speed sensitive to allow for higher RPM operation
- High Tech materials used on cam and blades to extend life of pump
- Easy maintenance

Z4500 pump with
reducer

RMI Part No.		Inlet/Outlet	Capacity @ 50 PSID	
Pump & Base	Pump Only		GPM @ 640 RPM	GPM @ 780 RPM
Z2000-103	Z2000	2" NPT	69	82
Z3500-103	Z3500*	3" NPT	143	177
Z4500-103	Z4500	4" x 3" FLNG	309	382

*Easy retrofit with 1021 or other 3" pumps.

CORO-VANE FLANGE MOUNTED
TRUCK AND TRANSPORT PUMPS

Z4200

- Reversible side plates
- Anti-cavitation cam
- Low impact high strength drivers
- Needle roller bearings rated for up to 4,000 lbs.

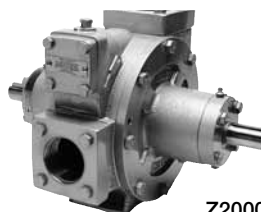


Z3200

RMI Part No.	Inlet	Outlet	Capacity @ 50 PSID	
			GPM @ 640 RPM	GPM @ 780 RPM
Z3200	3" Flange	2" NPT	95	112
Z4200	4" Flange	Dual 2"	278	369

CORO-VANE BASE MOUNTED TRUCK PUMPS

- Double Shaft Extension for LH or RH PTO
- Hydraulically Actuated Blades



Z2000

RMI Part No.	Inlet	Outlet	Capacity
Z2000	2" NPT Flange	2"	40-85 GPM

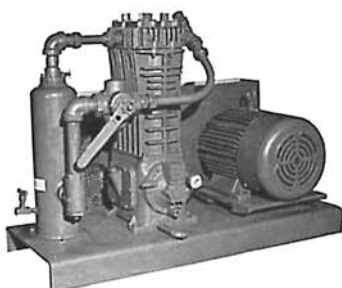
Hydraulic motor mounting adapters

- RMI part number 4496-X1

RMI Part No.	Pump Model
4496-X1	Z3200
4496-1X1	Z4500

DRY CYLINDER COMPRESSORS

- Designed for liquid transfer and residual vapor recovery.
- Contamination-free, oil-free delivery.
- Fully engineered design.



M3FBA Series

RMI Part No.		Capacity		Motor HP	RPM	Standard Pipe Size	
Complete Bulk Plant Transfer Unit*	Compressor & Fly Wheel Only	GPM	CFM			Vapor	Liquid
91M3FBA-107	91M3FBA	50	8.3	5	600	1"	1 1/4"
291M3FBA-107	291M3FBA	88	16	7.5	780	1 1/4"	2"
491M3FBA-107	491M3FBA	198	36	15.0	825	2"	3"
691M3FBA-107	691M3FBA	330	60	25.0	822	3"	4"

*Transfer Unit includes compressor, gauges, base, piping, strainer, 4-way valve, liquid trap, belt guards and sliding base. Motor is not included.