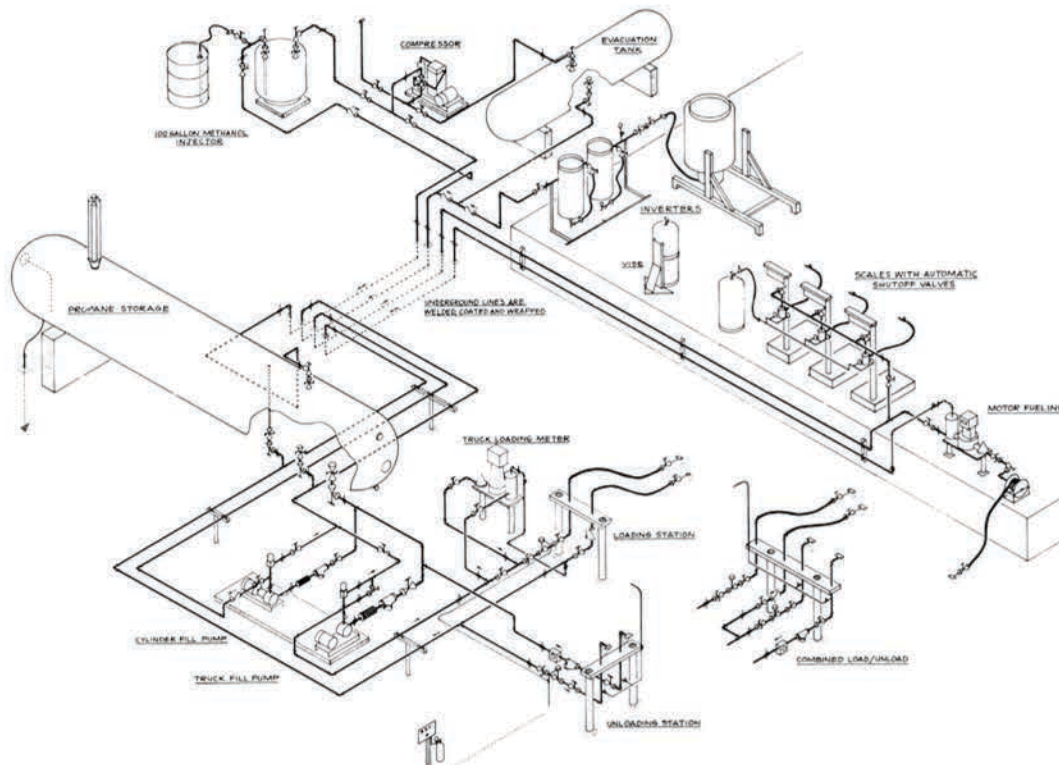


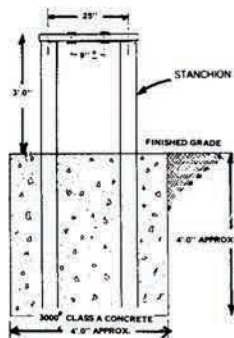
PRO-CHEM SERVICES

ASSISTANCE WITH PROJECT MANAGEMENT

- Bulk Storage Plants Design
- Pump & Compressor Systems
- Methanol Injectors
- Cylinder Evacuation Systems
- Scale Fill Systems
- Propane Vaporizer-Mixers



PRO-CHEM BULK TRUCK & TRANSPORT TRANSFER STANCHION

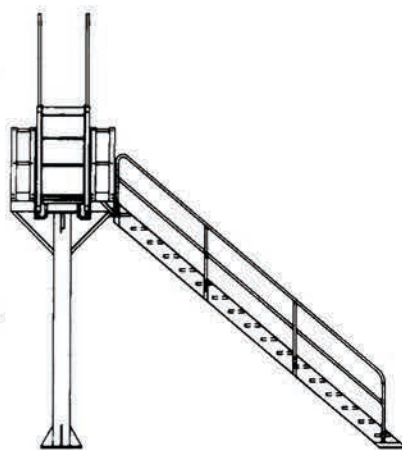


Heavy duty bulkhead constructed with 4" diameter uprights, 6" wide cross pieces and 3000# couplings. Bushings available to reduce to smaller sizes while maintaining break-a-way feature.

RMI Part No.	Openings	Typical Application
PC3168-2	2" x 2"	Standard Bulk Truck
PC3168-3	3" x 2"	High Capacity
PC3168-2S	2" x 2" x 2" x 2"	Combo Load / Unload
PC3168-2C	2" x 2" x 2"	Combo Common Vapor
PC3168-3C	3" x 2" x 2"	Combo Common Vapor

RAIL CAR UNLOADING TOWER

Safe, reliable car access tower. The tower and platform are of primed steel construction with a slip resistant work surface. The aluminum gangway accommodates most tank car configurations. Gangway is extendable from 53" to 75". An optional safety ring is available. Tower size is verified through the completion of an easy to follow application data sheet. Please call for information.



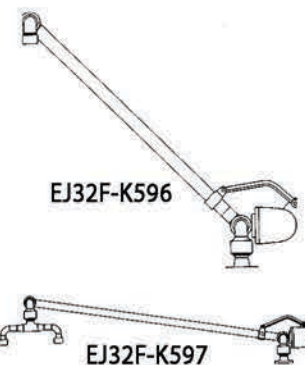
UNLOADING ARMS

EJ32F-K596

Spring balanced loading arm for vapor line in railcar unloading. 2" 300# RF inlet flange with 2" MNPT outlet. Arm is 112" OAL.

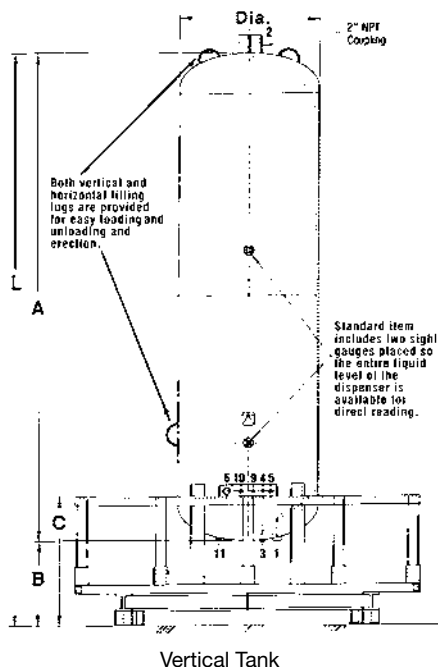
EJ32F-K597

Spring balanced siamese loading arm for liquid line in railcar unloading. 3" 300# RF inlet flange with two (2) 2" MNPT outlet. Arm is 112" OAL.



VERTICAL STORAGE TANKS

VERTICAL BULK STORAGE TANKS



RMI Part No.	W.C.	LP Cap. (lbs)	Diameter	Dimensions					W.P.	T.W.
				L	A	B	C	D		
VT 660	660	400	3'-6"	11'-10"	9'-11 1/2"	1'-8 3/8"	3'-10"	10"	250	2025
VT1150	1150	920	4'-0"	14'-11 3/8"	13'-3"	1'-8 3/8"	3'-7 7/8"	10"	250	2878
VT1600	1600	1280	4'-0"	20'-4 1/2"	18'-0"	2'-4 1/2"	3'-10"	10"	250	4015
VT1999	1999	1600	4'-6"		18'-7 1/2"				250	4540

• Vertical 1999 can not be used with steel base

VALVE & FITTINGS FOR TANK

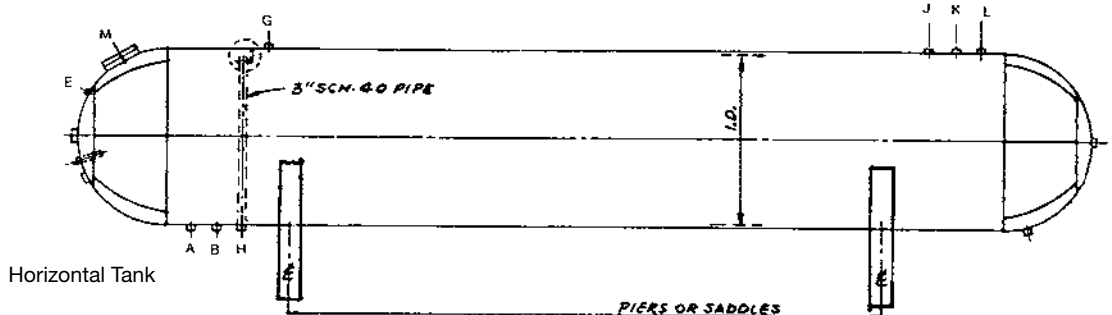
Key	Size	RMI Part No.	Description
1	1 1/4"	C407-10-05	Liquid Internal Valve; 500/1150
1	2"	C477-16-10 or F191	Liquid Internal Valve; 1600
2	1 1/4"	453AM	Liquid Excess Flow Valve; 1600
2	2"	H282-250	Internal Relief Valve; 500/1150
3	3/4"	F101	Internal Relief Valve; 1600
4	1/4"	TSS3169	Excess Flow Valve;
5	3/4"	105-12	Vent Valve, 10% Outage
6	1 1/4"	623B	Hex head, Plug Fitting
8	Flange	6281	Filler Valve
9	1/4"	GSM-300	Float Gauge (2 needed)
10	1/2"	J701	Pressure Gauge - 300#
11	3/4"	F101	Thermometer - 6"
			Excess Flow Valve, Vapor or Bypass Return

- Designed to save time & money
- High visibility/excellent for advertising
- Fast installation/small footprint
- Pre-engineered for Zone 4 seismic & 120 mph wind

MOUNTING BASES (OPTIONAL)

RMI Part No.	Description	Weight (lbs)
22724	10 ft. x shape steel dispenser base, fits 660 & 1600 w.c.	702
22774	Crash posts and protective railing will fit either base	305

HORIZONTAL STORAGE TANKS



HORIZONTAL STORAGE TANKS

Capacity	I.D.	O.A. Length	Weight (lb.)
30,000 wg	130"	46'-10 5/8"	51,253
30,000 wg	108"	65'-10 5/8"	51,470
18,000 wg	108"	40'-11 3/8"	35,862
12,000 wg	84"	44'-9 1/2"	22,369
9,000 wg	84"	35'-3 1/2"	17,305
6,565 wg	84"	25'-9 1/4"	12,243

ADDITIONAL EQUIPMENT

SADDLES—Flat based for 84", 108", 130" diameter tanks. Mounts on top of poured cement piers for easy tank installation.

LADDER & PLATFORM—are designed for easy and safe access to top of tank. Meets OSHA requirements. LADDER and PLATFORM are available as an assembly or separately.

VALVES AND FITTINGS FOR HORIZONTAL BULK STORAGE TANKS

Key	RMI Part No. for Valve	Use	Size
A	C477-24, 990-2A	Liquid Opening	3" FNPT
B	C477-16, ME990-16	Liquid Opening	2" FNPT
H	F190, C477-16	Vapor Opening	2" FNPT
N	J31L-3	Rotary Gauge	1" FNPT
J, K, L	ME9035-4F	Multiport	4" Flange
J, K, L	ME9035-3F	Multiport	3" Mod. Flange
J, K, L	H282-250, MEV200SIR-2590	Relief Valve	2" FNPT
G	C477-16, ME990-16	Vapor Opening	2" FNPT
M	150/1800, 150/2000	Manway Gasket	
E	ME830, 105/300	85% & Pressure Gauge	3/4" FNPT
D	ME930-XXX, ME931	Float Gauge	2 1/2" FNPT
C	MEJ701	Thermometer	1/2" FNPT
P	TP10	Asphaltic Tank Pad	3/4" x18"x10'

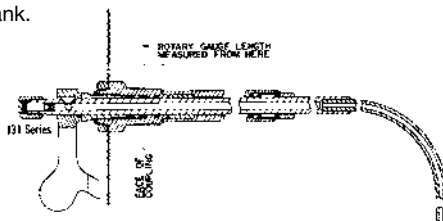
FISHER ROTARY GAUGE

J31L Series—Heavy duty gauge for either stationary or mobil tanks over 1200 gallons. 1" NPT container connection. Shipped in straight length, can be bent to fit all tank.

FISHER



J31L Series



RMI Part No.	Description / Length (Tank I.D.)
J31L-1	Fisher Rotary Gauge, 68"
J31L-2	Fisher Rotary Gauge, 69"-92"
J31L-3	Fisher Rotary Gauge, 93"-108"
J31L-3L	Fisher Rotary Gauge, 109"-140"
P323	Dial Face
T10971000A2	Replacement Vent Cap
T1095106562	O-Ring
T1095606162	Packing

THERMOMETERS



MEJ701

RMI Part No.	Stem Length	Dial Size	Connection
J700	4"	2"	1/2" NPT
J701	6"	2"	
MEJ700	4"	2"	
MEJ701	6"	2"	
MEJ702	4"	3"	
MEJ703	6"	3"	3/4" MNPT x 1/2" FNPT
T-Well	--		

COMBINATION VALVES

Designed for installation on bulk storage containers, the valve combines a pressure gauge and a liquid level gauge.



J415-1



ME830

RMI Part No.	Container Connection	Dial Size	Vent Valve	Gauge Included
ME830	3/4"	Ductile	Yes	No
MEJ415	3/4"	Steel	No	No
MEJ415G	3/4"	Steel	Yes	Yes
J415	3/4"	Steel	No	No
J415-1	3/4"	Steel	Yes	Yes

MARSHALL EXCELSIOR ACCU-MAX FLOAT GAUGES



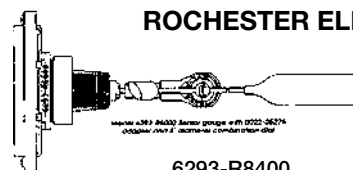
RMI Part No.	Description
ME930-905	4" Glow Dial
ME930C-905	4" Non-Glow Dial
ME940-905	8" Globe Dial
ME940C-905	8" Non-Glow Dial
ME930-240	4" Dial Glass
ME930-211	4" Dial Seal
ME930-222	4" Dial Mounting Bracket
ME940-210	8" Dial Glass
ME940-211	8" Dial Seal
ME940-206	8" Dial Mounting Bracket
ME930-212	Spiral Gasket
ME930-244	Dial Screw
ME930-243	Dial Nut
ME930-223	Mounting Stud
ME930-224	Mounting Nut

Replacement parts for float gauges. Parts are compatible with other manufacturer's gauges.

Designed to measure liquid levels in horizontal DOT and stationary ASME tanks. All gauges feature an easy to read glow in the dark dial DOT type features an integral spring loaded float arm for maximum life in mobile applications. * Other sizes are available as a special order

RMI Part No.	Type	Dial Size	Tank Diameter
ME930-72	DOT	4"	72"
ME930-79	DOT	4"	79"
ME930-82	DOT	4"	82"
ME930-84	DOT	4"	84"
ME930-86	DOT	4"	86"
ME940-105	ASME	8"	105"
ME940-108	ASME	8"	108"
ME940-114	ASME	8"	114"
ME940-130	ASME	8"	130"
ME931	2 1/2" MNPT Mounting Flange		

ROCHESTER ELIMINATOR



6293-R8400

Replacement for 1" rotary gauges. Can be used only on stationary tanks up to 84" diameter and having a separate fixed liquid-level valve.

RMI Part No.	Description
6293-R8400*	4" Dial Face, End Mount for 1" FNPT

*Must specify tank diameter.

TANK CAR THERMOMETER



T-10B

-30° to +120°
Range, 12" Long.
Chain not included.
Organic liquid filled.

RMI Part No.	Description
T-10B	Thermometer Only
T-10C	Thermometer with steel armour

FULL CIRCLE HOSE SWIVELS



JO-1FC

- Stainless Steel Housing
- Compact Design
- UL Standard: 567
- Field Repairable
- 350 PSIG Working Pressure
- Full Port

RMI Part No.	Size	Diameter	Length
JO-34FC	3/4"	2 1/2"	3 3/8"
JO-1FC	1"	2 1/2"	3 3/8"
JO-1SK/RK	Repair kit for 3/4" & 1"		

MARSHALL E-Z TURN SWIVEL



ME850SS-6

- All Stainless Steel Construction
- UL Listed for LP & NH₃

RMI Part No.	Description
ME850SS-6	3/4" Swivel
ME850SS-6/8	3/4" x 1" Swivel
ME850SS-8	1" Swivel



OPW ENGINEERED SYSTEMS SWIVELS

The full line of swivels/configurations from OPW are available. RMI can still provide swivels and repair parts from FMC.



3220-01XX
Style 20

1 plane of rotation



3230-01XX
Style 30

1 plane of rotation



3240-01XX
Style 40

1 plane of rotation

RMI Part No.	Size	Style	Repair Kit	Ball Bearing
3220-0101	1"	20	3001K-1000	H-6712-M
3230-0101	1"	30		
3240-0101	1"	40		
3220-0121	1 1/4"	20	33001K-1100	
3230-0121	1 1/4"	30		
3240-0121	1 1/4"	40		
3420-0201	2"	20	3001K-1200	
3430-0201	2"	30		
3440-0201	2"	40		
3420-0301	3"	20	3001K-1300	
3430-0301	3"	30		
3440-0301	3"	40		

FULL CIRCLE SWIVEL



SMAC-1-1/2

- Zero Maintenance Design
- Pre-Tapped for Relief Valve
- Field Repairable
- UL Listed

RMI Part No.	Size	Description
SMAC-1-1/4	1 1/4"	90° Swivel
SMAC-1-1/2	1 1/2"	90° Swivel
SMAC-200	2"	90° Swivel
SMAC-112ST	1 1/2"	Straight Swivel
SMAC-200ST	2"	Straight Swivel
SMAC-112SK/RK	1 1/2"	Repair Kit

BREAKAWAY COUPLING

Safety coupling provides protection for fill station, hose and vehicle. Coupling disconnects and closes instantly if hose is pulled away.



ME860S-6
Bracket Style



ME861S-6
Lanyard Style

RMI Part No.	Description
ME860S-6	3/4" Bracket
ME861S-6	3/4" Lanyard
ME860S-8	1" Bracket
ME861S-8	1" Lanyard
ME860S-10	1 1/4" Bracket
ME861S-10	1 1/4" Lanyard

OPW BREAKAWAY COUPLING FOR BULKHEADS/STANCHIONS

- Stainless steel construction
- Easily re-assembled after separation
- No shear pins
- Separation occurs with direct or angular pull

RMI Part No.	Description	Seal Kit
NTSPUTS0202	2" SS Breakaway Coupling	NTSPUSRK0202