

REGO CRYOGENIC LIQUID CYLINDER REGULATOR

FEATURES

- Minimum Linet Pressure: 550 psig
- Temporary Range: -320 degrees F to 165 degrees F
- Brass body & diaphragm
- PTFE seat
- Stainless Steel springs, adjusting screw & nut
- Stainless Steel Inlet Filter

REGO CRYO-FLOW PRODUCTS



RMI Part No.	Gas	Liquid Cylinder Connection	Delivery Pressure Range
LCR-B580	Nitrogen/Argon	CGA 580	25-250 psig
LCR-B540	Oxygen	CGA 540	25-250 psig
LCR-B320	Carbon Dioxide	CGA 320	25-250 psig
LCR-C580	Nitrogen/Argon	CGA 580	100-350 psig
LCR-C540	Oxygen	CGA 540	100-350 psig
LCR-C320	Carbon Dioxide	CGA 320	100-350 psig

REGO AUTOMATIC CHANGEOVER REGULATORS

FEATURES:

- Automatically withdraws from reserve cylinder after exhausting the “service” cylinder.
- Cylinder pressure gauges let you know at a glance which cylinder is in use. There is no need to shutdown the system to replace empty cylinders.
- Nickel plated.
- Porous bronze filters are installed in each inlet to minimize the entry of foreign particles.
- Back pressure check valves are installed in each inlet to help assure positive shut-off in case of reverse flow.
- Each unit comes with mounting bracket and a special delivery pressure adjustment wrench.
- Factory set at 50 PSIG on service side. CO2 and N2O regulators are factory set at 100 PSIG on service side.

OUTLET CONNECTION: 1/4” FNPT WIDTH: 7 3/4” HEIGHT: 5 1/8”

RMI Part No.	Gas Service	CGA Inlet Connection	Maximum Inlet Pressure (PSIG)	Delivery Pressure Range (PSIG)
M2523HP320	Carbon Dioxide	320	1800	30-130
M2523HP326	Nitrous Oxide	326	1800	30-130
M2523HP350	Hydrogen	350	3000	30-130
M2523HP540	Oxygen	540	3000	30-130
M2523HP580	Nitrous, Argon, Helium	580	3000	30-130
M2523HP59 0	Industrial Air	590	3000	30-130

REGO COMBINATION PRESSURE BUILD/ECONOMIZER REGULATOR CBH & CBC SERIES

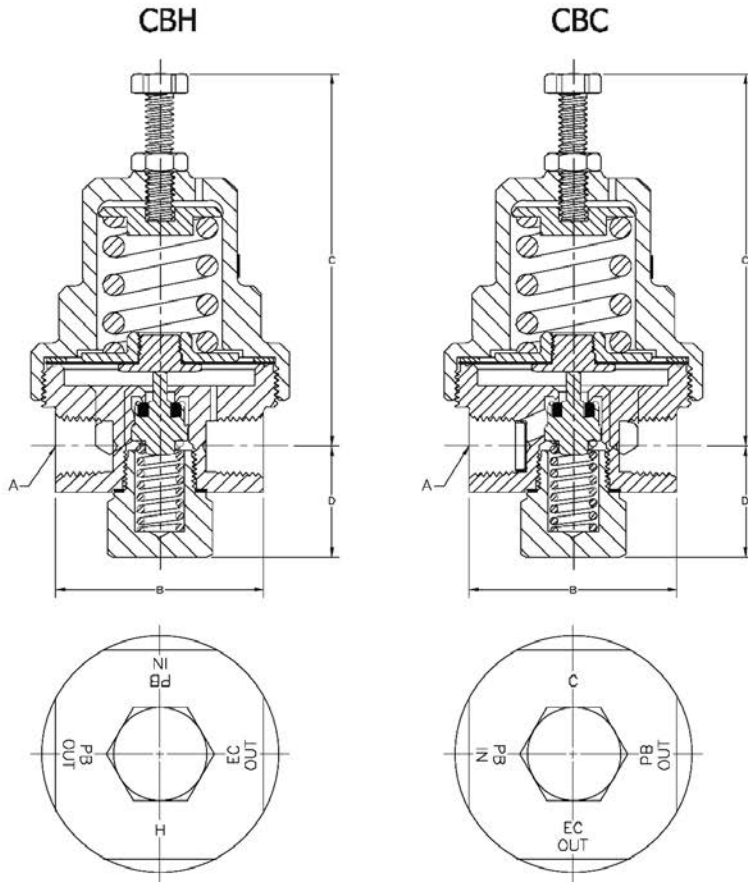
Combines the function of RG and ECL Pressure Building and Economizer functions in one compact unit. Available in Chart and Taylor-Wharton piping geometries and a variety of pressure ratings.

FEATURES:

- Precision silver brazed assembly
- Repeatability performance and geometry
- 100% factory tested
- Temperature range -320° to +165°F



CBH000125



RMI Part No.	Inlet/Outlet Connections FNPT	A	B	C	D	Pressure Setting (PSIG)	Operating Range (PSIG)
CBH000125	1/4"	1/4"	1.82"	3.245"	.966"	125	25-250
CBH000300	1/4"	1/4"	1.82"	3.245"	.966"	300	150-350
CBH000325	1/4"	1/4"	1.82"	3.245"	.966"	325	150-350
CBC000125	1/4"	1/4"	1.82"	3.245"	.966"	125	25-250
CBC000300	1/4"	1/4"	1.82"	3.245"	.966"	300	150-350
CBC000325	1/4"	1/4"	1.82"	3.245"	.966"	325	150-350

*Call for complete REGO catalog.

© Ray Murray Inc. Edition 11

REGULATORS

REGO RG SERIES - CRYOGENIC REGULATORS

FEATURES:

- All parts are copper alloy (brass), PTFE and stainless steel - materials selected specifically for compatibility with cryogenic temperatures down to -320 degrees F.
- Body & bonnet machined from solid brass bar stock.
- PTFE seat helps assure a positive shut-off at cryogenic temperatures down to -320 degrees F.
- High & low pressure regulators are the same compact size - designed to fit in close quarters. The compact high pressure design has no loss of flow capacity.
- Interchangeable with existing cryogenic regulator units.
- Inlet filter helps prevent foreign material from entering the regulator.
- Lock nut is provided to maintain adjusting screw setting.
- Maximum inlet pressure of 550 PSIG.
- Cleaned for liquid oxygen service per CGA G-4.1.



RG Series

RMI Part No.	Inlet/Outlet Connections FNPT	Width	Pressure Setting (PSIG)	Operating Range (PSIG)
RG125	1/4"	2 1/4"	125	25-250
RG300	1/4"	2 1/4"	300	125-350

REGO ECL SERIES - CRYOGENIC ECONOMIZERS

- All parts are copper alloy (brass), PTFE and stainless steel - materials selected specifically for compatibility with cryogenic temperatures down to -320 degrees F.
- Body & bonnet machined from solid brass bar stock.
- The ECL Series utilizes a stainless steel needle seat design that provides a very sensitive flow control at lower pressure settings.
- High & low pressure economizers are the same compact size - designed to fit in close quarters. The compact high pressure design has no loss of flow capacity.
- Interchangeable with existing cryogenic economizer units.
- Inlet filter helps prevent foreign material from entering the economizer.
- Lock nut is provided to maintain adjusting screw setting.
- Maximum inlet pressure of 550 PSIG.
- Cleaned for liquid oxygen service per CGA G-4.1.



ECL Series

RMI Part No.	Inlet/Outlet Connections FNPT	Width	Pressure Setting (PSIG)	Operating Range (PSIG)
ECL22	1/4"	2 1/4"	22	10-150
ECL70	1/4"	2 1/4"	70	10-150
ECL140	1/4"	2 1/4"	140	10-150
ECL325	1/4"	2 1/4"	325	150-350

REGO CRYO-FLOW PRODUCTS

*Call for complete REGO catalog.

© Ray Murray Inc. Edition 11