

DuraFlexSS

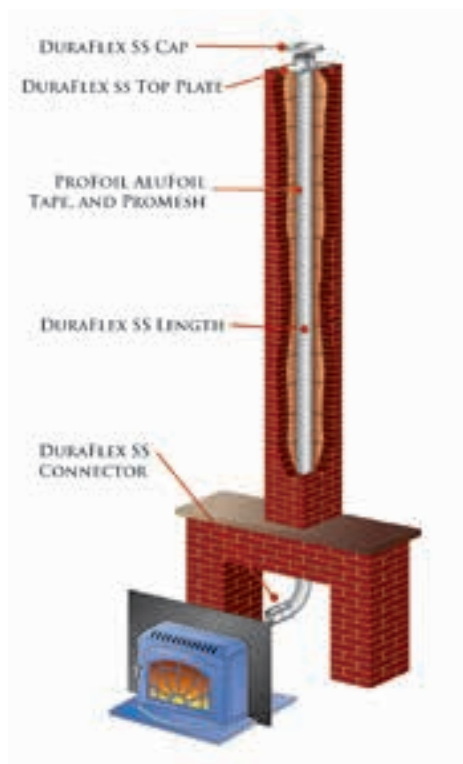
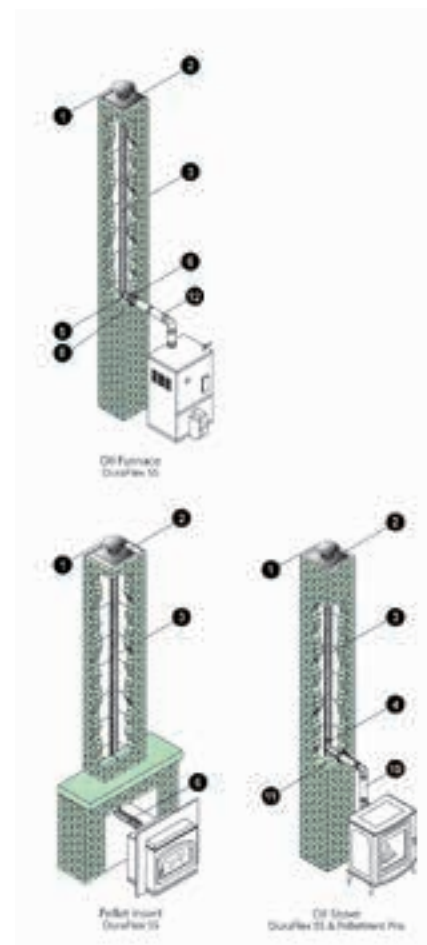
Typical Installations

Installation Key			
1	DuraFlex SS Cap	8	DuraFlex Trim Collar
2	DuraFlex Top Plate	9	Rigid Type B Gas Vent
3	DuraFlex (SW, Pro, 304, 316) Length	10	Rigid Pellet Vent (L Vent)
4	DuraFlex SS Tee	11	Profoil Insulation, AluFoil Tape, ProMesh
5	DuraFlex Mortar Sleeve	12	DVL or DuraBlack Pipe
6	DuraFlex SS Connector	13	Pipe Collar (B Vent)
7	PelletVent Pro Appliance Adaptor		

Applications

DuraFlex Pro ultra flexible relining for masonry chimney. Use w/ gas, wood pellet, oil, or wood appliances. Applications include: fireplace inserts, furnaces, boilers, and water heaters. Its extreme flexibility facilitates problem free installations where multiple offsets are needed.

DuraFlex304 flexible relining for masonry chimney. Use w/ gas, wood pellet, oil, or wood appliances. Applications include: fireplace inserts, furnaces, boilers, and water heaters. Lighter, more economical liners. Excellent when there are minimal offsets in the chimney.



SOME BRANDS ARE ONLY AVAILABLE IN SELECTED AREAS, SEE MAP ON PAGE 4 OR CONTACT YOUR REGIONAL SALES MANGER FOR MORE INFO.

Pricing, model numbers and availability are subject to change without notice. Call for most current information.

❖ – Non Stock Special Order

Goldsboro (Best & Langston) Ph: 888-260-1900 Fax: 919-739-9920

DuraFlex Pro Stainless Steel Kits

Kit includes: top plate, cap, connector, flex connector.

SIZE	6"	List Price
25' FLEX	6DFPRO-25K	\$804.19
35' FLEX	6DFPRO-35K	\$1,058.23



DuraFlex 304 Stainless Steel Kits

SIZE	6"	List Price
25' FLEX	6DF304-25K	\$675.00
35' FLEX	6DF304-35K	\$885.48



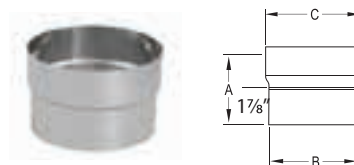
DuraFlex 304 Stainless Steel Length

SIZE	15' FLEX	List Price	25' FLEX	List Price	35' FLEX	List Price
3"	3DF304-15 ❖	\$225.03	3DF304-25	\$348.39	3DF304-35	\$493.56
4"	4DF304-15 ❖	\$246.77	4DF304-25 ❖	\$405.00	4DF304-35 ❖	\$566.13
6"	6DF304-15	\$341.13	6DF304-25	\$557.42	6DF304-35	\$780.97

DuraFlex SS Connector

Use to connect DuraFlex SS length to an appliance, rigid length, or flex vent.

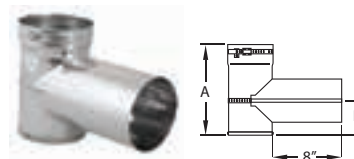
SIZE	STOCK #	A	B	C	List Price
3"	3DFS-FC	4 1/8"	3"	3 1/2"	\$24.81
4"	4DFS-FC ❖	4 1/8"	4"	4 1/2"	\$25.85
6"	6DFS-FC	4 1/8"	6 1/2"	6"	\$20.69



DuraFlex SS Tee w/ Cap

Use to attach to DuraFlex SS length w/ a fast connect band.

SIZE	STOCK #	A	B	List Price
4"	4DFS-T ❖	9 1/2"	4 1/4"	\$96.47
6"	6DFS-T	10 1/2"	4 3/8"	\$137.83



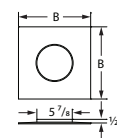
SOME BRANDS ARE ONLY AVAILABLE IN SELECTED AREAS, SEE MAP ON PAGE 4 OR CONTACT YOUR REGIONAL SALES MANGER FOR MORE INFO.

Pricing, model numbers and availability are subject to change without notice. Call for most current information.

DuraFlex SS Top Plate

Use to seal top of masonry chimney and support the flex.

SIZE	STOCK #	A	B	List Price
3"	3DFS-TP	3 3/8"	16"	\$41.35
4"	4DFS-TP ❖	4 3/8"	16"	\$31.57
6"	6DFS-TP	6 3/8"	16"	\$31.57



DuraFlex SS Cap

Use to terminate a relining system at the top of a masonry chimney.

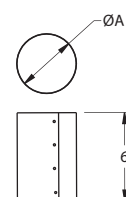
SIZE	STOCK #	A	B	List Price
3"	3DFS-VC	8"	5"	\$91.45
4"	4DFS-VC ❖	8"	5"	\$93.27
6"	6DFS-VC	11"	6"	\$110.32



DuraFlex Mortar Sleeve

Use to protect DuraFlex when passing through a masonry wall.

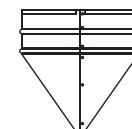
SIZE	STOCK #	A	List Price
4"	4DFS-MS ❖	5"	\$11.98
6"	6DFS-MS ❖	7"	\$14.88



DuraFlex Flex Puller

Use with a rope to guide DuraFlex length down masonry chimney.

SIZE	STOCK #	List Price
3"	3DFS-FP ❖	\$31.57
4"	4DFS-FP ❖	\$40.19
6"	6DFS-FP ❖	\$32.66



TherMix

Use to fill space between a liner and inside masonry chimney.

SIZE	STOCK #	List Price
BAG	RNS-TMG ❖	\$42.10
BOX	RNS-TMX ❖	\$53.71

Note: RNS-TMG must be ordered in pallet Qty (40) only. No individual bags.



ProFoil

Use as insulator for SS liners in masonry chimneys.

SIZE	STOCK #	List Price
5"-6"	56RNS - PFB22x25	\$290.32
8"	8RNS - PFB29x25 ❖	\$580.64



AluFoil Tape

Use to seal seams of ProFoil insulation.

SIZE	STOCK #	List Price
3" x 150'	RNS -ALF	\$90.73



ProMesh

Use to protect the ProFoil during installation.

SIZE	STOCK #	LENGTH	List Price
SM 3"-6"0	RNS - PM1	50'	\$56.15
LG 7"-9"0	RNS -PM2 ❖	50'	\$74.15



SOME BRANDS ARE ONLY AVAILABLE IN SELECTED AREAS, SEE MAP ON PAGE 4 OR CONTACT YOUR REGIONAL SALES MANGER FOR MORE INFO.

Pricing, model numbers and availability are subject to change without notice. Call for most current information.