



VentedCollection

For 70 years Real Fyre™ has manufactured the highest quality, most realistic gas logs in the industry. Available in more than 50 authentic styles, all Real Fyre™ gas log sets are handcrafted, hand painted, and look stunningly realistic replicating the beauty of a wood fire with the convenience and cleanliness of gas.

24" Charred Mountain Birch (CHMBW-24)
(for G4, G45, G46, & P series burners)

24" Charred Majestic Oak (CHMJ-24)
(for G4, G45, G46, & P series burners)

CHARRED SERIES

30" Gnarled Split Oak (GSO-30)
(for G4, G45, G46, & P series burners)

DESIGNER SERIES

24" Post Oak (PO-24)
(for G4, G45, G46, & P series burners)

CLASSIC SERIES

...WHAT A FIRE IS MEANT TO BE



EC Epic Burner System and Logs

MODEL NUMBER	DESCRIPTION	LIST PRICE
EC-48-10N	48" Vented Epic Burner System with Safety Pilot - NG	\$1,163.00
EC-48-10P ❖	48" Vented Epic Burner System with Safety Pilot - LP	\$1,163.00
EC-60-10N	60" Vented Epic Burner System with Safety Pilot - NG	\$1,233.00
EC-60-10P ❖	60" Vented Epic Burner System with Safety Pilot - LP	\$1,233.00

EC Mammoth Pine Logs Only

MP-48	48" Mammoth Pine Logs	\$1,211.00
MP-60	60" Mammoth Pine Logs	\$1,401.00

G47 Burner System with Rumford Style Gas Logs new

GR47-18/20AN ❖	18" Vented Burner with Safety Pilot - NG	\$651.00
GR47-18/20AP ❖	18" Vented Burner with Safety Pilot - LP	\$651.00
GR47-24AN ❖	24" Vented Burner with Safety Pilot - NG	\$702.00
GR47-24AP ❖	24" Vented Burner with Safety Pilot - LP	\$702.00
GR47-18/20-02N	18" Vented Burner with Electronic Valve and On/Off Remote - NG	\$1,091.00
GR47-18/20-02P	18" Vented Burner with Electronic Valve and On/Off Remote - LP	\$1,091.00
GR47-24-02N	24" Vented Burner with Electronic Valve and On/Off Remote - NG	\$1,142.00
GR47-24-02P	24" Vented Burner with Electronic Valve and On/Off Remote - LP	\$1,142.00

G47 Rumford Style Logs Only

RUO-18/20 ❖	18" Rural Oak Logs	\$295.00
RUO-24 ❖	24" Rural Oak Logs	\$350.00
RUSO-18/20	18" Rural Split Logs	\$340.00
RUSO-24	24" Rural Split Logs	\$400.00
RUA-18/20 ❖	18" Rural Aged Oak Logs	\$210.00
RUA-24 ❖	24" Rural Aged Oak Logs	\$230.00



MP
Mammoth Pine Logs



GR47-24



RUSO
Rural Split Oak Logs

SOME BRANDS ARE ONLY AVAILABLE IN SELECTED AREAS, SEE MAP ON PAGE 4 OR CONTACT YOUR REGIONAL SALES MANGER FOR MORE INFO.

Pricing, model numbers and availability are subject to change without notice. Call for most current information.

❖ – Non Stock Special Order

Goldsboro (Best & Langston) Ph: 888-260-1900 Fax: 919-739-9920

G31 3-Tiered Burner System and Logs

MODEL NUMBER	DESCRIPTION	LIST PRICE
Match Lit Without Valve		
G31-18/20N	18" Vented Burner, 55,000 btu - NG	\$844.00
G31-24/30N	24" Vented Burner, 65,000 btu - NG	\$885.00
G31-33/39N ❖	33" Vented Burner, 85,000 btu - NG	\$996.00



G31

Safety Pilot Burners

G31-18/20-AN	18" Vented Burner w/ Safety Pilot, 55,000 btu - NG	\$1,043.00
G31-18/20-AP	18" Vented Burner w/ Safety Pilot, 40,000 btu - LP	\$1,043.00
G31-24/30-AN	24" Vented Burner w/ Safety Pilot, 65,000 btu - NG	\$1,084.00
G31-24/30-AP	24" Vented Burner w/ Safety Pilot, 50,000 btu - LP	\$1,084.00
G31-33/39-AN ❖	33" Vented Burner w/ Safety Pilot, 85,000 btu - NG	\$1,195.00
G31-33/39-AP ❖	33" Vented Burner w/ Safety Pilot, 60,000 btu - LP	\$1,195.00

Features:

- Advanced 3-Tiered Burner
- Porcelainized Reflective Front Panel
- Custom Grate
- Bryte Coals
- Glowing Ember Sand (NG) or Vermiculite (LP) Connector Kit and Damper Clamp

Variable Remote Burners (-17)

G31-18/20-17N	18" Vented Burner w/ Variable Remote, 55,000 btu - NG	\$1,289.00
G31-18/20-17P	18" Vented Burner w/ Variable Remote, 40,000 btu - LP	\$1,289.00
G31-24/30-17N	24" Vented Burner w/ Variable Remote, 65,000 btu - NG	\$1,330.00
G31-24/30-17P	24" Vented Burner w/ Variable Remote, 50,000 btu - LP	\$1,330.00
G31-33/39-17N	33" Vented Burner w/ Variable Remote, 85,000 btu - NG	\$1,441.00
G31-33/39-17P	33" Vented Burner w/ Variable Remote, 60,000 btu - LP	\$1,441.00

Electronic Ignition Burners (-02)

G31-18/20-02N	18" Vented Burner w/ Electronic Remote, 55,000 btu - NG	\$1,483.00
G31-18/20-02P	18" Vented Burner w/ Electronic Remote, 40,000 btu - LP	\$1,483.00
G31-24/30-02N	24" Vented Burner w/ Electronic Remote, 65,000 btu - NG	\$1,524.00
G31-24/30-02P	24" Vented Burner w/ Electronic Remote, 50,000 btu - LP	\$1,524.00
G31-33/39-02N	33" Vented Burner w/ Electronic Remote, 85,000 btu - NG	\$1,635.00
G31-33/39-02P	33" Vented Burner w/ Electronic Remote, 60,000 btu - LP	\$1,635.00

Continued on next page

G31 3-Tiered Burner System and Logs cont.

MODEL NUMBER	DESCRIPTION	LIST PRICE
Electronic Variable Burners (-2v)		
G31-18/20-2VTN	18" Vented Burner w/ Electronic Variable Remote, 55,000 btu - NG	\$1,525.00
G31-18/20-2VTP	18" Vented Burner w/ Electronic Variable Remote, 40,000 btu - LP	\$1,525.00
G31-24/30-2VTN	24" Vented Burner w/ Electronic Variable Remote, 65,000 btu - NG	\$1,566.00
G31-24/30-2VTP	24" Vented Burner w/ Electronic Variable Remote, 50,000 btu - LP	\$1,566.00
G31-33/39-2VTN	33" Vented Burner w/ Electronic Variable Remote, 75,000 btu - NG	\$1,677.00
G31-33/39-2VTP	33" Vented Burner w/ Electronic Variable Remote, 60,000 btu - LP	\$1,677.00

G31 Mountain Crest Gas Logs Only

MCO-18	18" Mountain Crest Oak Logs	\$338.00
MCO-24	24" Mountain Crest Oak Logs	\$382.00
MCO-30	30" Mountain Crest Oak Logs	\$444.00
MCO-33	33" Mountain Crest Oak Logs	\$485.00
MCO-39	39" Mountain Crest Oak Logs	\$548.00
MCS-18	18" Mountain Crest Split Oak Logs	\$352.00
MCS-24	24" Mountain Crest Split Oak Logs	\$400.00
MCS-30	30" Mountain Crest Split Oak Logs	\$464.00
MCS-33	33" Mountain Crest Split Oak Logs	\$506.00
MCS-39	39" Mountain Crest Split Oak Logs	\$570.00

NOTE: CHARRED OAK (CHD), CHARRED SPLIT (CHS), CHARRED AMERICAN OAK (CHAO), CHARRED ROYAL ENGLISH OAK (CHB), CHARRED ANGEL OAK (CHNA) AND CHARRED ANGEL SPLIT OAK (CHNS) ARE ALSO COMPATIBLE W/ G31 BURNER SYSTEM.



**MCO
Mountain Crest Oak**



**MCS
Mountain Crest Split
Oak**

G52 Radiant Fyre Burner and Logs

MODEL NUMBER	DESCRIPTION	LIST PRICE
Match Lit Without Valve		
G52-18/20N	18" Vented Burner, 46,000 btu - NG	\$585.00
G52-18/20P ❖	18" Vented Burner, 36,000 btu - LP	\$585.00
G52-24/30N	24" Vented Burner, 55,000 btu - NG	\$636.00
G52-24/30P ❖	24" Vented Burner, 46,000 btu - LP	\$636.00
Safety Pilot Burners		
G52-18/20-AN ❖	18" Vented Burner w/ Safety Pilot, 46,000 btu - NG	\$784.00
G52-18/20-AP ❖	18" Vented Burner w/ Safety Pilot, 36,000 btu - LP	\$784.00
G52-24/30-AN	24" Vented Burner w/ Safety Pilot, 55,000 btu - NG	\$835.00
G52-24/30-AP	24" Vented Burner w/ Safety Pilot, 46,000 btu - LP	\$835.00
Variable Remote Burners (-17)		
G52-18/20-17N	18" Vented Burner w/ Variable Valve & Remote, 46,000 btu - NG	\$1,030.00
G52-18/20-17P	18" Vented Burner w/ Variable Valve & Remote, 36,000 btu - LP	\$1,030.00
G52-24/30-17N	24" Vented Burner w/ Variable Valve & Remote, 55,000 btu - NG	\$1,081.00
G52-24/30-17P	24" Vented Burner w/ Variable Valve & Remote, 46,000 btu - LP	\$1,081.00
Electronic Ignition Remote Burners (-02)		
G52-18/20-02N	18" Vented Burner w/ Electronic Valve & On/Off Remote, 46,000 btu - NG	\$1,224.00
G52-18/20-02P ❖	18" Vented Burner w/ Electronic Valve & On/Off Remote, 36,000 btu - LP	\$1,224.00
G52-24/30-02N	24" Vented Burner w/ Electronic Valve & On/Off Remote, 55,000 btu - NG	\$1,275.00
G52-24/30-02P	24" Vented Burner w/ Electronic Valve & On/Off Remote, 46,000 btu - LP	\$1,275.00
Electronic Variable Burners (-2V)		
G52-18/20-2VTN	18" Vented Burner w/ Electronic Variable Valve and Remote, 46,000 btu - NG	\$1,266.00
G52-18/20-2VTP	18" Vented Burner w/ Electronic Variable Valve and Remote, 36,000 btu - LP	\$1,266.00
G52-24/30-2VTN	24" Vented Burner w/ Electronic Variable Valve and Remote, 55,000 btu - NG	\$1,317.00
G52-24/30-2VTP	24" Vented Burner w/ Electronic Variable Valve and Remote, 46,000 btu - LP	\$1,317.00



G52 Burner System

Features:

- Advanced Radiant Fyre Burner
- Exclusive Radiant Stainless Steel Booster Grid
- Platinum Embers, Glowing Embers, Sand (NG) or Vermiculite (LP)
- Connector Kit and Damper Clamp

Continued on next page

SOME BRANDS ARE ONLY AVAILABLE IN SELECTED AREAS, SEE MAP ON PAGE 4 OR CONTACT YOUR REGIONAL SALES MANGER FOR MORE INFO.

Pricing, model numbers and availability are subject to change without notice. Call for most current information.

G52 Radiant Fyre Burner and Logs - Cont.

MODEL NUMBER	DESCRIPTION	LIST PRICE
Charred Evergreen Oak		
ENO-18	18" Charred Evergreen Oak Logs	\$430.00
ENO-24	24" Charred Evergreen Oak Logs	\$475.00
ENO-30	30" Charred Evergreen Oak Logs	\$567.00
Charred Evergreen Split Oak		
ENS-18	18" Charred Evergreen Split Oak Logs	\$450.00
ENS-24	24" Charred Evergreen Split Oak Logs	\$500.00
ENS-30	30" Charred Evergreen Split Oak Logs	\$598.00
Colonial Oak		
COLO-18	18" Colonial Oak Logs	\$412.00
COLO-24	24" Colonial Oak Logs	\$452.00
COLO-30	30" Colonial Oak Logs	\$539.00
Burnt Aspen		
BTA-18	18" Burnt Aspen Logs	\$459.00
BTA-24	24" Burnt Aspen Logs	\$509.00
BTA-30	30" Burnt Aspen Logs	\$607.00



ENO
Charred Evergreen Oak



ENS
Charred Evergreen Split Oak



CLO
Colonial Oak



BTA
Burnt Aspen

SOME BRANDS ARE ONLY AVAILABLE IN SELECTED AREAS, SEE MAP ON PAGE 4 OR CONTACT YOUR REGIONAL SALES MANGER FOR MORE INFO.

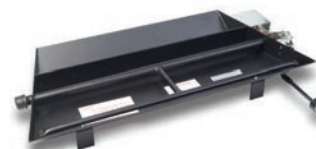
Pricing, model numbers and availability are subject to change without notice. Call for most current information.

❖ – Non Stock Special Order

Goldsboro (Best & Langston) Ph: 888-260-1900 Fax: 919-739-9920

P45 Dual Burner Flame Pan System and Logs

MODEL NUMBER	DESCRIPTION	LIST PRICE
Match Lit Burners		
P45-18N	18" Vented Burner, 43,000 btu - NG	\$230.00
P45-24N	24" Vented Burner, 65,000 btu - NG	\$249.00
P45-30N ❖	30" Vented Burner, 84,000 btu - NG	\$280.00



P45-24A

NOTE: NO VALVE IS PRE-ASSEMBLED ON THE MATCHLIT BURNERS

Safety Pilot Burners		
P45-18AN	18" Vented Burner w/ Safety Pilot, 43,000 btu - NG	\$460.00
P45-18AP ❖	18" Vented Burner w/ Safety Pilot, 36,000 btu - LP	\$460.00
P45-24AN	24" Vented Burner w/ Safety Pilot, 65,000 btu - NG	\$479.00
P45-24AP ❖	24" Vented Burner w/ Safety Pilot, 55,000 btu - LP	\$479.00
P45-30AN	30" Vented Burner w/ Safety Pilot, 84,000 btu - NG	\$510.00
P45-30AP ❖	30" Vented Burner w/ Safety Pilot, 70,000 btu - LP	\$510.00

Variable Remote Burners (-17)

P45-18-17N	18" Vented Burner w/ Variable Valve & Remote, 43,000 btu - NG	\$706.00
P45-18-17P ❖	18" Vented Burner w/ Variable Valve & Remote, 36,000 btu - LP	\$706.00
P45-24-17N	24" Vented Burner w/ Variable Valve & Remote, 65,000 btu - NG	\$725.00
P45-24-17P	24" Vented Burner w/ Variable Valve & Remote, 55,000 btu - LP	\$725.00
P45-30-17N	30" Vented Burner w/ Variable Valve & Remote, 84,000 btu - NG	\$736.00
P45-30-17P ❖	30" Vented Burner w/ Variable Valve & Remote, 70,000 btu - LP	\$736.00



**SO
Shoreline Designer Oak**



**SDW
Shoreline Driftwood**



**FS5-xx-EB
Epic Black Fyre Spheres**

P45 Shoreline Gas Logs

SO-18	18" Shoreline Designer Oak Logs	\$278.00
SO-24	24" Shoreline Designer Oak Logs	\$315.00
SO-30	30" Shoreline Designer Oak Logs	\$405.00
SDW-18	18" Shoreline Driftwood Logs	\$197.00
SDW-24	24" Shoreline Driftwood Logs	\$222.00
SDW-30 ❖	30" Shoreline Driftwood Logs	\$280.00

Fyre Spheres Only

FS5-18-EB	5" Epic Black Fyre Spheres	\$220.00
FS5-24-EB	5" Epic Black Fyre Spheres	\$298.00
FS5-30-EB	5" Epic Black Fyre Spheres	\$377.00
FS5-24-GS	5" Gray Stone Fyre Spheres	\$268.00
FS5-30-GS	5" Gray Stone Fyre Spheres	\$337.00

SOME BRANDS ARE ONLY AVAILABLE IN SELECTED AREAS, SEE MAP ON PAGE 4 OR CONTACT YOUR REGIONAL SALES MANGER FOR MORE INFO.

Pricing, model numbers and availability are subject to change without notice. Call for most current information.

Vented Burners Only – G4, G45 – RADCO – No Valve

Features:

G4 Series Glowing Ember Burner Systems Come w/ Custom Grate, Glowing Embers, Sand (NG) or Vermiculite (LP), Flex Connector Kit, Burner Clips, Damper Clamp.

The G4 Series is available for Natural (NG) or Propane (LP) in 12" to 60" sets.

No Valve is Pre-Assembled.

Must Choose Logs to Complete Set.

MODEL NUMBER	DESCRIPTION	LIST PRICE
G4-12N	12" Vented Standard Burner, 25,000 btu - NG	\$182.00
G4-12P	12" Vented Standard Burner, 25,000 btu - LP	\$182.00
G4-16/19N	16" Vented Standard Burner, 39,000 btu - NG	\$197.00
G4-16/19P ❖	18" Vented Standard Burner, 39,000 btu - LP	\$197.00
G4-18/20N	18" Vented Standard Burner, 75,000 btu - NG	\$202.00
G4-18/20P	18" Vented Standard Burner, 50,000 btu - LP	\$202.00
G4-24N	24" Vented Standard Burner, 90,000 btu- NG	\$212.00
G4-24P	24" Vented Standard Burner, 65,000 btu- LP	\$212.00
G4-30N	30" Vented Standard Burner, 90,000 btu- NG	\$250.00
G4-36N*	36" Vented Standard Burner, 120,000 btu- NG	\$357.00
G4-42N*	42" Vented Standard Burner, 130,000 btu- NG	\$519.00

*Burner Includes Heavy Duty Grate.

Features:

G45 Series Triple T Burner Systems Come w/ Custom Grate, Glowing Embers, Sand (NG) or Vermiculite (LP), Flex Connector Kit, Burner Clips, Damper Clamp. The G45 Series is available for Natural or LP in 16" to 60" sets. No Valve is pre-assembled.

G45-16/19N	16" Vented Standard Burner, 39,000 btu- NG	\$235.00
G45-18/20N	18" Vented Standard Burner, 75,000 btu- NG	\$243.00
G45-18/20P	18" Vented Standard Burner, 50,000 btu- LP	\$243.00
G45-24N	24" Vented Standard Burner, 90,000 btu- NG	\$263.00
G45-24P	24" Vented Standard Burner, 65,000 btu- LP	\$263.00
G45-30N	30" Vented Standard Burner, 90,000 btu- NG	\$308.00
G45-30P	30" Vented Standard Burner, 65,000 btu- LP	\$308.00
G45-36N*	36" Vented Standard Burner, 120,000 btu- NG	\$421.00
G45-36P	36" Vented Standard Burner, 90,000 btu- LP	\$421.00
G45-42N*	42" Vented Standard Burner, 130,000 btu- NG	\$592.00
G45-42P*	42" Vented Standard Burner, 110,000 btu- LP	\$592.00

* Burner Includes Heavy Duty Grate.



G4-24N



G45-24N

Continued on next page

Vented Burners Only – G4, G45 – RADCO – No Valve - Cont.

Features:

GX45 Series Triple T Burner Systems Come w/ Heavy Duty Grate, Glowing Embers, Sand (NG) or Vermiculite (LP), Flex Connector Kit, Burner Clips, Damper Clamp. The GX45 Series is available for Natural (NG) or Propane (LP) in 18" to 30" sets. No Valve is pre-assembled.

Must Choose Logs to Complete Set

MODEL NUMBER	DESCRIPTION	LIST PRICE
GX45-18/20N	18" Vented Standard Burner with Heavy Duty Grate, 75,000 btu- NG	\$267.00
GX45-18/20P ❖	18" Vented Standard Burner with Heavy Duty Grate, 50,000 btu - LP	\$267.00
GX45-24N	24" Vented Standard Burner with Heavy Duty Grate, 75,000 btu - NG	\$290.00
GX45-24P ❖	24" Vented Standard Burner with Heavy Duty Grate, 75,000 btu - LP	\$290.00
GX45-30N	30" Vented Standard Burner with Heavy Duty Grate, 75,000 btu - NG	\$338.00
GX45-30P ❖	30" Vented Standard Burner with Heavy Duty Grate, 75,000 btu - LP	\$338.00

SOME BRANDS ARE ONLY AVAILABLE IN SELECTED AREAS, SEE MAP ON PAGE 4 OR CONTACT YOUR REGIONAL SALES MANGER FOR MORE INFO.

Pricing, model numbers and availability are subject to change without notice. Call for most current information.

Safety Control Systems for G4 and G45 w/ No Valve Pre-assembled

MODEL NUMBER	DESCRIPTION	LIST PRICE
SPK-26N	Safety Pilot Kit (Low Profile) w/ Removable Knob Handle -NG	\$155.00
SPK-26P	Safety Pilot Kit (Low Profile) w/ Removable Knob Handle - LP	\$155.00
APK-10N	Automatic Pilot Kit w/ Basic Transmitter and Receiver (High Capacity) -NG	\$644.00
APK-10P	Automatic Pilot Kit w/ Basic Transmitter and Receiver (High Capacity) - LP	\$644.00
APK-11N	Automatic Pilot Kit w/ Basic Transmitter and Receiver -NG	\$467.00
APK-11P	Automatic Pilot Kit w/ Basic Transmitter and Receiver - LP	\$467.00
APK-15N	Automatic Pilot Kit w/ Basic Transmitter and Receiver, Variable Flame Height -NG	\$516.00
APK-15P	Automatic Pilot Kit w/ Basic Transmitter and Receiver, Variable Flame Height - LP	\$516.00
APK-17N	Automatic Pilot Kit w/ Basic Transmitter and Receiver (Low Profile), Variable Flame Height -NG	\$410.00
APK-17P	Automatic Pilot Kit w/ Basic Transmitter and Receiver (Low Profile), Variable Flame Height -LP	\$410.00
EPK-1N	Electronic Pilot Kit, w/ Basic Transmitter and Receiver, w/ Non-Standing Pilot -NG	\$574.00
EPK-1P	Electronic Pilot Kit, w/ Basic Transmitter and Receiver, w/ Non-Standing Pilot - LP	\$574.00
EPK-2N	Electronic Pilot Kit, with On/Off Basic Transmitter and Receiver - NG	\$574.00
EPK-2P	Electronic Pilot Kit, with On/Off Basic Transmitter and Receiver - LP	\$574.00
AV-17	On/Off Valve - Breakaway Stem and Round Knob	\$56.00
AV-18	On/Off Valve - Angular Valve System	\$59.00
AV-30	Straight Line Gas Valve with Key	\$50.00



SPK-26



APK-15



APK-11



APK-17



APK-10

SOME BRANDS ARE ONLY AVAILABLE IN SELECTED AREAS, SEE MAP ON PAGE 4 OR CONTACT YOUR REGIONAL SALES MANGER FOR MORE INFO.

Pricing, model numbers and availability are subject to change without notice. Call for most current information.

❖ – Non Stock Special Order

Goldsboro (Best & Langston) Ph: 888-260-1900 Fax: 919-739-9920

Remote Compatible Options & Accessories

MODEL NUMBER	DESCRIPTION	LIST PRICE
RR-1A	Basic On/Off Receiver/Transmitter Set	\$90.00
RR-2A	Deluxe On/Off Receiver/Transmitter Set	\$131.00
VR-1A	Basic Variable Receiver/Transmitter Set for 15 & 17 Models	\$109.00
VR-2A	Deluxe Variable Receiver/Transmitter for 15 & 17 Models	\$149.00
WS-1	Wall Switch, Cover and Wiring	\$51.00
WS-2	Wall Switch, Cover and Wiring	\$125.00
WS-3	Wall Switch, Cover and Wiring ("15" and "17" Models Only)	\$63.00



RR-1A



RR-2A



VR-1A



VR-2A

SOME BRANDS ARE ONLY AVAILABLE IN SELECTED AREAS, SEE MAP ON PAGE 4 OR CONTACT YOUR REGIONAL SALES MANGER FOR MORE INFO.

Pricing, model numbers and availability are subject to change without notice. Call for most current information.

Vented Burners Only – G45 – ANSI

Features:

G45 Series ANSI Certified T Burner Systems Come w/ Pre-Assembled Control Valve & Regulator, Custom Grate, Glowing Embers, Sand or Vermiculite, Connector Kit, Log Locators, Burner Clips, Damper Clamp. Standard and See-Thru. The G45 Series is available for Natural or LP in 16" to 36" sets. Remote Systems Include Basic Transmitter and Receiver.



G45-24

Must Choose Logs to Complete Set.

MODEL NUMBER	DESCRIPTION	LIST PRICE
Safety Pilot Burners		
G45-16/19-AN	16" Vented Burner w/ Safety Pilot Kit, 40,000 btu - NG	\$465.00
G45-18/20-AN	18" Vented Burner w/ Safety Pilot Kit, 70,000 btu - NG	\$473.00
G45-18/20-AP	18" Vented Burner w/ Safety Pilot Kit, 45,000 btu - LP	\$473.00
G45-24-AN	24" Vented Burner w/ Safety Pilot Kit, 90,000 btu - NG	\$493.00
G45-24-AP	24" Vented Burner w/ Safety Pilot Kit, 65,000 btu - LP	\$493.00
G45-30-AN	30" Vented Burner w/ Safety Pilot Kit, 95,000 btu - NG	\$538.00
G45-30-AP	30" Vented Burner w/ Safety Pilot Kit, 75,000 btu - LP	\$538.00
Remote Burners		
G45-16/19-11AN	16" Vented Burner w/ Standard On/Off Remote, 40,000 btu - NG	\$777.00
G45-16/19-11AP	16" Vented Burner w/ Standard On/Off Remote, 30,000 btu - LP	\$777.00
G45-18/20-11AN	18" Vented Burner w/ Standard On/Off Remote, 70,000 btu - NG	\$785.00
G45-18/20-11AP	18" Vented Burner w/ Standard On/Off Remote, 45,000 btu - LP	\$785.00
G45-24-11AN	24" Vented Burner w/ Standard On/Off Remote, 90,000 btu - NG	\$805.00
G45-24-11AP	24" Vented Burner w/ Standard On/Off Remote, 65,000 btu - LP	\$805.00
G45-30-11AN	30" Vented Burner w/ Standard On/Off Remote, 95,000 btu - NG	\$850.00
G45-30-11AP	30" Vented Burner w/ Standard On/Off Remote, 75,000 btu - LP	\$850.00
G45-36-11AN	36" Vented Burner w/ Standard On/Off Remote, 95,000 btu - NG	\$963.00
G45-36-11AP	36" Vented Burner w/ Standard On/Off Remote, 75,000 btu - LP	\$963.00
Variable Remote Burners (-15)		
G45-16/19-15AN	16" Vented Burner w/ Standard On/Off Remote, 40,000 btu - NG	\$826.00
G45-16/19-15AP ❖	16" Vented Burner w/ Standard On/Off Remote, 30,000 btu - LP	\$826.00
G45-18/20-15AN	18" Vented Burner w/ Variable Remote, 70,000 btu - NG	\$834.00
G45-18/20-15AP	18" Vented Burner w/ Variable Remote, 45,000 btu - LP	\$834.00
G45-24-15AN	24" Vented Burner w/ Variable Remote, 90,000 btu - NG	\$854.00
G45-24-15AP	24" Vented Burner w/ Variable Remote, 65,000 btu - LP	\$854.00
G45-30-15AN	30" Vented Burner w/ Variable Remote, 95,000 btu - NG	\$899.00
G45-30-15AP	30" Vented Burner w/ Variable Remote, 75,000 btu - LP	\$899.00
G45-36-15AN	36" Vented Burner w/ Variable Remote, 95,000 btu - NG	\$1,012.00
G45-36-15AP	36" Vented Burner w/ Variable Remote, 75,000 btu - LP	\$1,012.00

Continued on next page

SOME BRANDS ARE ONLY AVAILABLE IN SELECTED AREAS, SEE MAP ON PAGE 4 OR CONTACT YOUR REGIONAL SALES MANGER FOR MORE INFO.

Pricing, model numbers and availability are subject to change without notice. Call for most current information.

❖ – Non Stock Special Order

Goldsboro (Best & Langston) Ph: 888-260-1900 Fax: 919-739-9920

Vented Burners Only – G45 – ANSI - Cont.

Features:

G45 Series ANSI Certified T Burner Systems Come w/ Pre-Assembled Control Valve & Regulator, Custom Grate, Glowing Embers, Sand or Vermiculite, Connector Kit, Log Locators, Burner Clips, Damper Clamp. Standard and See-Thru. The G45 Series is available for Natural or LP in 16" to 36" sets. Remote Systems Include Basic Transmitter and Receiver.



G45-24

Must Choose Logs to Complete Set.

MODEL NUMBER	DESCRIPTION	LIST PRICE
--------------	-------------	------------

Variable Remote Burners (-17)

G45-16/19-17AN	16" Vented Burner w/ Variable Remote, 40,000 btu - NG	\$711.00
G45-16/19-17AP	16" Vented Burner w/ Variable Remote, 30,000 btu - LP	\$711.00
G45-18/20-17AN	18" Vented Burner w/ Variable Remote, 70,000 btu - NG	\$719.00
G45-18/20-17AP	18" Vented Burner w/ Variable Remote, 45,000 btu - LP	\$719.00
G45-24-17AN	24" Vented Burner w/ Variable Remote, 90,000 btu - NG	\$739.00
G45-24-17AP	24" Vented Burner w/ Variable Remote, 65,000 btu - LP	\$739.00
G45-30-17AN	30" Vented Burner w/ Variable Remote, 95,000 btu - NG	\$784.00
G45-30-17AP	30" Vented Burner w/ Variable Remote, 75,000 btu - LP	\$784.00
G45-36-17AN	36" Vented Burner w/ Variable Remote, 95,000 btu - NG	\$897.00
G45-36-17AP	36" Vented Burner w/ Variable Remote, 75,000 btu - LP	\$897.00

Electronic Ignition Remote Burners (-02)

G45-16/19-02N	16" Vented Burner w/ Electronic Remote, 40,000 btu - NG	\$905.00
G45-16/19-02P	16" Vented Burner w/ Electronic Remote, 30,000 btu - LP	\$905.00
G45-18/20-02N	18" Vented Burner w/ Electronic Remote, 70,000 btu - NG	\$913.00
G45-18/20-02P	18" Vented Burner w/ Electronic Remote, 45,000 btu - LP	\$913.00
G45-24-02N	24" Vented Burner w/ Electronic Remote, 90,000 btu - NG	\$933.00
G45-24-02P	24" Vented Burner w/ Electronic Remote, 65,000 btu - LP	\$933.00
G45-30-02N	30" Vented Burner w/ Electronic Remote, 95,000 btu - NG	\$978.00
G45-30-02P	30" Vented Burner w/ Electronic Remote, 75,000 btu - LP	\$978.00
G45-36-02N	36" Vented Burner w/ Electronic Remote, 95,000 btu - NG	\$1,091.00
G45-36-02P	36" Vented Burner w/ Electronic Remote, 75,000 btu - LP	\$1,091.00

SOME BRANDS ARE ONLY AVAILABLE IN SELECTED AREAS, SEE MAP ON PAGE 4 OR CONTACT YOUR REGIONAL SALES MANGER FOR MORE INFO.

Pricing, model numbers and availability are subject to change without notice. Call for most current information.

Vented Burners Only – G46 – ANSI

Features:

G46 Series ANSI Certified Glowing Ember Burner Systems Come w/ Pre-assembled Control Valve & Regulator, Custom Grate, Glowing Embers, Sand or Vermiculite, Connector Kit, Log Locators, Piezo Ignitor, Damper Clamp. The G46 Series is available for Natural or LP in 18", 20" to 30" sets. Remote Systems Include Basic Transmitter and Receiver.



G46-24

Must Choose Logs to Complete Set.

MODEL NUMBER	DESCRIPTION	LIST PRICE
Safety Pilot Burners		
G46-18/20N	18" Vented Burner w/ Safety Pilot Kit, 40,000 btu - NG	\$474.00
G46-18/20P	18" Vented Burner w/ Safety Pilot Kit, 40,000 btu - LP	\$474.00
G46-24N	24" Vented Burner w/ Safety Pilot Kit, 55,000 btu - NG	\$498.00
G46-24P	24" Vented Burner w/ Safety Pilot Kit, 55,000 btu - LP	\$498.00
G46-30N	30" Vented Burner w/ Safety Pilot Kit, 65,000 btu - NG	\$524.00
G46-30P	30" Vented Burner w/ Safety Pilot Kit, 65,000 btu - LP	\$524.00

Remote Burners		
G46-18/20-11N	18" Vented Burner w/ Standard On/Off Remote, 40,000 btu - NG	\$786.00
G46-18/20-11P	18" Vented Burner w/ Standard On/Off Remote, 40,000 btu - LP	\$786.00
G46-24-11N	24" Vented Burner w/ Standard On/Off Remote, 55,000 btu - NG	\$810.00
G46-24-11P	24" Vented Burner w/ Standard On/Off Remote, 55,000 btu - LP	\$810.00
G46-30-11N	30" Vented Burner w/ Standard On/Off Remote, 65,000 btu - NG	\$836.00
G46-30-11P	30" Vented Burner w/ Standard On/Off Remote, 65,000 btu - LP	\$836.00

Variable Remote Burners (-15)		
G46-18/20-15N	18" Vented Burner w/ Variable Remote System, 40,000 btu - NG	\$835.00
G46-18/20-15P	18" Vented Burner w/ Variable Remote System, 40,000 btu - LP	\$835.00
G46-24-15N	24" Vented Burner w/ Variable Remote System, 55,000 btu - NG	\$859.00
G46-24-15P	24" Vented Burner w/ Variable Remote System, 55,000 btu - LP	\$859.00
G46-30-15N	30" Vented Burner w/ Variable Remote System, 65,000 btu - NG	\$885.00
G46-30-15P	30" Vented Burner w/ Variable Remote System, 65,000 btu - LP	\$885.00

Variable Remote Burners (-17)		
G46-18/20-17N	18" Vented Burner w/ Variable Remote System, 40,000 btu - NG	\$720.00
G46-18/20-17P	18" Vented Burner w/ Variable Remote System, 40,000 btu - LP	\$720.00
G46-24-17N	24" Vented Burner w/ Variable Remote System, 55,000 btu - NG	\$744.00
G46-24-17P	24" Vented Burner w/ Variable Remote System, 55,000 btu - LP	\$744.00
G46-30-17N	30" Vented Burner w/ Variable Remote System, 65,000 btu - NG	\$770.00
G46-30-17P	30" Vented Burner w/ Variable Remote System, 65,000 btu - LP	\$770.00

Continued on next page

SOME BRANDS ARE ONLY AVAILABLE IN SELECTED AREAS, SEE MAP ON PAGE 4 OR CONTACT YOUR REGIONAL SALES MANGER FOR MORE INFO.

Pricing, model numbers and availability are subject to change without notice. Call for most current information.

❖ – Non Stock Special Order

Goldsboro (Best & Langston) Ph: 888-260-1900 Fax: 919-739-9920

Vented Burners Only – G46 – ANSI cont.

MODEL NUMBER	DESCRIPTION	LIST PRICE
Electronic Ignition Remote Burners (-02)		
G46-18/20-02N	18" Vented Burner w/ Electronic Remote System, 40,000 btu - NG	\$914.00
G46-18/20-02P	18" Vented Burner w/ Electronic Remote System, 40,000 btu - LP	\$914.00
G46-24-02N	24" Vented Burner w/ Electronic Remote System, 55,000 btu - NG	\$938.00
G46-24-02P	24" Vented Burner w/ Electronic Remote System, 55,000 btu - LP	\$938.00
G46-30-02N	30" Vented Burner w/ Electronic Remote System, 65,000 btu - NG	\$964.00
G46-30-02P	30" Vented Burner w/ Electronic Remote System, 65,000 btu - LP	\$964.00

Must Choose Logs to Complete Set.

Vented Logs Only for G4, G45, G46 Series

CHARRED SERIES GAS LOGS -

Compatible w/ G4, G45, G46 and "P" Series Burner Systems.

MODEL NUMBER	DESCRIPTION	LIST PRICE
Burnt Rustic Oak		
HCHR-16	16" Burnt Rustic Oak Vented Logs Only	\$285.00
HCHR-18/20	18/20" Burnt Rustic Oak Vented Logs Only	\$320.00
HCHR-24	24" Burnt Rustic Oak Vented Logs Only	\$376.00
HCHR-30	30" Burnt Rustic Oak Vented Logs Only	\$503.00



**HCHR
Burnt Rustic Oak**

Burnt Split Oak		
HCHS-18/20	18/20" Burnt Split Oak Vented Logs Only	\$345.00
HCHS-24	24" Burnt Split Oak Vented Logs Only	\$398.00
HCHS-30	30" Burnt Split Oak Vented Logs Only	\$530.00



**HCHS
Burnt Split Oak**

Charred Rugged Split Oak		
CHRRSO-18/20	18/20" Charred Rugged Split Oak Vented Logs Only	\$367.00
CHRRSO-24	24" Charred Rugged Split Oak Vented Logs Only	\$418.00
CHRRSO-30	30" Charred Rugged Split Oak Vented Logs Only	\$541.00



**CHRRSO
Charred Rugged
Split Oak**

SOME BRANDS ARE ONLY AVAILABLE IN SELECTED AREAS, SEE MAP ON PAGE 4 OR CONTACT YOUR REGIONAL SALES MANGER FOR MORE INFO.

Pricing, model numbers and availability are subject to change without notice. Call for most current information.

Vented Logs Only for G4, G45, G46 Series - Cont.

CHARRED SERIES GAS LOGS -

Compatible w/ G4, G45, G46 and "P" Series Burner Systems.

MODEL NUMBER	DESCRIPTION	LIST PRICE
Charred Cedar		
CHCR-18/20	18/20" Charred Cedar Stack Vented Logs Only	\$396.00
CHCR-24	24" Charred Cedar Stack Vented Logs Only	\$453.00
CHCR-30	30" Charred Cedar Stack Vented Logs Only	\$579.00

Charred Red Oak

CHRED-18/20	18/20" Charred Red Oak Vented Logs Only	\$396.00
CHRED-24	24" Charred Red Oak Vented Logs Only	\$453.00
CHRED-30	30" Charred Red Oak Vented Logs Only	\$579.00

Charred Northern

CHN-18/20	18/20" Charred Northern Vented Logs Only	\$330.00
CHN-24	24" Charred Northern Vented Logs Only	\$390.00
CHN-30	30" Charred Northern Vented Logs Only	\$519.00

Charred Oak Stack

CHDS-18/20	18/20" Charred Oak Stack Vented Logs Only	\$318.00
CHDS-24	24" Charred Oak Stack Vented Logs Only	\$374.00
CHDS-30	30" Charred Oak Stack Vented Logs Only	\$469.00

Charred Mountain Birch

CHMBW-18/20	18" Charred Mountain Birch Vented Logs Only	\$387.00
CHMBW-24	24" Charred Mountain Birch Vented Logs Only	\$440.00
CHMBW-30	30" Charred Mountain Birch Vented Logs Only	\$559.00
CHMBW-36	36" Charred Mountain Birch Vented Logs Only	\$723.00
CHMBW-42	42" Charred Mountain Birch Vented Logs Only	\$949.00

Charred Oak - Also Compatible with G31 Burner

CHD-16	16" Charred Oak Vented Logs Only	\$285.00
CHD-19	19" Charred Oak Vented Logs Only	\$287.00
CHD-18/20	18/20" Charred Oak Vented Logs Only	\$320.00
CHD-24	24" Charred Oak Vented Logs Only	\$376.00
CHD-30	30" Charred Oak Vented Logs Only	\$498.00



**CHCR
Charred Cedar**



**CHRED
Charred Red Oak**



**CHN
Charred Northern**



**CHMBW Charred
Mountain Birch**



**CHD
Charred Oak**

SOME BRANDS ARE ONLY AVAILABLE IN SELECTED AREAS, SEE MAP ON PAGE 4 OR CONTACT YOUR REGIONAL SALES MANGER FOR MORE INFO.

Pricing, model numbers and availability are subject to change without notice. Call for most current information.

❖ - Non Stock Special Order

Goldsboro (Best & Langston)

Ph: 888-260-1900

Fax: 919-739-9920

Vented Logs Only for G4, G45, G46 Series - Cont.

CHARRED SERIES GAS LOGS -

Compatible w/ G4, G45, G46 and "P" Series Burner Systems.

MODEL NUMBER	DESCRIPTION	LIST PRICE
Charred Split - Also Compatible with G31 Burner		
CHS-18/20	18/20" Charred Split Vented Logs Only	\$345.00
CHS-24	24" Charred Split Vented Logs Only	\$398.00
CHS-30	30" Charred Split Vented Logs Only	\$530.00
CHS-36	36" Charred Split Vented Logs Only	\$686.00



CHS
Charred Split

Charred American Oak - Also Compatible with G31 burner

CHAO-18/20	18/20" Charred American Oak Vented Logs Only	\$398.00
CHAO-24	24" Charred American Oak Vented Logs Only	\$454.00
CHAO-30	30" Charred American Oak Vented Logs Only	\$590.00



CHAO
Charred American Oak

Charred Angel Oak - Also Compatible w/G31 Burner

CHNA-18/20	18/20" Charred Angel Oak Vented Logs Only	\$340.00
CHNA-24	24" Charred Angel Oak Vented Logs Only	\$390.00
CHNA-30	30" Charred Angel Oak Vented Logs Only	\$455.00



PN
Pioneer Oak

Charred Angel Split Oak - Also Compatible w/G31 Burner

CHNS-18/20	18/20" Charred Angel Split Oak Vented Logs Only	\$360.00
CHNS-24	24" Charred Angel Split Oak Vented Logs Only	\$408.00
CHNS-30	30" Charred Angel Split Oak Vented Logs Only	\$480.00



CHGO
Charred Grizzly Oak

Pioneer Oak* - Not Compatible w/G46 Burner

PN-24	24" Pioneer Oak Vented Logs Only	\$460.00
PN-30	30" Pioneer Oak Vented Logs Only	\$600.00
PN-36 ❖	36" Pioneer Oak Vented Logs Only	\$747.00

Charred Grizzly Oak*

CHGO-24	24" Charred Grizzly Oak Vented Logs Only	\$460.00
CHGO-30	30" Charred Grizzly Oak Vented Logs Only	\$644.00

* Recommended to Use GX4 or GX45 Burner Kit with Heavy Duty Grate

SOME BRANDS ARE ONLY AVAILABLE IN SELECTED AREAS, SEE MAP ON PAGE 4 OR CONTACT YOUR REGIONAL SALES MANGER FOR MORE INFO.

Pricing, model numbers and availability are subject to change without notice. Call for most current information.

Vented Logs Only for G4, G45, G46 Series cont.

CHARRED SERIES GAS LOGS -

Compatible w/ G4, G45, G46 and "P" Series Burner Systems. Cont.

MODEL NUMBER	DESCRIPTION	LIST PRICE
Charred Majestic Oak* - Not Compatible w/G46 Burner		
CHMJ-24	24" Charred Majestic Oak Vented Logs Only	\$539.00
CHMJ-30	30" Charred Majestic Oak Vented Logs Only	\$693.00
CHMJ-36	36" Charred Majestic Oak Vented Logs Only	\$842.00
CHMJ-42	42" Charred Majestic Oak Vented Logs Only	\$1,030.00
CHMJ48	48" Charred Majestic Oak Vented Logs Only	\$1,208.00
CHMJ60 ♦	60" Charred Majestic Oak Vented Logs Only	\$1,447.00

Charred Royal English Oak* - Also Compatible w/G31 Burner

CHB-18/20	18" Charred Royal English Oak Vented Logs Only	\$396.00
CHB-24	24" Charred Royal English Oak Vented Logs Only	\$473.00
CHB-30	30" Charred Royal English Oak Vented Logs Only	\$604.00
CHB-36	36" Charred Royal English Oak Vented Logs Only	\$771.00
CHB-42	42" Charred Royal English Oak Vented Logs Only	\$999.00

* Recommended to Use GX4 or GX45 Burner Kit with Heavy Duty Grate



CHMJ
Charred Majestic Oak



CHB
Charred Royal English Oak

Vented Logs Only for G4, G45, G46 Series cont.

DESIGNER SERIES GAS LOGS -

Compatible w/ G4, G45, G46 and "P" Series Burner Systems.

MODEL NUMBER	DESCRIPTION	LIST PRICE
Golden Oak Designer Plus		
RDP-12	12" Golden Oak Designer Plus Vented Logs Only	\$204.00
RDP-16	16" Golden Oak Designer Plus Vented Logs Only	\$220.00
RDP-18	18" Golden Oak Designer Plus Vented Logs Only	\$261.00
RDP-19	19" Golden Oak Designer Plus Vented Logs Only	\$234.00
RDP-20	20" Golden Oak Designer Plus Vented Logs Only	\$279.00
RDP-24	24" Golden Oak Designer Plus Vented Logs Only	\$321.00
RDP-30*	30" Golden Oak Designer Plus Vented Logs Only	\$433.00
RDP-36*	36" Golden Oak Designer Plus Vented Logs Only	\$597.00
RDP-42*	42" Golden Oak Designer Plus Vented Logs Only	\$747.00
RDP-48*	48" Golden Oak Designer Plus Vented Logs Only	\$907.00



RDP
Golden Oak Designer Plus



HRD
Rustic Oak Designer



FO
Forest Oak



AO
American Oak



RED
Red Oak

Rustic Oak Designer		
HRD-16	16" Rustic Oak Designer Vented Logs Only	\$220.00
HRD-18	18" Rustic Oak Designer Vented Logs Only	\$255.00
HRD-24	24" Rustic Oak Designer Vented Logs Only	\$309.00
HRD-30	30" Rustic Oak Designer Vented Logs Only	\$410.00

Forest Oak - While Supplies Last		
FO-18	18" Forest Oak Vented Logs Only	\$295.00
FO-24	24" Forest Oak Vented Logs Only	\$335.00
FO-30	30" Forest Oak Vented Logs Only	\$409.00

American Oak		
AO-18	18" American Oak Vented Logs Only	\$353.00
AO-24	24" American Oak Vented Logs Only	\$408.00
AO-30*	30" American Oak Vented Logs Only	\$518.00

Red Oak		
RED-18	18" Red Oak Vented Logs Only	\$350.00
RED-24	24" Red Oak Vented Logs Only	\$411.00
RED-30*	30" Red Oak Vented Logs Only	\$519.00

*Recommended to use GX4 or or GX45 Burner Kit with Heavy Duty Grate

SOME BRANDS ARE ONLY AVAILABLE IN SELECTED AREAS, SEE MAP ON PAGE 4 OR CONTACT YOUR REGIONAL SALES MANGER FOR MORE INFO.

Pricing, model numbers and availability are subject to change without notice. Call for most current information.

Vented Logs Only for G4, G45, G46 Series cont.

DESIGNER SERIES GAS LOGS -

Compatible w/ G4, G45, G46 and "P" Series Burner Systems.

MODEL NUMBER	DESCRIPTION	LIST PRICE
Split Oak		
S-18	18" Split Oak Vented Logs Only	\$280.00
S-20	20" Split Oak Vented Logs Only	\$296.00
S-24	24" Split Oak Vented Logs Only	\$326.00
S-30	30" Split Oak Vented Logs Only	\$432.00

Split Oak Designer Plus

SDP-18	18" Split Oak Designer Plus Vented Logs Only	\$316.00
SDP-20	20" Split Oak Designer Plus Vented Logs Only	\$341.00
SDP-24	24" Split Oak Designer Plus Vented Logs Only	\$371.00
SDP-30	30" Split Oak Designer Plus Vented Logs Only	\$481.00
SDP-36*	36" Split Oak Designer Plus Vented Logs Only	\$634.00

* Recommended to Use GX4 or or GX45 Burner Kit with Heavy Duty Grate

Old English Coal Grate (w/coals)

VG4-18-C ❖	18" Old English Coal Grate	\$479.00
VG4-24-C ❖	24" Old English Coal Grate	\$518.00
VG4-30-C ❖	30" Old English Coal Grate	\$618.00



S
Split Oak



SDP
Split Oak Designer Plus



VG4

SOME BRANDS ARE ONLY AVAILABLE IN SELECTED AREAS, SEE MAP ON PAGE 4 OR CONTACT YOUR REGIONAL SALES MANGER FOR MORE INFO.

Pricing, model numbers and availability are subject to change without notice. Call for most current information.

❖ – Non Stock Special Order

Goldsboro (Best & Langston) Ph: 888-260-1900 Fax: 919-739-9920

Vented Logs Only for G4, G45, G46 Series cont.

DESIGNER SERIES GAS LOGS CONT. –

Compatible w/ G4, G45, G46 and "P" Series Burner Systems.

MODEL NUMBER	DESCRIPTION	LIST PRICE
Rugged Split Oak		
RRSO-18	18" Rugged Split Oak Vented Logs Only	\$341.00
RRSO-24	24" Rugged Split Oak Vented Logs Only	\$388.00
RRSO-30	30" Rugged Split Oak Vented Logs Only	\$475.00
Woodstack		
WS-18	18" Woodstack Vented Logs Only	\$378.00
WS-24	24" Woodstack Vented Logs Only	\$431.00
WS-30	30" Woodstack Vented Logs Only	\$548.00
Woodland Oak		
WO-18 ❖	18" Woodland Oak Vented Logs Only	\$256.00
WO-24	24" Woodland Oak Vented Logs Only	\$297.00
WO-30 ❖	30" Woodland Oak Vented Logs Only	\$385.00
Mountain Birch		
MBW-18	18" Mountain Birch Vented Logs Only	\$340.00
MBW-24	24" Mountain Birch Vented Logs Only	\$386.00
MBW-30	30" Mountain Birch Vented Logs Only	\$465.00
White Birch		
W-18	18" White Birch Vented Logs Only	\$292.00
W-24	24" White Birch Vented Logs Only	\$328.00
W-30	30" White Birch Vented Logs Only	\$400.00
Western Campfyre		
WCF-18	18" Western Campfyre Vented Logs Only	\$362.00
WCF-24	24" Western Campfyre Vented Logs Only	\$423.00
WCF-30	30" Western Campfyre Vented Logs Only	\$538.00
Royal English Oak Designer* - Not Compatible w/G46 Burner		
BD-18	18" Royal English Oak Vented Logs Only	\$359.00
BD-24	24" Royal English Oak Vented Logs Only	\$430.00
BD-30	30" Royal English Oak Vented Logs Only	\$542.00
BD-36*	36" Royal English Oak Vented Logs Only	\$682.00
Gnarled Split Oak		
GSO-24	24" Gnarled Split Oak Vented Logs Only	\$517.00
GSO-30	30" Gnarled Split Oak Vented Logs Only	\$655.00
GSO-36*	36" Gnarled Split Oak Vented Logs Only	\$812.00

* Recommended to Use GX4 or or GX45 Burner Kit with Heavy Duty Grate



RRSO - Rugged Split Oak



WS - Woodstock



W - White Birch



**WCF
Western Campfyre**



**GSO
Gnarled Split Oak**

SOME BRANDS ARE ONLY AVAILABLE IN SELECTED AREAS, SEE MAP ON PAGE 4 OR CONTACT YOUR REGIONAL SALES MANGER FOR MORE INFO.

Pricing, model numbers and availability are subject to change without notice. Call for most current information.

Vented Logs Only for G4, G45, G46 Series cont.

MODEL NUMBER	DESCRIPTION	LIST PRICE
--------------	-------------	------------

CLASSIC SERIES GAS LOGS

Compatible w/ G4, G45, G46 and "P" Series Burner Systems.

Golden Oak

R-12	12" Golden Oak Vented Logs Only	\$141.00
R-16	16" Golden Oak Vented Logs Only	\$152.00
R-18	18" Golden Oak Vented Logs Only	\$169.00
R-20	20" Golden Oak Vented Logs Only	\$176.00
R-24	24" Golden Oak Vented Logs Only	\$187.00
R-30	30" Golden Oak Vented Logs Only	\$235.00
R-36*	36" Golden Oak Vented Logs Only	\$365.00

Rustic Oak

HR-18	18" Rustic Oak Vented Logs Only	\$169.00
HR-24	24" Rustic Oak Vented Logs Only	\$187.00
HR-30	30" Rustic Oak Vented Logs Only	\$235.00
HR-36	36" Rustic Oak Vented Logs Only	\$365.00

Rugged Oak

RRO-18	18" Rugged Oak Vented Logs Only	\$211.00
RRO-24	24" Rugged Oak Vented Logs Only	\$253.00
RRO-30	30" Rugged Oak Vented Logs Only	\$312.00

Post Oak - While Supplies Last

PO-24	24" Post Oak Vented Logs Only	\$180.00
PO-30	30" Post Oak Vented Logs Only	\$226.00

Royal English Oak*

B-18	18" Royal English Oak Vented Logs Only	\$228.00
B-24	24" Royal English Oak Vented Logs Only	\$283.00
B-30	30" Royal English Oak Vented Logs Only	\$353.00

Coastal Driftwood - Not Compatible w/G46 Burners

CDR-18	18" Coastal Driftwood Vented Logs Only	\$190.00
CDR-24	24" Coastal Driftwood Vented Logs Only	\$212.00
CDR-30	30" Coastal Driftwood Vented Logs Only	\$260.00
CDR-36*	36" Coastal Driftwood Vented Logs Only	\$370.00

* Recommended to Use GX4 or or GX45 Burner Kit with Heavy Duty Grate



R - Golden Oak



HR-Rustic Oak



RRO - Rugged Oak



B - Royal English Oak



CDR - Coastal Driftwood

SOME BRANDS ARE ONLY AVAILABLE IN SELECTED AREAS, SEE MAP ON PAGE 4 OR CONTACT YOUR REGIONAL SALES MANGER FOR MORE INFO.

Pricing, model numbers and availability are subject to change without notice. Call for most current information.

❖ - Non Stock Special Order

Goldsboro (Best & Langston) Ph: 888-260-1900 Fax: 919-739-9920

Accessories for Vented Log Sets

MODEL NUMBER	DESCRIPTION	LIST PRICE
Pine Cones, Wood Chips and Acorns		
PC-4	4 Designer Pine Cones - Assorted Sizes	\$41.00
WC-6	6 Wood Chips	\$48.00
WCH-6	6 Charred Wood Chips	\$54.00
AC-6	6 Acorns	\$35.00



PC-4 - Pine Cones

River Rocks and Wood Chunks		
STN-10	Assorted River Rock Fyre Stones - Set of 10	\$107.00
STN-10I	Ivory River Rock Fyre Stones - Set of 10	\$107.00
STN-10S	Slate River Rock Fyre Stones - Set of 10	\$107.00
STN-20	Assorted Designer River Rock Fyre Stones - Set of 20	\$249.00



WCH-6 - Wood Chips

Décor Packs		
DP-2	Décor Pack - Includes 4 Small Size Wood Chips and 3 Small Pine Cones.	\$55.00
DP-5 ❖	Ember Enhancing Décor Pack - Includes Bryte Coals, Lava Coals, 2 Pine Cones and 2 Wood Chips	\$83.00
DP-7	Ember Enhancing Décor Pack - Includes Bryte Coals, Lava Coals, 2 Pine Cones, 2 Wood Chips and 2 Acorns	\$88.00
HDK-1	Décor Pack - Includes 2 Acorns, 2 Pine Cones and 4 Wood Chips	\$75.00



DP-2

Decorative Branches and Bonus Logs		
BDC-4	Four Charred Branches	\$94.00
SD-BONUS	Special Designer Bonus Logs - 2 in a Box	\$81.00
SS-BONUS	Special Split Logs - 2 in a Box	\$88.00
CHC-01	Charred Series Chunk	\$24.00
WCRD-1	Wood Chip Ring	\$34.00
BR-2	9" Oak Branches (2 in a box)	\$38.00
CHA-1	Charred Accessory Kit 4 pc.	\$60.00
BR-17	17" Oak Branch	\$46.00



**BDC-4
Charred Branches**



**WCRD-1
Wood Chip Ring**

Continued on next page

SOME BRANDS ARE ONLY AVAILABLE IN SELECTED AREAS, SEE MAP ON PAGE 4 OR CONTACT YOUR REGIONAL SALES MANGER FOR MORE INFO.

Pricing, model numbers and availability are subject to change without notice. Call for most current information.

Accessories for Vented Log Sets cont.

MODEL NUMBER	DESCRIPTION	LIST PRICE
Gas Log Burner Kit Accessories		
P-EM-1	Ember Glow, Single Pack 6 oz.	\$21.00
EM-1S	Super Embers (Includes Bryte Coals) 7 oz.	\$40.00
EM-11	Byrte Coals 2 oz.	\$24.00
EB-1	Black Ember, Single Pack 6 oz.	\$26.00
CS-10	Select White Sand - 10 lb. Bag	\$21.00
LF-15	Vermiculite Granules - 1.5 lb. Bag	\$24.00
LF-5	Lava-Fyre Granules - 5 lb. Bag	\$18.00
LF-10	Lava-Fyre Granules - 10 lb. Bag	\$29.00
LFC-10	Lava-Fyre Coals - 10 lb. Bag	\$34.00
VS-3	Lava-Fyre Volcanic Stones - 3 lb. Bag (while supplies last)	\$25.00
VS-12	Assorted Volcanic Stones - 12 lb. Box	\$50.00
VS-25	Assorted Volcanic Stones - 25 lb. Box	\$82.00



CS-10



LF-15



LF-10



WCDC-1

Additional Accessories

WCC-1	Wood Chip Crackler w/ Cover (while supplies last)	\$118.00
WCBC-1	Charred Birch Decorative Cover NEW	\$45.00
WCAB-1	Charred Birch Decorative Wood Chunk NEW	\$45.00
WCDC-1	Wood Chunk Decorative Cover	\$41.00
PCDC-1	Pine Cone Decorative Cover	\$41.00
WCEC-1	Valve Cover, Designer	\$50.00
CHEC-1	Valve Cover, Charred	\$50.00
LC-1	14" Cast Iron Gas Log Lighter, for NG only	\$69.00
FF-04-24	24" Cast Iron Fender	\$61.00



WCBC-1



WCAB-1

SOME BRANDS ARE ONLY AVAILABLE IN SELECTED AREAS, SEE MAP ON PAGE 4 OR CONTACT YOUR REGIONAL SALES MANGER FOR MORE INFO.

Pricing, model numbers and availability are subject to change without notice. Call for most current information.

❖ – Non Stock Special Order

Goldsboro (Best & Langston) Ph: 888-260-1900 Fax: 919-739-9920

Vented Glass Burners

MODEL NUMBER	DESCRIPTION	LIST PRICE
G22 Series ANSI Certified Burner System - Vented		
G22-GL-18-01P	18" Vented Glass Burner w/ Remote and Connector Kit, 28,000 btu - LP	\$1,182.00
G22-GL-18-01N	18" Vented Glass Burner w/ Remote and Connector Kit, 45,000 btu - NG	\$1,182.00
G22-GL-24-01P	24" Vented Glass Burner w/ Remote and Connector Kit, 40,000 btu - LP	\$1,261.00
G22-GL-24-01N	24" Vented Glass Burner w/ Remote and Connector Kit, 55,000 btu - NG	\$1,261.00
G22-GL-30-01P	30" Vented Glass Burner w/ Remote and Connector Kit, 50,000 btu - LP	\$1,359.00
G22-GL-30-01N	30" Vented Glass Burner w/ Remote and Connector Kit, 65,000 btu - NG	\$1,359.00

NOTE: USE G22-GL-XX-02X WHEN 01 BURNERS ARE DEPLETED.

G45 Series ANSI Certified Glass Burner System – Vented

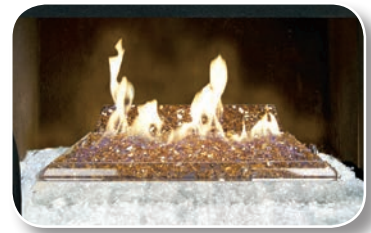
G45-GL-18/20-17N	18" Vented Glass Burner w/ Variable Remote, 70,000 btu - NG	\$698.00
G45-GL-24-11N	24" Vented Glass Burner w/ On/Off Remote, 90,000 btu - NG	\$782.00
G45-GL-24-15N	24" Vented Glass Burner w/ Variable Remote, 90,000 btu - NG	\$831.00

G45 Triple T Glass Burner – Vented – No Valve

G45-GL-18N ❖	18" Vented Glass Burner w/ No Valve, 70,000 btu - NG	\$222.00
G45-GL-24N ❖	24" Vented Glass Burner w/ No Valve, 90,000 btu - NG	\$240.00

NOTE:

- 18" BURNER TAKES 10 LBS OF GLASS
- 24" BURNER TAKES 12 1/2 LBS OF GLASS
- 30" BURNER TAKES 15 LBS OF GLASS



G22-GL

G22 Features:

- All Stainless Steel Construction
- Extra High, Extra Deep Flame Appearance
- Ideal for Indoor or Outdoor Use
- Automatic Pilot with Remote for Easy ON/OFF Control
- Glass sits directly on burner, can't use diamond nuggets



G45-GL

G45 Features:

- Multi Burner Design, Fills the Fireplace with Flame
- Available in Sizes 16 to 60 Inches
- Available in See Thru Models
- Compatible with All RHP Control Systems

SOME BRANDS ARE ONLY AVAILABLE IN SELECTED AREAS, SEE MAP ON PAGE 4 OR CONTACT YOUR REGIONAL SALES MANGER FOR MORE INFO.

Pricing, model numbers and availability are subject to change without notice. Call for most current information.

Glass Media

MODEL NUMBER	DESCRIPTION	LIST PRICE
Fyre Glass - 10# Bag		
GL-10-B	Black Glass 10# Bag	\$74.00
GL-10-Z	Bronze Glass 10# Bag	\$74.00
GL-10-C	Clear Glass 10# Bag	\$74.00
GL-10-F	Azuria Glass 10# Bag	\$74.00
GL-10-W	Star Fyre Glass 10# Bag	\$74.00
GL-10-N	Caribbean Blue Glass 10# Bag	\$74.00



Emerald Glass

Reflective Fyre Glass - 10# Bag

GL-10-FR	Azuria Reflective Glass 10# Bag	\$81.00
GL-10-BR	Black Reflective Glass 10# Bag	\$81.00
GL-10-ZR	Bronze Reflective Glass 10# Bag	\$81.00
GL-10-ER	Emerald Reflective Glass 10# Bag	\$81.00
GL-10-HR	Gold Reflective Glass 10# Bag	\$81.00
GL-10-QR	Copper Reflective Glass 10# Bag	\$81.00
GL-10-NR	Caribbean Reflective Glass 10# Bag	\$81.00
GL-10-CR	Champagne Reflective Glass 10# Bag	\$81.00



Bronze Glass

Reflective Fyre Glass - 10# Jar

GL-10J-BR	Black Reflective Glass 10# Jar	\$87.00
GL-10J-HR	Gold Reflective Glass 10# Jar	\$87.00
GL-10J-QR ❖	Copper Reflective Glass 10# Jar	\$87.00
GL-10J-ZR ❖	Bronze Reflective Glass 10# Jar	\$87.00



Azuria Reflective Glass

Reflective Fyre Glass - 40# Bucket

GL-40-BR	Black Reflective Glass 40# Bucket	\$320.00
GL-40-HR	Gold Reflective Glass 40# Bucket	\$320.00
GL-40-QR	Copper Reflective Glass 40# Bucket	\$320.00
GL-40-ZR	Bronze Reflective Glass 40# Bucket	\$320.00
GL-40-CR	Champagne Reflective Glass 40# Bucket	\$320.00



Gold Reflective Glass

Continued on next page

Glass Media cont.

MODEL NUMBER	DESCRIPTION	LIST PRICE
Fyre Gems - 10# Bag		
GLG-10-B	Black Granite Gems 10# Bag	\$64.00
GLG-10-T	Blue Topaz Gems 10# Bag	\$64.00
GLG-10-A	Deep Amber Gems 10# Bag	\$64.00
GLG-10-C	Glacier Gems 10# Bag	\$64.00
GLG-10-J	Black Pearl Gems 10# Bag	\$64.00
GLG-10-D	Champagne Gems 10# Bag	\$64.00
GLG-10-S	Sapphire Gems 10# Bag	\$64.00



Black Granite Gems



Blue Topaz Gems

Diamond Nuggets - 10# Bag		
GLD-10-C	Clear Nuggets 10# Bag	\$72.00
GLD-10-BL	Black Luster 10# Bag	\$72.00

River Rock Fyre Stones - Set of 10		
STN-10	Assorted Color River Rock	\$107.00
STN-10I	Ivory Color River Rock	\$107.00
STN-10S	Slate Color River Rock	\$107.00
STN-20	Assorted Designer River Rock Fyre Stones	\$249.00



Clear Nuggets



STN-10



STN-10S



STN-20

SOME BRANDS ARE ONLY AVAILABLE IN SELECTED AREAS, SEE MAP ON PAGE 4 OR CONTACT YOUR REGIONAL SALES MANGER FOR MORE INFO.

Pricing, model numbers and availability are subject to change without notice. Call for most current information.

RealFyre Gas Log Sets

MINIMUM FIREBOX DIMENSIONS

	FRONT WIDTH	REAR WIDTH	DEPTH	HEIGHT
Vented Logs - ANSI Certified Burner Assemblies				
G45-16	29"	23"	11"	18"
G45-24	34"	28"	14"	18"
G45-30	40"	34"	15"	18"
G45-36	46"	40"	16"	18"
G46-18/20	26"	20"	15"	18"
G46-24	30"	24"	15"	18"
G46-30	36"	28"	15"	18"
G52-18/20	26"	20"	15"	16"
G52-24	32"	24"	15"	16"
G52-30	34"	28"	15"	16"
G52-18/20-2VT	26"	20"	15"	16"
G52-24-2VT	32"	24"	15"	16"
G52-30-2VT	34"	28"	15"	16"
G31-18/20	25"	20"	15"	16"
G31-24	35"	25"	15"	16"
G31-30	39"	28"	15"	16"
G31-33	44"	32"	15"	16"
G31-39	47"	32"	15"	16"
G31-18/20, 2VT	25"	22"	15"	16"
G31-24, 2VT	35"	27"	15"	16"
G31-30, 2VT	39"	28"	15"	16"
G31-33, 2VT	44"	32"	15"	16"
G31-39, 2VT	47"	32"	15"	16"
*Vented Logs - RADCO				
G4-18/20	24"	20"	13"	17"
G4-24	28"	24"	13"	17"
G4-30	34"	30"	14"	17"
Glass Burners				
G45-GL-18	30"	24"	12"	18"
G45-GL-24	34"	28"	12"	18"
G45-GL-30	40"	34"	12"	18"
G22-GL-18	27"	19"	13"	17"
G22-GL-24	33"	25"	13"	17"
G22-GL-30	39"	32"	13"	17"

***ADD 4" TO FRONT WIDTH IF THE BURNER IS TO BE INSTALLED W/ A PILOT SAFETY KIT (SPK). ADD 12" FOR AUTOMATIC PILOT KIT (APK).**

SOME BRANDS ARE ONLY AVAILABLE IN SELECTED AREAS, SEE MAP ON PAGE 4 OR CONTACT YOUR REGIONAL SALES MANGER FOR MORE INFO.

Pricing, model numbers and availability are subject to change without notice. Call for most current information.

❖ – Non Stock Special Order

Goldsboro (Best & Langston) Ph: 888-260-1900 Fax: 919-739-9920