

The Rinnai logo is located in the top right corner of the page. It consists of the word "Rinnai" in a white, bold, sans-serif font, set against a solid red rectangular background.

# 2019

## Suggested List Price (USD)

### Venting Products for Tankless Water Heaters and Boilers

Effective Date 02/15/2019



## Installation Venting Components for Use with SE+, SE, HE+ (Condensing & Non-Condensing), Commercial Tankless Water Heaters & Boilers

Product ID	Product Description	List Price (U.S.)
146141	Roof Flashing Assembly Flat	\$44
169044	Pipe Clamp Universal Plastic	\$8
189950	Shingle Roof Flashing, 1/12 to 6/12 pitch	\$78
189951	Shingle Roof Flashing, 6/12 to 12/12 pitch	\$78
189952	Shingle Roof Flashing, 8/12 to 16/12 pitch	\$78
222053	Condensate Trap, Version II	\$53
224042	Universal Bug Guard	\$143
224045	3 in. / 5 in. Thimble (1 piece per box)	\$64
224049	3 in. / 5 in. Vent Support Bracket	\$47
242141	Flashing for Metal Roof	\$150
710342	3 in. / 5 in. Rubber Wall Plate White	\$8
710602	3 in. / 5 in. Rubber Wall Plate Black	\$8
50171949	Tile/Shingle Roof Flashing, 1/12 to 6/12	\$86
50171954	Tile/Shingle Flashing, 8/12 to 16/12	\$86
50171961	Tile/Shingle Flashing, 6/12 to 12/12	\$86
102000012	3 in. / 5 in. Horizontal Flashing Panel	\$15
222716	2 in. Pipe Clamp Plastic (Qty 10) (SENSEI™ SE+ ONLY)	\$31
224055	2 in. / 4 in. Thimble (SENSEI™ SE+ ONLY)	\$57
710265	2 in. / 4 in. Rubber Wall Plate White (SENSEI™ SE+ ONLY)	\$7
710192	2 in. / 4 in. Rubber Wall Plate Black (SENSEI™ SE+ ONLY)	\$7
169013	2 in. / 4 in. Pipe Clamp Metal (SENSEI™ SE+ ONLY)	\$7
224056	2 in. / 4 in. Vent Support Bracket (SENSEI™ SE+ ONLY)	\$43
169043	3 in. / 5 in. Pipe Clamp Metal (SENSEI™ SE+ ONLY)	\$8



## Installation Venting Components for Use with HE+ (Former Luxury) and HE (Former Value) Series Tankless Water Heaters (Non-Condensing)

<b>Concentric Venting Termination &amp; Termination Kits for Use with HE+ and HE Series Tankless Water Heaters (Non-Condensing)</b>		
<b>Product ID</b>	<b>Product Description</b>	<b>List Price (U.S.)</b>
184127	Roof Discharge Termination 18 in. (above roof)	\$138
224046	Raised Horizontal Termination Kit ("Snorkel")	\$600
223191	8.7 in. Universal Non-Condensing Horizontal Termination Kit	\$100
223181	11.5 in. Universal Non-Condensing Horizontal Termination Kit	\$125
223183	11.5 in. Universal Non-Condensing Horizontal Termination	\$68
223182	21 in. Universal Non-Condensing Horizontal Termination Kit	\$132
223184	21 in. Universal Non-Condensing Horizontal Termination	\$76
223187	21 in. Non-Condensing Horizontal Termination Diverter Kit Termination for Minimal Clearance	\$132
185342	Roof Termination Ext Kit	\$77
224054	Telescoping Vent Length	\$66
184119	Roof Discharge Termination 38 in. (above roof); cold climate	\$160
223188	12 in. Universal Termination Metal Kit	\$150
<b>Concentric Venting Elbow Components for Use with HE+ and HE Series Tankless Water Heaters (Non-Condensing)</b>		
224063	90 Degree Elbow	\$57
224050	45 Degree Elbow (Qty of 2)	\$78
224255	90 Degree Elbow (Metal)	\$66
224250	45° Elbow (Metal)	\$94
<b>Concentric Venting Vent Pipe Extensions for Use with HE+ and HE Series Tankless Water Heaters (Non-Condensing)</b>		
224051	10 in. Vent Pipe Extension	\$45
224052	19.5 in. Vent Pipe Extension	\$64
224053	39 in. Vent Pipe Extension	\$70
224260	10 in. Vent Pipe Extension (Metal)	\$57
224265	19.5 in. Vent Pipe Extension (Metal)	\$76
224270	39 in. Vent Pipe Extension (Metal)	\$87
<b>Installation Accessories for Use with HE+ and HE Series Tankless Water Heaters (Non-Condensing)</b>		
222053	Condensate Trap	\$53
224245	Condensate Collector	\$85



## 3 in. / 5 in. Installation Venting Components for Use with SE+ and SE Tankless Water Heaters (Condensing) and M, E, Q Series Boilers

Product ID	Product Description	List Price (U.S.)
184162PP	3 in. / 5 in. Condensing Roof Discharge Termination 20in Above Roof	\$99
185344PP	3 in. / 5 in. Roof Termination Extension Kit	\$77
185346PP	3 in. / 5 in. Condensing Termination Extension	\$90
185347PP	Separation Kit	\$31
187585PP	Twin Pipe Adapter for use w/ PVC/CPVC (Special Order Only)	\$66
223174PP	3 in. / 5 in. Condensing Horizontal Term Kit 8.7 in.	\$92
223176PP	3 in. / 5 in. Condensing Horizontal Term Kit 12 in.	\$99
223177PP	3 in. / 5 in. Condensing Horizontal Term Kit 21 in.	\$103
223186PP	3 in. / 5 in. Condensing Horizontal Term Diverter Kit 19 in.	\$110
224047PP	3 in. / 5 in. Condensing Raised Horiz Term Kit Snorkel	\$418
224077PP	3 in. / 5 in. Condensing 45 Degree Elbow (Qty 2)	\$55
224078PP	3 in. / 5 in. Condensing 90 Degree Vent Pipe Elbow	\$40
224079PP	3 in. / 5 in. Condensing Vent Pipe Extension 19.5 in.	\$44
224080PP	3 in. / 5 in. Condensing Vent Pipe Extension 39 in.	\$52
224087PP	3 in. / 5 in. Condensing Vent Pipe Extension 10 in.	\$35
196116PVC	3 in. Concentric PVC	\$96
196985PVC	3 in. Low Profile PVC	\$30

**NOTES:**

- Warranty may change depending on application and use. For complete warranty details, visit [rinnai.us/warranty](http://rinnai.us/warranty) or call 1-800-621-9419.
- "PP" at the end of the part number signifies Polypropylene venting components for use with SE and SE+ Condensing Tankless Water Heaters and Condensing Gas Boilers (M, E, Q Series)

Rinnai is continually updating and improving products; therefore, specifications and pricing are subject to change without prior notice. Local, state, provincial and federal and national fuel gas codes must be adhered to prior to installation. FOB Rinnai Georgia, Nevada and Pennsylvania.



## 2 in. / 4 in. Installation Venting Components for Use with SENSEI™ SE+ Tankless Water Heaters (Condensing) and M-Series Boilers

SENSEI™ Tankless Models		M-Series Condensing Boilers		
RU130	RU199	M060SN	M160SN	M120CN
RU160	RUR160	M090SN	M060CN	M160CN
RU180	RUR199	M120SN	M090CN	
CU160	CU199			

Product ID	Product Description	List Price (U.S.)
222710NPP	2 in. Condensing 45 Degree Elbow (20/Box)	\$9
222711NPP	2 in. Condensing 90 Degree Elbow (20/Box)	\$11
222712NPP	2 in. Condensing Vent Pipe Extension 39 in. (4/Box)	\$77
222714NPP	2 in. Condensing Vent Pipe Extension 79 in. (4/Box)	\$105
222715NPP	2 in. Condensing Fixing Clip Metal (Qty 10)	\$33
184470NPP	2 in. Condensing Flex Termination Kit	\$253
222720NPP	2 in. Flex Connector	\$26
222721NPP	2 in. Flex Roll (41.5 ft.)	\$330
223085NPP	2 in. Condensing Wall Terminal Twin Pipe	\$88
187595NPP	2 in. x 2 in. / 4 in. Condensing Twin Pipe Adaptor	\$83
710202NPP	2 in. / 4 in. Condensing 90 Degree Diverter Nose	\$19
710215NPP	2 in. / 4 in. Condensing 45 Degree Diverter Nose	\$13
229011NPP	2 in. / 4 in. Condensing Horizontal Termination Kit 8.7 in.	\$83
229012NPP	2 in. / 4 in. Condensing Horizontal Termination Kit 12 in.	\$88
229013NPP	2 in. / 4 in. Condensing Horizontal Termination Kit 21 in.	\$92
229016NPP	2 in. / 4 in. Condensing 21 in. Wall Term (2 wall plates)	\$61
224356NPP	2 in. / 4 in. Condensing Roof Discharge Term 20 in. Above Roof	\$88
229205NPP	2 in. / 4 in. Condensing 45 Degree Elbow Qty 2	\$50
229230NPP	2 in. / 4 in. (60/100) Condensing 90 Degree Elbow	\$35
229253NPP	2 in. / 4 in. Condensing Horizontal Starter Adapter	\$39
229308NPP	2 in. / 4 in. Condensing Vent Pipe Extension 10 in.	\$32
229309NPP	2 in. / 4 in. Condensing Vent Pipe Extension 19.5 in.	\$40
229310NPP	2 in. / 4 in. Condensing Vent Pipe Extension 39 in.	\$46
227412NPP	2 in. / 4 in. Condensing Vertical Starter Adapter	\$50
185348NPP	2 in. / 4 in. Condensing Roof Term Extension Kit	\$69
196005PVC	IPEX 2 in. Concentric Termination 2 x 16	\$87
196105PVC	IPEX 2 in. Concentric Termination 2 x 28	\$96
196125PVC	IPEX 2 in. Concentric Termination 2 x 40	\$106
196984PVC	IPEX PVC Low Profile Termination 2 in.	\$30

**NOTES:**

- Warranty may change depending on application and use. For complete warranty details, visit [rinnai.us/warranty](http://rinnai.us/warranty) or call 1-800-621-9419.
- \* "NPP" signifies Polypropylene venting components for use with the NEW Rinnai SENSEI™ Condensing Tankless Water Heaters and M-Series Condensing Gas Boilers.

Rinnai is continually updating and improving products; therefore, specifications and pricing are subject to change without prior notice. Local, state, provincial and federal and national fuel gas codes must be adhered to prior to installation. FOB Rinnai Georgia, Nevada and Pennsylvania.

## Ubbink Vent Components - Concentric Non-Condensing

- For concentric venting, non-condensing models.
- Current water heater models incorporate a condensate collector and do not require an “adapter” vent component. (For models manufactured prior to 2008 a separate condensate collector is available)
- Plastic vent components consist of an outer plastic vent for the air intake (ø5”) and an inner metal vent for the exhaust gases (ø3”). Metal vent components consist of metal inner and outer vents.
- Plastic and metal vent components are completely interchangeable.

Refer to the Rinnai installation manual and the Ubbink installation instructions for complete installation details and requirements.

PLASTIC VENT COMPONENTS (Plastic Outer Pipe, Metal Inner Pipe)																							
<p>Universal Non-Condensing Termination Kit</p>		<p>Roof Termination Extension Kit Part No.: 185342</p>	<p>Roof Discharge Termination 38" (Cold Climate) Part No.: 184119</p>																				
<table border="1"> <thead> <tr> <th colspan="2">Termination Kit (termination, elbow, rubber wall plates)</th> <th colspan="2">Termination Only</th> </tr> <tr> <th>Length "L"</th> <th>Part Number</th> <th>Length "L"</th> <th>Part Number</th> </tr> </thead> <tbody> <tr> <td>8.7"</td> <td>223191</td> <td></td> <td></td> </tr> <tr> <td>11.5"</td> <td>223181</td> <td>11.5"</td> <td>223183</td> </tr> <tr> <td>21"</td> <td>223182</td> <td>21"</td> <td>223184</td> </tr> </tbody> </table>		Termination Kit (termination, elbow, rubber wall plates)		Termination Only		Length "L"	Part Number	Length "L"	Part Number	8.7"	223191			11.5"	223181	11.5"	223183	21"	223182	21"	223184	<p>Roof Discharge Termination 18" Part No.: 184118-S</p>	
Termination Kit (termination, elbow, rubber wall plates)		Termination Only																					
Length "L"	Part Number	Length "L"	Part Number																				
8.7"	223191																						
11.5"	223181	11.5"	223183																				
21"	223182	21"	223184																				
<p>(21" Non-Condensing Horizontal Termination Diverter Kit) Part No.: 223187</p>		<p>Rubber Wall Plate Part No.: 710342 (White) Part No.: 710602 (Black)</p>																					
<p>Vent Pipe Extension</p> <table border="1"> <thead> <tr> <th>Length "L"</th> <th>Part Number</th> </tr> </thead> <tbody> <tr> <td>10"</td> <td>224051</td> </tr> <tr> <td>19.5"</td> <td>224052</td> </tr> <tr> <td>39"</td> <td>224053</td> </tr> </tbody> </table>		Length "L"	Part Number	10"	224051	19.5"	224052	39"	224053	<p>Telescoping Vent Length Part No.: 224054</p>													
Length "L"	Part Number																						
10"	224051																						
19.5"	224052																						
39"	224053																						
<p>45 Degree Elbow Part No.: 224050</p>		<p>90 Degree Elbow Part No.: 224063</p>	<p>Condensate Collector Part No.: 224069</p>																				
<p>Effective Length 2.2-12 Inches</p>																							

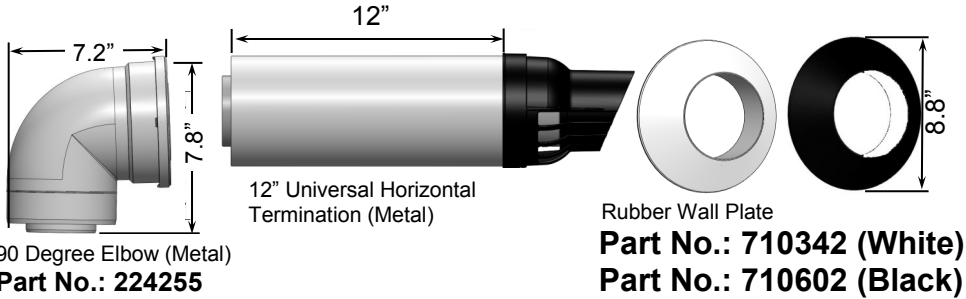
## Ubbink Vent Components - Concentric Non-Condensing

### METAL VENT COMPONENTS

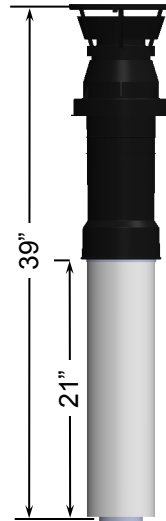
(Metal Outer Pipe, Metal Inner Pipe)

### Universal Termination Kit (Metal)

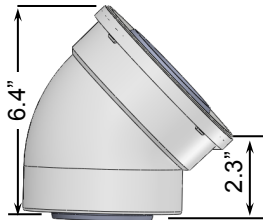
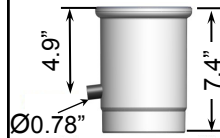
Part No.: 223188



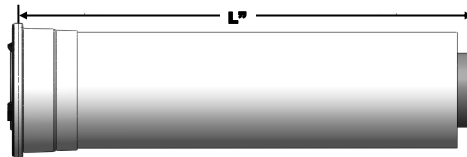
Roof Termination (Metal)  
Part No.: 184127



Condensate Collector (Metal)  
Part No.: 224245



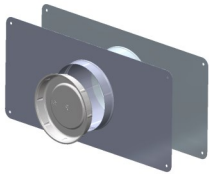
45 Degree Elbow (Metal)  
Part No.: 224250



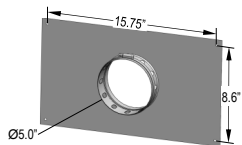
Length "L"	Part Number
10"	224260
19.5"	224265
39"	224270

Thimble  
Part No.: 224045

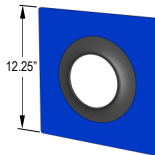
\*Fits 2x4 or 2x6  
Wall Construction



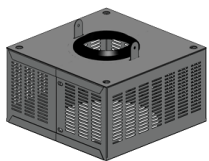
Vent Support Bracket  
Part No.: 224049



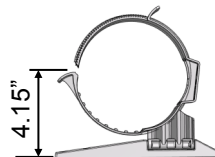
Horizontal—Flashing Panel  
Part No.: 102000012



Universal Bug Guard  
Part No.: 224042



Pipe Clamp  
Part No.: 169044



Roof Flashing

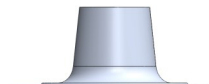


Roof Pitch	Part No. for Shingle Roofs	Part No. for Tile Roofs
1/12 to 6/12	189950	50171949
6/12 to 12/12	189951	50171961
8/12 to 16/12	189952	50171954

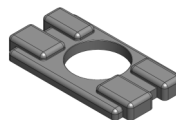
Condensate Trap  
Part No.: 222053



Roof Flashing—Flat  
Part No.: 146141



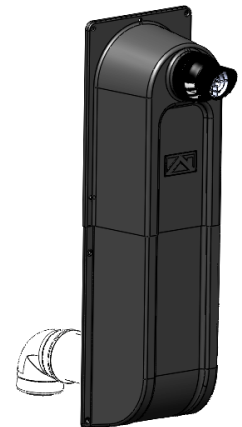
NSF Cover  
Part No.: 224040



Flashing for Metal Roof  
Part No.: 242141



Raised Horizontal Termination Kit "Snorkel"  
Part No.: 224046



Kit Includes:  
14.2" Vent Extension, Qty 3-90° Elbow, 19.5" Vent pipe extension, Special wall terminal, Cover.

## Ø2/4" (60/100) Ubbink Vent Components

- For use with the following models: RU199i (REU-N3237FF-US), RU180i (REU-N2934FF-US), RU160i (REU-N2530FF-US), RU130i (REU-N2024FF-US), RUR199i (REU-NP3237FF-US), RUR160i (REU-NP2530FF-US), CU199i (REU-N3237FFC-US), CU160i (REU-N2530FFC-US).
- Do not combine the vent components illustrated on this page with any other vent components.
- Material of Inner/Exhaust - Polypropylene.
- Material of Outer/Combustion Air - Plastic.
- Vent components consist of an outer plastic vent for air intake Ø4 in. (100 mm) and an inner polypropylene vent for the exhaust gases Ø2 in. (60 mm).

Refer to the Rinnai Water Heater Installation and Operation manual for complete installation details and requirements.

Rinnai is continually updating and improving products; therefore, specifications are subject to change without prior notice. Local, state, provincial and federal codes must be adhered to prior to installation.

### (PPs) POLYPROPYLENE VENT COMPONENTS

<p>2/4 (60/100) Condensing Roof Discharge Termination 20" above Roof Part #: 224356NPP</p>	<p>2/4 (60/100) Condensing Roof Termination Extension Kit Part #: 185348NPP</p>	<p>2/4 (60/100) Condensing Horizontal Termination Kit (termination, elbow, rubber wall plates)</p> <table border="1"> <thead> <tr> <th>Maximum wall thickness "L"</th> <th>Part Number</th> </tr> </thead> <tbody> <tr> <td>8.7" (221 mm)</td> <td>229011NPP</td> </tr> <tr> <td>12" (305 mm)</td> <td>229012NPP</td> </tr> <tr> <td>21" (533 mm)</td> <td>229013NPP</td> </tr> </tbody> </table>	Maximum wall thickness "L"	Part Number	8.7" (221 mm)	229011NPP	12" (305 mm)	229012NPP	21" (533 mm)	229013NPP	<p>2/4 (60/100) Condensing 90 Degree Diverter Nose Part #: 710202NPP</p>	<p>2/4 (60/100) Condensing 45 Degree Diverter Nose Part #: 710215NPP</p>				
Maximum wall thickness "L"	Part Number															
8.7" (221 mm)	229011NPP															
12" (305 mm)	229012NPP															
21" (533 mm)	229013NPP															
<p>2/4 (60/100) Thimble Part #: 224055</p> <p>Fits 2x4 or 2x6 Wall Construction</p>	<p>2/4 (60/100) Rubber Wall Plate Part #: 710265 (White) Part #: 710192 (Black)</p>	<p>2/4 (60/100) Condensing 21 in. Wall Termination (includes 2 wall plates) Part #: 229016NPP</p> <table border="1"> <thead> <tr> <th>Length "L"</th> <th>Part Number</th> </tr> </thead> <tbody> <tr> <td>10" (254 mm)</td> <td>229308NPP</td> </tr> <tr> <td>19.5" (240 mm)</td> <td>229309NPP</td> </tr> <tr> <td>39" (991 mm)</td> <td>229310NPP</td> </tr> </tbody> </table>	Length "L"	Part Number	10" (254 mm)	229308NPP	19.5" (240 mm)	229309NPP	39" (991 mm)	229310NPP	<p>2/4 (60/100) Condensing Vertical Starter Adapter Part #: 227412NPP</p>	<p>2/4 (60/100) Condensing Horizontal Starter Adapter Part #: 229253NPP</p>				
Length "L"	Part Number															
10" (254 mm)	229308NPP															
19.5" (240 mm)	229309NPP															
39" (991 mm)	229310NPP															
<p>2/4 (60/100) Condensing 90 Degree Elbow Part #: 229230NPP</p>	<p>2/4 (60/100) Condensing 45 Degree Elbow (Qty. 2) Part #: 229205NPP</p>	<p>2/4 (60/100) Condensing Vent Pipe Extension</p>	<p>2/4 (60/100) Condensing 90 Degree Elbow Part #: 229230NPP</p>	<p>2/4 (60/100) Condensing 45 Degree Elbow (Qty. 2) Part #: 229205NPP</p>												
<p>2/4 (60/100) Pipe Clamp Metal Part #: 169013</p>	<p>2/4 (60/100) Vent Support Bracket Part #: 224056</p>	<p>Roof Flashing*</p> <table border="1"> <thead> <tr> <th>Roof Pitch</th> <th>Part No. Shingle Roofs</th> <th>Part No. Tile Roofs</th> </tr> </thead> <tbody> <tr> <td>1/12 to 6/12</td> <td>189950</td> <td>50171949</td> </tr> <tr> <td>6/12 to 12/12</td> <td>189951</td> <td>50171961</td> </tr> <tr> <td>8/12 to 16/12</td> <td>189952</td> <td>50171954</td> </tr> </tbody> </table>	Roof Pitch	Part No. Shingle Roofs	Part No. Tile Roofs	1/12 to 6/12	189950	50171949	6/12 to 12/12	189951	50171961	8/12 to 16/12	189952	50171954	<p>Roof Flashing Assembly- Flat* Part #: 146141</p>	<p>Universal Bug Guard* Part #: 224042</p>
Roof Pitch	Part No. Shingle Roofs	Part No. Tile Roofs														
1/12 to 6/12	189950	50171949														
6/12 to 12/12	189951	50171961														
8/12 to 16/12	189952	50171954														
<p>Pipe Clamp Universal Plastic* Part #: 169044</p>	<p>2/4 (60/100) Horizontal—Flashing Panel Part #: 10200022</p>	<p>Flashing for Metal Roof* Part #: 242141</p>	<p>Flashing for Metal Roof* Part #: 242141</p>	<p>*Components are universal for use with 2/4(60/100) and 3/5 (80-125) components.</p>												



## Ø3/5 (80/125) Ubbink Vent Components

- For use on Rinnai CONDENSING water heaters only.
- Do not combine the vent components illustrated on this page with any other vent components.
- Material of Inner/Exhaust - Polypropylene, Flame Retardant (ULC S636 Gas Vent-BH Class IIC 110°C/230°F)
- Material of Outer/Combustion Air - Plastic.
- Vent components consist of an outer plastic vent for air intake Ø5 in. (80 mm) and an inner polypropylene vent for the exhaust gases Ø3 in. (125 mm).

Refer to the Rinnai Water Heater Installation and Operation manual for complete installation details and requirements.

Rinnai is continually updating and improving products; therefore, specifications are subject to change without prior notice. Local, state, provincial and federal codes must be adhered to prior to installation.

### (PPs) POLYPROPYLENE VENT COMPONENTS

<p>3/5 (80/125) Condensing Roof Discharge Termination 20" above Roof Part #: 184162PP</p>	<p>3/5 (80/125) Roof Termination Extension Kit Part #: 185344PP</p>	<p>3/5 (80/125) Condensing Horizontal Termination Kit (termination, elbow, rubber wall plates) Part #: 223174PP, 223176PP, 223177PP</p> <table border="1"> <thead> <tr> <th>Maximum Wall thickness "L"</th> <th>Part Number</th> </tr> </thead> <tbody> <tr> <td>8.7" (221 mm)</td> <td>223174PP</td> </tr> <tr> <td>12" (305 mm)</td> <td>223176PP</td> </tr> <tr> <td>21" (533 mm)</td> <td>223177PP</td> </tr> </tbody> </table>	Maximum Wall thickness "L"	Part Number	8.7" (221 mm)	223174PP	12" (305 mm)	223176PP	21" (533 mm)	223177PP	<p>3/5 (80/125) Condensing Raised Horizontal Termination Kit "Snorkel" Part #: 224047PP</p> <p>Kit Includes:</p> <ul style="list-style-type: none"> <li>• 14.2" (361mm) Vent Extension (Qty. 3)</li> <li>• 90° Elbow</li> <li>• 19.5" (495mm) Vent Pipe Extension</li> <li>• Special wall terminal</li> <li>• Cover</li> </ul>	<p>3/5 (80/125) Condensing Roof Discharge Termination 25" (635 mm) above Roof Part #: 184228PP (for 6" B-Vent Flashing)</p>				
Maximum Wall thickness "L"	Part Number															
8.7" (221 mm)	223174PP															
12" (305 mm)	223176PP															
21" (533 mm)	223177PP															
<p>3/5 (80/125) Thimble Part #: 224045</p> <p>*Fits 2x4 or 2x6 Wall Construction</p>	<p>3/5 (80/125) Rubber Wall Plate Part No.: 710342(White) Part No.: 710602 (Black)</p>	<p>3/5 (80/125) Condensing Horizontal Termination Diverter Kit 19" (483 mm) Part #: 223186PP</p>	<p>3/5 (80/125) Condensing 45 Degree Elbow (Qty. 2) Part #: 224077PP</p>	<p>3/5 (80/125) Condensing 90 Degree Elbow Part #: 224078PP</p>												
<p>3/5 (80/125) Pipe Clamp Metal Part #: 169043</p>	<p>3/5 (80/125) Vent Support Bracket Part #: 224049</p>	<p>Roof Flashing*</p>	<p>Roof Flashing Assembly- Flat* Part #: 146141</p>	<p>Universal Bug Guard* Part #: 224042</p>												
<p>Pipe Clamp Universal Plastic* Part #: 169044</p>	<p>3/5 (80/125) Horizontal—Flashing Panel Part #: 102000012</p>	<table border="1"> <thead> <tr> <th>Roof Pitch</th> <th>Part No. Shingle Roofs</th> <th>Part No. Tile Roofs</th> </tr> </thead> <tbody> <tr> <td>1/12 to 6/12</td> <td>189950</td> <td>50171949</td> </tr> <tr> <td>6/12 to 12/12</td> <td>189951</td> <td>50171961</td> </tr> <tr> <td>8/12 to 16/12</td> <td>189952</td> <td>50171954</td> </tr> </tbody> </table>	Roof Pitch	Part No. Shingle Roofs	Part No. Tile Roofs	1/12 to 6/12	189950	50171949	6/12 to 12/12	189951	50171961	8/12 to 16/12	189952	50171954	<p>Flashing for Metal Roof* Part #: 242141</p>	<p>*Components are universal for use with 2/4(50/100) and 3/5 (80/125) components.</p>
Roof Pitch	Part No. Shingle Roofs	Part No. Tile Roofs														
1/12 to 6/12	189950	50171949														
6/12 to 12/12	189951	50171961														
8/12 to 16/12	189952	50171954														