

Heating Essentials 2020-2021




rmi
RAY MURRAY, INC.

www.RAYMURRAY.com

800-628-5044

OUR DEDICATED TEAM

PRINCIPAL OWNERS

Ray Murray Inc. is dedicated to proactively participating in the growth of:

- Our Customers' businesses
- The Propane, Hearth, Heating, Outdoor Living and Energy Industries
- Our Team and each Team member

We recognize that advancements in all three areas are critical to our company's success. Dedication and creativity of our loyal employees, many with over 20 years of service create the core of our achievements toward these goals.



Clockwise from top left: Jim, Ray III & John Murray, Mike & Jeff Hopsicker

PRODUCT MANAGEMENT, PURCHASING & TECHNICAL SERVICES



RMI - Product Management

From left: Jim Wiltshire, Mark Jenny
Bottom: John Murray, Linsey Fluty



RMI - Materials Purchasing

From left: Brenda Curry, Nick Ide
Inset: Tina Edwards



RMI - Technical Services

From left: Chris Wolfe, Geoff Barstow
Inset: Keith Szczepanski



CUSTOMER SERVICE



RMI - Lee, MA

Clockwise from back left: Burt Ball, Fran Zerbato, Tony Viola, Lynne Frederick, Jeff Heller, Debbie Brazie



RMI - Bensalem, PA

From left: Lisa Rhodes, Tom Helt



RMI - Flint, MI

From left: Nicole Finley, Darla Bussinger, Stacey Tewksbury



RMI - Goldsboro, NC

From left: Shawn Moore, Leigh Howell, Daniella Gardino

OUR DEDICATED TEAM

SALES



Casey Harvey
RMI Director of Sales



Cassandra Barry



Ben Brewer



Philip Briggs



Chris Cameron



Walter Carroll



Greg Dengler



Shaun Huggins



Woody Marcus



Kirk Meloney



Michael McFadden



Chris Newkirk



Paul Schwartz



Steve Steller



Andrew Vogl



Kevin Bayley

WAREHOUSE



RMI - Lee, MA

From left: Mark Cardillo, Rob Caffrey, Vinnie Cardillo, Chris Prior, Bruce Miner, Jason Hubbard, Joe Burke



RMI - Bensalem, PA

From left: Jesse Roman, Dave Acevedo, Hank Siffel, Beverly Wagner



RMI - Flint, MI

From left: Matt Crawford, Doug Tabor, Jim McIntyre, Ron McCullough

ADMINISTRATIVE SERVICES



RMI - Goldsboro, NC

From left: Kevin McRae, Chuck Long, James Cox, Calvin Jackson,



RMI - Lee, MA

Clockwise from left: Keith Ives, Rick Maxstadt, Thao Le, Kate Reynolds, Scott Porter, Chris Clark, Gabrielle Vanderpool, Kim Lindsay & Kathy Consolati
Inset: Debbie Ward



RMI - Goldsboro, NC

From left: Karen Wellman, Jimmy Doss, Wanda Long, Ginny Lyon



RMI Management Team Contacts

Name	Title	Email	Phone
Michael Hopsicker	President & CEO	mhopsicker@raymurray.com	413-243-9501
Casey Harvey	Director of Sales	charvey@raymurray.com	443-506-9717
Rick Maxstadt	Chief Financial Officer	rmaxstadt@raymurray.com	413-243-9505
Kathy Consolati	Director of Administrative Services	kconsolati@raymurray.com	413-243-9497
Linsey Fluty	Product Manager - Hearth & Grill	lfluty@raymurray.com	810-275-9212
Mark Jenny	Product Manager - Compressed Gas	mjenny@raymurray.com	413-243-9482
John Murray	Product Manager - LP Products Group	jemurray@raymurray.com	215-244-8308
Jim Wiltshire	Product Manager - LP Products Group	jwiltshire@raymurray.com	215-244-8310
Chris Wolfe	Manager - Technical Support	cwolfe@raymurray.com	413-243-9406

Regional Sales Manager Contacts

Sales Manager	Territory	Email	Cell Phone
Cassandra Barry	Propane Specialist - CT, MA, ME, NH, RI & VT	cbarry@raymurray.com	413-822-7222
Ben Brewer	Eastern North Carolina	bbrewer@bestandlangston.com	919-222-8351
Philip Briggs	KY, TN, WV, Western MD	pbriggs@bestandlangston.com	304-633-9508
Chris Cameron	Propane Specialist NJ, PA & Long Island	ccameron@raymurray.com	215-347-4232
Walter Carroll	Hearth & Grill Specialist - New Jersey & Pennsylvania	wcarroll@raymurray.com	413-464-6861
Greg Dengler	Florida, Alabama, Southern Georgia	gdengler@raymurray.com	267-374-1512
Shaun Huggins	Hearth & Grill Specialist - CT, MA, RI & E. NY	shuggins@raymurray.com	413-281-4864
Woody Markus	Ohio, Eastern Michigan	wmarkus@raymurray.com	419-345-1240
Kirk Meloney	Hearth & Grill Specialist - ME, NH & VT	kirk.meloney@outlook.com	603-387-2551
Michael McFadden	South Carolina & Northern Georgia	mmcfadden@bestandlangston.com	803-530-1478
Chris Newkirk	Delaware, Maryland, Virginia	cnewkirk@raymurray.com	859-585-7680
Paul Schwartz	Hearth & Grill Specialist - NYC, Westchester Co. & Long Island	principledmarketing1@gmail.com	516-668-1669
Steve Steller	IL, IN, Western MI, MN & WI	ssteller@raymurray.com	413-478-0216
Andrew Vogl	Propane Specialist - NY (except Long Island, All Products - Western NY	avogl@raymurray.com	413-644-6137
Kevin Bayley	LP Business Development Manager	kbayley@raymurray.com	413-281-9023

TABLE OF CONTENTS

RESIDENTIAL ZONE HEATING

<i>Empire Heating Systems</i>	<i>Page 1</i>
<i>Hearthrite Heaters</i>	<i>Page 6</i>
<i>Rinnai Heaters</i>	<i>Page 7</i>
<i>Enerco Heaters</i>	<i>Page 8</i>
<i>Miller Mobile Home Furnaces</i>	<i>Page 11</i>

WATER HEATING APPLIANCES

<i>Rinnai Tankless Water Heaters</i>	<i>Page 12</i>
<i>Rinnai Boilers</i>	<i>Page 19</i>
<i>Navien Water Heaters</i>	<i>Page 22</i>
<i>Navien Boilers</i>	<i>Page 24</i>

COMMERCIAL HEATING

<i>LB White Heaters</i>	<i>Page 26</i>
<i>Modine/ Hot Dawg Heaters</i>	<i>Page 28</i>
<i>Enerco Heaters</i>	<i>Page 29</i>
<i>Detroit Radiant</i>	<i>Page 30</i>
<i>Bromic Patio Heaters</i>	<i>Page 32</i>

Outdoor Living

<i>Bromic Patio Heaters</i>	<i>Page 32</i>
<i>Uniflame</i>	<i>Page 33</i>
<i>Skeeter Vac</i>	<i>Page 33</i>
<i>Jandy Pool and Spa Heaters</i>	<i>Page 34</i>

Vent-Free Room Heaters

Vent-Free systems draw room air to support combustion in a clean burning blue-flame or radiant-plaque system. Rated at 99.9 percent efficient, vent-free heaters release nearly all of the available heat energy into the room. To ensure safe operation, all vent-free systems include an Oxygen Depletion Sensor (ODS) to automatically turn off the heater if room oxygen level drops to an unsafe level. Vent-free systems are designed to provide supplemental heat and may not be used as a primary heat source.

INFRARED VENT-FREE HEATERS

Model	Description
SR-6W	LP 6,000 btu's, Vent-free infrared heater, manual
NSR-6W	NG 6,000 btu's, Vent-free infrared heater, manual
SR-10W	LP 10,000 btu's, Vent-free infrared heater, manual
NSR-10W	NG 10,000 btu's, Vent-free infrared heater, manual
SR-10TW	LP 10,000 btu's, Vent-free infrared heater, hydraulic t-stat
NSR-10TW	NG 10,000 btu's, Vent-free infrared heater, hydraulic t-stat
SR-18W	LP 18,000 btu's, Vent-free infrared heater, manual
NSR-18W	NG 18,000 btu's, Vent-free infrared heater, manual
SR-18TW	LP 18,000 btu's, Vent-free infrared heater, hydraulic t-stat
NSR-18TW	NG 18,000 btu's, Vent-free infrared heater, hydraulic t-stat
SR-30W	LP 30,000 btu's, Vent-free infrared heater, manual
NSR-30W	NG 30,000 btu's, Vent-free infrared heater, manual
SR-30TW	LP 30,000 btu's, Vent-free infrared heater, hydraulic t-stat
NSR-30TW	NG 30,000 btu's, Vent-free infrared heater, hydraulic t-stat



SR-30W

BLUE FLAME VENT-FREE HEATERS

Model	Description
BF-10W	LP 10,000 btu's, Vent-free radiant heater, hydraulic t-stat
NBF-10W	NG 10,000 btu's, Vent-free radiant heater, hydraulic t-stat
BF-20W	LP 20,000 btu's, Vent-free radiant heater, hydraulic t-stat
NBF-20W	NG 20,000 btu's, Vent-free radiant heater, hydraulic t-stat
BF-30W	LP 30,000 btu's, Vent-free radiant heater, hydraulic t-stat
NBF-30W	NG 30,000 btu's, Vent-free radiant heater, hydraulic t-stat



BF-30W

VENT-FREE ACCESSORIES

Model	Description
SRB-18W	MANUAL BLOWER FOR SR-18
SRB-18TW	AUTOMATIC BLOWER FOR SR-18T, BF-10, AND BF-20
SRB-30W	MANUAL BLOWER FOR SR-30
SRB-30TW	AUTOMATIC BLOWER FOR SR-30T, BF-30
SRS-10W	FLOOR STAND FOR SR-6, 10 & 10T
SRS-18W	FLOOR STAND FOR SR-18, SR-18T, BF-10, AND BF-20
SRS-30W	FLOOR STAND FOR SR-30, SR-30T, AND BF-30



SRB-30W

UltraSaver90Plus Power-Vented Wall Furnaces

At 90% AFUE, the UltraSaver90Plus is the most efficient wall furnace available. This clean, modern cabinet fits any décor. Choose models in 35,000 or 17,500 BTUs.

SUPER H-E ULTRASAVER 90 PLUS WALL FURNACES

Model	Description
PVS-18	LP 8,700-17,500 btu's, Super High Efficient Wall Furnace
NPVS-18	NG 8,700-17,500 btu's, Super High Efficient Wall Furnace
PVS-35	LP 17,500-35,000 btu's, Super High Efficient Wall Furnace
NPVS-35	NG 17,500-35,000 btu's, Super High Efficient Wall Furnace

ULTRASAVER90 PLUS ACCESSORIES

Model	Description
PVSEP1	External condensate pump kit
PVSCT10	10 ft. Condensate tube extension
PVSHT1	Heated humidification tray (pre 2015)
PVSHT2	Heated humidification tray (2015 and newer)
FRBTPL	Programmable, battery remote, t-stat, backlit
PVSRT1	Temperature sensor relocation kit
TDV1	Wall t-stat
PVSDS1	Deep rear shroud
PVWS1	Wall mount shroud



PVS-35

PVS Dimensions

Height:	27 7/8"
Width:	36 1/8"
Depth:	13"



High-Efficiency DV Wall Furnaces

Advanced technology makes these heaters more than 80% efficient A.F.U.E. The 20,000 Btu DV20E is ideal for heating basements, family rooms or several small rooms. The DV40E and DV55E are perfect for heating large family rooms, offices, apartments or even entire homes

H-E DIRECT-VENT WALL FURNACES

Model	Description
DV-20E	LP 20,000 btu's, Direct-vent Hi-Efficient wall furnace, H S I
NDV-20E	NG 20,000 btu's, Direct-vent Hi-Efficient wall furnace, H S I
DV-40E	LP 40,000 btu's, Direct-vent Hi-Efficient wall furnace, H S I
NDV-40E	NG 40,000 btu's, Direct-vent Hi-Efficient wall furnace, H S I
DV-55E	LP 55,000 btu's, Direct-vent Hi-Efficient wall furnace, H S I
NDV-55E	NG 55,000 btu's, Direct-vent Hi-Efficient wall furnace, H S I



DV-55E

H-E DIRECT-VENT WALL FURNACE ACCESSORIES

Model	Description
DVE-1	Intake/exhaust extension kit (54" w/ 2 elbows) for 20 & 40
DVE-2	Intake/exhaust extension kit (54" for extended runs) 20&40
TRW	Wireless remote wall thermostat
DVT-2	Extended vent terminal (for walls up to 32") for all models
DVP-1	Floor pad

HE DV Furnace Dimensions

Model	Height	Width	Depth
DV-20E	26"	37"	15 3/4"
DV-40E	26"	37"	15 3/4"
DV-55E	26"	37"	15 3/4"

DIRECT-VENT WALL FURNACES

Whether you need to heat a single room or an entire home, Empire has Direct-Vent Furnaces to suit your needs. Specifically designed for areas where flues or chimneys are not available or cannot be used. Removable front panels for easy cleaning and servicing. Uses outside air to support combustion. Inside air is warmed as it recirculates around a sealed chamber. This warm air heats the room cleanly and efficiently.

DIRECT-VENT WALL FURNACES

Model	Description
DV210-SGX	LP 10,000 btu's, Direct-vent wall furnace, millivolt (no t-stat)
NDV210-SGX	NG 10,000 btu's, Direct-vent wall furnace, millivolt (no t-stat)
DV215-SGX	LP 15,000 btu's, Direct-vent wall furnace, millivolt (no t-stat)
NDV215-SGX	NG 15,000 btu's, Direct-vent wall furnace, millivolt (no t-stat)
DV25-SG	LP 25,000 btu's, Direct-vent wall furnace, millivolt
NDV25-SG	NG 25,000 btu's, Direct-vent wall furnace, millivolt
DV35-SG	LP 35,000 btu's, Direct-vent wall furnace, millivolt
NDV35-SG	NG 35,000 btu's, Direct-vent wall furnace, millivolt



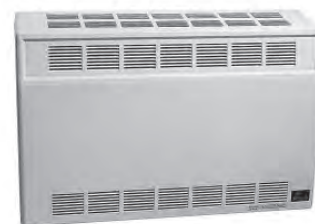
DV210-SGX

DIRECT-VENT WALL FURNACE ACCESSORIES

Model	Description
DRB-1	Automatic blower (DV25/DV35)
DVB-1	Automatic blower (DV210/DV215)
TMV	Millivolt, reed switch, wall thermostat
TDV1	Digital wall thermostat
TRW	Wireless remote wall thermostat
DV822	Standard vinyl siding kit
TH-345	Flue outlet vent tube extension 13"-19" (DV210/215)
TH-346	Air inlet vent tube extension 13"-19" (DV210/215)
DV-844	Flue outlet vent tube extension 13"-19" (DV25/35)
DV-845	Air inlet vent tube extension 13"-19" (DV25/35)
VSK*	Slim line vinyl kit DV210/DV215
VSK-2*	Slim line vinyl kit DV25/35& DVC35/55 units
DV822**	Vinyl Siding kit DV210/215 - DV25/35 & DVC35/55

*INCLUDES OUTSIDE WALL PLATE AND VENT SHIELD

** INCLUDES VINYL SIDING STAND-OFF ONLY



DV35-SG

DV Furnace Dimensions

Model	Height	Width	Depth
DV210-SG	21 3/8"	16 1/4"	9 3/8"
DV215-SG	24 7/8"	20 1/4"	9 3/8"
DV25-SG	37 3/4"	37"	11 1/2"
DV35-SG	37 3/4"	37"	11 1/2"



Vented Zone Heating Systems

Vented zone heating systems use room air to support combustion and exhaust their flue products to the outdoors via a single pipe. Mounts anywhere you have access to an existing flue or where you can install a vent run through the roof. A vented zone heating system makes an excellent replacement for an inefficient oil or wood stove. Vented zone heating systems may be installed as the primary heating system.

Gravity Wall Furnaces

The Gravity Wall Furnace offers total comfort for a fraction of the cost of electric heat. The furnace's common size retrofits easily. Designed for installation in a standard 2 x 4 stud wall cavity. Optional Out-of-Wall Kit (GWTW2W) allows surface mounting and encloses the sides. The 50,000 Btu GWT50W installs in the wall between adjoining rooms and heats both. or the smaller GWT25W and GWT35W, an optional Rear Register Kit (GWTR1W) directs heat to an adjoining room.

Visit our website or call for models and availability



DV Counterflow Furnaces

These Direct-Vent Counterflow Wall Furnaces may be recessed between standard wall studs and can be installed on an outside wall. Provides total comfort for a fraction of the cost of electric heat. Matchless pushbutton piezo ignition for manual operation; also works with optional thermostats or other remote controls. Front panels remove for cleaning and servicing. Counterflow design circulates warm air at floor level

Vented Counterflow Furnaces

Counterflow wall furnaces circulate warmth at floor level to provide comfort at a fraction of the cost of electric heat. The front panels remove easily for cleaning and servicing. Available in standing pilot with matchless piezo ignition or state-of-the-art electronic ignition.

Visit our website or call for models and availability



Console and Visual Flame Heaters

Empire Vented Room Heaters are crafted for visual appeal and maximum efficiency. Room heaters make ideal replacements for traditional wood-burning or coal-burning heaters. Just like a wood stove, they use room air for combustion. Vent pipes connect the heater to a chimney or flue to carry the by-products of combustion outside. Empire Vented Room Heaters are designed for quiet operation. The curved combustion chamber design minimizes noise while the burner ignites the gas immediately as it enters the burner port for added efficiency.

Floor Furnaces

This is America's most popular floor furnace and needs no electricity to operate. With its whole-house heating capability, you will be in total comfort for a fraction of the cost of electric heat.

Visit our website or call for models and availability



Vent-Free Room Heaters

HearthRite

Vent-Free systems draw room air to support combustion in a clean burning blue-flame or radiant-plaque system. Rated at 99.9 percent efficient, vent-free heaters release nearly all of the available heat energy into the room. To ensure safe operation, all vent-free systems include an Oxygen Depletion Sensor (ODS) to automatically turn off the heater if room oxygen level drops to an unsafe level. Vent-free systems are designed to provide supplemental heat and may not be used as a primary heat source.

INFRARED VENT-FREE HEATERS

LP MODEL	NG MODEL	Description
HRW06ML	HRW06MN	6,000 btu's, Vent-free infrared heater, manual
HRW10ML	HRW10MN	10,000 btu's, Vent-free infrared heater, manual
HRW10TL	HRW10TN	10,000 btu's, Vent-free infrared heater, hydraulic t-stat
HRW17ML	-	15,000 btu's, Vent-free infrared heater, manual
-	HRW18MN	18,000 btu's, Vent-free infrared heater, manual
HRW17TL	-	15,000 btu's, Vent-free infrared heater, hydraulic t-stat
-	HRW18TN	18,000 btu's, Vent-free infrared heater, hydraulic t-stat
HRW25ML	-	25,000 btu's, Vent-free infrared heater, manual
-	HRW30MN	30,000 btu's, Vent-free infrared heater, manual
HRW25TL	-	25,000 btu's, Vent-free infrared heater, hydraulic t-stat
-	HRW30TN	30,000 btu's, Vent-free infrared heater, hydraulic t-stat



HBW10TL

BLUE FLAME VENT-FREE HEATERS

LP MODEL	NG MODEL	Description
HBW06ML	HBW06MN	6,000 btu's, Vent-free radiant heater, manual
HBW10ML	HBW10MN	10,000 btu's, Vent-free radiant heater, manual
HBW10TL	HBW10TN	10,000 btu's, Vent-free radiant heater, hydraulic t-stat
HBW20ML	HBW20MN	20,000 btu's, Vent-free radiant heater, manual
HBW20TL	HBW20TN	20,000 btu's, Vent-free radiant heater, hydraulic t-stat
HBW30ML	HBW30MN	30,000 btu's, Vent-free radiant heater, manual
HBW30TL	HBW30TN	30,000 btu's, Vent-free radiant heater, hydraulic t-stat



HBW30ML

VENT-FREE ACCESSORIES

LP MODEL	Description
HAB01	HR BLOWER (HB & HR)
HABF	HR STAND HBW/HRW ALL MODELS
HAS04	Stand (fits heaters 6 - 10,000 btu's) 2011 and newer
HABLR	HR BLOWER HBW/HRW 17 THRU 31



HABF

Direct Vent Wall Furnaces

Rinnai

With a Rinnai EnergySaver® Direct Vent Wall Furnace, you'll be as comfortable with your energy bill as you are with your room temperature. Our technology uses only the exact amount of gas needed, optimizing energy efficiency. With multiple models, we have just the right size and configuration to complement your existing heating system.

DIRECT-VENT WALL FURNACES

BEIGE CABINETS

NG	Model	Description
N-	EX08CT	3,000-8,000 btu's, Wall thermostat capable
N-	EX11CT	5,500-11,000 btu's, Wall thermostat capable
N-	EX17CT	8,200-16,700 btu's, Wall thermostat capable
N-	EX22CT	8,200-20,700 btu's, Wall thermostat capable
N-	EX38CT	LP 10,500-36,500 btu's, Wall thermostat capable



EX08CT

DIRECT-VENT WALL FURNACES

WHITE CABINETS

NG	Model	Description
N-	EX22CWT	8,200-20,700 btu's (white), Wall thermostat capable
N-	EX38CWT	10,500-36,500 btu's (white), Wall thermostat capable



EX17CT

CONVERSION KITS

For Model	LP to NG	NG to LP
EX08C/CT	204000033	204000037
EX11C/CT	204000034	204000038
EX17C/CT	204000035	204000039
EX22/EX22WC/CT	204000036	204000040
EX38/EX38WC/CT	203000001	203000002



EX38CWT

WALL THERMOSTAT KITS

RMI Part No.	Description
204000045	Wall thermostat installation kit

DV Furnace Dimensions

Model	Height	Width	Depth	Model	Height	Width	Depth
EX08CT	27 3/8"	18 1/4"	10 1/8"	EX22CT	22 7/8"	29 7/8"	10 1/8"
EX11CT	27 3/8"	18 1/4"	10 1/8"	EX38CT	26 3/8"	36 5/8"	13"
EX17CT	22 7/8"	29 7/8"	10 1/8"				

Vent Free Fan Convectors

Rinnai

For rooms that are hard to heat, Rinnai Vent-Free Fan Convectors are the perfect solution. They incorporate a convection fan that evenly distributes warm air throughout the space, providing comfort even in faraway corners. Temperature output control maintains efficiency when heat isn't needed. By eliminating vents or ducts, places where heat typically gets lost, virtually all the warm air gets delivered to the room—making for a solution that's 99.9 percent efficient. In fact, the Rinnai Vent-Free Fan Convector is one of the most fuel-efficient heating products on the market today. Using either natural gas or liquid propane fuel, it can significantly reduce energy bills.

VENT-FREE FAN CONVECTORS

NG	Model	Description
N-	FC510	LP, 5,600 / 10,000 btu's
N-	FC824	LP, 8,000 / 22,000 btu's

* Not field convertible, dedicated fuel types

** Requires electricity to operate



FC510

Wall Furnace Accessories

VENTING AND TERMINATIONS

RMI Part No.	Description
RHFE-FOT150-S	"S" Vent (3' - 4 1/2")
RHFE-FOT151-A	"A" Vent (4 1/2" - 9 1/2")
RHFE-FOT152-B	"B" Vent (9 1/2" - 15 3/4")
RHFE-FOT153-C	"C" Vent (15 3/4" - 23 5/8")
RHFE-FOT154-D	"D" Vent (23 5/8" - 31 1/2")
RHFE-FOT155	Extension for EX/NEX11C/CT (11" - 20")
RHFE-FOT156	Extension kits for EX/NEX11C/CT (21" - 40")
RHFE-FOT157	Extension kits for EX/NEX11C/CT (60" - 80")
RHFE-FOT158	Elbow for EX/NEX11, EX/NEX17, EX/NEX22, EX/NEX22W C/CT
RHFE-FOT201	Extension Long Elbow with intake hose
RHFE-FOT219	Extension kits for EX/NEX17, EX/NEX22, EX/NEX22W C/CT (11" - 20")
RHFE-FOT220	Extension for EX/NEX17, EX/NEX22, EX/NEX22W C/CT (21" - 40")
RHFE-FOT221	Extension kits for EX/NEX17, EX/NEX22, EX/NEX22W C/CT (60" - 80")
RHFE-FOT102	Extensions kits for EX/NEX38C/CT (11" - 20")
RHFE-FOT103	Extensions kits for EX/NEX38C/CT (21" - 40")
RHFE-FOT114	Extensions kits for EX/NEX38C/CT (60" - 80")
RHFE-FOT115	Elbow for EX/NEXS38C/CT

Vent-Free Room Heaters

Heatstar Vent-Free Heaters come in radiant or blue flame indoor safe wall-mountable heaters that run off of either propane or natural gas



INFRARED VENT-FREE HEATERS

Model	Description
HSVFRD10LP	LP 10,000 btu's, wall bracket, feet
HSVFRD10NG	NG 10,000 btu's, wall bracket, feet
HSSVFRD10LPT	LP 10,000 btu's, thermostat, wall bracket, feet
HSSVFRD20LPBT	LP 20,000 btu's, thermostat, blower fan, wall bracket, feet
HSSVFRD20NGBT	NG 20,000 btu's, thermostat, blower fan, wall bracket, feet
HSSVFRD30LPBT	LP 30,000 btu's, thermostat, blower fan, wall bracket, feet
HSSVFRD30NGBT	NG 30,000 btu's, thermostat, blower fan, wall bracket, feet



HSSVFRD10LPT

BLUE FLAME VENT-FREE HEATERS

Model	Description
HSVFBF10LP	LP 10,000 btu's, wall bracket, feet
HSVFBF10NG	NG 10,000 btu's, wall bracket, feet
HSSVFBF10LPT	LP 10,000 btu's, thermostat, wall bracket, feet
HSSVFBF20LPBT	LP 20,000 btu's, thermostat, blower fan, wall bracket, feet
HSSVFBF20NGBT	NG 20,000 btu's, thermostat, blower fan, wall bracket, feet
HSSVFBF30LPBT	LP 30,000 btu's, thermostat, blower fan, wall bracket, feet
HSSVFBF30NGBT	NG 30,000 btu's, thermostat, blower fan, wall bracket, feet



HSSVFBF30LPBT

Garage and Workshop Heaters

Heatstar High Intensity Radiant Propane heaters require no electricity and are great for use in workshops or garages.

GARAGE/WORKSHOP HEATERS

Model	Description
HS22L	LP Radiant 22,000 btu's garage/workshop heater (Aluminum Housing)
HS25N	NG Radiant 25,000 btu's garage/workshop heater (Aluminum Housing)
H22L-BLK	LP Radiant 22,000 btu's garage/workshop heater (Black Housing)
H22N-BLK	NG Radiant 25,000 btu's garage/workshop heater (Black Housing)



HS22L

Tank Top Heaters

Mr. Heater Original Tank Top Heaters are a great source for economical heat from sporting events to ice fishing and have been the top choice for decades.

TANK TOP HEATERS

Model	Description
MH15	LP 10-12-15,000 btu's Disposable LP Cylinder heater
MH15C	LP 10-12-15,000 btu's Disposable LP Cylinder cooker/heater
MH15T*	LP 10-12-15,000 btu's 20 lb Single Tank top heater
MH15TS	LP 10-12-15,000 btu's 20 lb Single Tank top heater ,Spark Ignition
MH30T	LP 10-30,000 btu's 20 lb Double Tank top heater
MH30TS	LP 10-30,000 btu's 20 lb Double Tank top heater, Spark Ignition
MH45T	LP 8 - 45,000 btu's 20 lb or 100 lb Triple Tank top heater
MH540T	LP 29,000 - 48,000 btu's Pivot head Tank top heater

* Features tip-over shut off



MH30TS



Portable Buddy Heaters

Mr. Heater Portable Buddy Propane Heaters are the Most Popular Portable Heaters in America.

PORTABLE BUDDY HEATERS

Model	Description
MH4B	LP 3,800 btu's Portable "Little Buddy" heater
MH9B	LP 4,000 -9,000 btu's Portable "Buddy" heater
MH12HB	LP 6,000 -12,000 btu's Portable "Hunting Buddy" heater
MH18B	LP 4,000 -18,000 btu's Portable "Big Buddy" heater



MH18B

Cabinet Heaters

The Mr. Heater Cabinet Heater provides Portable Radiant Heat for all outdoor applications.

CABINET HEATER

Model	Description
MH18CH	LP 6-12-18,000 btu's, Cabinet heater with piezo ignition



MH18CH

Manufactured Housing Gas Furnaces

Today, you'll find Miller high-efficiency gas furnaces in more manufactured homes than ever before. That's because more families are discovering only Miller furnaces offer such incredible efficiency and comfort, plus lots of other value-added features.

Specifications

- Dual shut-off valves ensure 100% gas shut-off for safety.
- Continuous fan switch circulates room air continuously during summer or winter operation to improve comfort.
- Built-in coil cabinet allows fast and easy add-on of split system air conditioner and heat pump.
- High-efficiency operation meets all federal energy efficiency standards.
- Choice of air conditioning-ready furnaces allows easy hook up of a matching cooli system to further improve your year-round comfort and efficiency.
- Meets HUD requirements

Furnace models include:

- 96% AFUE MG2S & MG3S Gas Furnaces
- The most efficient gas furnaces specifically engineered for use in manufactured homes.
- 95% AFUE CMF95 Gas Furnace
- 92.1% AFUE M4 Gas Furnace
- 80% AFUE M1 Gas Furnace
- 80% AFUE CMF3 Gas Furnace

MILLER



GAS FIRED FURNACES

Model	Description
CMF95-072	72,000 btu's, NG furnace with H S I
CMF3-70-PG	70,000 btu's NG direct vent replacement furnace

Furnace Dimensions

Model	Height	Width	Depth
CMF95	57"	18"	24 3/16"

OIL FIRED FURNACES

RMI Part No.	Description
CMF280-PO	80MBH Furnace w/oil Power Burner

BASE PACKAGES FOR CMF FURNACES

Model	Description
903451	MA-100 Universal, 12 x 12 x 13 with 13" feeder duct
903453	MA-200, 12 x 12 x 8 with 8" feeder duct

VENT KITS FOR CMF95 CONDENSING GAS FURNACES

Model	Description
904953	Concentric vent termination kit
921683	Field replacement furnace vent transition kit

Approved Venting

Piping Material	Standard
SCH 40PVC	D1785
PVC-DWV	D2665
SDR-21/26	D2241
ANS-DMV	D2661
Sch 40 ABS	F628
Cellular PVC	F891

**Approved Venting supplied from others.

***Replacement parts and controls listed on page 60

Super High Efficiency CONDENSING TANKLESS WATER HEATERS

Rinnai's RUCS and RUS models, part of Rinnai's Luxury Series, offer the highest output of our condensing line of tankless units. You can expect sleek, modern design and a range of features and benefits to fully satisfy the hot water demands of larger homes.

SE SERIES - WIFI READY

RESIDENTIAL ONLY

Model #	Description
RUCS75	10,300 - 160,000 BTU's .26 to 7.5 GPM
RUS75	10,300 - 160,000 BTU's .26 to 7.5 GPM
RUCS65	10,300 - 130,000 BTU's .26 to 6.5 GPM
RUS65	10,300 - 130,000 BTU's .26 to 6.5 GPM

ALL RUCS / RUS models come with a built-in status monitor.

(MC-91-2 controller and isolation valve kit options sold separately)



RUCS75iP

Do you need endless hot water in a new home or are you ready to replace an inefficient tank heater? You can enjoy all the comfort and performance you expect from Rinnai for less with our super-high efficiency plus RU and RUR models. These compact units are powerful enough to meet your needs, consistently delivering hot water in up to four places around your home at the same time.

SE+ SERIES - WIFI READY

RESIDENTIAL AND COMMERCIAL UNITS

Model #	Description
RU130	15,200 - 130,000 BTU's .26 to 9.8 GPM
RUR160	15,200 - 160,000 BTU'S .26 to 9.8 GPM, 360 circ, WIFI
RU160	15,200 - 160,000 BTU'S .26 to 9.8 GPM
RU180	15,200 - 180,000 BTU's .26 to 9.0 GPM
RUR199	15,200 - 199,000 BTU's .26 to 11.0 GPM, 360 circ, WIFI
RU199	15,200 - 199,000 BTU's .26 to 11.0 GPM

ALL UNITS include isolation valves

* All RUR interior units include an integrated MC-91-2US controller, 98° - 140°F (factory setting 120°F)

** All RU exterior units include an MC-91-2US controller in the box, 98° - 140°F (factory setting 120°F)



RUR199iP

Tankless Water Heater Unit Comparison

	High Efficiency (HE and HE+)		Super High-Efficiency (SE and SE+)		
	HE Series V Non-Condensing	HE+ Series RL/RLX Non-Condensing	SE Series RUCS/RUS Condensing	Sensei SE+ Series RU Condensing	RUR Condensing
Energy Efficient Rating	.79 - .82	.81 - .82	.85 - .90	.91 - .93	0.93
Energy Star Certified	x	x	x	Y	Y
Recirculation Tech	x	Circ-Logic Capable	x	Circ-Logic Capable	360 Circ Incl
Quick Access Service	x	YES	x	YES	YES
Wi-Fi Ready	x	WiFi Capable	x	WiFi Capable	WiFi Incl

Super High Efficiency CONDENSING TANKLESS WATER HEATERS

Rinnai

VENTING AND TERMINATION

RMI Part No.	Description
224359	Condensing roof discharge termination 38" (ABOVE)
229031	Condensing 12" horizontal termination kit
229032	Condensing 21" horizontal termination kit
229208	Condensing 45 degree vent pipe elbow (2PCS)
229233	Condensing 90 degree vent pipe elbow
229318	Condensing 10" vent pipe extension
229319	Condensing 19.5" vent pipe extension
229320	Condensing 39" vent pipe extension
224047PP	Condensing raised horizontal termination kit (snorkel)
223186PP	Condensing 19" horizontal termination diverter kit
710342	Rubber wall plate (white)
710602	Rubber wall plate (black)
224045	Thimble
146141	Roof flashing - flat roof
189950	Shingle roof flashing – 1/12 to 6/12 pitch
189951	Shingle roof flashing – 6/12 to 12/12 pitch
189952	Shingle roof flashing – 8/12 to 16/12 pitch
50171949	Tile / Shingle roof flashing – 1/12 to 6/12 pitch
50171954	Tile / Shingle roof flashing – 6/12 to 12/12 pitch
50171961	Tile / Shingle roof flashing – 8/12 to 16/12 pitch
242141	Flashing for metal roof
169044	Pipe clamp
224049	Metal pass through plate
224042	Universal bug guard
185344PP	Roof termination ext kit
185348NPP	2"/4" COND ROOF TERM EXT KIT
102000012	Horizontal flashing panel
187585PP***	Concentric to twin pipe adaptor for use with PVC/CPVC
187595NPP	2"X2"/4" COND TWIN PIPE ADPTOR

Super High Efficiency CONDENSING TANKLESS WATER HEATERS

Rinnai

ACCESSORIES

RMI Part No.	Description
GTK15	Grundfos® Pump with timer kit w/flange kit for Circ-Logic
MC-195T-US	Timer controller for recirculation
MC-601-BK	Remote controller - Residential or Commercial 98°-140°F (silver)
MC-601-W	Remote controller - Residential or Commercial 98°-140°F (white)
MCC-601-W	Commercial controller (for temps >140°) not for use with RUR models
MC-100V-1S	Deluxe remote controller – clock and call features, 98°-140°F (silver)
MC-100V-1W	Deluxe remote controller – clock and call features, 98°-140°F (white)
BC-100V-1S	Bath fill remote controller – 98°-140° (silver)
BC-100V-1W	Bath fill remote controller – 98°-140° (white)
MSB-M	Multi unit controller kit
MSB-C1	Cable to connect condensing & LS (excludes V53 & R63 models)
MSB-C2	Cable for connecting MSB-M control units
REU-EZC-1US	EZ connect™ cable
REU-EZC-2	EZCONNECT CORD 2 UNITS
PCD07-SM	Pipe cover for the RC98/RC80
PCD07-SM-BP	Bottom plate for the PCD07-SM pipe cover
PCD07-EW	Pipe cover for the RUCS/RUS models only
PCD07-EW-BP	Bottom plate for the PCD07-EW pipe cover, RUCS/RUS models only
RGB-CTWH-2	Recess box for condensing tankless water heater for RU series (KB)
RGB-CTWH-4	CONDENSING TANKLESS RECESS BOX
804000074	Condensate neutralizer kit
809000114	Condensate neutralizer refill

SCALE CONTROL SYSTEM

RMI Part No.	Description
103000038	ScaleCutter® System ¾" feed
103000039	ScaleCutter® System refill

PLUMBING INSTALLATION KIT

RMI Part No.	Description
MIVK-T-LW	Plumbing installation kit, compact design, lead-free, threaded



© Ray Murray, Inc. Edition 12

High Efficiency

NON-CONDENSING TANKLESS WATER HEATERS

Rinnai's high-efficiency V Models are the right combination of comfort and value. These compact units offer the reliability you'd expect from Rinnai with performance that's ideal for small to medium-sized new homes or remodels.

HE SERIES - WIFI READY

RESIDENTIAL ONLY

Model #	Description
V53*	120,000 btu's, 5.3 gpm
V65**	152,000 btu's, 6.6 gpm
V75**	180,000 btu's, 7.5 gpm
V94**	199,000 btu's, 9.8 gpm

* CAN BE USED WITH MC-91 CONTROLLER - SOLD SEPARATELY

** INTERIOR UNITS INCLUDE AN INTEGRATED MC-91-29US CONTROLLER, 98° - 140° F

** EXTERIOR UNITS INCLUDE AN INTEGRATED MC-91-2US CONTROLLER IN BOX, 98° - 140° F



V75iP

Rinnai's high efficiency plus, non-condensing tankless water heater technology is at your finger tips. Not only are the RLX models low NOx emitting, but there is wi-fi monitoring and recirculation technology available today at a price that fits any budget

HE+ SERIES - WIFI READY

RESIDENTIAL AND COMMERCIAL

Model #	Description
RL75**	180,000 btu's, 7.5 gpm
RL94**	190,000 btu's, 9.4 gpm

** INTERIOR UNITS INCLUDE AN INTEGRATED MC-91-29US CONTROLLER, 98° - 140° F

** EXTERIOR UNITS INCLUDE AN INTEGRATED MC-91-2US CONTROLLER IN BOX, 98° - 140° F



RLX94iN

SCALE CONTROL SYSTEM

RMI Part No.	Description
103000038	ScaleCutter® System ¾" feed
103000039	ScaleCutter® System refill

PLUMBING INSTALLATION KIT

RMI Part No.	Description
MIVK-T-LW	Plumbing installation kit, compact design, lead-free, threaded



High Efficiency NON-CONDENSING TANKLESS WATER HEATERS

Rinnai

ACCESSORIES

RMI Part No.	Description
GTK15*	Grundfos® Pump with timer kit w/flange kit for Circ-Logic
MC-195T-US	Timer controller for recirculation
MC-601-BK	Remote controller - Residential or Commercial 98°-140°F (silver)
MC-601-W	Remote controller - Residential or Commercial 98°-140°F (white)
MCC-601-W	Commercial controller (for temps >140°)
MC-91-1US-S-RK**	Integrated controller relocation kit
MC-100V-1S	Deluxe remote controller – clock and call features, 98°-140°F (silver)
MC-100V-1W	Deluxe remote controller – clock and call features, 98°-140°F (white)
BC-100V-1S	Bath fill remote controller – 98°-140° (silver)
BC-100V-1W	Bath fill remote controller – 98°-140° (white)
MSB-M***	Multi unit controller kit
MSB-C1*	Connection cable
MSB-C2	Connection cable for MSB-M control units (cable length 25.2 ft)
REU-EZC-1US	EZ connect™ cable for connecting 2 units
REU-EZC-2	EZCONNECT CORD 2 UNITS
REU-PVA-4****	Pressure activated valve for manifolding RV63E/V53E
RGB-20U	Universal recess box : RV53E, V53E
RGB-25U-MSAL-C	Universal moisture seal recess box for VA, VB, VC (RL94E, RL75E, V75E, V65E)
RGB-25U-C	Universal recess box for VA, VB, VC (RL94E, RL75E, V75E, V65E)
PC-20-W	Pipe cover enclosure V53E/RV53E
PCD03-SM2	Pipe cover enclosure for the HE+ series external units
PCD03-SM2-BP	Bottom plate for PCD03-SM2 pipe cover and PDC03-EWV
PCD03-EWV	Pipe cover enclosure: V65/V75 units
RWM101	WIFI MODULE
104000059	Kit, Freeze protection solenoid valve for outdoor units in cold regions
MCC-601-W	Commercial controller (for temps >140°)

* HE+ SERIES ONLY

** HE SERIES ONLY

*** ONE CONTROLLER NEEDED FOR EVERY 5 UNITS, 25 UNITS MAX

**** ONE PVA NEEDED PER PAIR OF UNITS



GTK15



MC-195T



MSB-C1

High Efficiency

NON-CONDENSING TANKLESS WATER HEATERS

Rinnai

CONCENTRIC POLYPROPYLENE VENTING AND ACCESSORIES

RMI Part No.	Description
223181	11.5" Non-condensing standard & all-weather horizontal term kit
223182	21" Non-condensing standard & all-weather horizontal term kit
224052	19.5" Vent pipe extension
224053	39" Vent pipe extension
184118-S	Roof discharge terminal 38" (18" above roof)
184119	Roof discharge terminal 61" (38" above roof)
185342	Roof terminal ext kit
224063	90 Degree elbow
223187	21" Non-condensing horizontal termination diverter kit
224051	10" Vent pipe extension
224054	Telescoping vent length
224050	45 Degree elbow (qty of 2)
224045	Thimble (1 piece per box)
222053	Condensate trap
224049	Vent support bracket
169044	Pipe clamp
146141	Roof flashing assembly - flat roof
189950	Shingle roof flashing – 1/12 to 6/12 pitch
189951	Shingle roof flashing – 6/12 to 12/12 pitch
189952	Shingle roof flashing – 8/12 to 16/12 pitch
242141	Flashing for metal roof
50171949	Tile / Shingle roof flashing – 1/12 to 6/12 pitch
50171954	Tile / Shingle roof flashing – 6/12 to 12/12 pitch
50171961	Tile / Shingle roof flashing – 8/12 to 16/12 pitch
710342	Wall plate (white)
710602	Wall plate (black)
224040	NSF cover (for commercial applications)
224042	Universal bug guard



223182



224045



224050



222053

Commercial Water Heat Systems

Rinnai

Precision Engineering for your Commercial Applications

It's time to give your buildings a more efficient and reliable source of hot water. Rinnai® Tankless and Demand Duo™ Hybrid Commercial Water Heating Systems supply commercial buildings with an endless supply of hot water while you save thousands in operational and life cycle costs. Designed with durable components like high-performance heat exchangers, Rinnai Tankless Water Heaters deliver performance and dependability for even the most demanding applications.

From products to services and everything in-between, Rinnai's dedication to exceeding even the highest expectations drives every aspect of their business. When you choose Rinnai, you're choosing a commitment to excellence.

CU Series Tankless Water Heaters

Model #	Description
CU160	15,000 - 160,000 BTU's .26 to 8.0 GPM
CU199	15,000 - 199,000 BTU's .26 to 9.8 GPM

*Internal units have integrated MC-91-2US

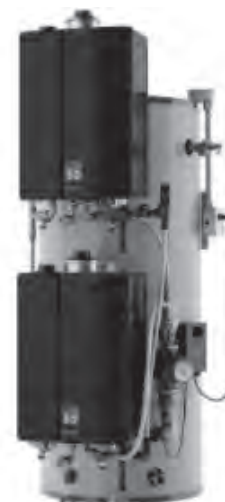
*Externaul units have MC-91-2US in box Both include isolation valve kit in box



DemandDuo H-Series Hybrid Water Heating Systems

RMI Part No.	Description
CHS13080Hi	130,000 BTU, 80 Gallon Tank, 209 GPH, Single Unit
CHS16080Hi	160,000 BTU, 80 Gallon Tank, 244 GPH, Single Unit
CHS19980Hi	199,000 BTU, 80 Gallon Tank, 290 GPH, Single Unit
CHS160100Hi	160,000 BTU, 119 Gallon Tank, 271 GPH, Single Unit
CHS199100Hi	199,000 BTU, 119 Gallon Tank, 317 GPH, Single Unit
CHS398100Hi	398,000 BTU, 119 Gallon Tank, 551 GPH, Double Horizontal
CHS320100HV	320,000 BTU, 119 Gallon Tank, 551 GPH, Double Vertical
CHS398100HVA	398,000 BTU, 119 G ASME Tank, 551 GPH, Double Vertical
CHS398100HV	398,000 BTU, 119 Gallon Tank. 460 GPH, Double Vertical

**GPH calculated for first hour at 100° rise



Call RMI Technical Support For Custom Water Heating Soutlions by Rinnai

I Series Boilers

Rinnai

The Rinnai I-Series boiler offers dual zone heating, precise domestic hot water temperature control along with built-in recirculation logic for combi models to deliver consistent heat

I Series Combi-Boilers

Model #	Description
i060CN	60,000 max (MBH) heating / 160,000 max (MBH) DHW
i090CN	90,000 max (MBH) heating / 160,000 max (MBH) DHW
i120CN	120,000 max (MBH) heating / 199,000 max (MBH) DHW

* FIELD CONVERTIBLE

I Series Heat Only Boilers

Model #	Description
i060SN	60,000 max (MBH) heating
i090SN	90,000 max (MBH) heating
i120SN	120,000 max (MBH) heating
i150SN	150,000 max (MBH) heating

* FIELD CONVERTIBLE



i120CN

M Series Boilers

The Rinnai M-Series boilers provide more efficiency, more heating output and more heat transfer for domestic hot water while providing consistently lower utility costs.

M Series Combi-Boilers

Model #	Description
M060CN	60,000 max (MBH) heating / 160,000 max (MBH) DHW
M090CN	90,000 max (MBH) heating / 160,000 max (MBH) DHW
M120CN	120,000 max (MBH) heating / 199,000 max (MBH) DHW
M160CN	160,000 max (MBH) heating / 199,000 max (MBH) DHW

* FIELD CONVERTIBLE

M Series Heat Only Boilers

Model #	Description
M060SN	60,000 max (MBH) heating
M090SN	90,000 max (MBH) heating
M120SN	120,000 max (MBH) heating
M160SN	160,000 max (MBH) heating

* FIELD CONVERTIBLE



M120CN

WATER HEATING APPLIANCES

E Series Boilers

Rinnai

Rinnai E-Series combi models have the power to deliver whole-home heating and domestic hot water. These compact, wall-mounted designs can be easily installed to replace traditional, less efficient boilers.

E Series Heat Only Units

Model #	Description
E60SRN	NG, 60,000 max (MBH) heating
E60SRP	LP, 60,000 max (MBH) heating
E85SRN	NG, 85,000 max (MBH) heating
E85SRP	LP, 85,000 max (MBH) heating
E110SRN	NG, 110,000 max (MBH) heating
E110SRP	LP, 110,000 max (MBH) heating



E110SRN

Q Series Boilers

Whole-home heating with unparalleled comfort and efficiency makes the Q-Series Boilers ideal for use in homes and in light commercial applications such as car washes, restaurants, and small retail spaces.

Q Series Heat Only Units

Model #	Description
Q85SN	NG, 85,000 btu's
Q85SP	LP, 85,000 btu's
Q130SN	NG, 130,000 btu's
Q130SP	LP, 130,000 btu's
Q175SN	NG, 175,000 btu's
Q175SP	LP, 175,000 btu's
Q205SN	NG, 205,000 btu's
Q205SP	LP, 205,000 btu's

INCLUDES:

- LOW LOSS HEADER PLUMBING KIT



Q205SP

Rinnai Boiler Accessories

Rinnai

ACCESSORIES

RMI Part No.	Description
803000011*	RS100 Room controller
808000025	Air intake filter
804000013	3-Way diverter valve kit Q85S & Q130S
804000014	3-Way diverter valve kit Q175S & Q205S
805000040	Flue gas sensor with cable
809000024	Boiler tool kit
804000074	Condensate neutralizer kit
809000114	Refill, Condensate Neutralizer (All Models)
803000015	Flow Switch Conversion Kit / E50C
808000023	Concentric Flue Adapter / E50C
804000061	E-Series Low Loss Header Kit (LLH, T/P Gauge, Valves, PRV)
804000071	E-Series Side Mount Low Loss Header Pipe Kit
804000072	Side Mount Low Loss Header Pipe kit (Q85S, Q130S)
804000073	Side Mount Low Loss Header Pipe Kit (Q175S, Q175C, Q205S)

VENTING AND TERMINATIONS

RMI Part No.	Description
224359	Condensing roof discharge termination 38" (ABOVE)
229031	Condensing 12" horizontal termination kit
223186PP	Condensing 19" horizontal termination diverter kit
229032	Condensing 21" horizontal termination kit
229208	Condensing 45 degree vent pipe elbow (2PCS)
229233	Condensing 90 degree vent pipe elbow
229318	Condensing 10" vent pipe extension
229319	Condensing 19.5" vent pipe extension
229320	Condensing 39" vent pipe extension
224047PP	Condensing raised horizontal termination kit (snorkel)
710342	Rubber wall plate (white)
710602	Rubber wall plate (black)
224045	Thimble
146141	Roof flashing - flat roof
189950	Shingle roof flashing – 1/12 to 6/12 pitch
189951	Shingle roof flashing – 6/12 to 12/12 pitch
189952	Shingle roof flashing – 8/12 to 16/12 pitch
50171949	Tile / Shingle roof flashing – 1/12 to 6/12 pitch
50171954	Tile / Shingle roof flashing – 6/12 to 12/12 pitch
50171961	Tile / Shingle roof flashing – 8/12 to 16/12 pitch
242141	Flashing for metal roof
169044	Pipe clamp
224049	Metal pass through plate
224042	Universal bug guard
102000012	Horizontal flashing panel



223177PP



146141



169044



224042



187585PP

Condensing Water Heaters



Navien Premium Efficiency condensing tankless water heaters are the #1 selling high efficiency condensing tankless water heaters in North America. The NPE series offers industry leading efficiency up to 0.97 UEF to keep your utility bills low, endless hot water so you never have a cold shower, and exclusive ComfortFlow® technology with built in recirculation that eliminates any cold water sandwich (NPE-A).

"S" SERIES MODELS

RESIDENTIAL AND COMMERCIAL UNITS

MODEL #	Description
NPE-150SNG	18,000 - 120,000 BTU's 3.4 GPM @ 70° temp rise
NPE-180SNG	15,000 - 150,000 BTU's 4.2 GPM @ 70° temp rise
NPE-210SNG	19,900 - 180,000 BTU's 5.0 GPM @ 70° temp rise
NPE-240SNG	19,900 - 199,900 BTU's 5.5 GPM @ 70° temp rise

Features Common to Both "S" and "A" Series units

- 1/2" Gas Pipe Capable Up to 24"
- Field Convertible Gas System (each unit comes as Natural gas w/ LP conversion kit included)
- Dual Stainless Steel Heat Exchangers
- PVC, CPVC, or Poly Propylene Venting
- Cascading Capable (with optional cascade cable)
- Integrated Remote Control



For homes with an extra high demand, NPE units can be cascaded together without a separate controller.

"A" SERIES MODELS

RESIDENTIAL AND COMMERCIAL UNITS

MODEL #	Description
NPE-180ANG	15,000 - 150,000 BTU's 4.2 GPM @ 70° temp rise
NPE-210ANG	19,900 - 180,000 BTU's 5.0 GPM @ 70° temp rise
NPE-240ANG	19,900 - 199,900 BTU's 5.5 GPM @ 70° temp rise

Features Specific to "A" Series units

- ComfortFlow® technology - unit has buffer tank and recirculation pump built into unit
- Designed for use in recirculation applications

ComfortFlow®

Included in NPE-A series



Navien ComfortFlow® is the first to incorporate a built-in insulated buffer tank and recirculation pump. The buffer tank eliminates the "cold water sandwich" effect and issues of minimum flow rates commonly found in other tankless water heaters. The recirculation pump saves on water bills by reducing the time to get hot water. When activated, the ComfortFlow® mode results in additional energy usage.

Non-Condensing Water Heaters



NPN SERIES NON-CONDENSING WATER HEATERS

MODEL #	Description
Universal Units	
NPN-160U-NG	10,700 - 160,000 BTU/H, .81 UEF, GPM 7.6
NPN-160U-LP	10,700 - 160,000 BTU/H, .81 UEF, GPM 7.6
NPN-180U-NG	10,700 - 180,000 BTU/H, .81 UEF, GPM 8.5
NPN-180U-LP	10,700 - 180,000 BTU/H, .81 UEF, GPM 8.5
NPN-199U-NG	10,700 - 199,000 BTU/H, .81 UEF, GPM 9.5
NPN-199U-LP	10,700 - 199,000 BTU/H, .81 UEF, GPM 9.5
External Only Units	
NPN-160E-NG	10,700 - 160,000 BTU/H, .81 UEF, GPM 7.6
NPN-160E-LP	10,700 - 160,000 BTU/H, .81 UEF, GPM 7.6
NPN-180E-NG	10,700 - 180,000 BTU/H, .81 UEF, GPM 8.5
NPN-180E-LP	10,700 - 180,000 BTU/H, .81 UEF, GPM 8.5
NPN-199E-NG	10,700 - 199,000 BTU/H, .81 UEF, GPM 9.5
NPN-199E-LP	10,700 - 199,000 BTU/H, .81 UEF, GPM 9.5



Water Heating Accessories

RMI Part No.	Description
30010604A	Outdoor Vent Cap NPE 150-180-210 or 240 A/S
30009757A	NPE Series Remote Controller
GXXX001319	NPE External Pump Wire
30018661A	NPE Series Parts Kit
30012634A	NPE Pipe Cover 150-180-210 or 240#30012581A)
PNBD-000001	H2Air™ kit AHU Optimizer
PZZZ-00046	HotButton kit, includes 1 plate and 1 button (optional)
30009323A	Plumb Easy Valve Set 3/4" with Relief Valve (lead free)
30012581A	Plumb Easy Valve Set 3/4" with Relief Valve (lead free)
30010747A	2" Wall Flange and Vent Terminator Kit
30003873B	3" Wall Flange and Vent Terminator Kit
GXXX001326	PeakFlow Anti-Scale System
GXXX001327	PeakFlow Replacement Media Cartridge
GXXX000546	Cascade Cable
GXXX001322	Residential Neutralizer - 1 unit
GXXX001323	Residential Neutralizer Replacement Media
GXXX001324	Light Commercial Neutralizer - up to 6 units
GXXX001328	Light Commercial Neutralizer Replacement Media
GXXX001325	Commercial Neutralizer - up to 16 units
GXXX001329	Commercial Neutralizer Replacement Media

Condensing Boilers



NCB Series Combi-Boilers

MODEL #	Description
NCB-150ENG	60,000 BTU/H space heating / 120,000 BTU/H DHW
NCB-180ENG	80,000 BTU/H space heating / 150,000 BTU/H DHW
NCB-210ENG	100,000 BTU/H space heating / 180,000 BTU/H DHW
NCB-240ENG	120,000 BTU/H space heating / 199,000 BTU/H DHW



NCB-240ENG

NFC Series Combi-Boilers

MODEL #	Description
NFC-175	175,000 BTU/H space heating / 199,900 BTU/H DHW
NFC-200	199,900 BTU/H space heating / 199,900 BTU/H DHW



NFC-200

Features:

- Field Convertible Gas System (LP kit included)
- Dual Stainless Steel Heat Exchangers
- PVC, CPVC, or Poly Propylene Venting
- Integrated Remote Control
- Stainless Steel DHW Plate Heat Exchanger
- 1/2" Gas Pipe Capable Up to 24'

NHB SERIES CONDENSING BOILERS

MODEL #	Description
NHB-55NG	8,000 - 55,000 BTU/H - AFUE 95.0% , Heating Capacity 51 MBH
NHB-80NG	8,000 - 80,000 BTU/H - AFUE 95.0% , Heating Capacity 74 MBH
NHB-110NG	10,000 - 110,000 BTU/H - AFUE 95.0% , Heating Capacity 102 MBH
NHB-150NG	10,000 - 150,000 BTU/H - AFUE 95.0% , Heating Capacity 138 MBH

NFB SERIES CONDENSING BOILERS

MODEL #	Description
NFB-175	8,000 - 175,000 BTU/H - AFUE 95.0% , Heating Capacity 175 MBH
NFB-200	19,900 - 199,900 BTU/H - AFUE 95.0% , Heating Capacity 183 MBH

Features:

- Industry's largest turn down ration 15:1
- 1/2" Gas Pipe Capable Up to 24'
- Dual Stainless Steel Heat Exchangers
- PVC, CPVC, or Poly Propylene Venting
- Integrated Remote Control

Condensing Boilers



ACCESSORIES

RMI Part No.	Description
30010950A	NAV Easy Valve Kit - 1" Isolation Valve Kit w/o Relief Valve
30012950A	Outdoor Sensor
GFFM-MCOZUS-001	Primary Manifold for NCB Series
30018662A	NCB Parts Kit
30018663A	NHB Parts Kit
GFFM-MSOZUS-001	Primary Manifold for NHB Series
GFFM-SKTZUS-001	Secondary Manifold for NHB Series
GXXX001417	External Temperature Sensor for NHB
PFMZ-02P-001	SmartZone+, 2 Zone Pump Controller
PFMZ-03P-001	SmartZone+, 3 Zone Pump Controller
PFMZ-04P-001	SmartZone+, 4 Zone Pump Controller
PFMZ-06P-001	SmartZone+, 6 Zone Pump Controller
30009323A	Plumb Easy Valve Set 3/4" with Relief Valve (lead free)
30012581A	Plumb Easy Valve Set 3/4" with Relief Valve
30010747A	2" Wall Flange and Vent Terminator Kit
30003873B	3" Wall Flange and Vent Terminator Kit
GXXX001326	PeakFlow Anti-Scale System
GXXX001327	PeakFlow Replacement Media Cartridge
GXXX000546	Cascade Cable (1- NCB with up to 15 - NPE units only)
GXXX001322	Residential Neutralizer - 1 unit
GXXX001323	Residential Neutralizer Replacement Media
GXXX001324	Light Commercial Neutralizer - up to 6 units
GXXX001328	Light Commercial Neutralizer Replacement Media
GXXX001325	Commercial Neutralizer - up to 16 units
GXXX001329	Commercial Neutralizer Replacement Media



NHB-1510NG



NFB-200

WATER HEATING APPLIANCES



GXXX001326



30009323A



Workman™ Convection Gas Heater

The Workman™ standard-duty portable convection heaters feature adjustable output control to save fuel, and a unique top design for superior heat distribution. L.B. White's Workman™ portable heaters provide 360° heating and do not require electricity.



Model	Description
WORKMAN 100N PLUS	NG 100MBH , piezo, s/s burner
WORKMAN 225 PLUS	LP 45-225MBH , piezo, s/s burner
NORSEMAN 250	LP 250MBH , pilot, cast iron burner
NORSEMAN 200 PLUS	LP 200MBH , piezo, cast iron burner
NORSEMAN 200 Horizontal	LP 200MBH Horizontal , pilot, cast burner

WORKMAN units have variable heat output

WORKMAN 100N PLUS runs on low pressure and does not include gas hose



Workman 225 PLUS

TRADESMAN® PORTABLE FORCED AIR HEATER

Engineered to deliver reliable, directional heat, L.B. White Tradesman® portable heaters feature a unique 3-trial ignition system, the industry's heaviest gauge combustion chamber and burner plate, and Self Diagnostic Service Saver models for convenient trouble-shooting. L.B. White has perfected every aspect of our portable construction heaters design to withstand harsh working environments.

Model	Description
TRADESMAN 125	LP 70-125MBH ,electronic spark ignition
TRADESMAN 170	LP 125-170MBH , electronic spark ignition
TRADESMAN 170N	NG 125-170MBH , electronic spark ignition
TRADESMAN 400	LP 250-400MBH , electronic spark ignition
TRADESMAN 170 ULTRA*	LP 125-170MBH , electronic spark ignition
TRADESMAN 170N ULTRA*	NG 125-170MBH , electronic spark ignition
TRADESMAN 400 ULTRA*	LP 250-400MBH , electronic spark ignition
TRADESMAN 400 ULTRA DF*	LP 250-400MBH , LP/NG Dual Fuel electronic spark ignition

Thermostat control is not available on the TRADESMAN 125

All other TRADESMAN units include thermostat

ULTRA model includes self diagnostic service



PREMIER® PORTABLE HEATER

These versatile portable heaters are great for applications for the temporary heating of buildings under construction, alteration, or repair.* Use Premier® heaters in construction applications where an enclosed flame is important, and low noise is necessary to improve communication

Model	Description
PREMIER 40	LP 40MBH, electronic spark ignition
PREMIER 80	LP 80MBH , electronic spark ignition
PREMIER 80 DF	LP/NG, Dual fuel, 80MBH , electronic spark ignition
PREMIER 170	LP 170MBH , electronic spark ignition
PREMIER 170 DF	LP/NG, Dual fuel, 170MBH , electronic spark ignition
PREMIER 350 DF	LP/NG, Dual fuel, 350MBH , electronic spark ignition

INCLUDES:

THERMOSTAT, HOSE and REGULATOR



Premier 80

GUARDIAN® FORCED AIR HEATERS

Model	Description
CLASSIC 60	LP 60MBH , pilot ignition, tri-shield case
CLASSIC 115	LP 115MBH , pilot ignition, tri-shield case

GUARDIAN 60	LP 30-60MBH , hot surface ignition, Tri-Shield case
GUARDIAN 60N	NG 30-60MBH , hot surface ignition, Tri-Shield case
GUARDIAN 100	LP 50-100MBH , hot surface ignition, Tri-Shield case
GUARDIAN 100N HSI	NG 50-100MBH , hot surface ignition, Tri-Shield case
GUARDIAN 250	LP 160-250MBH , hot surface ignition, standard case
GUARDIAN 250N HSI	NG 160-250MBH , hot surface ignition, standard case
GUARDIAN 250 PILOT	LP 160-250MBH , pilot ignition, standard case
GUARDIAN 250 SI	LP 160-250MBH , spark ignition, standard case
GUARDIAN 250N SI	NG 160-250MBH , spark ignition, standard case
GUARDIAN 325 HSI	LP 200-325MBH , hot surface ignition, standard case
GUARDIAN 325N HSI	NG 200-325MBH , hot surface ignition, standard case



classic 60



Guardian 100

THERMA GROW™ GREENHOUSE HEATERS

Model	Description
THERMA GROW 120	LP 120MBH , 115V, spark ignition
THERMA GROW 120 PLUS	LP 120MBH , two-stage, 115V, spark ignition
THERMA GROW 120N	NG 120MBH , 115V, spark ignition
THERMA GROW 120N PLUS	NG 120MBH , two-stage, 115V, spark ignition
THERMA GROW 220	LP 220MBH , 115 or 230V, spark ignition
THERMA GROW 220 PLUS	LP 220MBH , two-stage, 115 or 230V, spark ignition
THERMA GROW 220N	NG 220MBH , 115 or 230V, spark ignition
THERMA GROW 220N PLUS	NG 220MBH , two-stage, 115 or 230V, spark ignition



Therma Grow 220

Residential Hot Dawg® Series

Modine's Hot Dawg® garage heaters are ideal for heating home garages and workshops, yet durable enough for commercial spaces.



HD100A

LOW PROFILE POWER VENTED GARAGE HEATER

NG	Model	Description
N-	HD30A	30,000 btu's, 1 to 1 ½ car garage, low profile heater
N-	HD45A	45,000 btu's, 2 to 2 ½ car garage, low profile heater
N-	HD60A	60,000 btu's, 3 to 3 ½ car garage, low profile heater
N-	HD75A	75,000 btu's, Large garage, commercial and light industrial, low profile heater
N-	HD100A	100,000 btu's, Large garage, commercial and light industrial, low profile heater
N-	HD125A	125,000 btu's, Large garage, commercial and light industrial, low profile heater

LOW PROFILE SEPARATED COMBUSTION GARAGE HEATER

NG	Model	Description
N-	HDS30A	30,000 btu's, 1 to 1 ½ car garage, low profile heater
N-	HDS45A	45,000 btu's, 2 to 2 ½ car garage, low profile heater
N-	HDS60A	60,000 btu's, 3 to 3 ½ car garage, low profile heater
N-	HDS75A	75,000 btu's, Large garage, commercial and light industrial, low profile heater
N-	HDS100A	100,000 btu's, Large garage, commercial and light industrial, low profile heater
N-	HDS125A	125,000 btu's, Large garage, commercial and light industrial, low profile heater

Commercial Gas-Fired Heaters

The perfect way to efficiently heat an ample space such as a large pole barn or a commercial or industrial warehouse. Easy to use and time tested for quality and durability.



POWER VENTED UNIT HEATERS W/ INTERMITTENT PILOT

Model	Description
PDP150	150,000 btu's, Power vented unit heater w/intermittent pilot
PDP175	175,000 btu's, Power vented unit heater w/intermittent pilot
PDP200	200,000 btu's, Power vented unit heater w/intermittent pilot
PDP250	250,000 btu's, Power vented unit heater w/intermittent pilot
PDP300	300,000 btu's, Power vented unit heater w/intermittent pilot
PDP350	350,000 btu's, Power vented unit heater w/intermittent pilot
PDP400	400,000 btu's, Power vented unit heater w/intermittent pilot

* BOTH NATURAL GAS AND PROPANE UNITS AVAILABLE



PDP200LP

Call or visit our website for more models and availability

Construction Heaters

Convection Heaters

Model	Description
HS80CV	LP 30-80,000 btu's convection construction heater
HS100CVNG	NG 30-100,000 btu's convection construction heater
HS200CV	LP 75-200,00 btu's convection construction heater

FORCED AIR

Model	Description
HS35FA	LP 35,000 btu's Forced air construction heater
HS85FAV	LP 50-85,000 btu's Forced air construction heater
HS125FAV	LP 75-125,000 btu's Forced air construction heater
HS170FAVT	LP 125-170,000 btu's Forced air construction heater
HS170FAN	NG 125-170,000 btu's Forced air construction heater
HS400FAVT	LP 250-400,000 btu's Forced air construction heater

CORDLESS FORCED AIR MODELS

MH35CLP	LP 35,000 btu's with built-in battery and charger
HS60CLP	LP 60,000 btu's with built-in battery and charger

PORTABLE RADIANT

HS35LP	LP 35,000 btu's Portable radiant construction heater
HS125LP	LP 125,000 btu's Portable radiant construction heater
HS125NG	NG 125,000 btu's Portable radiant construction heater



HS200CBV



HS400FAVT



HS125LP



HS8060SPLP

Commercial Heaters

HIGH INTENSITY OVERHEAD INFRARED HEATERS

Model	Description
HS4040SPLP	LP, 40,000 btu's, automatic spark ignition
HS4040PPLP	LP, 40,000 btu's standing pilot
HS8060SPLP	LP, 60,000 btu's automatic spark ignition
HS8060PPLP	LP, 60,000 btu's standing pilot
HS9100SSPLP	LP, 100,000 btu's automatic spark ignition
HS9100SPPLP	LP, 100,000 btu's standing pilot
HS9120SPLP	LP, 120,000 btu's automatic spark ignition
HS9120PPLP	LP, 120,000 btu's standing pilot

** Replace "LP" for "NG" for Natural Gas models

Call or visit our website for more models and availability

Tel: 800-628-5044

WWW.RAYMURRAY.COM

Fax: 800-243-8341

Lee, MA

Bensalem, PA

Flint, MI

Goldsboro, NC

Outdoor Heaters

Bromic outdoor heaters are recognized all over the world for superior design and performance. From luxury hotels and leading restaurants to distinguished outdoor kitchens and exquisite backyards, Bromic outdoor heaters deliver the perfect balance of performance, reliability and beauty.

Tungsten Radiant Gas Heaters

Model	Description
TNG300-LP	Propane, 26,000 BTU, 3 burners
TNG300-NG	Natural Gas, 26,000 BTU, 3 burners
TNG500-LP	Propane, 43,000 BTU, 5 burners
TNG500-NG	Natural Gas, 43,000 BTU, 5 burners



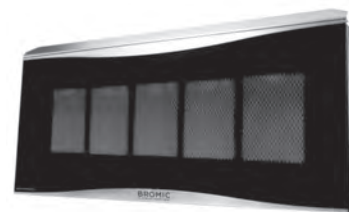
TNG500-LP

Accessories

RMI Part No.	Description
BH3030011	Universal low clearance deflector, 3 burner models
BH3030012	Universal low clearance deflector, 52 burner models
BH3030007	Universal ceiling mount, 33.31", can be cut.
BH3030008	Universal ceiling mount, 41.18", can be cut.

Platinum Radiant Gas Heaters

Model	Description
PLA300-LP	Propane, 23,600 BTU, 3 burners
PLA300-NG	Natural Gas, 23,600 BTU, 3 burners
PLA500-LP	Propane, 39,800 BTU, 5 burners
PLA500-NG	Natural Gas, 39,800 BTU, 5 burners



PLA500-LP

Accessories

RMI Part No.	Description
BH3030001-1	Universal low clearance SS deflector, 3 burner models
BH3030002-2	Universal low clearance SS deflector, 5 burner models
BH3030007	Universal ceiling mount, 33.31", can be cut.
BH3030008	Universal ceiling mount, 41.18", can be cut.

Universal Controllers

Model	Description
BH3130010	ON/OFF switch for Electric and Gas Heaters

LP Portable Heater

Model	Description
TNG-LP	Propane, 39,800 BTU, Portable Heaters



TNG-LP



10Kw - 30Kw Units Available



Standby Generators

Make sure your home or business is protected by a reliable backup power solution! With a Briggs & Stratton generator, you can rely on your lights, appliances or tools, air conditioner, TVs or computers to stay on during a power outage. Standby generators are permanently installed and connected to your home or business' natural gas line or liquid propane fuel source, along with the applicable transfer switch to support quick power generation. Check out the full line of standby generators available from the trusted experts at Briggs & Stratton

Call or visit our website for more models and availability



SkeeterVac Mosquito Vacuum Trap

Model	Description
SV3100	Up to 1 Acre of coverage
SV5100	Up to 1.5 Acre of coverage
CPSX000014	Fine tune biting insect lure
CPSX000021	Tac Trap Replacements (2)



*Unavailable until 2021
please inquiry with RMI for current
availability*



Pool and Spa Heaters



JXi Pool and Spa Heaters

An Ultra-Compact and Energy-Efficient Gas Pool Heater The JXi™ heater sets the standard in pool and spa heating with unsurpassed energy-efficiency and optional cost-saving Integrated Bypass technology that diverts water flow away from the heater when there is no call for heat. Boasting an 84% thermal efficiency rating and a low-NOx design, the JXi is available in both natural and propane gas models.

Model	Description
JXI200EP	LP, 200,000 btu's, hot surface ignition
JXI200EN	Nat, 200,000 btu's, hot surface ignition
JXI260EP	LP, 260,000 btu's, hot surface ignition
JXI260EN	Nat, 260,000 btu's, hot surface ignition
JXI400EP	LP, 400,000 btu's, hot surface ignition
JXI400EN	Nat, 400,000 btu's, hot surface ignition



JXI400EP

Jandy Pro Series Hi-E2 Swimming Pool Heaters

Jandy Pro Series Hi-E2 Swimming Pool Heater—Proven Performance. Proven Durability. The Hi-E2 sets the standard for pool heaters with a proven in-use record of over 20 years providing ultra-efficient heating with up to a 95% efficiency rating — which cuts operating costs by 15% or more*. Featuring a compact design, the Hi-E2 weighs in at 34% lighter than comparable heaters and with a 33% smaller footprint. The best option for retrofits, it's easy to install, allowing for flexible indoor installation with direct PVC pipe connections.

Model	Description
EHE-350PB	LP, 350,000 btu's Pool Heater
EHE-350PC	LP, 350,000 btu's, ASME, Dual Thermostat
EHE-350PC	LP, 350,000 btu's, ASME, Dual Thermostat, Salt Water
EHE-350NB	NG, 350,000 btu's, Pool Heater
EHE350NC	NG, 350,000 btu's, ASME, Dual Thermostat
EHE350NS	NG, 350,000 btu's, ASME, Dual Thermostat, Salt Water



EHE350PC



OUTDOOR FIRE PITS AND FIRE FEATURES AVAILABLE FROM RMI

VISIT WWW.RAYMURRAY.COM
FOR FULL SELECTION

AMERICAN
FYRE DESIGNS
Outdoor Fireplaces & Accessories

firegear
Outdoors

outdoor
lifestyles
by hearth & home technologies

WARMING TRENDS