



Pictured above: The new 20" Split Valley Oak with G8E Burner System (see page 2).

To Use This Price Sheet:

1. Select Burner System 2. Select Log Style Design or Glass Media (G21 Series Only) 3. Select Log Size 4. Select Controls & Accessories

Vent-Free Burner Systems

- G8E:** Burner System
- G9:** Burner System
- G9-2:** Burner System, See-Thru
- G10:** I-2000 Plus Burner System
- G10-SS:** Stainless Steel Burner System
- G18:** Burner System
- G18-2:** Burner System, See-Thru
- G19A:** Burner System
- G21:** Glass System
- G21-2:** Glass System, See-Thru

Purchase Info. Key

- For all model numbers: ** = Insert Size
- Price: \$
- Weight: #

Vent-Free Log Styles

- G8E STYLES**
 - **V08E:** Valley Oak
 - **SV08E:** Split Valley Oak
- G9 STYLES**
 - **RD9:** Golden Oak Designer
 - **RD9-2:** Golden Oak Designer, See-Thru
 - **S9:** Split Oak
 - **S9-2:** Split Oak, See-Thru
 - **M9:** Meadow Oak
 - **M9-2:** Meadow Oak, See-Thru
- G10 STYLES**
 - **CHFR:** Charred Frontier Oak
 - **CHAS:** Charred Aged Split
 - **CHAB:** Charred Alpine Birch
 - **CHGS:** Charred Gnarled Split
 - **GNO:** Gnarled Oak
- G18 STYLES**
 - **ECV:** Evening Fyre Charred
 - **ECV-2:** Evening Fyre Charred, See-Thru
 - **EFV:** Evening Fyre
 - **EFV-2:** Evening Fyre, See-Thru
 - **ESV:** Evening Fyre Split
 - **ESV-2:** Evening Fyre Split, See-Thru
- G19A STYLES**
 - **FT0:** Foothill Oak
 - **FTS0:** Foothill Split Oak

Fyre Glass & Fyre Gems (G21 Series)

- FYRE GLASS**
 - **GL-F:** Azuria
 - **GL-B:** Black
 - **GL-Z:** Bronze
 - **GL-N:** Caribbean Blue
 - **GL-C:** Clear
 - **GL-E:** Emerald
 - **GL-W:** Star Fyre
- REFLECTIVE FYRE GLASS**
 - **GL-FR:** Azuria Reflective
 - **GL-BR:** Black Reflective
 - **GL-ZR:** Bronze Reflective
 - **GL-NR:** Caribbean Blue Refl.
 - **GL-QR:** Copper Reflective
 - **GL-ER:** Emerald Reflective
 - **GL-HR:** Gold Reflective
 - **GL-CR:** Champagne Reflective
- FYRE GEMS**
 - **GLG-J:** Black Pearl
 - **GLG-T:** Blue Topaz
 - **GLG-D:** Champagne
 - **GLG-A:** Deep Amber
 - **GLG-E:** Emerald
 - **GLG-C:** Glacier
 - **GLG-S:** Sapphire
 - **GLG-RY:** Ruby

TABLE OF CONTENTS

DESCRIPTION	PAGE
G8E, G9, and G10 Series Vent-Free Systems	2
G18, G19A, and G21 Series Vent-Free Systems	3
Individual Vent-Free Gas Logs Only, Vent-Free Accessories and Replacement Parts	4

RHSPETERSON CO.

14724 Proctor Avenue • City of Industry, CA 91746 • Website: www.rhpeterson.com • (626) 369-5085 • Fax (626)369-5979

SUPERSEDES ALL OTHER PRICE LISTS • PRICES SUBJECT TO CHANGE WITHOUT NOTICE • ALL PRICES FOB FACTORY, TERMS: NET 30 DAYS

G8E Series Vent-Free System



G8E Burner



Valley Oak

G8E Series Gas Log Sets are ANSI Certified and Include: Vent Free Gas Logs • Decorative Front Panel • Certified Vent Free Burner with pre-assembled Control Valve and ODS Safety System • Custom Grate • Connector Kit.

Shipped for use w/ Natural Gas - specify if for Propane Gas by adding a "P" to the model number (e.g. G8E-16/20/24P).

G8E Series (Burners Only)

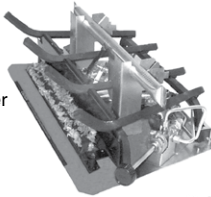
Description / wt.	Control	Model #	16"/20"/24"	
G8E Burner (20,000 BTU's) Weight: 12#	Manual	G8E-**-	\$511	
	On/Off Remote*	G8E-**-12	885	
	NEW Variable Remote*	G8E-**-15	969	
G8E Burner (9,500 BTU's) Weight: 12#	Manual	G8E-**-R	511	
	On/Off Remote*	G8E-**-R-12	885	

G8E Series (Gas Logs Only)

Description	Fireplace	Model #	16"	20"	24"
Valley Oak	Standard	VO8E-**-	\$298	\$338	\$376
			25#	29#	35#
Split Valley Oak	Standard	SV08E-**-	320	360	398
			#	#	#

G9 Series Vent-Free System

G9 Standard Burner



Split Oak



Meadow Oak

G9 Series Vent Free Gas Log Sets are ANSI Certified and Include: Vent Free Gas Logs • Certified Vent Free Burner with pre-assembled Control Valve and ODS Safety System • Custom Grate • Connector Kit • Glowing Embers • Bryte Coals • Lava-Fyre Granules.

Shipped for use w/ Natural Gas - specify if for Propane Gas by adding a "P" to the model number (e.g. G9-20/24/30P).

G9 Series (Burners Only)

Description / Wt.	Control	Model #	20"/24"/30"	
G9 Burner System Weight: 22-23#	Manual	G9-**-	\$699	
	On/Off Remote*	G9-**-12	1,072	
	Variable Remote*	G9-**-15	1,187	
G9 See-thru Burner System Weight: 36#	On/Off Remote*	G9-2-**-12	1,415	

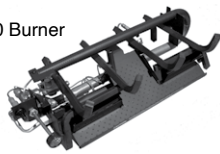
G9 Series (Gas Logs Only)

Description	Fireplace	Model #	20"	24"	30"
Golden Oak Designer	Standard	RD9-**-	\$291	\$316	\$397
			32#	35#	49#
	See Thru	RD9-2-**-	--	420	--
				50#	
Split Oak	Standard	S9-**-	314	343	429
			31#	34#	48#
	See Thru	S9-2-**-	--	468	--
				50#	
Meadow Oak	Standard	M9-**-	302	327	408
			#	#	#
	See Thru	M9-2-**-	--	435	--
				#	

G10 Series Vent-Free System

Featuring the Vent-Free I-2000 Plus Burner System

G10 Burner



Charred Alpine Birch



Charred Aged Split Oak



Charred Frontier Oak

G10 Series Vent Free Gas Log Sets are ANSI Certified and Include: Vent Free Gas Logs • Certified Vent Free Burner with pre-assembled Control Valve and ODS Safety System • Custom Grate • Connector Kit • Glowing Embers • Bryte Coals • Lava-Fyre Granules.

Shipped for use w/ Natural Gas - specify if for Propane Gas by adding a "P" to the model number (e.g. G10-24/30P).

G10 Series (Burners Only)

Description / Wt.	Control	Model #	16"/18"	24"/30"
G10 Burner System Weight: 16"/18" - 22-25# Weight: 24"/30" - 26-30#	Manual	G10-**-	\$877	\$980
	Variable Remote*	G10-**-15	1,346	1,449
	Electronic Remote*	G10-**-01V	1,710	1,813
G10 Burner System (Stainless Steel) Weight: 16"/18" - 22-25# Weight: 24"/30" - 26-30#	Manual	G10-**-SS	1,510	1,621
	Variable Remote*	G10-**-15-SS	1,983	2,094
	Electronic Remote*	G10-**-01V-SS	2,368	2,479

G10 Series (Gas Logs Only)

Description	Fireplace	Model #	16/18"	24"	30"
Charred Frontier Oak	Standard	CHFR-**-	\$364	\$416	\$517
			35#	41#	48#
Charred Aged Split	Standard	CHAS-**-	399	459	564
			35#	41#	48#
Charred Alpine Birch	Standard	CHAB-**-	467	526	625
			35#	41#	48#
Charred Gnarled Split	Standard	CHGS-**-	482	548	650
			35#	41#	48#
Gnarled Oak	Standard	GNO-**-	450	508	602
			35#	41#	48#

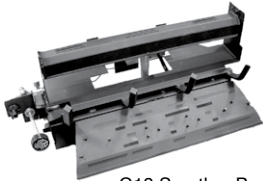
* Remote Systems include basic Transmitter and Receiver.

All Vent-Free sets packed in two cartons, to order: Select Burner System (i.e. **G10-24/30**) and then Gas Log Style (i.e. **CHFR-24**).

G18 Series Vent-Free System



Evening Fyre



G18 See-thru Burner



G18 Standard Burner

G18 Series Vent Free Gas Logs sets are ANSI certified and include: Vent Free Gas Logs • Certified Vent Free Burner with pre-assembled Control Valve and ODS Safety System • Custom Grate • Connector Kit • Glowing Embers • Brite Coals • Lava-Fyre Granules • Wood Chunks.
Shipped for use w/ Natural Gas - specify if for Propane Gas by adding a "P" to the model number (e.g. G18-24/30P).

G18 Series (Burners Only)

Description / Wt.	Control	Model #	16"/18"	24"/30"
G18 Burner System Weight: 26-30#	Manual	G18-**-	\$995	\$1,115
	Variable Remote*	G18-**-15	1,482	1,602
	Electronic Remote*	G18-**-01V	1,808	1,928
G18 See-thru Burner System Weight: 35-40#	Variable Remote*	G18-2-**-15	1,784	1,904

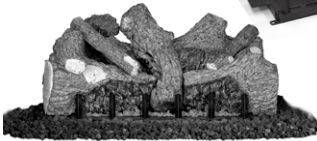
G18 Series (Gas Logs Only)

Description	Fireplace	Model #	16/18"	24"	30"
Evening Fyre Charred	Standard	ECV-**-	\$435 33#	\$497 38#	\$593 44#
	See-Thru	ECV-2-**-	552 45#	613 52#	--
Evening Fyre	Standard	EFV-**-	388 35#	441 41#	534 48#
	See-Thru	EFV-2-**-	497 50#	561 55#	--
Evening Fyre Split	Standard	ESV-**-	426 35#	486 41#	576 48#
	See-Thru	ESV-2-**-	538 50#	602 55#	--

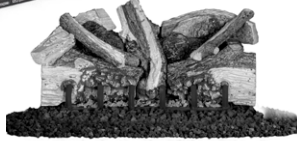
G19A Series Vent-Free System



G19A Burner



Foothill Oak



Foothill Split Oak

G19A Series Vent-Free Gas Logs sets are ANSI Certified and include: Uniquely Designed Vent-Free Gas Logs • Certified Vent Free Burner with pre-assembled Remote Control Valve & ODS Safety System • Custom Grate • Connector Kit • Glowing Embers • Lava Granules.
Shipped for use w/ Natural Gas - specify if for Propane Gas by adding a "P" to the model number (e.g. G19A-24/30-15P).

G19A Series (Burners Only)

Description / Wt.	Control	Model #	18"/20"	24"/30"
G19A Burner System Weight: 18"/20" - 30# Weight: 24"/30" - 36#	Variable Remote*	G19A-**-15	\$1,494	\$1,572
	Electronic Remote*	G19A-**-01V	1,817	1,895

G19A Series (Gas Logs Only)

Description	Fireplace	Model #	18"	24"	30"
Foothill Oak	Standard	FTO-**-	\$398 33#	\$449 50#	\$541 60#
Foothill Split Oak	Standard	FTSO-**-	433 33#	491 50#	589 54#

G21 Series Vent-Free System



G21 Standard Burner

G21 Series Glass Burner with On/Off Remote

Description	Trim	Model #	18"	24"	30"
G21 Glass Burner Weight: 20-30#	Standard	G21-GL-**-12	\$1,486	\$1,602	\$1,670
G21 Glass Burner (See-Thru) Weight: 25-35#	Standard	G21-GL-2-**-12	1,741	1,866	--

G21 Series Vent-Free Glass sets are ANSI certified and include: Stainless Steel Certified Vent-Free Burner with pre-assembled Remote Control Valve and ODS Safety System • Polished Reflective Panel • See-Thru includes Glass Front Panels.
Shipped for use w/ Natural Gas - specify if for Propane Gas by adding a "P" to the model number (e.g. G21-GL-24-12P).
Amount of glass required is 7½ lbs for 18", 10 lbs for 24", and 15 lbs for 30".
(18" See-Thru 10 lbs & 24" See-Thru 12½ lbs).

Fyre Glass	10 lb. Package \$103	40 lb. Bucket \$414
Azuria	GL-10-F	GL-40-F
Black	GL-10-B	GL-40-B
Bronze	GL-10-Z	GL-40-Z
Caribbean Blue	GL-10-N	GL-40-N
Clear	GL-10-C	GL-40-C
Emerald	GL-10-E	GL-40-E
Star Fyre	GL-10-W	GL-40-W



Refl. Fyre Glass	10 lb. Package \$114	40 lb. Bucket \$451
Azuria Reflective	GL-10-FR	GL-40-FR
Black Reflective	GL-10-BR	GL-40-BR
Bronze Reflective	GL-10-ZR	GL-40-ZR
Caribbean Blue Refl.	GL-10-NR	GL-40-NR
Copper Reflective	GL-10-QR	GL-40-QR
Emerald Reflective	GL-10-ER	GL-40-ER
Gold Reflective	GL-10-HR	GL-40-HR
Champagne Reflective	GL-10-CR	GL-40-CR



Fyre Gems	10 lb. Package \$87	40 lb. Bucket \$343
Black Pearl	GLG-10-J	GLG-40-J
Blue Topaz	GLG-10-T	GLG-40-T
Champagne	GLG-10-D	GLG-40-D
Deep Amber	GLG-10-A	GLG-40-A
Emerald	GLG-10-E	GLG-40-E
Glacier	GLG-10-C	GLG-40-C
Sapphire	GLG-10-S	GLG-40-S
Ruby	GLG-10-RY	GLG-40-RY

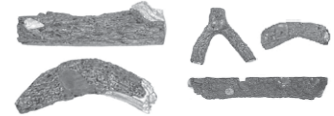


Individual Vent-Free Gas Logs Only



2024

To Order: Specify Log Style and then Size (i.e. CHFRL-20BR)



G8E Series	LOGS STYLE (Top & Bottom)	No.	8tl	8ty	10tl	11tr	12br	16bf	20bf	24bf
	Valley Oak	VOL8E	\$46	46	48	55	88	101	147	195

G9 Series	LOGS STYLE (Top & Bottom)	No.	8tr-2	8t-2	10ty-2	9ty	10tc	10tr	10ty	11t	11tl	17br	20bf	20br	24bf	24bf-2	30bf
	Golden Oak Designer	RDL9	\$44	45	45	47	47	47	51	--	51	88	133	133	146	146	190
Split Oak	SL9	\$46	48	48	51	51	51	57	51	57	97	140	140	149	149	197	

G10 Series	LOGS STYLE (Top & Bottom)	No.	6tc	7t	8t	9t	9tr	10t	10tl	10tr	11t	11tl	11tr	12tr	12tl	13t	14tr	15tl	15br	16/18bf	19br	20br	21br	24bf	24br	30bf
	Charred Frontier Oak	CHFRL	\$44	46	--	--	48	51	--	--	--	53	--	64	64	--	77	77	102	133	--	147	--	158	158	196
	Charred Aged Split	CHASL	\$47	49	--	53	53	57	--	57	--	58	--	68	68	--	82	82	108	140	--	156	--	163	163	199
Charred Alpine Birch	CHABL	--	--	\$60	62	--	--	75	75	65	71	71	--	--	77	--	--	156	163	168	--	181	184	--	205	

G18 Series Top Logs	LOGS STYLE (Top)	No.	8t	9t	10t	11tr	12t	12tl	12ty	13t	13ty	17ty	-2-11ty	-2-9t	-2-10t	-2-12t
	Evening Fyre Charred	ECVL	--	\$63	64	68	77	77	--	79	79	113	79	65	68	82
	Evening Fyre	EFVL	--	\$62	62	62	67	67	--	74	74	104	68	60	62	71
Evening Fyre Split	ESVL	\$60	62	63	67	74	--	77	--	--	108	77	63	65	78	

G18 Series Bottom Logs	LOGS STYLE (Bottom)	No.	15br	18bf	20br	24bf	24br	30bf	-2-18B1	-2-18B2	-2-24BF
	Evening Fyre Charred	ECVL	\$118	148	159	173	173	234	148	148	173
	Evening Fyre	EFVL	\$108	140	148	160	160	222	140	140	160
Evening Fyre Split	ESVL	\$115	146	156	167	167	227	146	146	167	

G19A Series Top Logs	LOGS STYLE (Top)	No.	7t	8t	9t	10t	10tl	10tr	11t	12t	12tc	13t	13tr	14t	15t
	Foothill Oak	FTOL	--	\$60	62	63	63	--	64	65	--	74	--	--	92
Foothill Split Oak	FTSOL	\$53	60	62	63	--	63	--	67	77	74	74	87	--	

G19A Series Bottom Logs	LOGS STYLE (Bottom)	No.	17br	18bf	22br	23br	24bf	30bf
	Foothill Oak	FTOL	\$113	167	151	160	174	245
Foothill Split Oak	FTSOL	\$113	167	151	--	174	245	

Vent-Free Accessories & Replacement Parts

A. Vent Free Valve & Control Body Options

MODEL	DESCRIPTION	PRICE
SV-18	Valve for G8E Manual - (Natural or Propane)	\$145
SV-26	Valve for G9, G10 & G18 Manual - (Natural)	118
SV-27	Valve for G9, G10 & G18 Manual - (Propane)	118
SV-24	Control Body for G10-15 & G18-15 - (Natural)	377
SV-25	Control Body for G10-15P & G18-15P - (Propane)	377
SV-8	Control Body for Remote Style (-12) G8E & G9 - (N.G.)	305
SV-8P	Control Body for Remote Style (-12P) G8E & G9 - (L.P.)	305
SV-43	Control Body for Remote Style (-12) G21 - (Natural)	305
SV-43P	Control Body for Remote Style (-12P) G21 - (Propane)	305
SV-42	Control Body for Variable Remote Style (01V) G10 & G18	435
SV-41	Control Body for Variable Remote Style (01VP) G10 & G18	435
SV-51	Control Body for G19A-15 - (Natural)	377
SV-51P	Control Body for G19A-15P - (Propane)	377
SV-46	Control Body for G19A-01V - (Natural)	464
SV-46P	Control Body for G19A-01VP - (Propane)	464

B. Remote Compatible Options

MODEL	DESCRIPTION	PRICE
RR-1A	Basic ON/OFF Receiver/Transmitter Set	\$123
RR-2A	Deluxe ON/OFF Receiver/Transmitter Set	179
VR-1A	Basic Variable Receiver/Transmitter Set for "15" models	149
VR-2A	Deluxe Variable Receiver/Transmitter Set for "15" models	204
WCDC-1	Wood Chunk Decorative Cover (Vacuum packed)	52
PCDC-1	Pine Cone Decorative Cover (Vacuum packed)	56
WCBC-1	Charred Birch Decorative Cover (Vacuum packed)	62
WCAB-1	Charred Birch Decorative Wood Chunk	62
RF-BTSR1-G	ON/OFF Bluetooth Control w/ Golden Oak Cover ("12" Product Only)	234
RF-BTSR1-B	ON/OFF Bluetooth Control w/ White Birch Cover ("12" Product Only)	240
TS-12	Thermostat Control ("12" Product Only)	85
WS-1	Wall Switch, Cover and Wiring ("12" Product Only)	71
WS-2	Wall Timer, Cover and Wiring ("12" Product Only)	174
WS-3	Wall Switch, Cover and Wiring ("15" Product Only)	87
WS-6	Wall Switch ("01V" Product Only)	148
TR-03	Power Supply ("01V" Product Only)	134

C. Accessories

MODEL	DESCRIPTION	PRICE
DP-2-6	Valley Oak Wood Chips (4) and Pine Cones (3) (vacuum packed, case of 6)	\$445
PC-4-6	4 Designer Pine Cones (assorted sizes, vacuum packed, case of 6)	328
WC-6-6	6 Wood Chips (vacuum packed, case of 6)	393
WCH-6-6	6 Charred Wood Chips (vacuum packed, case of 6)	440
AC-6-6	6 Acorns (vacuum packed, case of 6)	281
LFC-6	Lava Fyre Coals - Wt. 6#	32
LF-5	Lava Fyre Granules - Wt. 5#	25
VFRK-1	Refresh Kit (Incl.: 5# lava granules, Ember Glow, Bryte Coals & 6 Acorns)	86

D. Three-Panel Fyrebacks

DESCRIPTION	SIZE	FYREBACK MODEL #		PRICE
		Traditional	Contemporary	
Three-Panel Fyrebacks Satin Stainless	S	FBS-18	FBC-18	\$128
	M	FBS-24	FBC-24	146
	L	FBS-30	FBC-30	162
Three-Panel Fyrebacks Polished Stainless Steel	XL	FBS-36	FBC-36	179
	S	FBSP-18	FBCP-18	196
	M	FBSP-24	FBCP-24	206
Three-Panel Fyrebacks Black Porcelain	L	FBSP-30	FBCP-30	220
	XL	FBSP-36	FBCP-36	273
	S	FBSB-18	FBCB-18	198
Three-Panel Fyrebacks	M	FBSB-24	FBCB-24	214
	L	FBSB-30	FBCB-30	237
	XL	FBSB-36	FBCB-36	276

E. Oxygen Depletion Sensor / Repl. Embers

MODEL	DESCRIPTION	PRICE
ODS-0001	Natural Gas	\$69
ODS-0002	Propane Gas	69
ODS-0003	Natural Gas with "12" Valve	134
ODS-0004	Propane Gas with "12" Valve	134
EM-9	Replacement Embers (G9)	20
EM-10	Replacement Embers (G10, G18, & G19A)	23

Robert H. Peterson Co.

14724 E Proctor Ave., City of Industry, CA. 91746
Tel: (626) 369-5085 • Fax: (626) 369-5979