



MASON-LITE

by MFI • Masonry Fireplace Industries, Inc.

Manufacturers of Modular Masonry

2025

Pricing

&

Ordering Information

Revision 12/6/2024 Effective 1/1/2025

800-628-5044 / raymurray.com
mason-lite.com

Highlighted = RMI STOCKING SKU

Table of Contents	Page
<u>Mason-Lite</u> Fireplaces	3
Standard Fire Box Kits	3
Virginiana Burners	3
Virginiana Lucent Burners	3
Regal Fire Box Kits	3
<u>Mason-Lite Gas Only Standard</u> Fireplaces	4
B-Vent Standard Fire Box Kits	4
Vent-Free Standard Fire Box Kits	4
Virginiana Vent Free Burners	4
<u>Mason-Lite</u> Custom Fireplaces	4
<u>Mason-Lite</u> Accessories	5
Combustion Air Kits	5
Fireplace Tools	5
Arches	5
Mortar	5
Height Kit	5
Metal Bases	5
Steel Throat Dampers	6
Cast Iron Dampers	6
Damper Blocks	6
PureBurn (EPA Phase 2)	6
<u>Mason-Lite</u> True Fire Brick Panels	7-8
<u>Mason-Lite</u> Linear Firebox Kits	9-10
B-Vent Linear Firebox Kits	9
Linear Vented Burners	10
<u>Mason-Lite</u> Linear Vent Free Firebox Kits	11
Linear Vent Free Burners	11
<u>Mason-Lite</u> Masonry Chimney Systems	12
<u>Mason-Lite</u> Pizza Ovens	12
<u>Mason-Lite</u> Fire Features	12
<u>Architectural Clay by MFI</u> Clay Tops	13
<u>Mason-Lite</u> Chimney Shrouds	14
<u>Duravent</u> DuraChimney II (12", 14", 16")	15-16
<u>Duravent</u> B-Vent Pipe (10" & 12") & Anchor Plate Draft Hoods	16
<u>Energex</u> Chimney Fans	17
<u>KW</u> Chimney Fans	18
<i>Replacement Parts</i>	19-20
<i>Chimney Sizing Chart</i>	21
<i>Firebrick & Mortar per Unit Chart</i>	22

Mason-Lite Standard Fire Boxes

- Standard kits come complete with Mortar, Angle Iron or T-Bar.
- Sizes listed are raw box dimensions. Finished dimensions are 3" less when lined with fire brick.



		RETAIL	Crated
Mason-Lite Wood Burning or Gas Firebox Kits (Unit Multiplier)		Price/Ea	Weight (Lbs.)
MFP75	75" FIREBOX KIT - Use Dual 14" Class A UL103 Chimney	\$11,698	2825
MFP63	63" FIREBOX KIT - Use 16" Class A UL103 Chimney	\$8,031	2652
MFP49	49" FIREBOX KIT - Use 14" Class A UL103 Chimney	\$5,450	1958
MFP44	44" FIREBOX KIT - Use 12" Class A UL103 Chimney	\$5,057	1757
MFP39	39" FIREBOX KIT - Use 12" Class A UL103 Chimney	\$4,668	1614
MFPST43	43" SEE-THRU FIREBOX KIT - Use 16" Class A UL103 Chimney	\$6,061	1631
MFP33	33" FIREBOX KIT - Use 12" Class A UL103 Chimney	\$3,447	1337



Note: Must install fire brick to complete installation.

Optional Vented Virginiana Decorative Gas Logs (Misc. Multiplier)

Electronic Ignition with Remote , match light avail. upon request

VG18-NG	18" Virginiana Decorative Gas Logs and NG Burner for use with MFP39	\$2,006	80
VG18-LP	18" Virginiana Decorative Gas Logs and LP Burner for use with MFP39	\$2,099	80
VG24-NG	24" Virginiana Decorative Gas Logs and NG Burner for use with MFP39	\$2,334	100
VG24-LP	24" Virginiana Decorative Gas Logs and LP Burner for use with MFP39	\$2,425	100
VG30-NG	30" Virginiana Decorative Gas Logs and NG Burner for use with MFP44	\$2,635	141
VG30-LP	30" Virginiana Decorative Gas Logs and LP Burner for use with MFP44	\$2,727	141
VG36-NG	36" Virginiana Decorative Gas Logs and NG Burner for use with MFP49	\$3,071	173
VG36-LP	36" Virginiana Decorative Gas Logs and LP Burner for use with MFP49	\$3,162	173
VGST30-NG	30" See Thru Virginiana Dec. Gas Logs and NG Burner for use with MFPST43	\$3,396	236
VGST30-LP	30" See Thru Virginiana Dec. Gas Logs and LP Burner for use with MFPST43	\$3,488	236
VGXL48-NG	48" JUMBO Virginiana Dec. Gas Logs and NG Burner for use with MFP63	\$7,570	410
VGXL48-LP	48" JUMBO Virginiana Dec. Gas Logs and LP Burner for use with MFP63	\$7,685	410



Optional Vented Virginiana Lucent Decorative Gas Logs (Misc. Multiplier)

•Electronic Ignition with Remote

VGLC18-VEN	18" Virginiana Lucent Decorative Gas Logs and NG Burner for use with MFP39	\$3,029	67
VGLC18-VEP	18" Virginiana Lucent Decorative Gas Logs and LP Burner for use with MFP39	\$3,164	67
VGLC24-VEN	24" Virginiana Lucent Decorative Gas Logs and NG Burner for use with MFP39	\$3,238	80
VGLC24-VEP	24" Virginiana Lucent Decorative Gas Logs and LP Burner for use with MFP39	\$3,372	80
VGLC30-VEN	30" Virginiana Lucent Decorative Gas Logs and NG Burner for use with MFP44	\$3,701	93
VGLC30-VEP	30" Virginiana Lucent Decorative Gas Logs and LP Burner for use with MFP44	\$3,835	93
VGLC36-VEN	36" Virginiana Lucent Decorative Gas Logs and NG Burner for use with MFP49	\$4,182	112
VGLC36-VEP	36" Virginiana Lucent Decorative Gas Logs and LP Burner for use with MFP49	\$4,315	112



Mason-Lite Regal Wood Burning Boxes

- Must use full firebrick sourced locally. Please note instruction manual for clearance differences.
- Height Kit and Mortar Included
- T-Bar/Angle Iron NOT Included

Mason-Lite Regal Wood Burning Boxes (Unit Multiplier)

MFP72-RGL	72" x 38.5" FIREBOX KIT - Use Dual 14" Class A UL103 Chimney	\$13,451	3385
MFP84-RGL	84" x 38.5" FIREBOX KIT - Use Dual 16" Class A UL103 Chimney	\$15,694	3794
MFP96-RGL	96" x 38.5" FIREBOX KIT - Use Dual 16" Class A UL103 Chimney	\$17,936	4185
MFP108-RGL	108" x 38.5" FIREBOX KIT - Use Triple 14" Class A UL103 Chimney	\$20,178	4475
MFP120-RGL	120" x 38.5" FIREBOX KIT - Use Triple 14" Class A UL103 Chimney	\$22,420	4900

Note: Must install fire brick to complete installation.

Mason-Lite Standard B-Vent Fire Boxes *Gas Burning Only*

- Includes Burner, Log Set and Split Switch
- Units Come Standard NG, LP available upon request
- T-Bar and Mortar Included

Gas B-Vent Firebox Kits (Unit Multiplier)

		RETAIL Price/Ea	Crated Weight (Lbs.)
MGFPST43	43" SEE-THRU FIREBOX KIT w/ 30" NG Burner & Virginia Gas Logs - uses 12"B-Vent	\$12,361	1881
MGFP49	49" FIREBOX KIT w/ 36" NG Burner and Virginia <u>Lucent</u> Gas Logs - Uses 10" B-Vent	\$11,257	2158
MGFP44	44" FIREBOX KIT w/ 30" NG Burner and Virginia <u>Lucent</u> Gas Logs - Uses 10" B-Vent	\$10,269	1932
MGFP39	39" FIREBOX KIT w/ 24" NG Burner and Virginia <u>Lucent</u> Gas Logs - Uses 10" B-Vent	\$9,367	1764



Note: Must install fire brick to complete installation.

Mason-Lite Standard Vent Free Fire Boxes *Gas Burning Only*

- T-Bar and Mortar Included
- Use with any Approved Vent Free Log Set

Vent Free Firebox Kits (Unit Multiplier)

MFP49VF	49" Vent Free FIREBOX KIT	\$4,463	1608
MFP44VF	44" Vent Free FIREBOX KIT	\$4,013	1457
MFP39VF	39" Vent Free FIREBOX KIT	\$3,533	1349
MFPST43VF	43" See-Thru Vent Free FIREBOX KIT	\$4,386	1314

Note: Must install fire brick to complete installation.

Optional Virginia Vent Free Gas Logs (Misc. Multiplier)

- Electronic Ignition with Remote

VGVF24-NG	Virginia Vent Free Gas Logs and NG Burner for use with MFP39VF	\$2,181	73
VGVF24-LP	Virginia Vent Free Gas Logs and LP Burner for use with MFP39VF	\$2,181	73
VGVF30-NG	Virginia Vent Free Gas Logs and NG Burner for use with MFP44VF	\$2,268	81
VGVF30-LP	Virginia Vent Free Gas Logs and LP Burner for use with MFP44VF	\$2,268	81



Custom **Mason-Lite** Fireplaces Available



Design services available for custom fireplaces including linear, Rumford Style, See Thru, 3-sided, island and corner configuration. These custom units are ready to assemble and require little to no further modification on site. Please visit Mason-Lite.com/customorder

Mason-Lite Accessories

Combustion Air Kits (Accessory Multiplier)

- Closable Fire Box Inlet, that Fits Pre-Cut Hole in Firebox Included
- 3' Flexible Vent Conduit and Plastic Outdoor Hood Included
- If using Firebrick Panels, a hole must be cut to accommodate air kit



Combustion Air Kits (Accessory Multiplier)

		RETAIL Price/Ea	Weight
MFP4-AK-M	4" Combustion Air Kit - 3' Flexible Vent and Metal Hood	\$349	7 lbs
MFPST-AK-M	4" Combustion Air Kit for MFPST43 and Linear Units - 3' Flexible Vent & Metal Hood	\$349	7 lbs

Fireplace Tools (Accessory Multiplier)

MFPT-DTP-R	Deluxe Drop Tine Fire Poker Fireplace Tool - Right Handed	\$278	5 lbs
MFPT-DTP-L	Deluxe Drop Tine Fire Poker Fireplace Tool - Left Handed	\$278	5 lbs



Masonry Arches (Accessory Multiplier)

- This option must be cut to size and fitted in per installation instructions.

MFP-ARC	Masonry Arch - Fits up to and Including MFP49	\$416	42 lbs
MFP-ARC63	Masonry Arch - Fits MFP63	\$652	60 lbs



Refractory Mortar (Accessory Multiplier)

- Included with Firebox Kits

MFP530	50 LBS. BUCKET DRY MORTAR	\$236	50 lbs
--------	---------------------------	-------	--------

Height Kits - Increases Opening by 8" (Accessory Multiplier)

- Includes Firebox Sections to Increase Face Height by 8"
- Must use Extended Brick Panels with Height Kit
- Flue Size May Need to be Increased

MFP75-HK	Height Kit Includes (1) MFP75-2, (1) MFP75-2A & (2) MFP75-3	\$1,421	279 lbs
MFP63-HK	Height Kit Includes (1) MFP63-2, (1) MFP63-2A & (2) MFP63-3	\$1,198	255 lbs
MFP49-HK	Height Kit Includes (1) MFP49-2 & (2) MFP49-3	\$710	239 lbs
MFP44-HK	Height Kit Includes (1) MFP44-2 & (2) MFP44-3	\$693	228 lbs
MFP39-HK	Height Kit Includes (1) MFP39-2 & (2) MFP39-3	\$664	219 lbs
MFPST43-HK	Height Kit Includes (2) MFP43ST-3	\$577	162 lbs
MFP33-HK	Height Kit Includes (1) MFP33-2 & (2) MFP33-3	\$629	215 lbs



Metal Bases (Accessory Multiplier)

- For use with Wood Burning Fireplaces being Installed on a Combustible Floor
- Includes Insulation Blanket, All Thread, Brackets and (2) Cement Boards per base
- Additional Mounting Hardware may be Required Depending Upon the Installation

MFPB63	8" Structural Metal Base for 63" Firebox	\$2,324	219 lbs
MFPB49	6" Structural Metal Base for 49" Firebox	\$1,856	140 lbs
MFPB44	6" Structural Metal Base for 44" Firebox	\$1,571	128 lbs
MFPB43	8" Structural Metal Base for 43" See-Thru Firebox	\$1,741	115 lbs
MFPB39	6" Structural Metal Base for 39" Firebox	\$1,431	103 lbs
MFPB33	6" Structural Metal Base for 33" Firebox	\$1,260	85 lbs



Mason-Lite Accessories cont.

Steel Throat Dampers (Accessory Multiplier)

- Designed for Mason-Lite Fireplaces

- Damper Blocks Not Necessary

		RETAIL	
		Price/Ea	Weight
MFP-SD63	63" Steel Throat Damper - for MFP63	\$1,538	109 lbs
MFP-SD49	49" Steel Throat Damper - for MFP49	\$726	89 lbs
MFP-SD44	44" Steel Throat Damper - for MFP44	\$645	82 lbs
MFP-SD39	39" Steel Throat Damper - for MFP39	\$575	75 lbs
MFP-SD33	33" Steel Throat Damper - for MFP33	\$506	60 lbs



Note: Cast Iron Dampers and Blocks available upon request.

PureBurn EPA Phase II Qualified Burner (Misc Multiplier)

- Dual Fuel Fireplace System

- No Catalytic Converter Necessary

- Electronic Ignition Offered for Safety

QWBN-44	NG PureBurn Grate/Burner Set - for MFP44 and MFP49	\$2,703	18 lbs
QWBP-44	LP PureBurn Grate/Burner Set - for MFP44 and MFP49	\$2,703	18 lbs
QWBN-33	NG PureBurn Grate/Burner Set - for MFP33 and MFP39	\$2,026	14 lbs
QWBP-33	LP PureBurn Grate/Burner Set - for MFP33 and MFP39	\$2,026	14 lbs
QWBN-63	NG PureBurn Grate/Burner Set - for MFP63	\$3,869	26 lbs
QWBP-63	LP PureBurn Grate/Burner Set - for MFP63	\$3,869	26 lbs
QWB-EI	Optional Electronic Ignition for use with Pureburn Unit	\$585	3 lbs



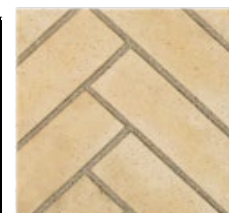
Mason-Lite Real Brick Panels & Fire Brick

- Made with Real Fire Brick
- Panels are available in Cream, Black and Gold
- Designate Brick Color by adding - C for Cream, -B for Black, -G for Gold
- Brick Panels are not Available for Linear or Regal Models or MFP75
- Available for Fireboxes Ordered with Optional Height Kit, see -X Models

Split Herringbone Brick Panels (Brick Size Approx. 2.25" x 9") (Accessory Multiplier)

• Must add a -C for cream, -B for black or -G for gold to the part number.

		RETAIL Price/Ea	Weight
MFP63SHBL	Herringbone Brick Panels, 63" FP (-C cream, -B black, -G gold)	\$4,425	563 lbs
MFP49SHBL	Herringbone Brick Panels, 49" FP (-C cream <u>STOCK</u> , -B black <u>STOCK</u> , -G gold)	\$3,007	474 lbs
MFP44SHBL	Herringbone Brick Panels, 44" FP (-C cream <u>STOCK</u> , -B black <u>STOCK</u> , -G gold)	\$2,867	418 lbs
MFP39SHBL	Herringbone Brick Panels, 39" FP (-C cream <u>STOCK</u> , -B black <u>STOCK</u> , -G gold)	\$2,703	395 lbs
MFP33SHBL	Herringbone Brick Panels, 33" FP (-C cream, -B black, -G gold)	\$2,419	334 lbs
MFPST43SHBL	Herringbone Brick Panel, 43" See-Thru FP (-C cream, -B black, -G gold)	\$3,007	412 lbs



Split Herringbone
(shown in cream)

Split Running Bond Brick Panels (Brick Size Approx. 2.25" x 9") (Accessory Multiplier)

• Must add a -C for cream, -B for black or -G for gold to the part number.

MFP63SRBL	Split Running Bond Brick Panels, 63" FP (-C cream, -B black, -G gold)	\$4,425	563 lbs
MFP49SRBL	Split Running Bond Brick Panels, 49" FP (-C cream, -B black, -G gold)	\$3,007	474 lbs
MFP44SRBL	Split Running Bond Brick Panels, 44" FP (-C cream, -B black, -G gold)	\$2,867	418 lbs
MFP39SRBL	Split Running Bond Brick Panels, 39" FP (-C cream, -B black, -G gold)	\$2,703	395 lbs
MFP33SRBL	Split Running Bond Brick Panels, 33" FP (-C cream, -B black, -G gold)	\$2,419	334 lbs
MFPST43SRBL	Split Running Bond Brick Panels, 43" See-Thru FP (-C cream, -B black, -G gold)	\$3,007	412 lbs



Split Running Bond
(shown in Black)

Full Running Bond Brick Panels (Brick Size Approx. 4.5" x 9") (Accessory Multiplier)

• Must add a -C for cream, -B for black or -G for gold to the part number.

MFP63FRBL	Full Running Bond Brick Panels, 63" FP (-C cream, -B black, -G gold)	\$4,153	602 lbs
MFP49FRBL	Full Running Bond Brick Panels, 49" FP (-C cream <u>STOCK</u> , -B black <u>STOCK</u> , -G gold)	\$2,703	498 lbs
MFP44FRBL	Full Running Bond Brick Panels, 44" FP (-C cream <u>STOCK</u> , -B black <u>STOCK</u> , -G gold)	\$2,596	448 lbs
MFP39FRBL	Full Running Bond Brick Panels, 39" FP (-C cream <u>STOCK</u> , -B black <u>STOCK</u> , -G gold)	\$2,458	430 lbs
MFP33FRBL	Full Running Bond Brick Panels, 33" FP (-C cream, -B black, -G gold)	\$2,207	364 lbs
MFPST43FRBL	Full Running Bond Brick Panel, 43" See-Thru FP (-C cream, -B black, -G gold)	\$2,703	414 lbs



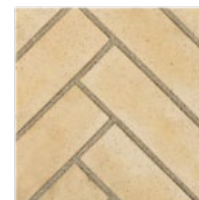
Full Running Bond
(shown in cream)

Mason-Lite Real Brick Panels & Fire Brick cont.

Must use Extended Brick Panels if you purchased an Optional Height Kit with your Firebox Kit.

EXTENDED Split Herringbone Brick Panels (Brick Size Approx. 2.25" x 9") (Accessory Multiplier)

		RETAIL	
•Must add a -C for cream, -B for black or -G for gold to the part number.		Price/Ea	Weight
MFP63SHBL-X	8" Extended Herringbone Brick Panels, 63" Fireplace w. Height Kit	\$5,310	676 lbs
MFP49SHBL-X	8" Extended Herringbone Brick Panels, 49" Fireplace w. Height Kit (-C cream STOCK, -B black STOCK)	\$3,609	569 lbs
MFP44SHBL-X	8" Extended Herringbone Brick Panels, 44" Fireplace w. Height Kit (-C cream STOCK, -B black STOCK)	\$3,441	502 lbs
MFP39SHBL-X	8" Extended Herringbone Brick Panels, 39" Fireplace w. Height Kit (-C cream STOCK, -B black STOCK)	\$3,244	474 lbs
MFP33SHBL-X	8" Extended Herringbone Brick Panels, 33" Fireplace w. Height Kit	\$2,903	401 lbs
MFPST43SHBL-X	8" Extended Herringbone Brick Panels, 43" See Thru Fireplace w. HK	\$3,609	494 lbs



Split Herringbone
(shown in cream)

EXTENDED Split Running Bond Brick Panels (Brick Size Approx. 2.25" x 9") (Accessory Multiplier)

•Must add a -C for cream, -B for black or -G for gold to the part number.			
MFP63SRBL-X	8" Extended Split Running Bond Brick Panels, 63" FP w. Height Kit	\$5,310	676 lbs
MFP49SRBL-X	8" Extended Split Running Bond Brick Panels, 49" FP w. Height Kit	\$3,609	569 lbs
MFP44SRBL-X	8" Extended Split Running Bond Brick Panels, 44" FP w. Height Kit	\$3,441	502 lbs
MFP39SRBL-X	8" Extended Split Running Bond Brick Panels, 39" FP w. Height Kit	\$3,244	474 lbs
MFP33SRBL-X	8" Extended Split Running Bond Brick Panels, 33" FP w. Height Kit	\$2,903	401 lbs
MFPST43SRBL-X	8" Extended Split Running Bond Brick Panel, 43" See-Thru FP w. Height Kit	\$3,609	494 lbs



Split Running Bond
(shown in Black)

EXTENDED Full Running Bond Brick Panels (Brick Size Approx. 4.5" x 9") (Accessory Multiplier)

•Must add a -C for cream, -B for black or -G for gold to the part number.			
MFP63FRBL-X	8" Extended Full Running Bond Brick Panels, 63" FP w. Height Kit	\$4,984	722 lbs
MFP49FRBL-X	8" Extended Full Running Bond Brick Panels, 49" FP w. Height Kit	\$3,244	598 lbs
MFP44FRBL-X	8" Extended Full Running Bond Brick Panels, 44" FP w. Height Kit	\$3,115	538 lbs
MFP39FRBL-X	8" Extended Full Running Bond Brick Panels, 39" FP w. Height Kit	\$2,949	516 lbs
MFP33FRBL-X	8" Extended Full Running Bond Brick Panels, 33" FP w. Height Kit	\$2,649	436 lbs
MFPST43FRBL-X	8" Extended Full Running Bond Brick Panel, 43" See-Thru FP w. Height Kit	\$3,244	496 lbs



Full Running Bond
(shown in cream)

Mason-Lite Firebrick by the Pallet

Firebrick by the Pallet (Color may vary between pallets) (Accessory Multiplier)

NOTE: Split size is not the same size as the brick in "split" brick panels above

MFP-FBPT-G	Gold Full Sized Firebrick (Approx. 4.5" x 9" x 2.5" Brick Size) - 332/Pallet	\$5,034	2536 lbs
MFP-SBPT-G	Gold Split Sized Firebrick (Approx. 4.5" x 9" x 1.25" Brick Size) - 664/Pallet	\$6,945	2536 lbs
MFP-FBPT-B	Black Full Sized Firebrick (Approx. 4.5" x 9" x 2.5" Brick Size) - 336/Pallet	\$5,034	2620 lbs
MFP-SBPT-B	Black Split Sized Firebrick (Approx. 4.5" x 9" x 1.25" Brick Size) - 648/Pallet	\$6,945	2620 lbs
MFP-FBPT-C	Cream Full Sized Firebrick (Approx. 4.5" x 9" x 2.5" Brick Size) - 304/Pallet	\$5,034	2679 lbs
MFP-SBPT-C	Cream Split Sized Firebrick (Approx. 4.5" x 9" x 1.25" Brick Size) - 1008/Pallet	\$10,541	4117 lbs

Mason-Lite B-Vent Linear Fireboxes & Burners

- "Trough" Models Conceal either the Opalescence Linear Burner with LED Light Combo or Alpine Linear Burner
- "No Trough" Models are for Applications that Require more Burner Flexibility. Accepts Traditional "H" Burners and Logsets.
- Includes Mortar
- Angle Iron is required, must source locally
- Use MFPST-AK-M if Outside Air Kit is Needed
- Uses 12" B-Vent

Linear B-Vent Firebox Kits (Unit Multiplier)

		RETAIL	Weight
•NO Trough		Price/Ea	Approx.
LMFP36-NT	36" B-Vent Linear Gas FIREBOX KIT - No Trough	\$7,493	1758
LMFP48-NT	48" B-Vent Linear Gas FIREBOX KIT - No Trough	\$9,272	2056
LMFP60-NT	60" B-Vent Linear Gas FIREBOX KIT - No Trough	\$10,437	2293
LMFP72-NT	72" B-Vent Linear Gas FIREBOX KIT - No Trough	\$15,180	2633
LMFP84-NT	84" B-Vent Linear Gas FIREBOX KIT - No Trough	\$17,245	3030
LMFP96-NT	96" B-Vent Linear Gas FIREBOX KIT - No Trough	\$19,258	3204
LMFP108-NT	108" B-Vent Linear Gas FIREBOX KIT - No Trough	\$21,043	3440
LMFP120-NT	120" B-Vent Linear Gas FIREBOX KIT - No Trough	\$22,636	3805

Note: Must install fire brick to complete installation.

•With Trough

LMFP36	36" B-Vent Linear Gas FIREBOX KIT - With Trough	\$8,291	2134
LMFP48	48" B-Vent Linear Gas FIREBOX KIT - With Trough	\$10,259	2324
LMFP60	60" B-Vent Linear Gas FIREBOX KIT - With Trough	\$11,554	2757
LMFP72	72" B-Vent Linear Gas FIREBOX KIT - With Trough	\$16,824	3109
LMFP84	84" B-Vent Linear Gas FIREBOX KIT - With Trough	\$19,117	3344
LMFP96	96" B-Vent Linear Gas FIREBOX KIT - With Trough	\$21,345	3699
LMFP108	108" B-Vent Linear Gas FIREBOX KIT - With Trough	\$23,328	4118
LMFP120	120" B-Vent Linear Gas FIREBOX KIT - With Trough	\$25,098	4565

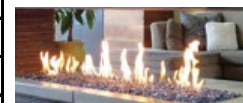
Note: Must install fire brick to complete installation.

Mason-Lite Linear B-Vent Fireboxes & Burners cont.

Opalescence Linear Burners (Misc Multiplier)

- Use with Linear Units with Burner Trough
- Includes Case, Burner SIT Control with Remote, LED's with Remote / App

		RETAIL Price/Ea	Weight Approx.
LMB36L-EN	36" NG Linear Drop-In Burner with LED Lights, use with LMFP36	\$3,282	36
LMB36L-EP	36" LP Linear Drop-In Burner with LED Lights, use with LMFP36	\$3,412	36
LMB48L-EN	48" NG Linear Drop-In Burner with LED Lights, use with LMFP48	\$3,513	50
LMB48L-EP	48" LP Linear Drop-In Burner with LED Lights, use with LMFP48	\$3,643	50
LMB60L-EN	60" NG Linear Drop-In Burner with LED Lights, use with LMFP60	\$3,770	61
LMB60L-EP	60" LP Linear Drop-In Burner with LED Lights, use with LMFP60	\$3,900	61
LMB72L-EN	72" NG Linear Drop-In Burner with LED Lights, use with LMFP72	\$3,990	71
LMB72L-EP	72" LP Linear Drop-In Burner with LED Lights, use with LMFP72	\$4,120	71
LMB84L-EN	84" NG Linear Drop-In Burner with LED Lights, use with LMFP84	\$4,196	83
LMB84L-EP	84" LP Linear Drop-In Burner with LED Lights, use with LMFP84	\$4,326	83
LMB96L-EN	96" NG Linear Drop-In Burner with LED Lights, use with LMFP96	\$4,427	92
LMB96L-EP	96" LP Linear Drop-In Burner with LED Lights, use with LMFP96	\$4,557	92



Choose Optional Driftwood Logs and Glass Media to Complete Installation (Misc Multiplier)

OPS48-LOGS	48" Driftwood Linear 9 PCS- Logs Only	\$524	45
OPS60-LOGS	60" Driftwood Linear 11 PCS- Logs Only	\$773	73
OPS72-LOGS	72" Driftwood Linear 13 PCS- Logs Only	\$855	81
OPS84-LOGS	84" Driftwood Linear 16 PCS- Logs Only	\$1,054	101
OPS96-LOGS	96" Driftwood Linear 18 PCS- Logs Only	\$1,245	125
OPS-GLS-CL	1/2" Clear Reflective Fireglass 10 Lbs. (5lbs. Per foot)	\$60	10



Opalescence Lumiere Logset and Vented Burners (Misc Multiplier)

- Use with Linear Units with Burner Trough
- Includes Case, Burner SIT Control with Remote, LED's with Remote / App

LMB48L-LUM-EN	48" NG Lumiere Logset Drop-In Burner with LED Lights, use with LMFP48	\$3,507	65
LMB48L-LUM-EP	48" LP Lumiere Logset Drop-In Burner with LED Lights, use with LMFP48	\$3,507	65
LMB60L-LUM-EN	60" NG Lumiere Logset Drop-In Burner with LED Lights, use with LMFP60	\$4,159	81
LMB60L-LUM-EP	60" LP Lumiere Logset Drop-In Burner with LED Lights, use with LMFP60	\$4,159	81
LMB72L-LUM-EN	72" NG Lumiere Logset Drop-In Burner with LED Lights, use with LMFP72	\$4,610	93
LMB72L-LUM-EP	72" LP Lumiere Logset Drop-In Burner with LED Lights, use with LMFP72	\$4,610	93



Alpine Linear Vented Burners (Misc Multiplier)

- Use with LMFP Units with Burner Trough
- Includes Skytech Hi/Lo Remote
- Use with Descorative Glass, Sand or Vermiculite
- Spark to Pilot Valve

ALB30N-STP	30" Alpine Natural Gas Linear Burner, use with LMFP36	\$2,594	N/A
ALB30L-STP	30" Alpine Propane Linear Burner, use with LMFP36	\$2,594	N/A
ALB42N-STP	42" Alpine Natural Gas Linear Burner, use with LMFP48	\$3,236	N/A
ALB42L-STP	42" Alpine Propane Linear Burner, use with LMFP48	\$3,236	N/A
ALB48N-STP	48" Alpine Natural Gas Linear Burner, use with LMFP60	\$3,359	N/A
ALB48L-STP	48" Alpine Propane Linear Burner, use with LMFP60	\$3,359	N/A
ALB60N-STP	60" Alpine Natural Gas Linear Burner, use with LMFP72	\$3,506	N/A
ALB60L-STP	60" Alpine Propane Linear Burner, use with LMFP72	\$3,506	N/A
ALB72N-STP	72" Alpine Natural Gas Linear Burner, use with LMFP84	\$4,962	N/A
ALB72L-STP	72" Alpine Propane Linear Burner, use with LMFP84	\$4,962	N/A
ALB84N-STP	84" Alpine Natural Gas Linear Burner, use with LMFP96	\$6,147	N/A
ALB84L-STP	84" Alpine Propane Linear Burner, use with LMFP96	\$6,147	N/A
ALB96N-STP	96" Alpine Natural Gas Linear Burner, use with LMFP108	\$6,392	N/A
ALB96L-STP	96" Alpine Propane Linear Burner, use with LMFP108	\$6,392	N/A
ALB108N-STP	108" Alpine Natural Gas Linear Burner, use with LMFP120	\$6,393	N/A
ALB108L-STP	108" Alpine Propane Linear Burner, use with LMFP120	\$6,393	N/A



Mason-Lite Linear Vent Free Fireboxes & Burners

We have designed our models to with a trough conceal our Opalescence Linear Vent Free burner with LED light combo.

Linear Vent Free Firebox Kits (Unit Multiplier)

- Use MFPST-AK-M if Outside Airkit is needed
- Includes Mortar

RETAIL Crated
Price/Ea Weight

LMFP24-VF	24" Linear Vent Free Gas FIREBOX KIT with Burner Trough	\$4,514	1547
LMFP36-VF	36" Linear Vent Free Gas FIREBOX KIT with Burner Trough	\$5,891	1895
LMFP48-VF	48" Linear Vent Free Gas FIREBOX KIT with Burner Trough	\$7,300	2056
LMFP60-VF	60" Linear Vent Free Gas FIREBOX KIT with Burner Trough	\$8,261	2464

Note: Must install fire brick to complete installation.

Must Order Burner and Media to Complete Installation.

Opalescence Linear Vent Free Burners (Misc Multiplier)

- Use with Linear Vent Free Units with Burner Trough
- Includes Case, Burner, SIT Control with Remote, LED Light with Remote / App

VFLDB24L-EN	24" NG Linear Drop-In Burner with LED Lights, For use with LMFP24-VF	\$3,088	N/A
VFLDB24L-EP	24" LP Linear Drop-In Burner with LED Lights, For use with LMFP24-VF	\$3,088	N/A
VFLDB36L-EN	36" NG Linear Drop-In Burner with LED Lights, For use with LMFP36-VF	\$3,282	N/A
VFLDB36L-EP	36" LP Linear Drop-In Burner with LED Lights, For use with LMFP36-VF	\$3,282	N/A
VFLDB48L-EN	48" NG Linear Drop-In Burner with LED Lights, For use with LMFP48-VF	\$3,513	N/A
VFLDB48L-EP	48" LP Linear Drop-In Burner with LED Lights, For use with LMFP48-VF	\$3,513	N/A
VFLDB60L-EP	60" NG Linear Drop-In Burner with LED Lights, For use with LMFP60-VF	\$3,770	N/A
VFLDB60L-EN	60" LP Linear Drop-In Burner with LED Lights, For use with LMFP60-VF	\$3,770	N/A
OPS-GLS-CL	1/2" Clear Reflective Fireglass 10 Lbs. (5lbs. Per foot)	\$60	10



Mason-Lite Chimney Systems/Components

- Mason-Lite Refractory Chimney System may be used on MFP33, MFP39, FP44 and MFP49 with a max. system height of 30' without added support
- The MFPST43, MFP63 and MFP75 would need to be ordered specially to use dual 14" Mas. Chimney and would have a max. system height of 20'

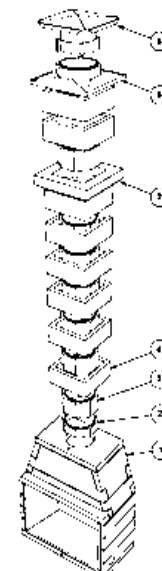
Mason-Lite Masonry Chimney System Kits (Accessory Multiplier)

- MCLS-814-16K 16' System Includes: (1) MCL-414, (24) MCL-814, (24) MCS-814 and 2-50lbs. Refractory Mortar
- MCLS-814K 8' System Includes: (1) MCL-414, (12) MCL-814, (12) MCS-814 and 50lbs. Refractory Mortar
- MCLS-814P 4' System Includes: (1) MCL-414, (6) MCL-814, (6) MCS-814 and 50lbs. Refractory Mortar

		<u>RETAIL</u>	<u>Weight</u>
MCLS-814-16K	Mason-Lite 16' System	\$3,035	2410 lbs
MCLS-814K	Mason-Lite 8' System	\$1,676	1225 lbs
MCLS-814P	Mason-Lite 4' Patio System	\$1,123	731 lbs

Mason-Lite Masonry Chimney Individual Components (Accessory Multiplier)

MCL-814	Inner Liner (Individual) 14" ID x 8" H	\$67	32 lbs
MCS-814	Outer Liner (Individual) 8" H	\$81	61 lbs
MCL-414	Inner Liner Starter (Individual) 14" ID x 4" H	\$48	14 lbs
MCSBL-814	Brick Ledge 4" H - NON-STOCK	\$349	72 lbs
MCSOS-814	Offset Elbow (30 Degrees) 14" ID x 4" H	\$224	90 lbs
MCL-CAP	Mason-Lite Chimney Cap	\$266	12 lbs
MCL-CAP-SS	Mason-Lite Chimney Cap Stainless Steel	\$388	8 lbs
MCL-CAP-C	Mason-Lite Chimney Cap Copper	\$1,200	8 lbs
MCS-CWN	Mason-Lite Chimney Crown	\$546	95 lbs
MC14-AP	14" Anchor Plate/Damper - use with Mason-Lite Chimney Only	\$369	15 lbs



Mason-Lite Pizza Ovens

Mason-Lite Masonry Pizza Oven (Accessory Multiplier)

MPO-18	18" Toscana Pizza Oven - Inc. 16" Tall Mas. Chim., Firebrick Panels	\$2,811	625 lbs
MPO-18WS	Toscana Pizza Oven Wood Storage	\$2,208	588 lbs
MPO-18D	Toscana Pizza Oven Door	\$991	18 lbs
MPO-24	24" Toscana Golia Pizza Oven - Inc. 16" Tall Mas. Chim., Firebrick Panels	\$6,278	1699 lbs
MPO-24WS	Toscana Golia Oven Wood Storage	\$4,030	1161 lbs
MPO-24D	Toscana Golia Pizza Oven Door	\$1,578	35 lbs



Mason-Lite Fire Features

Mason-Lite Square Fire Features (Accessory Multiplier)

FFS36	36" Square Fire Feature	\$1,379	TBD
FFS42	42" Square Fire Feature	\$1,729	TBD
FFS48	48" Square Fire Feature	\$2,079	TBD

Mason-Lite Linear Fire Features (Accessory Multiplier)

FFL36	36" Linear Fire Feature	\$1,449	TBD
FFL48	48" Linear Fire Feature	\$1,799	TBD
FFL60	60" Linear Fire Feature	\$2,253	TBD
FFL72	72" Linear Fire Feature	\$2,707	TBD
FFL96	96" Linear Fire Feature	\$3,615	TBD
FFL120	120" Linear Fire Feature	\$4,523	TBD

Architectural Clay Tops by MFI

Architectural Clay Pots for Mason-Lite Firebox (Misc. Multiplier)

- Come Standard in Terra Cotta color, also available in Salt, Black, Brown, Gray, Buff Clay for additional \$150
- Pot Tops available for additional charge, available in Stainless Steel and Copper, additional \$50 for color top

See Brouchure for sizing, rain guard available upon request.

		RETAIL Price/Ea	Weight
1410	St Augustine	\$1,163	110 lbs
1429	Lexington	\$1,485	153 lbs
1433	Plymouth 21	\$1,200	92 lbs
1434	Plymouth 31	\$1,464	130 lbs
1427	Monticello	\$931	68 lbs
1432	Chesapeake 21	\$1,015	115 lbs
1430	Chesapeake 31	\$1,398	157 lbs
1438	Bristol	\$1,050	102 lbs
1472	Princeton 33	\$1,564	147 lbs
1472E	Burlington 33	\$1,730	163 lbs
1477	Burlington 45	\$2,851	288 lbs
1477T	Burlington 60	\$3,151	334 lbs
1481	Hampton 21 - Brushed	\$915	95 lbs
1489	Hampton 21 - Smooth Finish	\$915	95 lbs
1480	Hampton 31 - Brushed	\$1,097	142 lbs
1490	Hampton 31 - Smooth Finish	\$1,097	142 lbs
1478	Hampton XL26 - Brushed	\$1,580	223 lbs
1478PL	Hampton XL26 - Smooth Finish	\$1,580	223 lbs



Mason-Lite Premium Chimney Shrouds

Mason Lite's Decorative steel and copper chimney pots offer an alternative to unsightly factory flue caps and terminations. Available in 4 designs and in 4 colors of painted Kynar steel or in solid 16 oz. Copper, Mason Lite offers a chimney pot for any exterior.

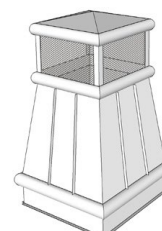
		RETAIL	
Mason-Lite Chimney Shrouds - Dover (20" x 20" I.D. & 36" height) (Misc. Multiplier)		Price/Ea	Weight
SHDP6- NC	Dover Chimney Shroud - Natural Copper	\$2,175	200 lbs
SHDP6-MB	Dover Chimney Shroud - Matte Black	\$1,416	200 lbs
SHDP6-DB	Dover Chimney Shroud - Dark Bronze	\$1,416	200 lbs
SHDP6-SG	Dover Chimney Shroud - Storm Grey	\$1,416	200 lbs



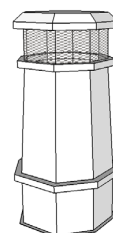
Mason-Lite Chimney Shrouds - Sussex (20" I.D. & 40" height) (Misc. Multiplier)			
SHDP8-NC	Sussex Chimney Shroud - Natural Copper	\$2,175	200 lbs
SHDP8-MB	Sussex Chimney Shroud - Matte Black	\$1,416	200 lbs
SHDP8-DB	Sussex Chimney Shroud - Dark Bronze	\$1,416	200 lbs
SHDP8-SG	Sussex Chimney Shroud - Storm Grey	\$1,416	200 lbs



Mason-Lite Chimney Shrouds - Arlington (20" x 20" I.D. & 32" height) (Misc. Multiplier)			
SHDP9-NC	Arlington Chimney Shroud - Natural Copper	\$2,175	200 lbs
SHDP9-MB	Arlington Chimney Shroud - Matte Black	\$1,416	200 lbs
SHDP9-DB	Arlington Chimney Shroud - Dark Bronze	\$1,416	200 lbs
SHDP9-SG	Arlington Chimney Shroud - Storm Grey	\$1,416	200 lbs



Mason-Lite Chimney Shrouds - Charleston (20" I.D. & 40" height) (Misc. Multiplier)			
SHDP10-NC	Charleston Style Chimney Shroud - Natural Copper	\$2,175	200 lbs
SHDP10-MB	Charleston Style Chimney Shroud - Matte Black	\$1,416	200 lbs
SHDP10-DB	Charleston Style Chimney Shroud - Dark Bronze	\$1,416	200 lbs
SHDP10-SC	Charleston Style Chimney Shroud - Storm Grey	\$1,416	200 lbs



Must Order Adapter Separately to Ship Assembled to Shroud

Mason-Lite Chimney Shrouds - Accessories (Misc. Multiplier)			
SHDPA12	12" Adapter	\$288	20 lbs
SHDPA14	14" Adapter	\$288	20 lbs
SHDPA16	16" Adapter	\$288	20 lbs

Class A Air-Cooled Chimney System for Masonry Fireplaces



		RETAIL	
12" Pipe & Acc. -For use w/ MFP44, MFP39, MFP33, & Custom Units (DuraVent Multiplier)		Price/Ea	Weight
12DCA-12	12" Chimney Pipe	\$181.90	10 lbs
12DCA-18	18" Chimney Pipe	\$216.39	10 lbs
12DCA-36	36" Chimney Pipe	\$332.43	21 lbs
12DCA-48	48" Chimney Pipe	\$388.88	24 lbs
12DCA-AP	Anchor Plate	\$535.33	12 lbs
12DCA-APD	Anchor Plate w/ Damper	\$906.34	27 lbs
12DCA-CTF	Chase Top Flashing	\$446.11	4 lbs
12DCA-E15	15 Deg. Elbow	\$363.79	9 lbs
12DCA-E30	30 Deg. Elbow	\$363.79	9 lbs
12DCA-ES	Elbow Strap	\$195.39	5 lbs
12DCA-FS	Firestop	\$100.36	4 lbs
12DCA-IS	Attic Insulation Shield	\$746.39	5 lbs
12DCA-RRS	Roof Radiation Shield	\$171.59	10 lbs
12DCA-SC	Storm Collar	\$64.29	5 lbs
12DCA-SS	Supplementary Support	\$343.16	5 lbs
12DCA-ST	Stabilizer	\$116.67	5 lbs
12DCA-VC1	Chimney Cap	\$533.14	18 lbs
12DCA-WS	Wall Strap	\$203.85	5 lbs

14" Pipe & Acc. -For use w/ MFP49, MFP39-14, MFP44-14, & Custom Units (DuraVent Multiplier)

14DCA-12	12" Chimney Pipe	\$200.71	9 lbs
14DCA-18	18" Chimney Pipe	\$235.21	12 lbs
14DCA-36	36" Chimney Pipe	\$388.88	24 lbs
14DCA-48	48" Chimney Pipe	\$417.10	24 lbs
14DCA-AP	Anchor Plate	\$422.13	15 lbs
14DCA-APD	Anchor Plate w/ Damper	\$987.87	19 lbs
14DCA-CTF	Chase Top Flashing	\$316.75	15 lbs
14DCA-E15	15 Deg. Elbow	\$398.30	19 lbs
14DCA-E30	30 Deg. Elbow	\$398.29	19 lbs
14DCA-ES	Elbow Strap	\$200.21	5 lbs
14DCA-FS	Firestop	\$109.76	1 lbs
14DCA-IS	Attic Insulation Shield	\$777.75	12 lbs
14DCA-RRS	Roof Radiation Shield	\$108.55	4 lbs
14DCA-SC	Storm Collar	\$69.00	3 lbs
14DCA-SS	Supplementary Support	\$206.98	6 lbs
14DCA-ST	Stabilizer	\$96.09	3 lbs
14DCA-VC1	Chimney Cap	\$624.09	23 lbs
14DCA-WS	Wall Strap	\$210.12	7 lbs

Class A Air-Cooled Chimney System for Masonry Fireplaces



16" Pipe & Acc.-For use w/ MFP63, MFPST43 & Custom Units (DuraVent Multiplier)		RETAIL Price/Ea	Weight
16DCA-12	12" Chimney Pipe	\$225.80	12 lbs
16DCA-18	18" Chimney Pipe	\$279.11	13 lbs
16DCA-36	36" Chimney Pipe	\$435.92	28 lbs
16DCA-48	48" Chimney Pipe	\$453.17	31 lbs
16DCA-AP	Anchor Plate	\$617.70	17 lbs
16DCA-APD	Anchor Plate w/ Damper	\$1,050.60	26 lbs
16DCA-CTF	Chase Top Flashing	\$754.95	15 lbs
16DCA-E15	15 Deg. Elbow	\$617.70	23 lbs
16DCA-E30	30 Deg. Elbow	\$435.92	23 lbs
16DCA-ES	Elbow Strap	\$205.03	5 lbs
16DCA-FS	Firestop	\$114.48	5 lbs
16DCA-IS	Attic Insulation Shield	\$784.03	12 lbs
16DCA-RRS	Roof Radiation Shield	\$514.74	4 lbs
16DCA-SC	Storm Collar	\$69.00	3 lbs
16DCA-SS	Supplementary Support	\$356.89	6 lbs
16DCA-ST	Stabilizer	\$192.17	5 lbs
16DCA-VC1	Chimney Cap	\$715.03	24 lbs
16DCA-WS	Wall Strap	\$312.87	7 lbs

B-Vent Chimney System

10" Round Gas Vent (DuraVent Multiplier)		RETAIL Price/Ea	Weight
10BV12-1	12" Length Round Rigid Pipe	\$221.72	4 lbs
10BV18-1	18" Length Round Rigid Pipe	\$240.88	7 lbs
10BV24-1	24" Length Round Rigid Pipe	\$305.03	8 lbs
10BV36-1	36" Length Round Rigid Pipe	\$340.95	12 lbs
10BV18A-1	18" Length Adjustable Pipe	\$364.18	6 lbs
10BVL45-1	45° Adj. Elbow (individually)	\$330.34	6 lbs
10BVFSP	Firestop Support Plate	\$178.92	5 lbs
10BVSC	Storm Collar	\$36.37	1 lbs
10BVVT-1	High-Wind Cap	\$387.20	7 lbs
MFP-10DH	10" Anch. Plate/Draft Hood	\$658.00	6 lbs

12" Round Gas Vent (DuraVent Multiplier)			
12BV12-1	12" Length Round Rigid Pipe	\$277.44	5 lbs
12BV18-1	18" Length Round Rigid Pipe	\$313.92	8 lbs
12BV24-1	24" Length Round Rigid Pipe	\$277.44	10 lbs
12BV36-1	36" Length Round Rigid Pipe	\$476.08	12 lbs
12BV18A-1	18" Length Adjustable Pipe	\$370.04	8 lbs
12BVL45-1	45° Adj. Elbow (individually)	\$385.29	6 lbs
12BVFSP	Firestop Support Plate	\$247.52	7 lbs
12BVSC	Storm Collar	\$41.60	1 lbs
12BVVT-1	High-Wind Cap	\$545.31	8 lbs
MFP-12DH	12" Anch. Plate/Draft Hood	\$676.00	8 lbs

Enervex Fans & Accessories

		RETAIL Price/Ea	Weight
Chimney Fans (Misc Multiplier)			
EXH0022	RS 012 Fan & FSC5 Ctrl	\$4,871	37 lbs
EXH0023	RS 014 Fan & FSC5 Ctrl	\$5,236	47 lbs
EXH0024	RS 016 Fan & FSC5 Ctrl	\$7,604	61 lbs
EXHT0022	HTRS 012 Fan & FSC5 Ctrl	\$5,711	34 lbs
EXHT0023	HTRS 014 Fan & FSC5 Ctrl	\$6,140	42 lbs
EXHT0024	HTRS 016 Fan & FSC5 Ctrl	\$8,915	47 lbs



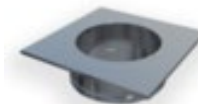
Chimney Fan Controls (Misc Multiplier)			
EXH1126-5	FSC5, Fan Speed Control	\$117	3 lbs
EXH1126-15	FSC15, Fan Speed Control 15Amp Control	\$611	3 lbs
ADC100	Universal Control	\$1,411	3 lbs
ADC150	Modulating Control	\$2,967	3 lbs



Chimney Fan Adapters for Air Cooled Pipe (Misc Multiplier)			
FR3010A	10" Steel Chimney Adapter for RS 012 and RS 014 for Air Cooled Pipe	\$807	N/A
FR3012A	12" Steel Chimney Adapter for RS 012 and RS 014 for Air Cooled Pipe	\$807	N/A
FR3014A	14" Steel Chimney Adapter for RS 012 and RS 014 for Air Cooled Pipe	\$807	N/A
FR3016A	16" Steel Chimney Adapter for RS 012 and RS 014 for Air Cooled Pipe	\$807	N/A
FR4010A	10" Steel Chimney Adapter for RS 016 for Air Cooled Pipe	\$807	N/A
FR4012A	12" Steel Chimney Adapter for RS 016 for Air Cooled Pipe	\$807	N/A
FR4014A	14" Steel Chimney Adapter for RS 016 for Air Cooled Pipe	\$807	N/A
FR4016A	16" Steel Chimney Adapter for RS 016 for Air Cooled Pipe	\$807	N/A



Chimney Fan Adapters for Insulated Pipe & B-Vent (Misc Multiplier)			
FR3010	10" Steel Chimney Adapter for RS 012 and RS 014 for Insulated Pipe	\$750	N/A
FR3012	12" Steel Chimney Adapter for RS 012 and RS 014 for Insulated Pipe	\$750	N/A
FR3014	14" Steel Chimney Adapter for RS 012 and RS 014 for Insulated Pipe	\$750	N/A
FR3016	16" Steel Chimney Adapter for RS 012 and RS 014 for Insulated Pipe	\$750	N/A
FR4010	10" Steel Chimney Adapter for RS 016 for Insulated Pipe	\$750	N/A
FR4012	12" Steel Chimney Adapter for RS 016 for Insulated Pipe	\$750	N/A
FR4014	14" Steel Chimney Adapter for RS 016 for Insulated Pipe	\$750	N/A
FR4016	16" Steel Chimney Adapter for RS 016 for Insulated Pipe	\$750	N/A



Mechanical Fireplace Damper (Used with ADC100 or ADC150) (Gas Burning Only) (Misc Multiplier)			
EXH2810-24	10" MFD for RS 09 and RS 012 24V	\$3,344	N/A
EXH2810-120	10" MFD for RS 09 and RS 012 120V	\$3,344	N/A
EXH2812-24	12" MFD for RS 09 and RS 012 24V	\$3,570	N/A
EXH2812-120	12" MFD for RS 09 and RS 012 120V	\$3,570	N/A
EXH2910-24	10" MFD for RS 014 and RS 016 24V	\$3,570	N/A
EXH2910-120	10" MFD for RS 014 and RS 016 120V	\$3,570	N/A
EXH2912-24	12" MFD for RS 014 and RS 016 24V	\$3,816	N/A
EXH2912-120	12" MFD for RS 014 and RS 016 120V	\$3,816	N/A
EXH2914-24	14" MFD for RS 014 and RS 016 24V	\$3,943	N/A
EXH2914-120	14" MFD for RS 014 and RS 016 120V	\$3,943	N/A
EXH2916-24	16" MFD for RS 014 and RS 016 24V	\$4,346	N/A
EXH2916-120	16" MFD for RS 014 and RS 016 120V	\$4,346	N/A



Slip Ring For MFD Using Air Cooled Pipe (Misc Multiplier)			
ENE2930	10" Slip Ring For Air Cooled Chimney using Mech.Fireplace Dampers	\$418	N/A
ENE2932	12" Slip Ring For Air Cooled Chimney using Mech. Fireplace Dampers	\$418	N/A
ENE2934	14" Slip Ring For Air Cooled Chimney using Mech. Fireplace Dampers	\$418	N/A
ENE2936	16" Slip Ring For Air Cooled Chimney using Mech. Fireplace Dampers	\$418	N/A

KW Fans & Accessories

		RETAIL	
Chimney Fans (Misc Multiplier)		Price/Ea	Weight
RSD150	RSD150 Fan & FSC.00 Fan Speed control	\$3,954	37 lbs
RSD250	RSD250 Fan & FSC.00 Fan Speed control	\$4,446	47 lbs
RSD350	RSD350 Fan & FSC.00 Fan Speed control	\$5,920	61 lbs



Chimney Fan Controls (Misc Multiplier)			
FSC-00	Rheostat Fan Speed Controller for RSD fan	\$91	3 lbs
FSC-100-1	Quiet RSD Fan Control Package - Solid Fuel Only (Includes VMC Motor Drive with Wall Plate Potentiometer)	\$891	3 lbs
FSC-200-1	Better RSD Fan Control Package - Solid Fuel Only (Includes MUC, VMC & CS75)	\$1,200	3 lbs
FSC-250-1	Standard RSD Fan Control Package - Gas Only (Includes MUC, VMC, GFS, Vent Probe & Tubing)	\$1,303	3 lbs
FSC-350-1	Better RSD Fan Control Package for - Gas Only (Includes H100, VMC, LP5 pressure transducer, Vent Probe & Tubing)	\$2,297	3 lbs



Chimney Fan Adapters for Masonry Chimney (Misc Multiplier)			
MFA250	Masonry Fan Adapter for RSD150/250	\$411	N/A
MFA350	Masonry Fan Adapter for RSD350	\$560	N/A



Chimney Fan Vibration Dampner (Misc Multiplier)			
FVD250	Fan Vibration Dampner for RSD150/250	\$651	N/A
FVD350	Fan Vibration Dampner for RSD350	\$800	N/A

Chimney Fan Adapters for Metal Chimney (Misc Multiplier)			
RFA-210	10" Fan adaptor for RSD250	\$606	N/A
RFA-212	12" Fan adaptor for RSD250	\$623	N/A
RFA-214	14" Fan adaptor for RSD250	\$663	N/A
RFA-310	10" Fan adaptor for RSD350	\$640	N/A
RFA-312	12" Fan adaptor for RSD350	\$651	N/A
RFA-314	14" Fan adaptor for RSD350	\$697	N/A
RFA-316	16" Fan adaptor for RSD350	\$709	N/A



Chimney Fan Silencer (Gas Burning Only) (Misc Multiplier)			
AGM1120-250	10" Diameter AGM Passive Silencer (Gas Only)	\$3,473	N/A
AGM1120-300	12" Diameter AGM Passive Silencer (Gas Only)	\$3,649	N/A



Mechanical Fireplace Damper (Used with FSC250.1 or FSC350.1) (Gas Burning Only) (Misc Multiplier)			
GFD-210	10" Gas flue damper+adaptor for 250 + actuator	\$1,931	N/A
GFD-212	12" Gas flue damper+adaptor for 250 + actuator	\$2,091	N/A
GFD-214	14" Gas flue damper+adaptor for 250 + actuator	\$2,263	N/A
GFD-312	12" Gas flue damper+adaptor for 350 + actuator	\$2,137	N/A
GFD-314	14" Gas flue damper+adaptor for 350 + actuator	\$2,309	N/A
GFD-316	16" Gas flue damper+adaptor for 350 + actuator	\$2,583	N/A



Replacement Parts

Individual Parts for MFP63 (Accessory Multiplier)		Retail Price
MFP63-1	HEARTH - LEFT OR RIGHT - 1 PIECE	\$ 583.13
MFP63-1A	HEARTH - CENTER	\$ 488.12
MFP63-2	REAR WALL - (2 PIECES)	\$ 806.99
MFP63-3	SIDE WALL	\$ 207.48
MFP63-3A	SIDE WALL W/4" KNOCKOUT	\$ 240.24
MFP63-4	DOWNDRAFT DIVERTER (2 PIECES)	\$ 782.96
MFP63-5	DOME REAR - LOWER	\$ 418.24
MFP63-6	LINTEL(6A- \$509.59, 6B- \$274.39)	\$ 823.37
MFP63-7	DOME SIDE - LOWER OR UPPER	\$ 158.34
MFP63-8	DOME SIDE - MIDDLE	\$ 232.96
MFP63-9	DOME TOP FOR 16" CLASS A CHIMNEY	\$ 770.95
MFP63-10	DOME - FRONT/REAR MIDDLE	\$ 748.02
MFP63-11	DOME - FRONT/REAR UPPER	\$ 645.37

Individual Parts for MFP49 (Accessory Multiplier)		
MFP49-1	HEARTH - LEFT OR RIGHT - 1 PIECE	\$ 509.96
MFP49-2	REAR WALL	\$ 289.38
MFP49-3	SIDE WALL	\$ 207.48
MFP49-3A	SIDE WALL W/4" COMBUSTION AIR HOLE	\$ 232.60
MFP49-4	DOWNDRAFT DIVERTER	\$ 509.96
MFP49-5	DOME REAR - LOWER	\$ 255.53
MFP49-6	LINTEL(6A-\$365.03 , 6B- \$196.80)	\$ 535.08
MFP49-7	DOME SIDE - LOWER	\$ 158.34
MFP49-8	DOME SIDE - UPPER	\$ 251.16
MFP49-9	DOME TOP FOR 14" CLASS A CHIMNEY	\$ 480.48
MFP49-10	DOME FRONT/REAR - UPPER	\$ 444.44

Individual Parts for MFP44 (Accessory Multiplier)		
MFP44-1	HEARTH - LEFT OR RIGHT - 1 PIECE	\$ 454.27
MFP44-2	REAR WALL	\$ 262.08
MFP44-3	SIDE WALL	\$ 207.48
MFP44-3A	SIDE WALL W/4" COMBUSTION AIR HOLE	\$ 226.04
MFP44-4	DOWNDRAFT DIVERTER	\$ 466.28
MFP44-5	DOME REAR - LOWER	\$ 228.23
MFP44-6	LINTEL (6A- \$300.45, 6B- \$161.78)	\$ 484.85
MFP44-7	DOME SIDE - LOWER	\$ 153.97
MFP44-8	DOME SIDE - UPPER	\$ 236.96
MFP44-9	DOME TOP FOR 12" CLASS A CHIMNEY	\$ 432.43
MFP44-10	DOMR FRONT/REAR - UPPER	\$ 400.76

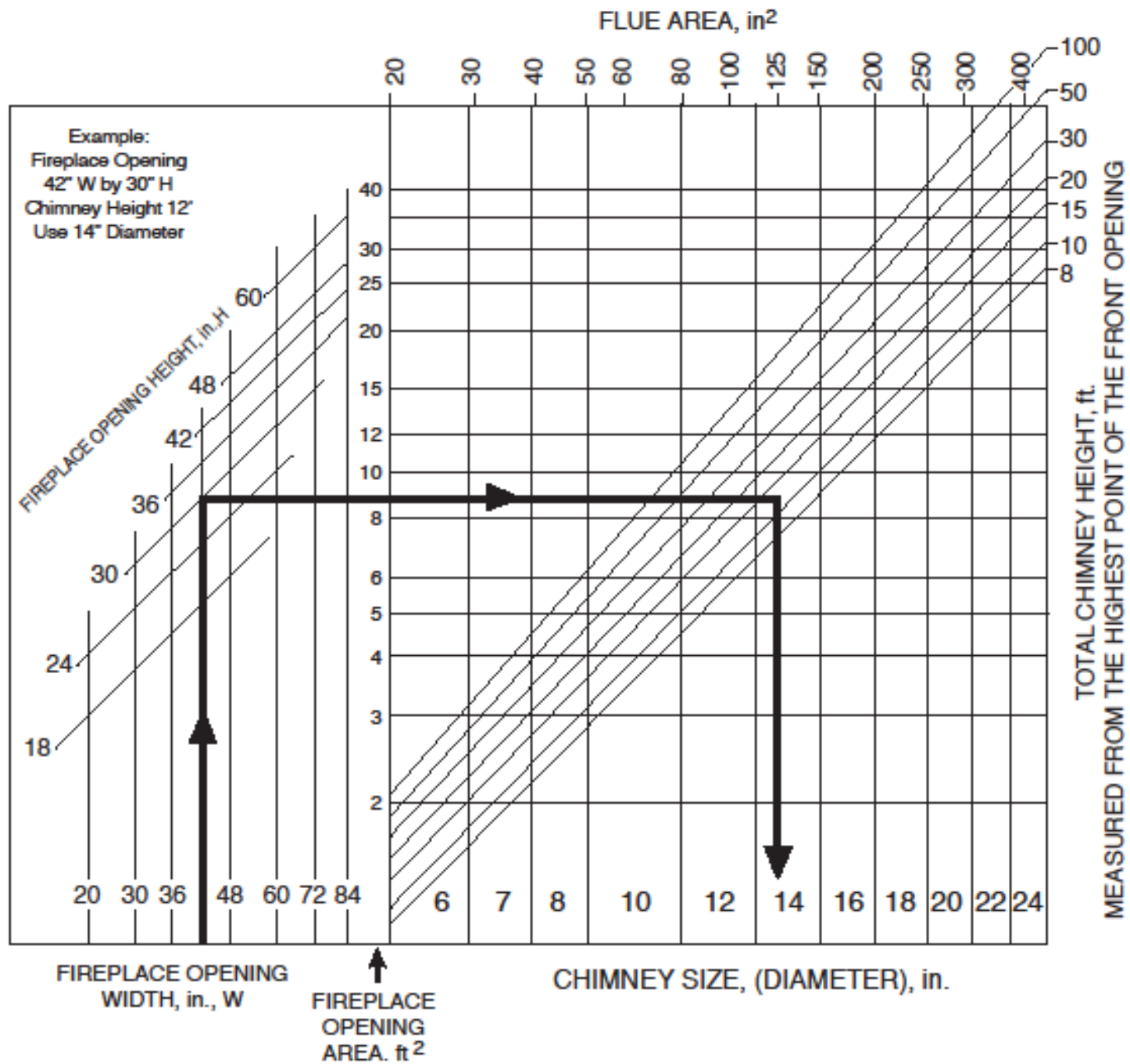
Replacement Parts Cont.

Individual Parts for MFP39 (Accessory Multiplier)		Retail Price
MFP39-1	HEARTH - LEFT OR RIGHT - 1 PIECE	\$ 432.43
MFP39-2	REAR WALL	\$ 236.96
MFP39-3	SIDE WALL	\$ 207.48
MFP39-3A	SIDE WALL W/4" COMBUSTION AIR HOLE	\$ 226.04
MFP39-4	DOWNDRAFT DIVERTER	\$ 432.43
MFP39-5	DOME REAR - LOWER	\$ 207.48
MFP39-6	LINTEL (6A-\$281.00 , 6B- \$151.31)	\$ 454.27
MFP39-7	DOME SIDE - LOWER	\$ 153.97
MFP39-8	DOME SIDE - UPPER	\$ 236.96
MFP39-9	DOME TOP FOR 12" CLASS A CHIMNEY	\$ 400.76
MFP39-10	DOME FRONT/REAR - UPPER	\$ 368.00

Individual Parts for MFPST43 (Accessory Multiplier)		
MFPST43-1	HEARTH - LEFT OR RIGHT - 1 PIECE	\$ 494.68
MFPST43-3	SIDE WALL	\$ 282.83
MFPST43-3A	SIDE WALL W/4" COMBUSTION AIR HOLE	\$ 304.67
MFPST43-6	LINTEL(6A- \$250.24, 6B- \$134.75)	\$ 404.04
MFPST43-7	DOME SIDE - LOWER	\$ 153.97
MFPST43-8	DOME SIDE - UPPER	\$ 236.96
MFPST43-9	DOME TOP FOR 16" CLASS A CHIMNEY	\$ 466.28
MFPST43-10	DOME FRONT/REAR - UPPER	\$ 432.43

Individual Parts for MFP33 (Accessory Multiplier)		
MFP33-1	HEARTH - LEFT OR RIGHT - 1 PIECE	\$ 404.04
MFP33-2	REAR WALL	\$ 215.12
MFP33-3	SIDE WALL	\$ 207.48
MFP33-3A	SIDE WALL W/4" COMBUSTION AIR HOLE	\$ 215.28
MFP33-4	DOWNDRAFT DIVERTER	\$ 190.01
MFP33-5	DOME REAR - LOWER	\$ 188.92
MFP33-6	LINTEL (6A- \$257.67, 6B- \$138.74)	\$ 416.05
MFP33-7	DOME SIDE - LOWER	\$ 153.97
MFP33-8	DOME SIDE - UPPER	\$ 236.96
MFP33-9	DOME TOP FOR 12" CLASS A CHIMNEY	\$ 372.37
MFP33-10	DOME FRONT/REAR - UPPER	\$ 352.72

CHIMNEY SIZING CHART FOR FIREPLACES



MASON-LITE

by MFI • Masonry Fireplace Industries, Inc

Firebrick & Mortar Per Unit

Model (Indoor and Outdoor)	Buckets of Mortar Included (For Firebox)	Buckets of Mortar Not Included (For Firebrick)	Split Brick
MFP 33"	1	1	62
MFP 39"	1	1	85
MFP 43" (See-Through)	1	1	77
MFP 44"	1	1	90
MFP 49"	1	1	100
MFP 63"	2	1	120
LMFP36-NT	1	1	62
LMFP48- NT	1	1	77
LMFP60-NT	1	1	92
LMFP72-NT	2	2	110
LMFP84-NT	2	2	130
LMFP96-NT	2	2	150
LMFP108-NT	2	2	170
LMFP120-NT	2	2	190
MFP72-RGL	2	2	160
MFP84-RGL	2	2	178
MFP96-RGL	2	2	200
MFP108-RGL	2	2	218
MFP120-RGL	3	2	240

Notes:

Add approximately 20% to brick counts of Linear(LMFP) units with troughs.

Brick counts for the MFP33-63 would be the same for B-Vent or Vent Free versions of the units.