



MASON-LITE

by MFI • Masonry Fireplace Industries, Inc.

*Manufacturers of Modular Masonry*

**2026**  
**Pricing**  
**&**  
**Ordering Information**  
Effective 1/1/2026

800-628-5044 / [raymurray.com](http://raymurray.com)  
[mason-lite.com](http://mason-lite.com)

# Table of Contents

## Page

<b><u>Mason-Lite Fireplaces</u></b>	<b>3</b>
Standard Fire Box Kits	3
Virginiana Burners	3
Virginiana Lucent Burners	3
Regal Fire Box Kits	3
<b><u>Mason-Lite Gas Only Standard Fireplaces</u></b>	<b>4</b>
B-Vent Standard Fire Box Kits	4
Vent-Free Standard Fire Box Kits	4
Virginiana Vent Free Burners	4
<b><u>Mason-Lite Custom Fireplaces</u></b>	<b>4</b>
<b><u>Mason-Lite Accessories</u></b>	<b>5</b>
Combustion Air Kits	5
Arches	5
Mortar	5
Height Kit	5
Metal Bases	5
Steel Throat Dampers	6
Cast Iron Dampers	6
Damper Blocks	6
PureBurn (EPA Phase 2)	6
<b><u>Mason-Lite True Fire Brick Panels</u></b>	<b>7-8</b>
<b><u>Mason-Lite Linear Firebox Kits</u></b>	<b>9-10</b>
B-Vent Linear Firebox Kits	9
Linear Vented Burners	10
<b><u>Mason-Lite Linear Vent Free Firebox Kits</u></b>	<b>11</b>
Linear Vent Free Burners	11
<b><u>Mason-Lite Masonry Chimney Systems</u></b>	<b>12</b>
<b><u>Mason-Lite Pizza Ovens</u></b>	<b>12</b>
<b><u>Mason-Lite Fire Features</u></b>	<b>12</b>
<b><u>Architectural Clay by MFI Clay Tops</u></b>	<b>13</b>
<b><u>Mason-Lite Chimney Shrouds</u></b>	<b>14</b>
<b><u>Duravent DuraChimney II (12", 14", 16")</u></b>	<b>15-16</b>
<b><u>Duravent B-Vent Pipe (10" &amp; 12") &amp; Anchor Plate Draft Hoods</u></b>	<b>16</b>
<b><u>Energex Chimney Fans</u></b>	<b>17</b>
<b><u>Replacement Parts</u></b>	<b>18</b>

## Mason-Lite Standard Fire Boxes



Crated  
Package

- Standard kits come complete with mortar, Angle Iron or T-Bar. Linear, Regal and Custom units DO NOT include angle Iron or T-Bar
- Sizes listed are raw box dimensions. Finished dimensions are 3" less when lined with fire brick splits or panels. (Linear and Regal Models reflect actual finished opening)
- Fireboxes must be lined with optional brick panels or local firebrick handlaid.

			RETAIL	Crated
Mason-Lite Wood Burning or Gas Firebox Kits (High Temp. Mortar Included) (Unit Multiplier)			Price/Ea	Weight (Lbs.)
MFP75	75"	SEMI-CUSTOM FIREBOX KIT, Use Dual 14" Class A UL103 Chimney	\$11,698	2825
MFP63	63"	FIREBOX KIT - Use 16" Class A UL103 Chimney	\$8,031	2652
MFP49	49"	FIREBOX KIT - Use 14" Class A UL103 Chimney	\$5,450	1958
MFP44	44"	FIREBOX KIT - Use 12" Class A UL103 Chimney	\$5,057	1757
MFP39	39"	FIREBOX KIT - Use 12" Class A UL103 Chimney	\$4,668	1614
MFPST43	43"	ST FIREBOX KIT - Use 16" Class A UL103 Chimney	\$6,061	1631
MFP33	33"	FIREBOX KIT - Use 12" Class A UL103 Chimney	\$3,447	1337



### Optional Virginia Decorative Gas Logs (Unit Multiplier)

Electronic Ignition with remote Inc. , match light avail. upon request

VG18-NG	18"	Virginia Decorative Gas Logs and NG Burner for use with MFP39	\$2,006	80
VG18-LP	18"	Virginia Decorative Gas Logs and LP Burner for use with MFP39	\$2,099	80
VG24-NG	24"	Virginia Decorative Gas Logs and NG Burner for use with MFP39	\$2,334	100
VG24-LP	24"	Virginia Decorative Gas Logs and LP Burner for use with MFP39	\$2,425	100
VG30-NG	30"	Virginia Decorative Gas Logs and NG Burner for use with MFP44	\$2,635	141
VG30-LP	30"	Virginia Decorative Gas Logs and LP Burner for use with MFP44	\$2,727	141
VG36-NG	36"	Virginia Decorative Gas Logs and NG Burner for use with MFP49	\$3,071	173
VG36-LP	36"	Virginia Decorative Gas Logs and LP Burner for use with MFP49	\$3,162	173
VGST30-NG	30"	See Thru Virginia Dec. Gas Logs and NG Burner for use with MFPST43	\$3,396	236
VGST30-LP	30"	See Thru Virginia Dec. Gas Logs and LP Burner for use with MFPST44	\$3,488	236
VGXL48-NG	48"	JUMBO Virginia Dec. Gas Logs and NG Burner for use with MFP63	\$7,570	410
VGXL48-LP	48"	JUMBO Virginia Dec. Gas Logs and LP Burner for use with MFP63	\$7,685	410



### Optional Virginia Lucent Decorative Gas Logs (Unit Multiplier)

Electronic Ignition with remote Inc.

VGLC18-VEN	18"	Virginia Lucent Decorative Gas Logs and NG Burner for use with MFP39	\$3,029	67
VGLC18-VEP	18"	Virginia Lucent Decorative Gas Logs and LP Burner for use with MFP39	\$3,164	67
VGLC24-VEN	24"	Virginia Lucent Decorative Gas Logs and NG Burner for use with MFP39	\$3,238	80
VGLC24-VEP	24"	Virginia Lucent Decorative Gas Logs and LP Burner for use with MFP39	\$3,372	80
VGLC30-VEN	30"	Virginia Lucent Decorative Gas Logs and NG Burner for use with MFP44	\$3,701	93
VGLC30-VEP	30"	Virginia Lucent Decorative Gas Logs and LP Burner for use with MFP44	\$3,835	93
VGLC36-VEN	36"	Virginia Lucent Decorative Gas Logs and NG Burner for use with MFP49	\$4,182	112
VGLC36-VEP	36"	Virginia Lucent Decorative Gas Logs and LP Burner for use with MFP49	\$4,315	112



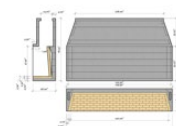
## Mason-Lite Regal Wood Burning Boxes

Must use full firebrick sourced locally, Please note instruction manual for clearance differences

T-Bar/ Angle Iron Not Included

### Mason-Lite Regal Wood Burning Boxes (Unit Multiplier)

MFP72-RGL	72" x 38.5"	FIREBOX KIT - Use Dual 14" Class A UL103 Chimney	\$11,433	3385
MFP84-RGL	84" x 38.5"	FIREBOX KIT - Use Dual 16" Class A UL103 Chimney	\$13,340	3794
MFP96-RGL	96" x 38.5"	FIREBOX KIT - Use Dual 16" Class A UL103 Chimney	\$15,246	4185
MFP108-RGL	108" x 38.5"	FIREBOX KIT - Use Triple 14" Class A UL103 Chimney	\$17,151	4475
MFP120-RGL	120" x 38.5"	FIREBOX KIT - Use Triple 14" Class A UL103 Chimney	\$19,057	4900



## Mason-Lite Standard B-Vent Fire Boxes Gas Burning Only

T-Bar Included

Burner, Logset and Spill Switch included. Comes Standard as NG, LP avail. upon request

### Gas B-Vent Firebox Kits (Unit Multiplier)

		<b>RETAIL</b> <b>Price/Ea</b>	<u>Crated</u> <u>Weight (Lbs.)</u>
MGFPST43	12" B-VENT GAS APPLIANCE w/ 30" NG Virginia Gas Logs	<b>\$12,361</b>	1881
MGFP49	10" B-VENT GAS APPLIANCE w/ 36" NG Virginia <b>Lucent</b> Gas Logs	<b>\$11,257</b>	2158
MGFP44	10" B-VENT GAS APPLIANCE w/ 30" NG Virginia <b>Lucent</b> Gas Logs	<b>\$10,269</b>	1932
MGFP39	10" B-VENT GAS APPLIANCE w/ 24" NG Virginia <b>Lucent</b> Gas Logs	<b>\$9,367</b>	1764



## Mason-Lite Standard Vent Free Fire Boxes Gas Burning Only

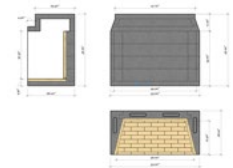
T-Bar Included

### Vent Free Firebox Kits (Unit Multiplier)

MFP49VF	49" VENT FREE FIREBOX KIT - use any approved VF log set	<b>\$4,463</b>	1608
MFP44VF	44" VENT FREE FIREBOX KIT - use any approved VF log set	<b>\$4,013</b>	1457
MFP39VF	39" VENT FREE FIREBOX KIT - use any approved VF log set	<b>\$3,533</b>	1349
MFPST43VF	43" VENT FREE ST FIREBOX KIT - use any approved VF log set	<b>\$4,386</b>	1314

### Optional Virginia Vent Free Gas Logs (Inc. Elect. Ignition w. Remote) (Unit Multiplier)

VGVF24-NG	Virginia Vent Free Gas Logs and NG Burner for use with MFP39VF	<b>\$2,181</b>	73
VGVF24-LP	Virginia Vent Free Gas Logs and LP Burner for use with MFP39VF	<b>\$2,181</b>	73
VGVF30-NG	Virginia Vent Free Gas Logs and NG Burner for use with MFP44VF	<b>\$2,268</b>	81
VGVF30-LP	Virginia Vent Free Gas Logs and LP Burner for use with MFP44VF	<b>\$2,268</b>	81



## Custom Mason-Lite Fireplaces Available



Design services available for custom fireplaces including linear, Rumford Style\*, See Thru, 3-sided, island and corner configuration. These custom units are ready to assemble and require little to no further modification on site. Please visit [Mason-Lite.com/customorder](http://Mason-Lite.com/customorder)

## Mason-Lite Accessories

RETAIL

### Combustion Air Kits (Accessory Multiplier)

Price/Ea

Weight

- Includes a closable fire box inlet (that fits pre-cut hole in firebox), 3' flexible vent conduit and plastic outdoor hood

- If using panels, a hole must be cut to accommodate the air kit. See complete instructions for further information.

-Square Sided (Linear or Custom) units require a "See Thru" Air Kit.

MFP4-AK-M	4" Combustion Air Kit -3' Flexible Vent and Metal Hood	\$366	7 lbs
MFPST-AK-M	4" Combustion Air Kit for MFPST43 AND Linear Units	\$366	7 lbs



### Masonry Arches (Accessory Multiplier)

- This option must be cut to size and fitted in per installation instructions.

MFP-ARC	Masonry Arch - Fits up to and including MFP49	\$416	42 lbs
MFP-ARC63	Masonry Arch - Fits MFP63 - NON-STOCK ITEM	\$652	60 lbs



### Refractory Mortar (Accessory Multiplier)

MFP530	50 LBS. BUCKET DRY MORTAR	\$236	50 lbs
--------	---------------------------	-------	--------

### Height Kits (Used to increase opening height by 8") (Flue size may need to be increased) (Accessory Multiplier)

- Includes firebox sections to increase face height by 8"

- Be sure to check flue sizing (diameter) based on the installation parameters (i.e.. chimney height and new face dimensions) to ensure proper draw.

MFP75-HK	Height Kit Includes (1) MFP75-2, (1) MFP75-2A & (2) MFP75-3	\$1,421	279 lbs
MFP63-HK	Height Kit Includes (1) MFP63-2, (1) MFP63-2A & (2) MFP63-3	\$1,198	255 lbs
MFP49-HK	Height Kit Includes (1) MFP49-2 & (2) MFP49-3	\$710	239 lbs
MFP44-HK	Height Kit Includes (1) MFP44-2 & (2) MFP44-3	\$693	228 lbs
MFP39-HK	Height Kit Includes (1) MFP39-2 & (2) MFP39-3	\$664	219 lbs
MFPST43-HK	Height Kit Includes (2) MFP43ST-3	\$577	162 lbs
MFP33-HK	Height Kit Includes (1) MFP33-2 & (2) MFP33-3	\$629	215 lbs



### Metal Bases (For use with Wood Burning Fireplaces Being Installed on a Wood Floor) (Accessory Multiplier)

- For installations on combustible floors.

- Includes Insulation Blanket, All Thread, Brackets and (2) Cement Board Per Base

- Additional mounting hardware may be required depending upon the installation. (See Instructions)

Weight

MFPB63	8" Structural Metal Base for 63" Firebox	\$2,440	219 lbs
MFPB49	6" Structural Metal Base for 49" Firebox	\$1,949	140 lbs
MFPB44	6" Structural Metal Base for 44" Firebox	\$1,650	128 lbs
MFPB43	8" Structural Metal Base for 43" See-Thru Firebox	\$1,828	115 lbs
MFPB39	6" Structural Metal Base for 39" Firebox	\$1,503	103 lbs
MFPB33	6" Structural Metal Base for 33" Firebox	\$1,323	85 lbs



## Mason-Lite Accessories cont.

RETAIL

Price/Ea

Weight

### Steel Throat Dampers (Designed For Mason-Lite Fireplaces) (Damper Blocks Not Necessary) (Accessory Multiplier)

MFP-SD63	63" Steel Throat Damper - for MFP63 (DAMPER BLOCK - NOT NECESSARY)	<b>\$2,307</b>	109 lbs
MFP-SD49	49" Steel Throat Damper - for MFP49 (DAMPER BLOCK - NOT NECESSARY)	<b>\$1,089</b>	89 lbs
MFP-SD44	44" Steel Throat Damper - for MFP44 (DAMPER BLOCK - NOT NECESSARY)	<b>\$968</b>	82 lbs
MFP-SD39	39" Steel Throat Damper - for MFP39 (DAMPER BLOCK - NOT NECESSARY)	<b>\$863</b>	75 lbs
MFP-SD33	33" Steel Throat Damper - for MFP33 (DAMPER BLOCK - NOT NECESSARY)	<b>\$759</b>	60 lbs



### Cast Iron Dampers (Accessory Multiplier) (Based on Availability)

MFP-CC54	54" Cast Damper - for MFP63 (DAMPER BLOCK - MFP63 Included)	<b>\$1,468</b>	109 lbs
MFP-CC42	42" Cast Damper - for MFP49 (DAMPER BLOCK - MFP49 Included)	<b>\$627</b>	89 lbs
MFP-CC36	36" Cast Damper - for MFP44 (DAMPER BLOCK - MFP44 Included)	<b>\$549</b>	82 lbs
MFP-CC30	30" Cast Damper - for MFP39 (DAMPER BLOCK - MFP39 Included)	<b>\$487</b>	75 lbs
MFP-CC24	24" Cast Damper - for MFP33 (DAMPER BLOCK - MFP33 Included)	<b>\$375</b>	60 lbs



### Damper Blocks (If using Mason-Lite Firebrick Panels, Damper Blocks are not needed) (Accessory Multiplier)

MFPDS63	Damper Block for MFP63	<b>\$193</b>	57 lbs
MFPDS49	Damper Block for MFP49	<b>\$165</b>	44 lbs
MFPDS44	Damper Block for MFP44	<b>\$148</b>	40 lbs
MFPDS39	Damper Block for MFP39	<b>\$128</b>	36 lbs
MFPDS33	Damper Block for MFP33	<b>\$109</b>	31 lbs

### PureBurn EPA Phase II Qualified Burner (Accessory Multiplier)

QWBN-44	PUREBURN GRATE/BURNER SET (Natural Gas) (for MFP44 and MFP49 )	<b>\$2,703</b>	18 lbs
QWBP-44	PUREBURN GRATE/BURNER SET (Propane) (for MFP44 and MFP49 )	<b>\$2,703</b>	18 lbs
QWBN-33	PUREBURN GRATE/BURNER SET (Natural Gas) (for MFP33 and MFP39 )	<b>\$2,026</b>	14 lbs
QWBP-33	PUREBURN GRATE/BURNER SET (Propane) (for MFP33 and MFP39 )	<b>\$2,026</b>	14 lbs
QWBN-63	PUREBURN GRATE/BURNER SET (Natural Gas) (for MFP63 )	<b>\$3,869</b>	26 lbs
QWBP-63	PUREBURN GRATE/BURNER SET (Propane) (for MFP63 )	<b>\$3,869</b>	26 lbs
QWB-EI	ELECTRONIC IGNITION FOR USE WITH PUREBURN UNITS	<b>\$585</b>	3 lbs



## Mason-Lite Real Brick Panels & Fire Brick

- Made with real Fire Brick and are available for fire boxes ordered with the optional height kit. Add 20 % to price. Designate extended height panels by adding -X to the part number (ex. MFP39SHBL-X). Extended panels only available for use with one height extension.

- Panels available in Cream, Black and Gold. Designate Cream brick by adding -C to the part number (ex. MFP39SHBL-C). Designate Black brick by adding -B to the part number (ex. MFP39SHBL-B ). Designate Gold brick by adding -G to the part number. **We are stocking select panels in cream and black.**

Brick Panels not available for Linear or Regal models. (Color may vary between sets) (Not available for MFP75)

		RETAIL	
		Price/Ea	Weight
<b>Split Herringbone Brick Panels (Brick Size Appox. 2.25" x 9") (Accessory Multiplier)</b>			
<b>Must add a -C for cream, -B for black or -G for gold to the part number.</b>			
MFP63SHBL	Herringbone Brick Panels for 63" FP	<b>\$4,425</b>	563 lbs
MFP49SHBL	Herringbone Brick Panels for 49" FP	<b>\$3,007</b>	474 lbs
MFP44SHBL	Herringbone Brick Panels for 44" FP	<b>\$2,867</b>	418 lbs
MFP39SHBL	Herringbone Brick Panels for 39" FP	<b>\$2,703</b>	395 lbs
MFP33SHBL	Herringbone Brick Panels for 33" FP	<b>\$2,419</b>	334 lbs
MFPST43SHBL	Herringbone Brick Panel for 43" See-Thru FP	<b>\$3,007</b>	412 lbs



Split Herringbone  
(shown in cream)

<b>Split Running Bond Brick Panels (Brick Size Appox. 2.25" x 9") (Accessory Multiplier)</b>			
<b>Must add a -C for cream, -B for black or -G for gold to the part number.</b>			
MFP63SRBL	Split Running Bond Brick Panels for 63" FP (-C cream, -B black, -G gold)	<b>\$4,425</b>	563 lbs
MFP49SRBL	Split Running Bond Brick Panels for 49" FP (-C cream, -B black, -G gold)	<b>\$3,007</b>	474 lbs
MFP44SRBL	Split Running Bond Brick Panels for 44" FP (-C cream, -B black, -G gold)	<b>\$2,867</b>	418 lbs
MFP39SRBL	Split Running Bond Brick Panels for 39" FP (-C cream, -B black, -G gold)	<b>\$2,703</b>	395 lbs
MFP33SRBL	Split Running Bond Brick Panels for 33" FP (-C cream, -B black, -G gold)	<b>\$2,419</b>	334 lbs
MFPST43SRBL	Split Running Bond Brick Panel for 43" See-Thru FP (-C cream, -B black, -G gold)	<b>\$3,007</b>	412 lbs



Split Running Bond  
(shown in Black)

<b>Full Running Bond Brick Panels (Brick Size Appox. 4.5" x 9") (Accessory Multiplier)</b>			
<b>Must add a -C for cream, -B for black or -G for gold to the part number.</b>			
MFP63FRBL	Full Running Bond Brick Panels for 63" FP (-C cream, -B black, -G gold)	<b>\$4,153</b>	602 lbs
MFP49FRBL	Full Running Bond Brick Panels for 49" FP (-C cream, -B black, -G gold)	<b>\$2,703</b>	498 lbs
MFP44FRBL	Full Running Bond Brick Panels for 44" FP (-C cream, -B black, -G gold)	<b>\$2,596</b>	448 lbs
MFP39FRBL	Full Running Bond Brick Panels for 39" FP (-C cream, -B black, -G gold)	<b>\$2,458</b>	430 lbs
MFP33FRBL	Full Running Bond Brick Panels for 33" FP (-C cream, -B black, -G gold)	<b>\$2,207</b>	364 lbs
MFPST43FRBL	Full Running Bond Brick Panel for 43" See-Thru FP (-C cream, -B black, -G gold)	<b>\$2,703</b>	414 lbs



Full Running Bond  
(shown in cream)

## Mason-Lite Real Brick Panels & Fire Brick cont.

### EXTENDED Split Herringbone Brick Panels (Brick Size Approx. 2.25" x 9") (Accessory Multiplier)

Must add a -C for cream, -B for black or -G for gold to the part number.

MFP63SHBL-X	8" Extended Herringbone Brick Panels for 63" Fireplace w. Height Kit	<b>\$5,310</b>	676 lbs
MFP49SHBL-X	8" Extended Herringbone Brick Panels for 49" Fireplace w. Height Kit	<b>\$3,609</b>	569 lbs
MFP44SHBL-X	8" Extended Herringbone Brick Panels for 44" Fireplace w. Height Kit	<b>\$3,441</b>	502 lbs
MFP39SHBL-X	8" Extended Herringbone Brick Panels for 39" Fireplace w. Height Kit	<b>\$3,244</b>	474 lbs
MFP33SHBL-X	8" Extended Herringbone Brick Panels for 33" Fireplace w. Height Kit	<b>\$2,903</b>	401 lbs
MFPST43SHBL-X	8" Extended Herringbone Brick Panels for 43" See Thru Fireplace w. HK	<b>\$3,609</b>	494 lbs



Split Herringbone  
(shown in cream)

### EXTENDED Split Running Bond Brick Panels (Brick Size Approx. 2.25" x 9") (Accessory Multiplier)

Must add a -C for cream, -B for black or -G for gold to the part number.

MFP63SRBL-X	8" Extended Split Running Bond Brick Panels for 63" FP w. Height Kit	<b>\$5,310</b>	676 lbs
MFP49SRBL-X	8" Extended Split Running Bond Brick Panels for 49" FP w. Height Kit	<b>\$3,609</b>	569 lbs
MFP44SRBL-X	8" Extended Split Running Bond Brick Panels for 44" FP w. Height Kit	<b>\$3,441</b>	502 lbs
MFP39SRBL-X	8" Extended Split Running Bond Brick Panels for 39" FP w. Height Kit	<b>\$3,244</b>	474 lbs
MFP33SRBL-X	8" Extended Split Running Bond Brick Panels for 33" FP w. Height Kit	<b>\$2,903</b>	401 lbs
MFPST43SRBL-X	8" Extended Split Running Bond Brick Panel for 43" See-Thru FP w. HK	<b>\$3,609</b>	494 lbs



Split Running Bond  
(shown in Black)

### EXTENDED Full Running Bond Brick Panels (Brick Size Approx. 4.5" x 9") (Accessory Multiplier)

Must add a -C for cream, -B for black or -G for gold to the part number.

MFP63FRBL-X	8" Extended Full Running Bond Brick Panels for 63" FP w. Height Kit	<b>\$4,984</b>	722 lbs
MFP49FRBL-X	8" Extended Full Running Bond Brick Panels for 49" FP w. Height Kit	<b>\$3,244</b>	598 lbs
MFP44FRBL-X	8" Extended Full Running Bond Brick Panels for 44" FP w. Height Kit	<b>\$3,115</b>	538 lbs
MFP39FRBL-X	8" Extended Full Running Bond Brick Panels for 39" FP w. Height Kit	<b>\$2,949</b>	516 lbs
MFP33FRBL-X	8" Extended Full Running Bond Brick Panels for 33" FP w. Height Kit	<b>\$2,649</b>	436 lbs
MFPST43FRBL-X	8" Extended Full Running Bond Brick Panel for 43" See-Thru FP w. HK	<b>\$3,244</b>	496 lbs



Full Running Bond  
(shown in cream)

## Mason-Lite Firebrick by the Pallet

### Firebrick by the Pallet (Color may vary between pallets) (Accessory Multiplier)

NOTE: Split size is not the same size as the brick in "split" brick panels above

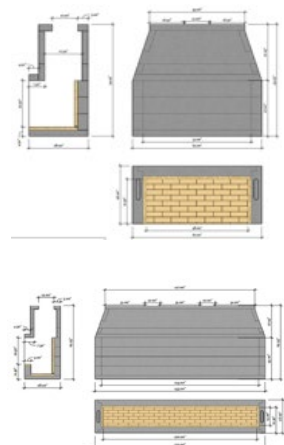
MFP-FBPT-G	Pallet of 332 Gold Full Sized Firebrick (Approx. 4.5" x 9" x 2.5" Brick Size)	<b>\$5,034</b>	2536 lbs
MFP-SBPT-G	Pallet of 664 Gold Split Sized Firebrick (Approx. 4.5" x 9" x 1.25" Brick Size)	<b>\$6,945</b>	2536 lbs
MFP-FBPT-B	Pallet of 336 Black Full Sized Firebrick (Approx. 4.5" x 9" x 2.5" Brick Size)	<b>\$5,034</b>	2620 lbs
MFP-SBPT-B	Pallet of 648 Black Split Sized Firebrick (Approx. 4.5" x 9" x 1.25" Brick Size)	<b>\$6,945</b>	2620 lbs
MFP-FBPT-C	Pallet of 304 Cream Full Sized Firebrick (Approx. 4.5" x 9" x 2.5" Brick Size)	<b>\$5,034</b>	2679 lbs
MFP-SBPT-C	Pallet of 1008 Cream Split Sized Firebrick (Approx. 4.5" x 9" x 1.25" Brick Size)	<b>\$10,541</b>	4117 lbs



## Mason-Lite Linear Fireboxes & Burners

"Trough" models conceal either our Opalescence Linear burner with LED light combo or Golden Blount's Alpine burner. For applications that require more burner flexibility, we offer the "No Trough" models. These models will accept traditional "H" Burners and Logsets.

		RETAIL	Weight
		Price/Ea	Approx.
<b>Linear B-Vent Firebox Kits (Use MFPST-AK if Outside Airtkit is needed) (Unit Multiplier)</b>			
LMFP36-NT	36" LINEAR GAS FIREPLACE (NO TROUGH) - 12" B-VENT	<b>\$6,744</b>	1758
LMFP48-NT	48" LINEAR GAS FIREPLACE (NO TROUGH) - 12" B-VENT	<b>\$8,345</b>	2056
LMFP60-NT	60" LINEAR GAS FIREPLACE (NO TROUGH) - 12" B-VENT	<b>\$9,393</b>	2293
LMFP72-NT	72" LINEAR GAS FIREPLACE (NO TROUGH) - 12" B-VENT	<b>\$13,662</b>	2633
LMFP84-NT	84" LINEAR GAS FIREPLACE (NO TROUGH) - 12" B-VENT	<b>\$15,521</b>	3030
LMFP96-NT	96" LINEAR GAS FIREPLACE (NO TROUGH) - Dual 12" B-VENT	<b>\$17,332</b>	3204
LMFP108-NT	108" LINEAR GAS FIREPLACE (NO TROUGH) - Dual 12" B-VENT	<b>\$18,939</b>	3440
LMFP120-NT	120" LINEAR GAS FIREPLACE (NO TROUGH) - Dual 12" B-VENT	<b>\$20,372</b>	3805
LMFP36	36" LINEAR GAS FIREPLACE - 12" B-VENT (with Burner Trough)	<b>\$7,462</b>	2134
LMFP48	48" LINEAR GAS FIREPLACE - 12" B-VENT (with Burner Trough)	<b>\$9,233</b>	2324
LMFP60	60" LINEAR GAS FIREPLACE - 12" B-VENT (with Burner Trough)	<b>\$10,399</b>	2757
LMFP72	72" LINEAR GAS FIREPLACE - 12" B-VENT (with Burner Trough)	<b>\$15,142</b>	3109
LMFP84	84" LINEAR GAS FIREPLACE - 12" B-VENT (with Burner Trough)	<b>\$17,205</b>	3344
LMFP96	96" LINEAR GAS FIREPLACE - Dual 12" B-VENT (with Burner Trough)	<b>\$19,211</b>	3699
LMFP108	108" LINEAR GAS FIREPLACE - Dual 12" B-VENT (with Burner Trough)	<b>\$20,995</b>	4118
LMFP120	120" LINEAR GAS FIREPLACE - Dual 12" B-VENT (with Burner Trough)	<b>\$22,588</b>	4565



## Mason-Lite Linear Fireboxes & Burners cont.

### Opalescence Linear Burners (For use with Linear Units with Burner Trough) (Accessory Multiplier)

LMBXXL-EN Includes Case, Burner, S.I.T. Cont. w/Remote, LEDs w/Remote,

(Comes standard as Natural Gas please add EP for Propane or LP and add \$130)

		RETAIL Price/Ea	Weight Approx.
LMB36L-EN	36" Linear Drop-In Burner with LED Lights, For use with LMFP36	\$3,282	36
LMB48L-EN	48" Linear Drop-In Burner with LED Lights, For use with LMFP48	\$3,513	50
LMB60L-EN	60" Linear Drop-In Burner with LED Lights, For use with LMFP60	\$3,770	61
LMB72L-EN	72" Linear Drop-In Burner with LED Lights, For use with LMFP72	\$3,990	71
LMB84L-EN	84" Linear Drop-In Burner with LED Lights, For use with LMFP84	\$4,196	83
LMB96L-EN	96" Linear Drop-In Burner with LED Lights, For use with LMFP96	\$4,427	92
OPS48-LOGS	48" Driftwood Linear 9 PCS- LOGS ONLY	\$524	45
OPS60-LOGS	60" Driftwood Linear 11 PCS- LOGS ONLY	\$773	73
OPS72-LOGS	72" Driftwood Linear 13 PCS- LOGS ONLY	\$855	81
OPS84-LOGS	84" Driftwood Linear 16 PCS- LOGS ONLY	\$1,054	101
OPS96-LOGS	96" Driftwood Linear 18 PCS- LOGS ONLY	\$1,245	125
OPS-GLS-CL	1/2" Clear Reflective Fireglass 10 Lbs.	\$60	5



### Opalescence Lumiere Logset Burners (For use with Linear Units with Burner Trough) (Accessory Multiplier)

LMBXXL-EN Includes Case, Burner, S.I.T. Controls w/Remote, LED Lights w/Remote

(Comes standard as Natural Gas please add EP for Propane or LP and add \$300)

LMB48L-LUM-EN	48" Lumiere Logset Drop-In Burner with LED Lights, For use with LMFP48	\$3,507	65
LMB60L-LUM-EN	60" Lumiere Logset Drop-In Burner with LED Lights, For use with LMFP60	\$4,159	81
LMB72L-LUM-EN	72" Lumiere Logset Drop-In Burner with LED Lights, For use with LMFP72	\$4,610	93



### Alpine Linear Burners. For use with LMFP units w/ Burner Trough (Unit Multiplier), Includes Skytech Hi/Lo Remote

ALB30N-STP	30" Alpine Natural Gas Linear Burner (Spark-to-Pilot) (For LMFP36)	\$2,594	N/A
ALB30L-STP	30" Alpine Propane Linear Burner (Spark-to-Pilot) (For LMFP36)	\$2,594	N/A
ALB42N-STP	42" Alpine Natural Gas Linear Burner (Spark-to-Pilot) (For LMFP48)	\$3,236	N/A
ALB42L-STP	42" Alpine Propane Linear Burner (Spark-to-Pilot) (For LMFP48)	\$3,236	N/A
ALB48N-STP	48" Alpine Natural Gas Linear Burner (Spark-to-Pilot) (For LMFP60)	\$3,359	N/A
ALB48L-STP	48" Alpine Propane Linear Burner (Spark-to-Pilot) (For LMFP60)	\$3,359	N/A
ALB60N-STP	60" Alpine Natural Gas Linear Burner (Spark-to-Pilot) (For LMFP72)	\$3,506	N/A
ALB60L-STP	60" Alpine Propane Linear Burner (Spark-to-Pilot) (For LMFP72)	\$3,506	N/A
ALB72N-STP	72" Alpine Natural Gas Linear Burner (Spark-to-Pilot) (For LMFP84)	\$4,962	N/A
ALB72L-STP	72" Alpine Propane Linear Burner (Spark-to-Pilot) (For LMFP84)	\$4,962	N/A
ALB84N-STP	84" Alpine Natural Gas Linear Burner (Spark-to-Pilot) (For LMFP96)	\$6,147	N/A
ALB84L-STP	84" Alpine Propane Linear Burner (Spark-to-Pilot) (For LMFP96)	\$6,147	N/A
ALB96N-STP	96" Alpine Natural Gas Linear Burner (Spark-to-Pilot) (For LMFP108)	\$6,392	N/A
ALB96L-STP	96" Alpine Propane Linear Burner (Spark-to-Pilot) (For LMFP108)	\$6,392	N/A
ALB108N-STP	108" Alpine Natural Gas Linear Burner (Spark-to-Pilot) (For LMFP120)	\$6,393	N/A
ALB108L-STP	108" Alpine Propane Linear Burner (Spark-to-Pilot) (For LMFP120)	\$6,393	N/A



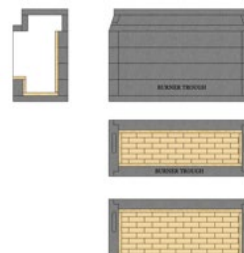
## Mason-Lite Linear VENT FREE Fireboxes & Burners

Mason Lite is here to meet your Linear Vent Free burner needs. We have designed our models to with a trough conceal our Opalescence Linear Vent Free burner with LED light combo.

### Linear Vent Free Firebox Kits (Unit Multiplier)

(Use MFPST-AK if Outside Airkits is needed) (-NT Versions available upon request)

		<b>RETAIL</b> <u>Price/Ea</u>	<u>Crated</u> <u>Weight</u>
LMFP24-VF	24" LINEAR VENT FREE GAS FIREPLACE (with Burner Trough)	<b>\$4,063</b>	1547
LMFP36-VF	36" LINEAR VENT FREE GAS FIREPLACE (with Burner Trough)	<b>\$5,302</b>	1895
LMFP48-VF	48" LINEAR VENT FREE GAS FIREPLACE (with Burner Trough)	<b>\$6,570</b>	2056
LMFP60-VF	60" LINEAR VENT FREE GAS FIREPLACE (with Burner Trough)	<b>\$7,435</b>	2464



### Opalescence Linear Vent Free Burners (Unit Multiplier)

(For use with Linear VF Units with Burner Trough) VFLDBXXL Includes Case, Burner, S.I.T. Contr. w/Remote, LED Lights w/Remote, Rating Plate, Inst. Man., Flex line and fittings

(Comes standard as Natural Gas please replace "EN" with "EP" for Propane LP)

VFLDB24L-EN	24" Linear Drop-In Burner with LED Lights, For use with LMFP24-VF	<b>\$3,088</b>	N/A
VFLDB36L-EN	36" Linear Drop-In Burner with LED Lights, For use with LMFP36-VF	<b>\$3,282</b>	N/A
VFLDB48L-EN	48" Linear Drop-In Burner with LED Lights, For use with LMFP48-VF	<b>\$3,513</b>	N/A
VFLDB60L-EN	60" Linear Drop-In Burner with LED Lights, For use with LMFP60-VF	<b>\$3,770</b>	N/A
OPS-GLS-CL	1/2" Clear Reflective Fireglass 10 Lbs.	<b>\$60</b>	5



## Chimney Systems/Components for *Mason-Lite*

- Mason-Lite refractory chimney system may be used on MFP33, MFP39, MFP44 and MFP49 with a max. syst. hgt. of 30' without add. supp.

- The MFPST43, MFP63 or and MFP75 would need to be ordered specially to use dual 14" Mas. Chim. and would have a max. syst. hgt. of 20'

### Mason-Lite Masonry Chimney System Kits (Unit Multiplier)

RETAIL

Weight

- MCLS-814K 8' System includes MCL-414 (1 ea.), MCL-814 (12 ea.), MCS-814 (12 ea.) & 50 lb. refractory mortar.

- MCLS-814P 4' System includes MCL-414 (1 ea.), MCL-814 (6 ea.), MCS-814 (6 ea.) & 50 lb. refractory mortar.

MCLS-814-16K	Mason-Lite 16' System	<b>\$3,035</b>	2410 lbs
MCLS-814K	Mason-Lite 8' System	<b>\$1,676</b>	1225 lbs
MCLS-814P	Mason-Lite 4' Patio System	<b>\$1,123</b>	731 lbs

### Mason-Lite Masonry Chimney Individual Components (Accessory Multiplier)

MCL-814	Inner Liner (Individual) 14" ID x 8" H	<b>\$67</b>	32 lbs
MCS-814	Outer Liner (Individual) 8" H	<b>\$81</b>	61 lbs
MCL-414	Inner Liner Starter (Individual) 14" ID x 4" H	<b>\$48</b>	14 lbs
MCSBL-814	Brick Ledge 4" H - NON-STOCK	<b>\$349</b>	72 lbs
MCSOS-814	Offset Elbow (30 Degrees) 14" ID x 4" H	<b>\$224</b>	90 lbs
MCL-CAP	Mason-Lite Chimney Cap	<b>\$279</b>	12 lbs
MCL-CAP-SS	Mason-Lite Chimney Cap Stainless Steel	<b>\$388</b>	8 lbs
MCL-CAP-C	Mason-Lite Chimney Cap Copper	<b>\$1,200</b>	8 lbs
MCS-CWN	Mason-Lite Chimney Crown	<b>\$546</b>	95 lbs
MC14-AP	14" ANCHOR PLATE/DAMPER - USE WITH MAS. CHIM. ONLY	<b>\$387</b>	15 lbs



## *Mason-Lite* Pizza Ovens

### Mason-Lite Masonry Pizza Oven (Unit Multiplier)

RETAIL

Weight

MPO-18	18" Toscana Pizza Oven - Inc. 16" Tall Mas. Chim., Firebrick Panels	<b>\$2,249</b>	625 lbs
MPO-18WS	Toscana Pizza Oven Wood Storage	<b>\$1,766</b>	588 lbs
MPO-18D	Toscana Pizza Oven Door	<b>\$991</b>	18 lbs
MPO-24	24" Toscana Golia Pizza Oven - Inc. 16" Tall Mas. Chim., Firebrick Panels	<b>\$5,022</b>	1699 lbs
MPO-24WS	Toscana Golia Oven Wood Storage	<b>\$3,224</b>	1161 lbs
MPO-24D	Toscana Golia Pizza Oven Door	<b>\$1,578</b>	35 lbs



## *Mason-Lite* Fire Features

### Mason-Lite Square Fire Features (Unit Multiplier)

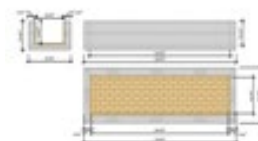
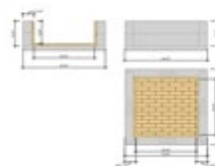
RETAIL

Weight

FS-34	34" Square Fire Feature	<b>\$1,054</b>	TBD
FS-39	39" Square Fire Feature	<b>\$1,058</b>	TBD
FS-44	44" Square Fire Feature	<b>\$1,076</b>	TBD
FS-54	54" Square Fire Feature	<b>\$1,300</b>	TBD
FS-59	59" Square Fire Feature	<b>\$1,688</b>	TBD
FS-64	64" Square Fire Feature	<b>\$1,880</b>	TBD

### Mason-Lite Linear Fire Features (Unit Multiplier)

FSL-48	48" Linear Fire Feature	<b>\$1,470</b>	TBD
FSL-60	60" Linear Fire Feature	<b>\$1,535</b>	TBD



# Architectural Clay Tops by MFI

## Architectural Clay Pots for Mason-Lite Firebox (Accessory Multiplier)

Come Standard in Terra Cotta color also available in Salt, Black, Brown, Gray, Buff Clay for additional \$150

Pot Tops available for additional charge (Available in Stainless Steel and Copper) Additional \$50 for color top

See Brochure for sizing, Rain guard available upon request.		RETAIL Price/Ea	Weight
1410	St Augustine	\$1,221	110 lbs
1429	Lexington	\$1,559	153 lbs
1433	Plymouth 21	\$1,260	92 lbs
1434	Plymouth 31	\$1,573	130 lbs
1427	Monticello	\$978	68 lbs
1432	Chesapeake 21	\$1,066	115 lbs
1430	Chesapeake 31	\$1,467	157 lbs
1438	Bristol	\$1,103	102 lbs
1472	Princeton 33	\$1,642	147 lbs
1472E	Burlington 33	\$1,817	163 lbs
1477	Burlington 45	\$2,994	288 lbs
1477T	Burlington 60	\$3,309	334 lbs
1481	Hampton 21 - Brushed	\$961	95 lbs
1489	Hampton 21 - Smooth Finish	\$961	95 lbs
1480	Hampton 31 - Brushed	\$1,152	142 lbs
1490	Hampton 31 - Smooth Finish	\$1,152	142 lbs
1478	Hampton XL26 - Brushed	\$1,659	223 lbs
1478PL	Hampton XL26 - Smooth Finish	\$1,659	223 lbs



## Mason-Lite Premium Chimney Shrouds

Mason Lite's Decorative steel and copper chimney pots offer an alternative to unsightly factory flue caps and terminations. Available in 4 designs and in 4 colors of painted Kynar steel or in solid 16 oz. Copper, Mason Lite offers a chimney pot for any exterior. SHROUD ORDERS REQUIRED 50% DEPOSIT, CANCELED ORDERS MAY BE SUBJECT TO 20% FEE

### Mason-Lite Chimney Shrouds - Dover (20" x 20" I.D. & 36" height) (Accessory Multiplier)

SHDP6- NC	Dover Chimney Shroud - Natural Copper	<b>\$2,357</b>	200 lbs
SHDP6-MB	Dover Chimney Shroud - Matte Black	<b>\$1,500</b>	200 lbs
SHDP6-DB	Dover Chimney Shroud - Dark Bronze	<b>\$1,500</b>	200 lbs
SHDP6-SG	Dover Chimney Shroud - Storm Grey	<b>\$1,500</b>	200 lbs

Freight: \$225 for first, \$75 for each additional (Commercial Address, Continental US)(ADD \$100 FOR RESIDENTIAL)



### Mason-Lite Chimney Shrouds - Sussex (20" I.D. & 40" height) (Accessory Multiplier)

SHDP8-NC	Sussex Chimney Shroud - Natural Copper	<b>\$2,357</b>	200 lbs
SHDP8-MB	Sussex Chimney Shroud - Matte Black	<b>\$1,500</b>	200 lbs
SHDP8-DB	Sussex Chimney Shroud - Dark Bronze	<b>\$1,500</b>	200 lbs
SHDP8-SG	Sussex Chimney Shroud - Storm Grey	<b>\$1,500</b>	200 lbs

Freight: \$225 for first, \$75 for each additional (Commercial Address, Continental US)(ADD \$100 FOR RESIDENTIAL)



### Mason-Lite Chimney Shrouds - Arlington (20" x 20" I.D. & 32" height) (Accessory Multiplier)

SHDP9-NC	Arlington Chimney Shroud - Natural Copper	<b>\$2,357</b>	200 lbs
SHDP9-MB	Arlington Chimney Shroud - Matte Black	<b>\$1,500</b>	200 lbs
SHDP9-DB	Arlington Chimney Shroud - Dark Bronze	<b>\$1,500</b>	200 lbs
SHDP9-SG	Arlington Chimney Shroud - Storm Grey	<b>\$1,500</b>	200 lbs

Freight: \$225 for first, \$75 for each additional (Commercial Address, Continental US)(ADD \$100 FOR RESIDENTIAL)



### Mason-Lite Chimney Shrouds - Charleston (20" I.D. & 40" height) (Accessory Multiplier)

SHDP10-NC	Charleston Style Chimney Shroud - Natural Copper	<b>\$2,357</b>	200 lbs
SHDP10-MB	Charleston Style Chimney Shroud - Matte Black	<b>\$1,500</b>	200 lbs
SHDP10-DB	Charleston Style Chimney Shroud - Dark Bronze	<b>\$1,500</b>	200 lbs
SHDP10-SC	Charleston Style Chimney Shroud - Storm Grey	<b>\$1,500</b>	200 lbs

Freight: \$225 for first, \$75 for each additional (Commercial Address, Continental US)(ADD \$100 FOR RESIDENTIAL)



### Mason-Lite Chimney Shrouds - Accessories (Accessory Multiplier)

Needs to be Ordered with Shroud and Shipped Assembled to Shroud

SHDPA12	12" Adapter	<b>\$158</b>	20 lbs
SHDPA14	14" Adapter	<b>\$158</b>	20 lbs
SHDPA16	16" Adapter	<b>\$158</b>	20 lbs



## Class A Air-Cooled Chimney System for Masonry Fireplaces

12" Pipe & Acc. -For use w/ MFP44, MFP39, MFP33, & Custom Units (DuraVent Multiplier)

			RETAIL	
			Price/Ea	Weight
12DCA-12	12" Chimney Pipe		\$181.90	10 lbs
12DCA-18	18" Chimney Pipe		\$216.39	10 lbs
12DCA-36	36" Chimney Pipe		\$332.43	21 lbs
12DCA-48	48" Chimney Pipe		\$388.88	24 lbs
12DCA-AP	Anchor Plate		\$535.33	12 lbs
12DCA-APD	Anchor Plate w/ Damper		\$906.34	27 lbs
12DCA-CTF	Chase Top Flashing		\$446.11	4 lbs
12DCA-E15	15 Deg. Elbow		\$363.79	9 lbs
12DCA-E30	30 Deg. Elbow		\$363.79	9 lbs
12DCA-ES	Elbow Strap		\$195.39	5 lbs
12DCA-FS	Firestop		\$100.36	4 lbs
12DCA-IS	Attic Insulation Shield		\$746.39	5 lbs
12DCA-RRS	Roof Radiation Shield		\$171.59	10 lbs
12DCA-SC	Storm Collar		\$64.29	5 lbs
12DCA-SS	Supplementary Support		\$343.16	5 lbs
12DCA-ST	Stabilizer		\$116.67	5 lbs
12DCA-VC1	Chimney Cap		\$533.14	18 lbs
12DCA-WS	Wall Strap		\$203.85	5 lbs

14" Pipe & Acc. -For use w/ MFP49, MFP39-14, MFP44-14, & Custom Units (DuraVent Multiplier)

14DCA-12	12" Chimney Pipe		\$200.71	9 lbs
14DCA-18	18" Chimney Pipe		\$235.21	12 lbs
14DCA-36	36" Chimney Pipe		\$388.88	24 lbs
14DCA-48	48" Chimney Pipe		\$417.10	24 lbs
14DCA-AP	Anchor Plate		\$422.13	15 lbs
14DCA-APD	Anchor Plate w/ Damper		\$987.87	19 lbs
14DCA-CTF	Chase Top Flashing		\$316.75	15 lbs
14DCA-E15	15 Deg. Elbow		\$398.30	19 lbs
14DCA-E30	30 Deg. Elbow		\$398.29	19 lbs
14DCA-ES	Elbow Strap		\$200.21	5 lbs
14DCA-FS	Firestop		\$109.76	1 lbs
14DCA-IS	Attic Insulation Shield		\$777.75	12 lbs
14DCA-RRS	Roof Radiation Shield		\$108.55	4 lbs
14DCA-SC	Storm Collar		\$69.00	3 lbs
14DCA-SS	Supplementary Support		\$206.98	6 lbs
14DCA-ST	Stabilizer		\$96.09	3 lbs
14DCA-VC1	Chimney Cap		\$624.09	23 lbs
14DCA-WS	Wall Strap		\$210.12	7 lbs

## Class A Air-Cooled Chimney System for Masonry Fireplaces

16" Pipe & Acc.-For use w/ MFP63, MFPST43 & Custom Units (DuraVent Multiplier)

16DCA-12	12" Chimney Pipe	\$225.80	12 lbs
16DCA-18	18" Chimney Pipe	\$279.11	13 lbs
16DCA-36	36" Chimney Pipe	\$435.92	28 lbs
16DCA-48	48" Chimney Pipe	\$453.17	31 lbs
16DCA-AP	Anchor Plate	\$617.70	17 lbs
16DCA-APD	Anchor Plate w/ Damper	\$1,050.60	26 lbs
16DCA-CTF	Chase Top Flashing	\$754.95	15 lbs
16DCA-E15	15 Deg. Elbow	\$617.70	23 lbs
16DCA-E30	30 Deg. Elbow	\$435.92	23 lbs
16DCA-ES	Elbow Strap	\$205.03	5 lbs
16DCA-FS	Firestop	\$114.48	5 lbs
16DCA-IS	Attic Insulation Shield	\$784.03	12 lbs
16DCA-RRS	Roof Radiation Shield	\$514.74	4 lbs
16DCA-SC	Storm Collar	\$69.00	3 lbs
16DCA-SS	Supplementary Support	\$356.89	6 lbs
16DCA-ST	Stabilizer	\$192.17	5 lbs
16DCA-VC1	Chimney Cap	\$715.03	24 lbs
16DCA-WS	Wall Strap	\$312.87	7 lbs

## B-Vent Chimney System

		RETAIL	
10" Round Gas Vent (DuraVent Multiplier)		Price/Ea	Weight
10BV12-1	12" Length Round Rigid Pipe	\$221.72	4 lbs
10BV18-1	18" Length Round Rigid Pipe	\$240.88	7 lbs
10BV24-1	24" Length Round Rigid Pipe	\$305.03	8 lbs
10BV36-1	36" Length Round Rigid Pipe	\$340.95	12 lbs
10BV18A-1	18" Length Adjustable Pipe	\$364.18	6 lbs
10BVL45-1	45° Adj. Elbow (individually)	\$330.34	6 lbs
10BVFSP	Firestop Support Plate	\$178.92	5 lbs
10BVSC	Storm Collar	\$36.37	1 lbs
10BVVT-1	High-Wind Cap	\$387.20	7 lbs
MFP-10DH	10" Anch. Plate/Draft Hood	\$658.00	6 lbs

12" Round Gas Vent (DuraVent Multiplier)

12BV12-1	12" Length Round Rigid Pipe	\$277.44	5 lbs
12BV18-1	18" Length Round Rigid Pipe	\$313.92	8 lbs
12BV24-1	24" Length Round Rigid Pipe	\$277.44	10 lbs
12BV36-1	36" Length Round Rigid Pipe	\$476.08	12 lbs
12BV18A-1	18" Length Adjustable Pipe	\$370.04	8 lbs
12BVL45-1	45° Adj. Elbow (individually)	\$385.29	6 lbs
12BVFSP	Firestop Support Plate	\$247.52	7 lbs
12BVSC	Storm Collar	\$41.60	1 lbs
12BVVT-1	High-Wind Cap	\$545.31	8 lbs
MFP-12DH	12" Anch. Plate/Draft Hood	\$676.00	8 lbs



## Enervex Fans & Accessories

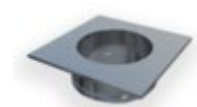
		RETAIL	
Chimney Fans (Accessory Multiplier)		Price/Ea	Weight
EXH0022	RS 012 Fan & FSC5 Ctrl	\$5,053	37 lbs
EXH0023	RS 014 Fan & FSC5 Ctrl	\$5,432	47 lbs
EXH0024	RS 016 Fan & FSC5 Ctrl	\$7,890	61 lbs
EXHT0022	HTRS 012 Fan & FSC5 Ctrl	\$5,925	34 lbs
EXHT0023	HTRS 014 Fan & FSC5 Ctrl	\$6,369	42 lbs
EXHT0024	HTRS 016 Fan & FSC5 Ctrl	\$9,249	47 lbs



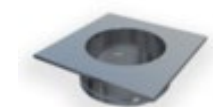
Chimney Fan Controls (Accessory Multiplier)			
EXH1126-5	FSC5, Fan Speed Control	\$121	3 lbs
EXH1126-15	FSC15, Fan Speed Control 15Amp Control	\$634	3 lbs
ADC100	Universal Control	\$1,464	3 lbs
ADC150	Modulating Control	\$3,079	3 lbs



Chimney Fan Adapters for Air Cooled Pipe (Accessory Multiplier)			
FR3010A	10" Steel Chimney Adapter for RS 012 and RS 014 for Air Cooled Pipe	\$837	N/A
FR3012A	12" Steel Chimney Adapter for RS 012 and RS 014 for Air Cooled Pipe	\$837	N/A
FR3014A	14" Steel Chimney Adapter for RS 012 and RS 014 for Air Cooled Pipe	\$837	N/A
FR3016A	16" Steel Chimney Adapter for RS 012 and RS 014 for Air Cooled Pipe	\$837	N/A
FR4010A	10" Steel Chimney Adapter for RS 016 for Air Cooled Pipe	\$837	N/A
FR4012A	12" Steel Chimney Adapter for RS 016 for Air Cooled Pipe	\$837	N/A
FR4014A	14" Steel Chimney Adapter for RS 016 for Air Cooled Pipe	\$837	N/A
FR4016A	16" Steel Chimney Adapter for RS 016 for Air Cooled Pipe	\$837	N/A



Chimney Fan Adapters for Insulated Pipe & B-Vent (Accessory Multiplier)			
FR3010	10" Steel Chimney Adapter for RS 012 and RS 014 for Insulated Pipe	\$778	N/A
FR3012	12" Steel Chimney Adapter for RS 012 and RS 014 for Insulated Pipe	\$778	N/A
FR3014	14" Steel Chimney Adapter for RS 012 and RS 014 for Insulated Pipe	\$778	N/A
FR3016	16" Steel Chimney Adapter for RS 012 and RS 014 for Insulated Pipe	\$778	N/A
FR4010	10" Steel Chimney Adapter for RS 016 for Insulated Pipe	\$778	N/A
FR4012	12" Steel Chimney Adapter for RS 016 for Insulated Pipe	\$778	N/A
FR4014	14" Steel Chimney Adapter for RS 016 for Insulated Pipe	\$778	N/A
FR4016	16" Steel Chimney Adapter for RS 016 for Insulated Pipe	\$778	N/A



Mechanical Fireplace Damper (Used with ADC100 or ADC150)(Gas Burning Only) (Accessory Multiplier)			
EXH2810-24	10" MFD for RS 09 and RS 012 24V	\$3,470	N/A
EXH2810-120	10" MFD for RS 09 and RS 012 120V	\$3,470	N/A
EXH2812-24	12" MFD for RS 09 and RS 012 24V	\$3,704	N/A
EXH2812-120	12" MFD for RS 09 and RS 012 120V	\$3,704	N/A
EXH2910-24	10" MFD for RS 014 and RS 016 24V	\$3,704	N/A
EXH2910-120	10" MFD for RS 014 and RS 016 120V	\$3,704	N/A
EXH2912-24	12" MFD for RS 014 and RS 016 24V	\$3,960	N/A
EXH2912-120	12" MFD for RS 014 and RS 016 120V	\$3,960	N/A
EXH2914-24	14" MFD for RS 014 and RS 016 24V	\$4,091	N/A
EXH2914-120	14" MFD for RS 014 and RS 016 120V	\$4,091	N/A
EXH2916-24	16" MFD for RS 014 and RS 016 24V	\$4,509	N/A
EXH2916-120	16" MFD for RS 014 and RS 016 120V	\$4,509	N/A



Slip Ring For MFD Using Air Cooled Pipe (Accessory Multiplier)			
ENE2930	10" Slip Ring For Air Cooled Chimney using Mech. Fireplace Dampers	\$435	N/A
ENE2932	12" Slip Ring For Air Cooled Chimney using Mech. Fireplace Dampers	\$435	N/A
ENE2934	14" Slip Ring For Air Cooled Chimney using Mech. Fireplace Dampers	\$435	N/A
ENE2936	16" Slip Ring For Air Cooled Chimney using Mech. Fireplace Dampers	\$435	N/A

## Replacement Parts

<b>Individual Parts for MFP63</b>		
MFP63-1	HEARTH - LEFT OR RIGHT - 1PIECE	\$ 583.13
MFP63-1A	HEARTH - CENTER	\$ 488.12
MFP63-2	REAR WALL - (2 PIECES)	\$806.99
MFP63-3	SIDE WALL	\$207.48
MFP63-3A	SIDE WALL W/4" KNOCKOUT	\$240.24
MFP63-4	DOWNDRAFT DIVERTER (2 PIECES)	\$782.96
MFP63-5	DOME REAR - LOWER	\$ 418.24
MFP63-6	LINTEL( 6A- \$509.53, 6B- \$274.39)	\$823.37
MFP63-7	DOME SIDE - LOWER OR UPPER	\$ 158.34
MFP63-8	DOME SIDE - MIDDLE	\$232.96
MFP63-9	DOME TOP FOR 16" CLASS A CHIMNEY	\$770.95
MFP63-10	DOME - FRONT/REAR MIDDLE	\$748.02
MFP63-11	DOME - FRONT/REAR UPPER	\$645.37
<b>Individual Parts for MFP49</b>		
MFP49-1	HEARTH - LEFT OR RIGHT - 1PIECE	\$509.96
MFP49-2	REAR WALL	\$289.38
MFP49-3	SIDE WALL	\$207.48
MFP49-3A	SIDE WALL W/4" COMBUSTION AIR HOLE	\$232.60
MFP49-4	DOWNDRAFT DIVERTER	\$509.96
MFP49-5	DOMW REAR - LOWER	\$255.53
MFP49-6	LINTEL( 6A-\$365.03 , 6B- \$196.80 )	\$535.08
MFP49-7	DOME SIDE - LOWER	\$ 158.34
MFP49-8	DOME SIDE - UPPER	\$ 251.16
MFP49-9	DOME TOP FOR 14" CLASS A CHIMNEY	\$480.48
MFP49-10	DOME FRONT/REAR - UPPER	\$444.44
<b>Individual Parts for MFP44</b>		
MFP44-1	HEARTH - LEFT OR RIGHT - 1PIECE	\$454.27
MFP44-2	REAR WALL	\$262.08
MFP44-3	SIDE WALL	\$207.48
MFP44-3A	SIDE WALL W/4" COMBUSTION AIR HOLE	\$226.04
MFP44-4	DOWNDRAFT DIVERTER	\$466.28
MFP44-5	DOME REAR - LOWER	\$228.23
MFP44-6	LINTEL (6A- \$300.45, 6B- \$161.78)	\$484.85
MFP44-7	DOME SIDE - LOWER	\$ 153.97
MFP44-8	DOME SIDE - UPPER	\$236.96
MFP44-9	DOME TOP FOR 12" CLASS A CHIMNEY	\$432.43
MFP44-10	DOMR FRONT/REAR - UPPER	\$400.76
<b>Individual Parts for MFP39</b>		
MFP39-1	HEARTH - LEFT OR RIGHT - 1PIECE	\$ 432.43
MFP39-2	REAR WALL	\$ 236.96
MFP39-3	SIDE WALL	\$ 207.48
MFP39-3A	SIDE WALL W/4" COMBUSTION AIR HOLE	\$ 226.04
MFP39-4	DOWNDRAFT DIVERTER	\$ 432.43
MFP39-5	DOME REAR - LOWER	\$ 207.48
MFP39-6	LINTEL (6A-\$281.00 , 6B- \$151.31)	\$ 454.27
MFP39-7	DOME SIDE - LOWER	\$ 153.97
MFP39-8	DOME SIDE - UPPER	\$ 236.96
MFP39-9	DOME TOP FOR 12" CLASS A CHIMNEY	\$ 400.76
MFP39-10	DOME FRONT/REAR - UPPER	\$ 368.00
<b>Individual Parts for MFPST43</b>		
MFPST43-1	HEARTH - LEFT OR RIGHT - 1PIECE	\$ 494.68
MFPST43-3	SIDE WALL	\$ 282.83
MFPST43-3A	SIDE WALL W/4" COMBUSTION AIR HOLE	\$ 304.67
MFPST43-6	LINTEL(6A- \$250.24, 6B- \$134.75)	\$ 404.04
MFPST43-7	DOME SIDE - LOWER	\$ 153.97
MFPST43-8	DOME SIDE - UPPER	\$ 236.96
MFPST43-9	DOME TOP FOR 16" CLASS A CHIMNEY	\$ 466.28
MFPST43-10	DOME FRONT/REAR - UPPER	\$ 432.43
<b>Individual Parts for MFP33</b>		
MFP33-1	HEARTH - LEFT OR RIGHT - 1PIECE	\$ 404.04
MFP33-2	REAR WALL	\$ 215.12
MFP33-3	SIDE WALL	\$ 207.48
MFP33-3A	SIDE WALL W/4" COMBUSTION AIR HOLE	\$ 215.28
MFP33-4	DOWNDRAFT DIVERTER	\$ 190.01
MFP33-5	DOME REAR - LOWER	\$ 188.92
MFP33-6	LINTEL (6A- \$257.67, 6B- \$138.74)	\$ 416.05
MFP33-7	DOME SIDE - LOWER	\$ 153.97
MFP33-8	DOME SIDE - UPPER	\$ 236.96
MFP33-9	SOME TOP FOR 12" CLASS A CHIMNEY	\$ 372.37
MFP33-10	DOME FRONT/REAR - UPPER	\$ 352.72